

COMO
WALL-MOUNT



ASPIRE



Como combines arched glass wings and stainless steel to create a light and airy environment...the perfect centerpiece for any contemporary kitchen. This gently flowing design is powered by a 600 CFM blower that can handle the demands generated by today's cooktops. The high-tech multi-function LCD controls multiple functions, including halogen lighting with 2 light intensities and a sensor that tells you when to clean your dishwasher-safe, stainless steel microhole filter. Designed for standard ducted installation, Como can also be installed as a recirculating system using the Recirculating Kit, available as an accessory.



Halogen Lamps



Multi-Function Electronic
Touch Controls



Stainless Steel Micro Hole
Filter

MODELS

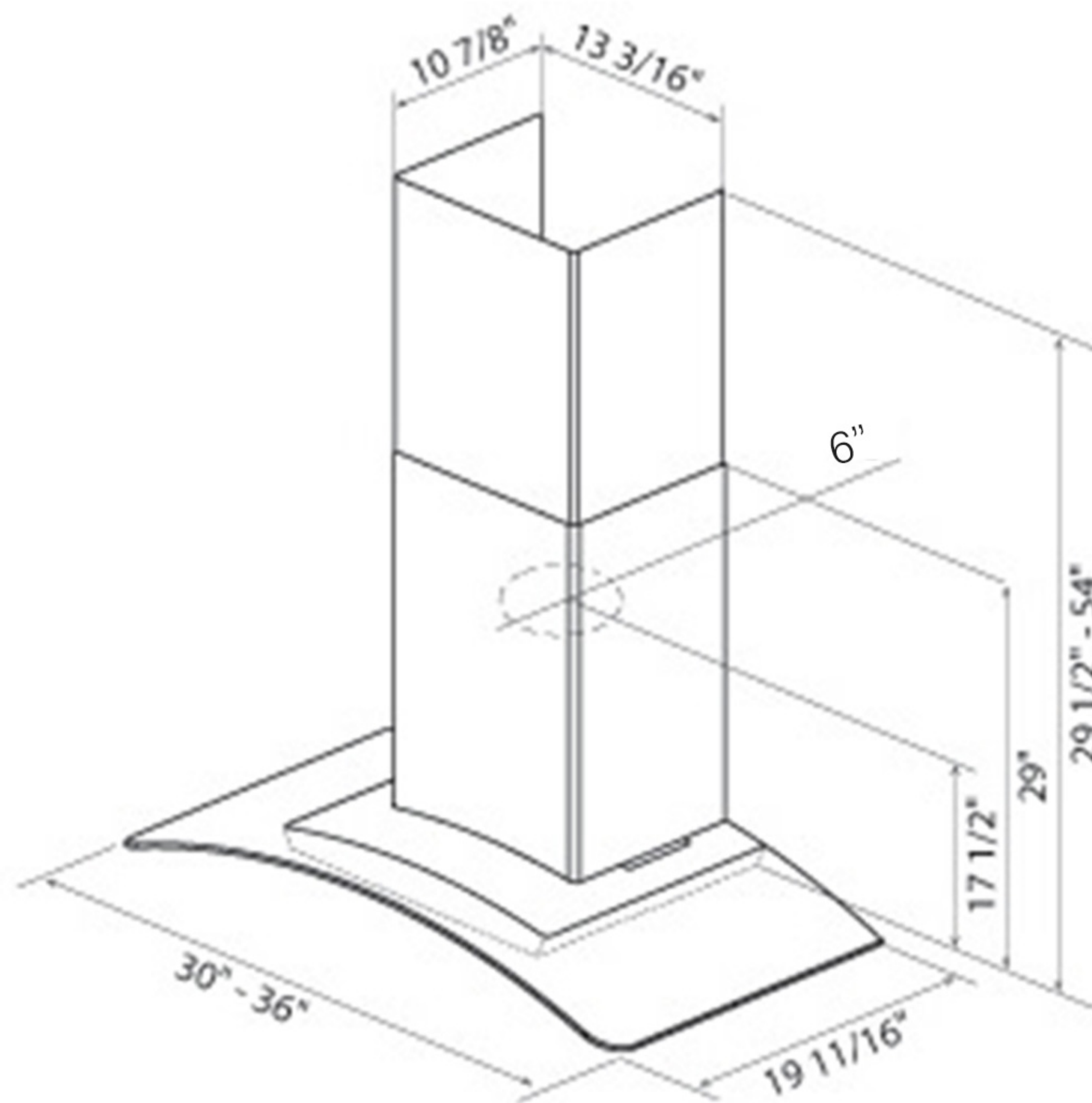
- ECM630S2 Como 30" Stainless
- ECM636S2 Como 36" Stainless

DIMENSIONS

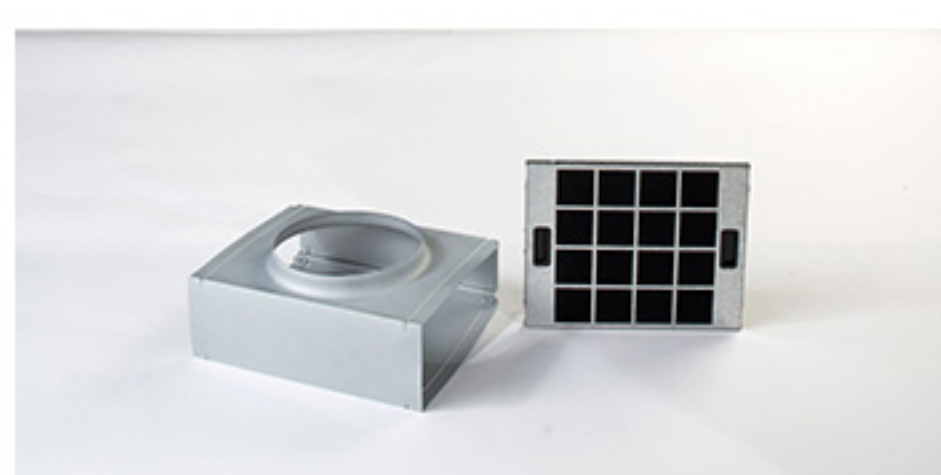
- (30"W x 19 11/16"D x 1 15/16"H)
- (36"W x 19 11/16"D x 1 15/16"H)

FEATURES

Size (in) & Type Finish	30" or 36" Wide, Wall-Mounted Chimney Hood Stainless Steel + Glass
Controls	Multi-Function Electronic Touch with LCD Display
Illumination	2, 40 Watt Halogen Lamps (Bulbs Included) 2 Light Intensities
Installation Type	Ducted or Recirculating Installation Recirculating Kit Sold Separately
Blower Type	600 CFM, 4-Speed Internal
Blower Performance	Speed 1, 160 CFM, 1.6 Sones Speed 2, 280 CFM, 3.5 Sones Speed 3, 470 CFM, 6.5 Sones Speed 4, 600 CFM, 8.7 Sones
Filter Type	1, Dishwasher-Safe, Stainless Steel Micro Hole
Telescopic Chimney Extension	For heights 7'5" to 10' (Ducted) For heights 7'5" to 10'3" (Recirculating)
Duct Transition	6" Round (Back Draft Damper Included)
Electrical	120V - 60 Hz 530 Watt at 4.4 Amps



ACCESSORIES



Optional
Recirculating Kit for
30" and 36" unit

CODE: KIT02199
MODEL: EXXRCK05



Optional
Long Chimney
Extension Kit for
9'0" - 12'0"

CODE: KIT02785
MODEL: EXXCEK07