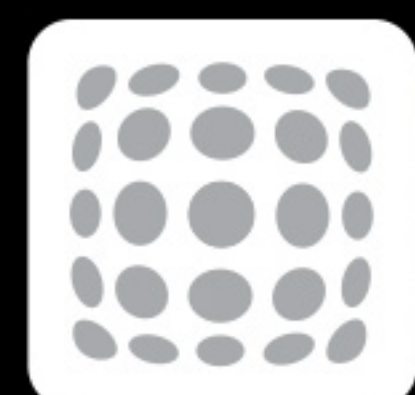


# OLA HANGING



Ambient light

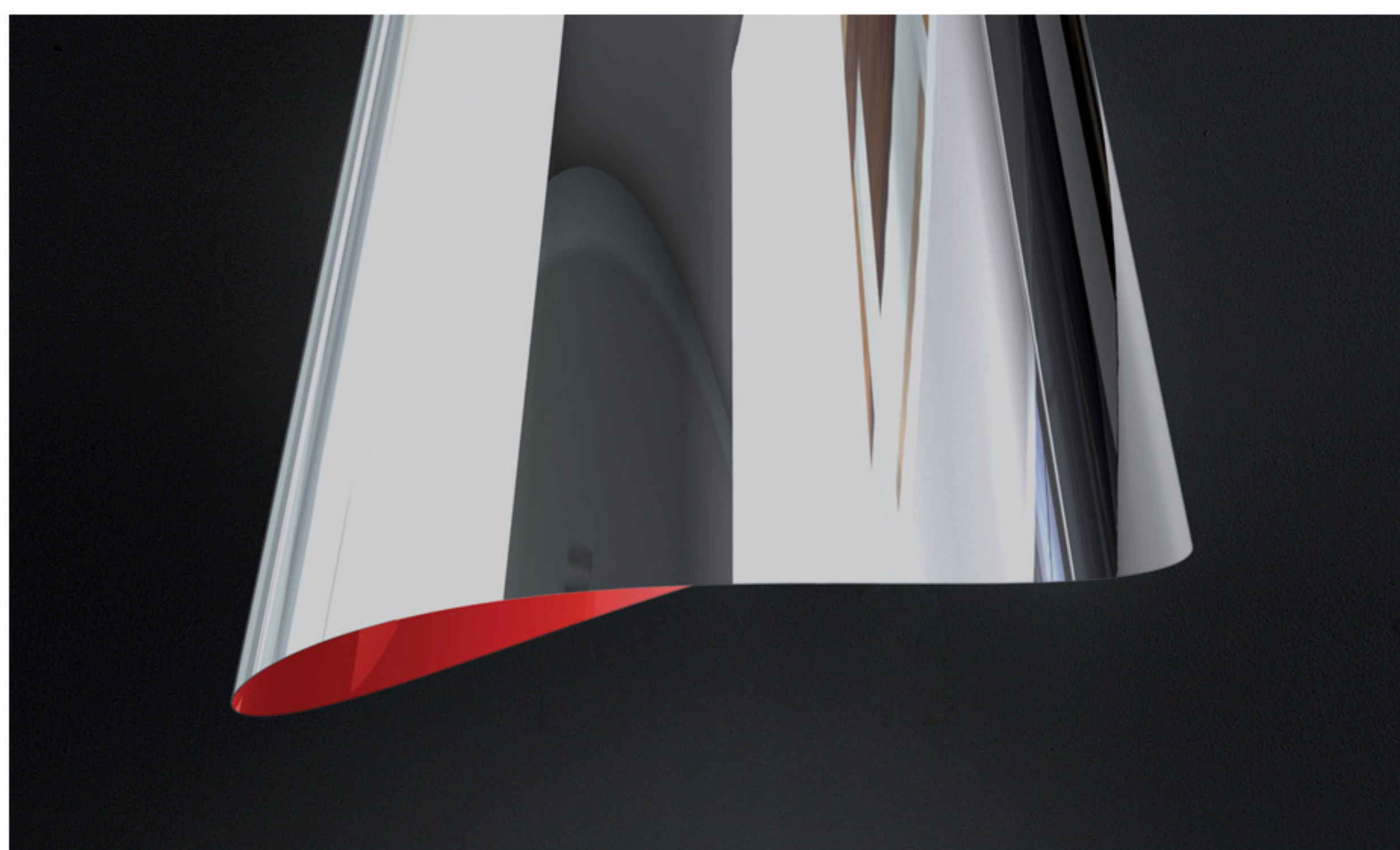


≥ 20"



≥ 28"

## COLLECTION



As in a mobius strip, the on-lookers gaze is transfixed by the mystery of the infinite, which has no beginning and no end. Thought is suspended, the eye deceived, as it seeks in vain for something familiar – color, material, function... and finds nothing, except wonder.

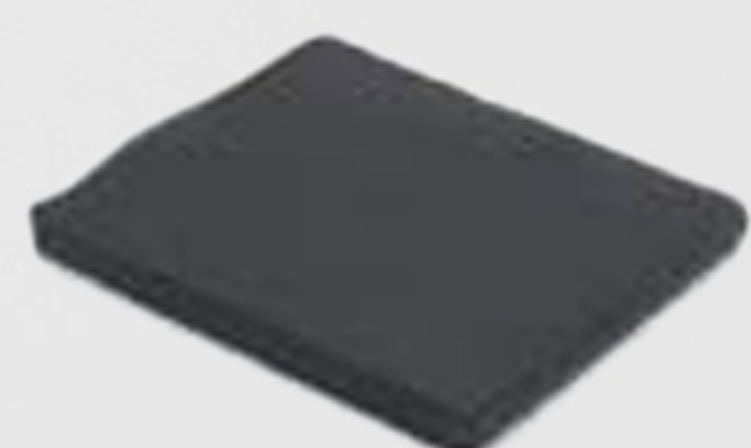
*(Wall installation with bracket possible)*



Halogen Lamps



Soft Touch, Push Buttons Controls



Aluminium Mesh Grease Filter & Long Life Carbon Filter

### MODELS

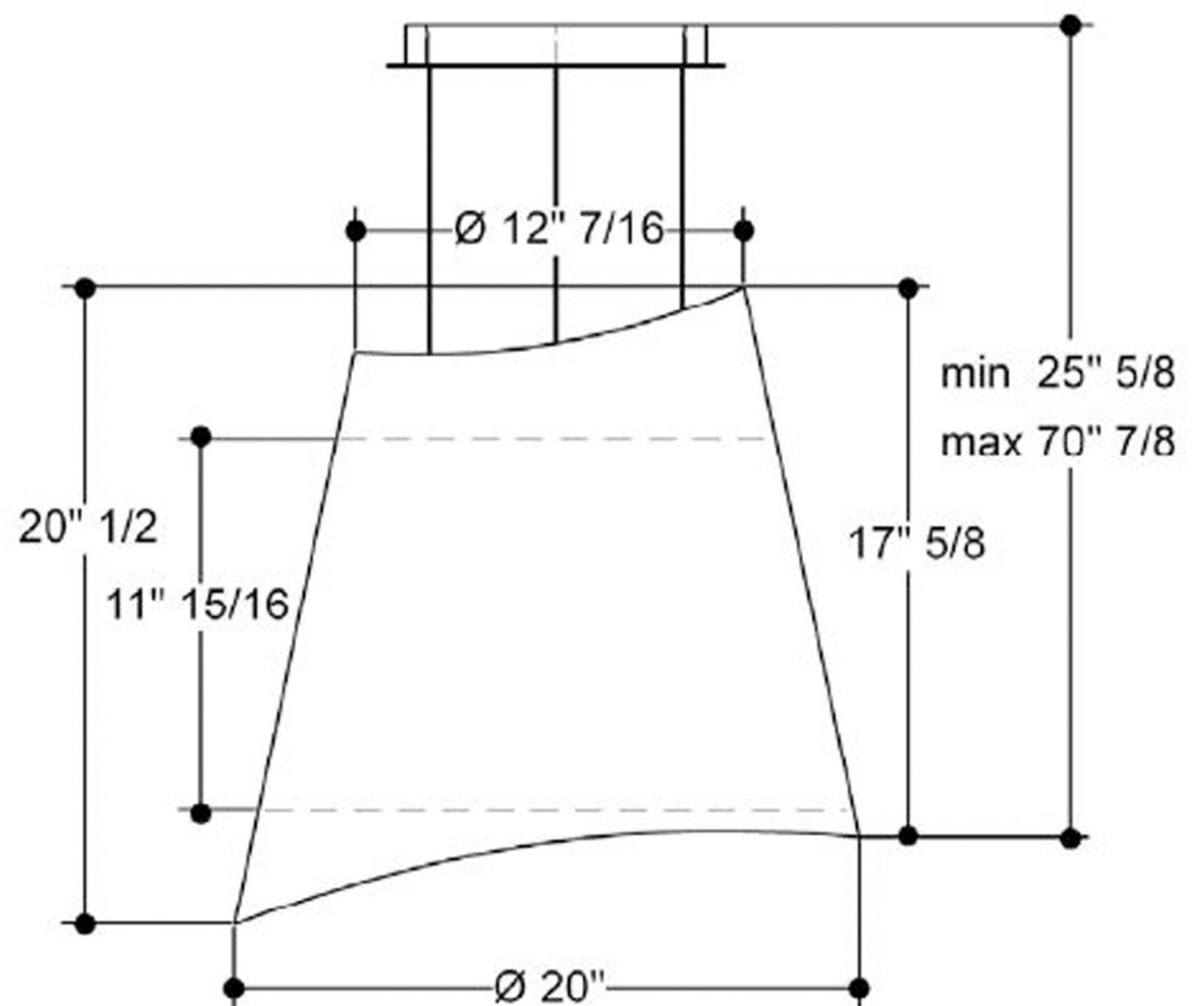
EOL320RD Ola Bright 20" Red

### DIMENSIONS

(20"W x 20 1/2"H x 20"D)

**FEATURES**

Size (in) & Type Finish	20" Wide, Island/ Wall Mounted Hood Stainless Steel & Colored
Controls	Soft Touch Illuminated
Illumination	2, 20 Watt Halogen Lamps (Bulbs Included) 1 Light Intensity
Installation Type	Recirculating Installation Only
Blower Type	350 CFM, 3-Speed Internal
Blower Performance	Speed 1, 110 CFM, 0.3 Sones Speed 2, 220 CFM, 2.1 Sones Speed 3, 350 CFM, 3.8 Sones
Filter Type	1, Dishwasher-Grease Aluminium Filter 1, Long Life Carbon Filter (Included)
Standard Ceiling Height	Range 7' 1" - 11' 8"
Electrical	120V - 60 Hz 200 Watt at 1.7 Amps



**ACCESSORIES**



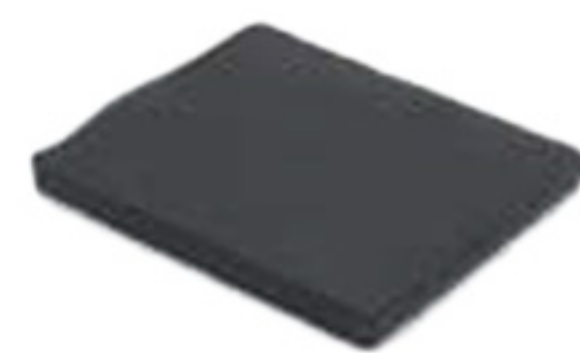
Optional  
Wall Mounting  
Bracket Kit

CODE: KIT02349  
MODEL: EXXWBK02



Optional  
Ceiling Heights  
Range 7' 1" - 23' 7"

CODE: KIT01921  
MODEL: EXXEEKSS



Optional  
Long Life Carbon  
Filter

CODE: RG006A  
MODEL: EXXRCKEC