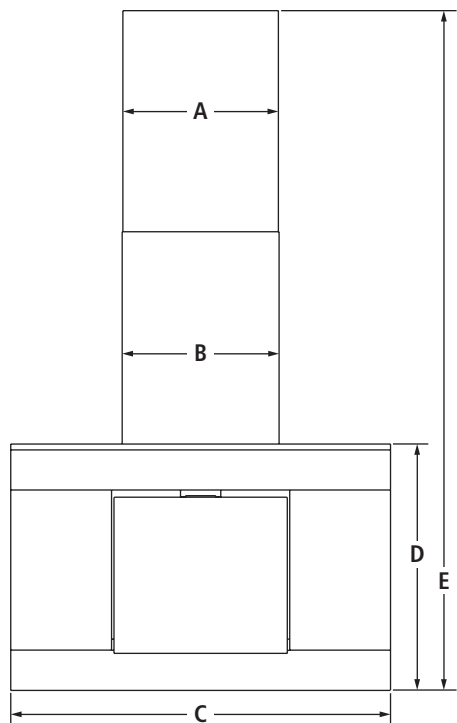


32" GLASS COLLECTION PERIMETRIC HOOD

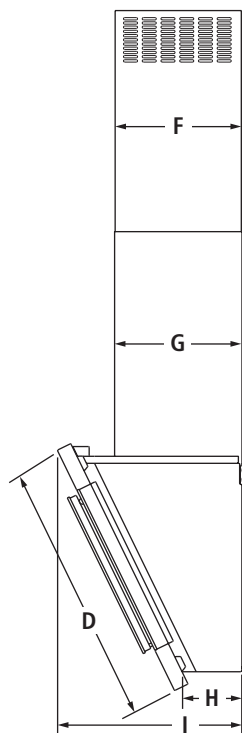
JXP5032WS – 32" x 43³/₄"-56³/₄" x 15¹/₄"

PRODUCT DIMENSIONS

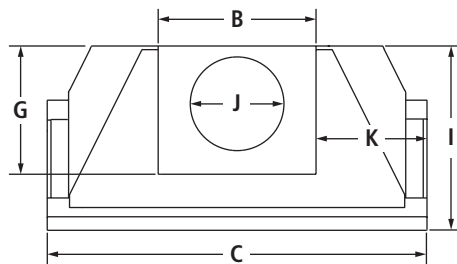


FRONT VIEW

MODEL #		JXP5032WS	
		in	cm
A	Width of chimney extension	13	33.0
B	Width of chimney	13 ¹ / ₄	33.5
C	Overall width	32	81.3
D	Height of glass canopy with trim	20 ³ / ₄	52.7
E	Overall height with vented installation (min.-max.)	43 ³ / ₄ -53	111.1-134.6
	Overall height with non-vented (recirculating) installation (min.-max.)	43 ³ / ₄ -56 ³ / ₄	111.1-144.1
F	Depth of chimney extension	10 ¹ / ₂	26.7
G	Depth of chimney	10 ⁵ / ₈	27.1
H	Depth of lamp housing	5	12.7
I	Overall depth	15 ¹ / ₄	38.7
J	Vent collar diameter	7 ⁷ / ₈	20.0
K	Width from chimney to edge of canopy	9 ³ / ₈	23.8



SIDE VIEW

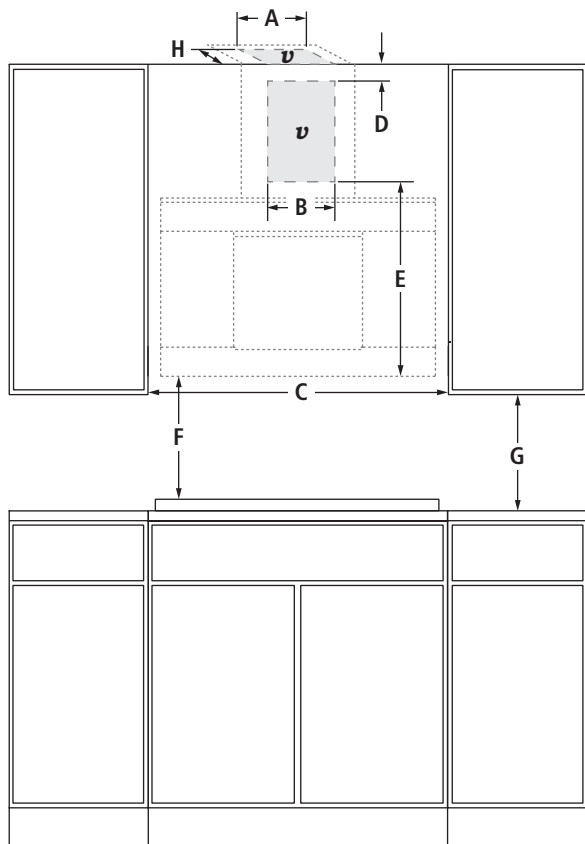


TOP VIEW

32" GLASS COLLECTION PERIMETRIC HOOD

JXP5032WS – 32" x 43³/₄"-56³/₄" x 15¹/₄"

OPENING/CLEARANCE DIMENSIONS



FRONT VIEW

ELECTRICAL REQUIREMENTS

120 volt, 60 Hz, AC only, 15-amp fused, electrical circuit is required.

VENTING REQUIREMENTS

The hood is factory set for venting through the roof or wall. For non-vented (recirculating) installation, refer to recirculation kit instructions for further information.

LOCATION REQUIREMENTS

For vented installation, the chimney can be adjusted for ceilings between 7' 11" (2.4 m) and 9' 3" (2.8 m).

For non-vented (recirculating) installation, the chimney can be adjusted for ceilings between 7' 11" (2.4 m) and 9' 7" (2.9 m).

MODEL #	JXP5032WS	
	in	cm
A	Width of entry location for vent and power supply – ceiling option (min.-max.)	
B	Width of entry location for vent and power supply – wall option (min.-max.)	
C	Width of cabinet opening (min.)	
D	Minimum height from entry location to ceiling for vent and power supply – wall option (vented installation)	
	Minimum height from entry location to ceiling for vent and power supply – wall option (non-vented installation)	
E	Height from hood to entry location for vent and power supply – wall option (min.)	
F	Suggested distance from hood to electric cooking surface (min.-max.)	
	Suggested distance from hood to gas cooking surface (min.-max.)	
G	Height from upper cabinet to countertop (min.)	
H	Depth of entry location for vent and power supply – ceiling option	
v	Recommended vent and power supply entry location	

JENN-AIR® DETAILED PLANNING DIMENSIONS

VENTILATION SELECTION CHART – COOKTOPS

MODEL #	PRO-STYLE™ HOODS			EURO-STYLE ISLAND-MOUNT HOODS		EURO-STYLE WALL-MOUNT HOODS		GLASS COLLECTION ISLAND-MOUNT HOOD	GLASS COLLECTION WALL-MOUNT HOODS		PERIMETRIC HOOD	OILED BRONZE WALL-MOUNT HOODS		EURO-STYLE TELESCOPING DOWNDRAFT SYSTEMS		CUSTOM HOOD LINERS	OVER-THE-RANGE MICROWAVE OVENS
	JXW9048WP	JXW9036WP JXU9136WP	JXW9030WP JXU9130WP	JXI8042WS	JXI8036WS	JXW8036WS JXW8836WS	JXW8030WS	JXI5036WS	JXW5036WS	JXW5030WS	JXP5032WS	JXW6036WR	JXW6030WR	JXD7036YS	JXD7030YS	UXL6048YSSA UXL6036YSSA	JMV9186W JMV8208W
INDUCTION COOKTOPS																	
36-INCH																	
JIC4536X – 5 Elements	■	■	—	★	★	★	—	★	★	—	★	■	—	★	—	★	■
30-INCH																	
JIC4430X – 4 Elements	■	■	■	■	★	★	★	★	★	★	★	■	■	★	★	★	■
CONVENTIONAL GAS COOKTOPS																	
36-INCH (less than 60,000 BTU total)																	
JGC9536BD – 5 Burners	■	■	—	★	★	★	—	★	★	—	★	★	—	★	—	★	■
JGC1536AD – 5 Burners	■	■	—	★	★	★	—	★	★	—	★	■	—	★	—	★	■
JGC8536BD – 5 Burners	■	■	—	★	★	★	—	★	★	—	★	■	—	★	—	★	■
30-INCH (less than 60,000 BTU total)																	
JGC9430BD – 4 Burners	■	■	■	■	★	★	★	★	★	★	★	★	★	★	★	★	■
JGC1430AD – 4 Burners	■	■	■	■	★	★	★	★	★	★	★	■	■	★	★	★	■
JGC8430CD – 4 Burners	■	■	■	■	★	★	★	★	★	★	★	■	■	★	★	★	■
CONVENTIONAL ELECTRIC COOKTOPS																	
36-INCH																	
JEC4536Y – 5 Elements	■	■	—	★	★	★	—	★	★	—	★	■	—	★	—	★	■
JEC9536BD – 5 Elements	■	■	—	★	★	★	—	★	★	—	★	★	—	★	—	★	■
JEC8536BD – 5 Elements	■	■	—	★	★	★	—	★	★	—	★	■	—	★	—	★	■
30-INCH																	
JEC4530Y – 5 Elements	■	■	■	■	★	★	★	★	★	★	★	■	■	★	★	★	■
JEC9530BD – 5 Elements	■	■	■	■	★	★	★	★	★	★	★	★	★	★	★	★	■
JEC8430BD – 4 Elements	■	■	■	■	★	★	★	★	★	★	★	■	■	★	★	★	■

A. Custom hood liners can be used with any of the following blower motors: UXB1200DYS, UXB0600DYS, UXI1200DYS or UXI0600DYS.

KEY	
★	Style and Performance Pair
■	Performance Pair
—	Not Recommended

Product dimension, cutout and installation specifications are provided for planning purposes only. Before installing any product, be sure to verify cutout dimensions and electrical/gas connections as actual product dimensions may vary.



JENN-AIR® DETAILED PLANNING DIMENSIONS

VENTILATION SELECTION CHART – RANGETOPS AND RANGES

MODEL #	PRO-STYLE™ HOODS			EURO-STYLE ISLAND-MOUNT HOODS		EURO-STYLE WALL-MOUNT HOODS		GLASS COLLECTION ISLAND-MOUNT HOOD	GLASS COLLECTION WALL-MOUNT HOODS		PERIMETRIC HOOD	OILED BRONZE WALL-MOUNT HOODS		EURO-STYLE TELESCOPING DOWNDRAFT SYSTEMS	CUSTOM HOOD LINERS		OVER-THE-RANGE MICROWAVE OVENS	
	JXW9048WP	JXW9036WP JXU9136WP	JXW9030WP JXU9130WP	JXI8042WS	JXI8036WS	JXW8036WS JXW8836WS	JXW8030WS	JXI5036WS	JXW5036WS	JXW5030WS	JXP5032WS	JXW6036WR	JXW6030WR	JXD7036YS JXD7030YS	1200 or 600 CFMA	600 CFMB	JMV9186W JMV8208W	
PRO-STYLE® RANGETOPS																		
48-INCH (more than 60,000 BTU total)																		
JGCP548WP – 6 Burners & Griddle	★	—	—	—	—	—	—	—	—	—	—	—	—	—	★	—	—	
36-INCH (less than 60,000 BTU total)																		
JGCP536WP – 4 Burners & Griddle	★	★	—	■	■	■	—	■	■	—	■	■	—	—	★	★	—	
36-INCH (more than 60,000 BTU total)																		
JGCP436WP – 6 Burners	★	★	—	—	—	—	—	—	—	—	—	—	—	—	★	—	—	
30-INCH (less than 60,000 BTU total)																		
JGCP430WP – 4 Burners	■	★	★	■	■	■	■	■	■	■	■	■	■	—	★	★	—	
48-INCH (less than 60,000 BTU total)																		
JGD8348CDP – 4 Burners & Grill Assembly	—	—	—	—	—	—	—	—	—	—	—	—	—	—	★	—	—	
PRO-STYLE® DUAL-FUEL AND GAS RANGES																		
48-INCH (more than 60,000 BTU total)																		
JDRP548WP – 6 Burners & Griddle	★	—	—	—	—	—	—	—	—	—	—	—	—	—	★	—	—	
JGRP548WP – 6 Burners & Griddle	★	—	—	—	—	—	—	—	—	—	—	—	—	—	★	—	—	
36-INCH (less than 60,000 BTU total)																		
JDRP536WP – 4 Burners & Griddle	★	★	—	■	■	■	—	■	■	—	■	■	—	—	★	★	—	
JGRP536WP – 4 Burners & Griddle	★	★	—	■	■	■	—	■	■	—	■	■	—	—	★	★	—	
36-INCH (more than 60,000 BTU total)																		
JDRP436WP – 6 Burners	★	★	—	—	—	—	—	—	—	—	—	—	—	—	★	—	—	
JGRP436WP – 6 Burners	★	★	—	—	—	—	—	—	—	—	—	—	—	—	★	—	—	
30-INCH (less than 60,000 BTU total)																		
JDRP430WP – 4 Burners	—	★	★	—	■	■	■	■	■	■	■	■	■	—	★	★	—	
JGRP430WP – 4 Burners	—	★	★	—	■	■	■	■	■	■	■	■	■	—	★	★	—	
SLIDE-IN RANGES																		
Dual-Fuel and Gas Conventional (less than 60,000 BTU total)																		
JDS886BDP – 4 Burners	■	★	★	■	★	★	★	★	★	★	★	★	■	■	—	★	★	■
JDS8850CD – 4 Burners	■	■	■	■	★	★	★	★	★	★	★	★	■	■	—	★	★	■
JGS8860BDP – 4 Burners	■	★	★	■	★	★	★	★	★	★	★	★	■	■	—	★	★	■
JGS8850CD – 4 Burners	■	■	■	■	★	★	★	★	★	★	★	★	★	★	—	★	★	■
ELECTRIC CONVENTIONAL																		
JES8850CA – 5 Elements	■	■	■	■	★	★	★	★	★	★	★	★	■	■	—	★	★	■

A. Custom hood liners can be used with any of the following blower motors: UXB1200DYS, UXB0600DYS, UXI1200DYS or UXI0600DYS.
 B. Blower motor UXB0600DYS is rated for up to 65,000 BTUs and can be used with the rangetops and ranges indicated.

KEY	
★	Style and Performance Pair
■	Performance Pair
—	Not Recommended

