

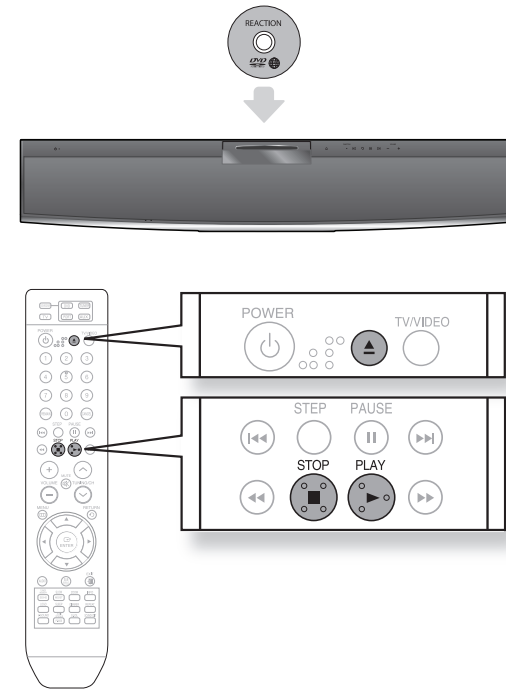
# quick start guide

- 1 disc playback
- 2 remote control functions
- 3 connecting the wireless subwoofer
- 4 connecting the video out to your tv
- 5 connecting audio from external components
- 6 listening to radio

## 2.1CH Digital Home Theater System HT-X810

### 1 disc playback

1. Press the **EJECT** (⏏) button to open the Disc Slot cover.
2. Load a disc vertically into the Disc Insert Hole.
  - Place a disc gently into the tray with the disc's label facing up.
3. Close the compartment by pressing the **PLAY** (▶) button.
  - Playback starts automatically.

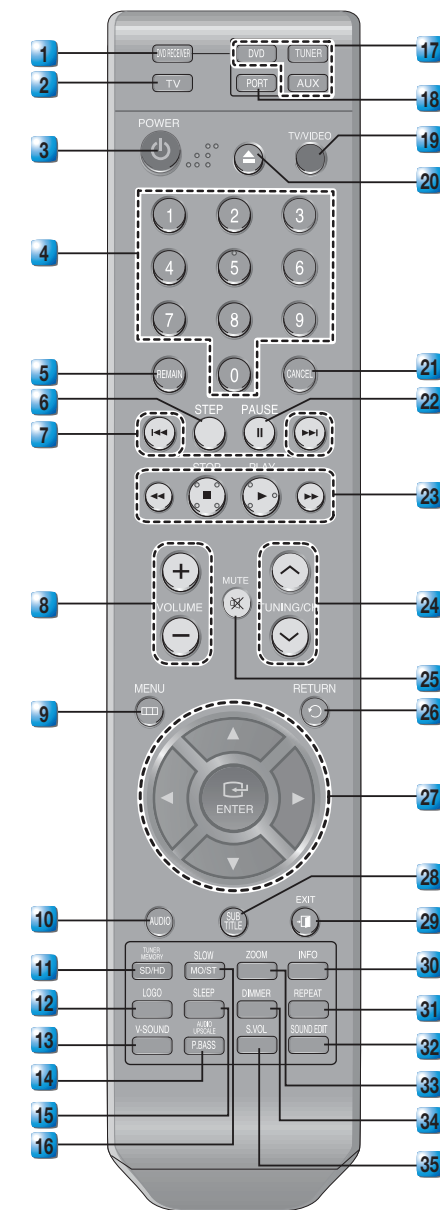


Thank you for purchasing this Samsung 2.1CH Digital Home Theater System. We have manufactured this product to provide you with many hours of Audio/Video Entertainment. This "QUICK START GUIDE" guide has been included to get you up and running in the least amount of time as possible.

If you have any questions or comments relating to Samsung products, please contact the SAMSUNG customer care center.

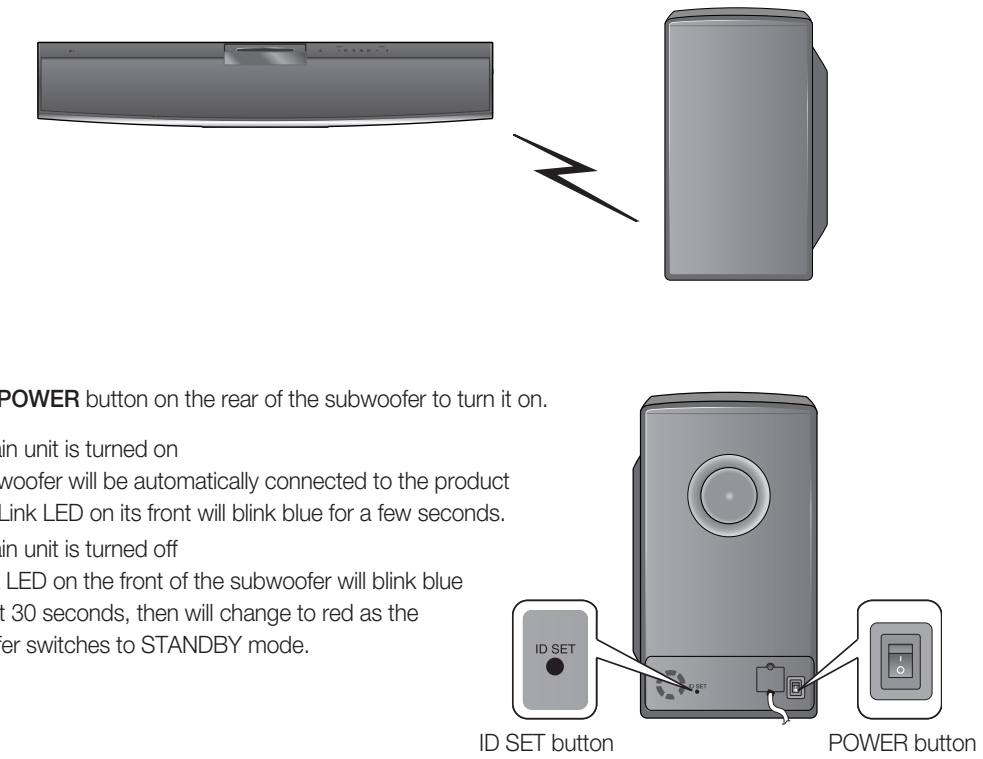
Samsung Electronics America, Inc.  
1-800-SAMSUNG (7267864)  
www.samsung.com/us

### 2 remote control functions



- |   |  |   |
|---|--|---|
| <p><b>1</b> DVD RECEIVER button<br/>You can operate your DVD receiver with the remote control.</p> <p><b>2</b> TV button<br/>You can operate your Samsung TV with the remote control.</p> <p><b>3</b> POWER button<br/>Press to turn the Home Theater or your Samsung TV On/Off.</p> <p><b>4</b> Number (0-9) buttons</p> <p><b>5</b> REMAIN button<br/>You can check the elapsed or remaining time on a disc.</p> <p><b>6</b> STEP button<br/>The picture moves forward one frame each time the button is pressed during playback.</p> <p><b>7</b> Tuning Preset/CD Skip buttons<br/>Tune in radio broadcasting, skip the song/scene.</p> <p><b>8</b> VOLUME button<br/>Press + to raise the volume and - to lower it.</p> <p><b>9</b> MENU button<br/>Press to see the menu.</p> <p><b>10</b> AUDIO button<br/>Selects the Disc's Audio language.</p> <p><b>11</b> TUNER MEMORY, SD/HD button<br/>Press to memorize radio frequencies. Press to select SD or HD(Standard or High Definition ) mode.</p> <p><b>12</b> LOGO button<br/>You can make your own TV wallpaper (screen saver).</p> <p><b>13</b> V-SOUND(Virtual Sound) button<br/>Makes virtual surround sound with just 2.1 channels.</p> <p><b>14</b> P.BASS/AUDIO UPSCALING button<br/>• Provides more powerful bass<br/>• Makes your MP3s sound better</p> <p><b>15</b> SLEEP button<br/>Press to set the sleep off time.</p> <p><b>16</b> SLOW button<br/>Selects three different slow motion playback speeds.</p> <p><b>MO/ST</b> button<br/>You can listen to radio broadcasts in MONO or STEREO.</p> <p><b>DVD</b> DVD button<br/>Press to select the DVD mode.</p> <p><b>TUNER</b> TUNER button<br/>Press to listen to radio broadcasting.</p> <p><b>AUX</b> AUX button<br/>Press to select external audio input.</p> | <p><b>17</b> DVD RECEIVER button<br/>You can operate your DVD receiver with the remote control.</p> <p><b>18</b> TV button<br/>You can operate your Samsung TV with the remote control.</p> <p><b>19</b> POWER button<br/>Press to turn the Home Theater or your Samsung TV On/Off.</p> <p><b>20</b> Number (0-9) buttons</p> <p><b>21</b> REMAIN button<br/>You can check the elapsed or remaining time on a disc.</p> <p><b>22</b> STEP button<br/>The picture moves forward one frame each time the button is pressed during playback.</p> <p><b>23</b> Tuning Preset/CD Skip buttons<br/>Tune in radio broadcasting, skip the song/scene.</p> <p><b>24</b> VOLUME button<br/>Press + to raise the volume and - to lower it.</p> <p><b>25</b> MENU button<br/>Press to see the menu.</p> <p><b>26</b> AUDIO button<br/>Selects the Disc's Audio language.</p> <p><b>27</b> TUNER MEMORY, SD/HD button<br/>Press to memorize radio frequencies. Press to select SD or HD(Standard or High Definition ) mode.</p> <p><b>28</b> LOGO button<br/>You can make your own TV wallpaper (screen saver).</p> <p><b>29</b> V-SOUND(Virtual Sound) button<br/>Makes virtual surround sound with just 2.1 channels.</p> <p><b>30</b> P.BASS/AUDIO UPSCALING button<br/>• Provides more powerful bass<br/>• Makes your MP3s sound better</p> <p><b>31</b> SLEEP button<br/>Press to set the sleep off time.</p> <p><b>32</b> SLOW button<br/>Selects three different slow motion playback speeds.</p> <p><b>33</b> MO/ST button<br/>You can listen to radio broadcasts in MONO or STEREO.</p> <p><b>34</b> DVD button<br/>Press to select the DVD mode.</p> <p><b>35</b> TUNER button<br/>Press to listen to radio broadcasting.</p> <p><b>36</b> AUX button<br/>Press to select external audio input.</p> | <p><b>18</b> PORT button<br/>USB port selection</p> <p><b>19</b> TV/VIDEO button<br/>Press TV/VIDEO button to select the Video input on your TV.</p> <p><b>20</b> EJECT button<br/>Press to move the cover so the Disc Slot is exposed.</p> <p><b>21</b> CANCEL button<br/>Used to cancel a wrong entry.</p> <p><b>22</b> PAUSE button<br/>Press to pause.</p> <p><b>▶</b> PLAY button<br/>Press to play.</p> <p><b>■</b> STOP button<br/>Press to stop.</p> <p><b>◀▶</b> SEARCH buttons<br/>Fast backward or forward through a song/scene.</p> <p><b>24</b> TUNING/CH button<br/>Press to select the channel or to tune in radio broadcasting.</p> <p><b>25</b> MUTE button<br/>Press to mute the sound.</p> <p><b>26</b> RETURN button<br/>Press to return to the previous menu.</p> <p><b>27</b> Cursor/ENTER button<br/>Used to select or move up/down, left/right when setting the menu function.</p> <p><b>28</b> SUBTITLE button<br/>Selects the disc subtitle language.</p> <p><b>29</b> EXIT button<br/>Press to exit the setup screen.</p> <p><b>30</b> INFO button<br/>View or change disc playback information on screen.</p> <p><b>31</b> REPEAT button<br/>Repeat playback of a chapter, title, group or track.</p> <p><b>32</b> SOUND EDIT button<br/>Adjust the speaker sound settings and level.</p> <p><b>33</b> ZOOM button<br/>Enlarges the picture during disc playback.</p> <p><b>34</b> DIMMER button<br/>The front display brightness will be adjusted.</p> <p><b>35</b> S.VOL(Smart Volume) button<br/>Makes the sound more stable during scene transitions.</p> |
|---|--|---|

### 3 connecting the wireless subwoofer



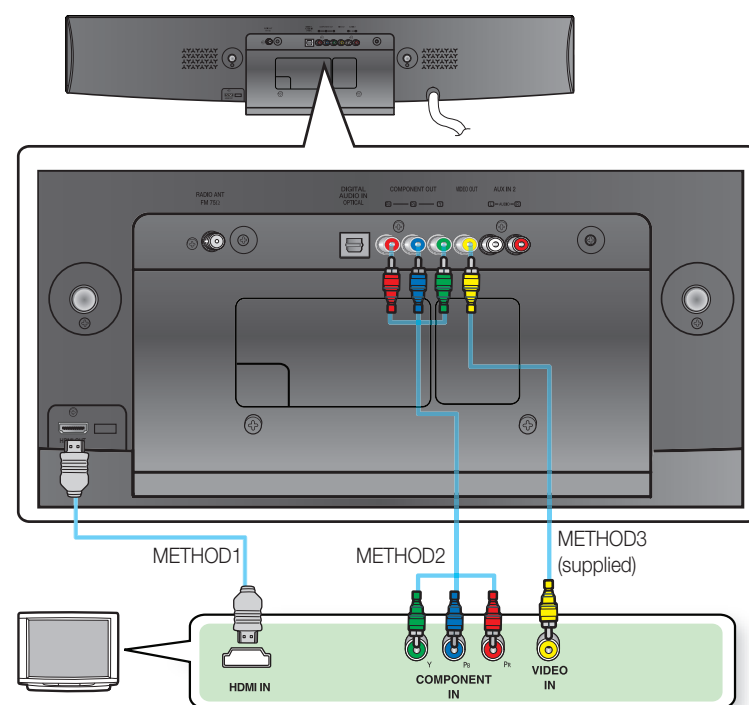
Press the **POWER** button on the rear of the subwoofer to turn it on.

- If the main unit is turned on  
The subwoofer will be automatically connected to the product and the Link LED on its front will blink blue for a few seconds.
  - If the main unit is turned off  
The Link LED on the front of the subwoofer will blink blue for about 30 seconds, then will change to red as the subwoofer switches to STANDBY mode.
- If the subwoofer is turned off, you will see **S/W CHECK** on the display panel of the main unit.
  - Place the wireless subwoofer under the main unit.
  - If you use a device such as a microwave oven, wireless LAN Card, Bluetooth equipment, or any other device that uses the same frequency (5.8GHz) near the system, some sound interruption may be heard due to interference.
  - The transmission distance of radio wave is about 32 feet, 9.7 inches, but may vary depending on your operating environment. If a steel-concrete wall or metallic wall is between the main unit and the wireless subwoofer, the system may not operate at all, because the radio wave cannot penetrate metal.
  - If the main unit doesn't make wireless connection, the system needs ID Setting between the main unit and wireless subwoofer. With the main unit turned off, press the remote control's "0"→"1"→"3"→"5" number buttons and the unit will turn on. With the wireless subwoofer turned on, press **ID SET** button on the back of the unit for 5 seconds.

- ! The wireless receiving antenna is built into the wireless subwoofer. Keep the unit away from water and moisture.
- For optimal listening performance, make sure that the area around the wireless subwoofer location is clear of any obstructions.

## 4 connecting the video out to your tv

Choose one of the three methods for connecting to a TV.



### METHOD 1 : HDMI (BEST QUALITY)



Connect the HDMI cable (not supplied) from the HDMI OUT jack on the back of the DVD Player to the HDMI IN jack on your TV.

### METHOD 2 : Component Video (BETTER QUALITY)

If your television is equipped with Component Video inputs, connect a Component video cable(not supplied) from the Component Video Output (Pr, Pb and Y) jacks on the back of the DVD Player to the Component Video Input jacks on your TV.

### METHOD 3 : Composite Video (GOOD QUALITY)

Connect the supplied Video cable from the VIDEO OUT jack on the back of the DVD Player to the VIDEO IN jack on your TV.

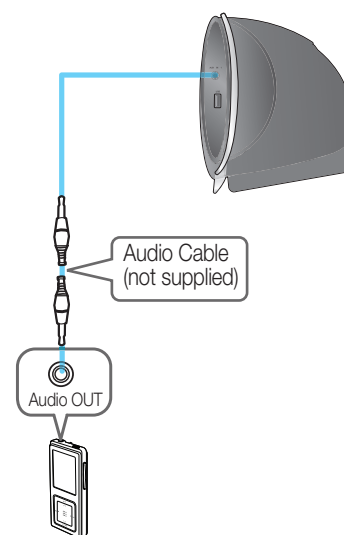
- This product operates in Interlace scan mode (480i) for component output.
- If you use an HDMI cable to connect a Samsung TV to the DVD Player, you can operate the Home Theater using the TV's remote control. This is only available with SAMSUNG TVs that support Anynet+(HDMI-CEC).
- Please check the  logo (If your TV has an  logo, then it supports the Anynet+ function.)

## 5 connecting audio from external components

### AUX1 : Connecting an External Component/MP3 player

Components such as an MP3 Player.

1. Connect AUX IN 1 (Audio) on the Home Theater to the Audio Out of the external component/MP3 player.
2. Press the **AUX** button on the remote control to select **AUX1** input.
  - You can also use the **FUNCTION** button on the main unit.The mode switches as follows :  
**DVD/CD → D.IN → AUX 1 → AUX 2 → USB → BT AUDIO → FM.**

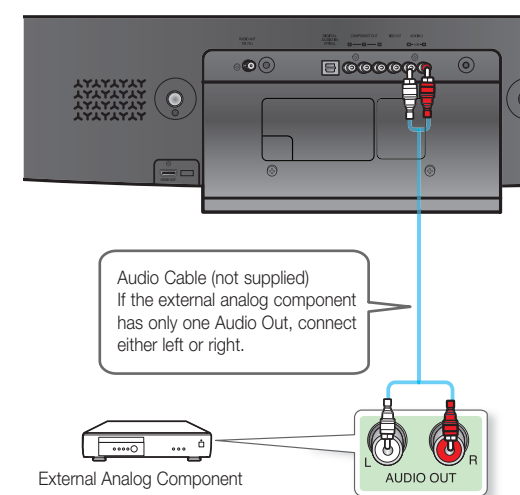


### AUX2 : Connecting an External Analog Component

Analog signal components such as a VCR.

1. Connect **AUX IN 2** (Audio) on the Home Theater to the Audio Out of the external analog component.
  - Be sure to match connector colors.
2. Press the **AUX** button on the remote control to select **AUX 2** input.
  - You can also use the **FUNCTION** button on the main unit.The mode switches as follows :  
**DVD/CD → D.IN → AUX 1 → AUX 2 → USB → BT AUDIO → FM.**

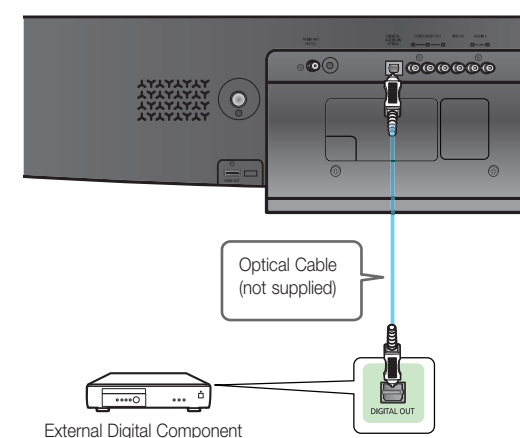
- You can connect the Video Output jack of your VCR to the TV, and connect the Audio Output jacks of the VCR to this product.



### OPTICAL : Connecting an External Digital Component

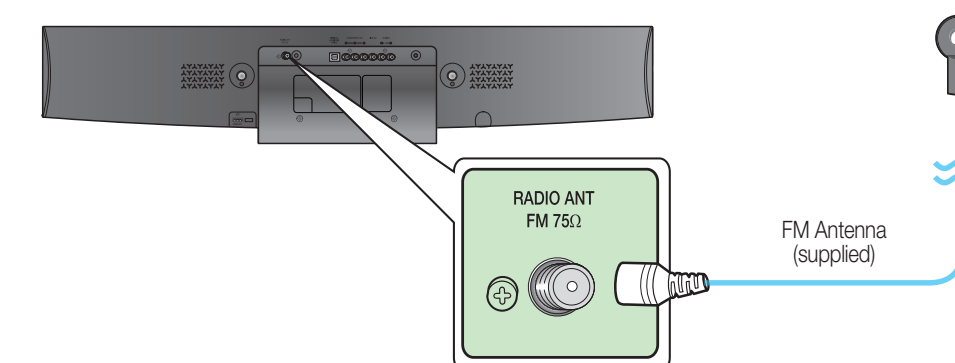
Digital signal components such as a Cable Box/Satellite receiver (Set-Top Box).

1. Connect the Digital Input (OPTICAL) on the Home Theater to the Digital Output of the external digital component.
2. Press the **AUX** button on the remote control to select DIGITAL IN.
  - You can also use the **FUNCTION** button on the main unit.The mode switches as follows :  
**DVD/CD → D.IN → AUX 1 → AUX 2 → USB → BT AUDIO → FM.**



## 6 listening to radio

### Connecting the FM Antenna



1. Connect the FM antenna supplied to the FM 75Ω COAXIAL Jack.
2. Slowly move the antenna wire around until you find a location where reception is good, then fasten it to a wall or other rigid surface.

### Listening to Radio

#### Remote Control

1. Press the **TUNER** button to select the FM band.
2. Tune in to the desired station.
  - **Automatic Tuning 1** : When the **◀▶** button is pressed, a preset broadcast station is selected.
  - **Automatic Tuning 2** : Press and hold the **▲▼** button to automatically search for active broadcasting stations.
  - **Manual Tuning** : Briefly press the **▲▼** button to increase or decrease the frequency incrementally.

#### Main Unit

1. Press the **FUNCTION** button to select the FM band.
2. Select a broadcast station.
  - **Automatic Tuning 1** : Press the **STOP** (■) button to select **PRESET** and then press the **◀▶** button to select the preset station.
  - **Automatic Tuning 2** : Press the **STOP** (■) button to select **MANUAL** and then press and hold the **◀▶** button to automatically search the band.
  - **Manual Tuning** : Press the **STOP** (■) button to select **MANUAL** and then briefly press the **◀▶** button to tune in to a lower or higher frequency.

Press the **MO/ST** button to listen in Mono/Stereo.

- Each time the button is pressed, the sound switches between **STEREO** and **MONO**.
- In a poor reception area, select **MONO** for a clear, interference-free broadcast.