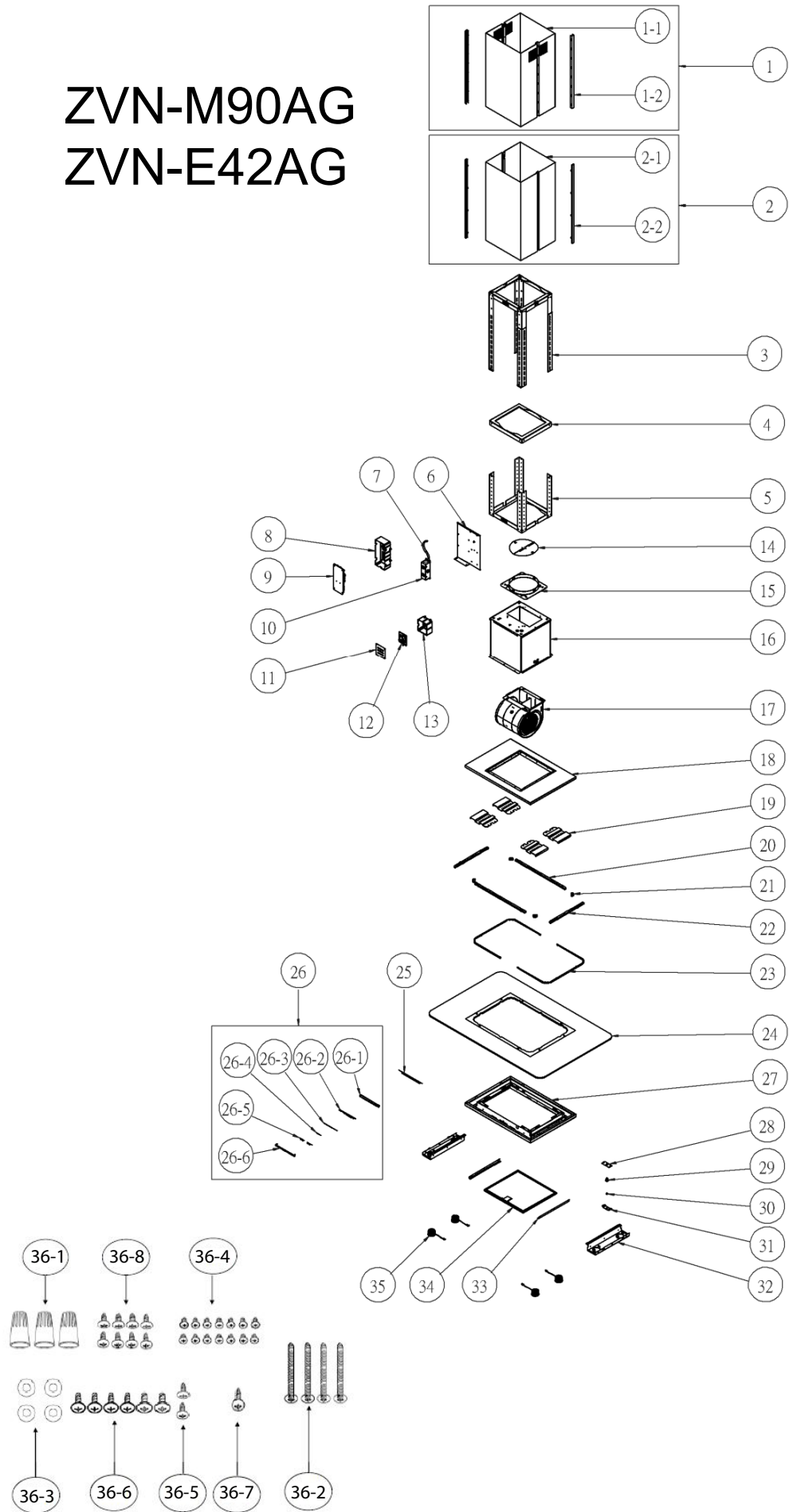


ZVN-M90AG

ZVN-E42AG



ZEPHYR

Verona Is.

ZVN-M90AG, ZVN-E42AG

Ref #	Part #	Description	Qty.
1	50050139	Duct Cover Assembly, Upper	1
1-1	50050140	Duct Cover, Upper	2
1-2	50170054	Duct Cover Trim, Upper	2
2	50050141	Duct Cover Assembly, Lower	1
2-1	50050142	Duct Cover, Lower	2
2-2	50170055	Duct Cover Trim, Lower	2
3	54110080	Support Frame, Upper	1
4	54110081	Support Frame, Square Support	1
5	54110082	Support Frame, Lower	1
6	54140159	Bracket, Electrical	1
7	11030070	Wiring, Electrical	1
8	54200019	Box, Component	1
9	11010043	Control Board	1
10	56200080	Box, Electrical	1
11	56210066	Cover, Box	1
12	11010049	Control Board, Lighted Glass	1
13	56200079	Box, Control Board	1
14	54060010	Damper, 8" Round	1
15	54050073	Collar, 8" Round	1
17	12120064	Blower	1
19	54140160	Bracket, Canopy	4
20	54140112	Bracket, LED Light	2
21	54140111	Bracket, LED Light	4
22	54140161	Bracket, LED Light	2
23	50500136	LED Light Assembly	1
24	50300109	Canopy (ZVN-M90AG)	1
24	50300110	Canopy (ZVN-E42AG)	1
25	54140096	Bracket, Switch	1
26	11000066	Switch Assembly	1
26-1	52170042	Housing, Switch	1
26-2	11010044	Switch Board	1

26-3	52110018	Membrane, Switch	1
26-4	52170043	Cover, LCD Screen	1
26-5	50400011	Button, Switch	2
26-6	56210055	Cover, Switch	1
27	50130116	Panel, Bottom	1
28	54190031	Plate, Lighted Glass Button	1
29	11040025	Botton, Lighted Glass	1
30	52170050	Cover, Lighted Glass Button	1
31	54140114	Bracket, Lighted Glass Button	1
32	50110125	Panel, Light	2
33	54140162	Bracket, Filter	2
34	50200049	Filter, Metal Mesh	1
35	Z0B-0032	Bloom LED Bulb, 3W	4
36	05000080	Hardware Packet	1
36-1	15000002	Wire Cap	3
36-2	01090002	Screw, M6 x 1 1/2	4
36-3	02170001	Washer	4
36-4	01070022	Screw, M4 x 8	20
36-5	01070006	Screw, M4 x 8	2
36-6	01020011	Screw, M4 x 7	6
36-7	01070021	Screw, M4 x 12	1
36-8	01060011	Screw, M3 x 6	14

OCT13.0101