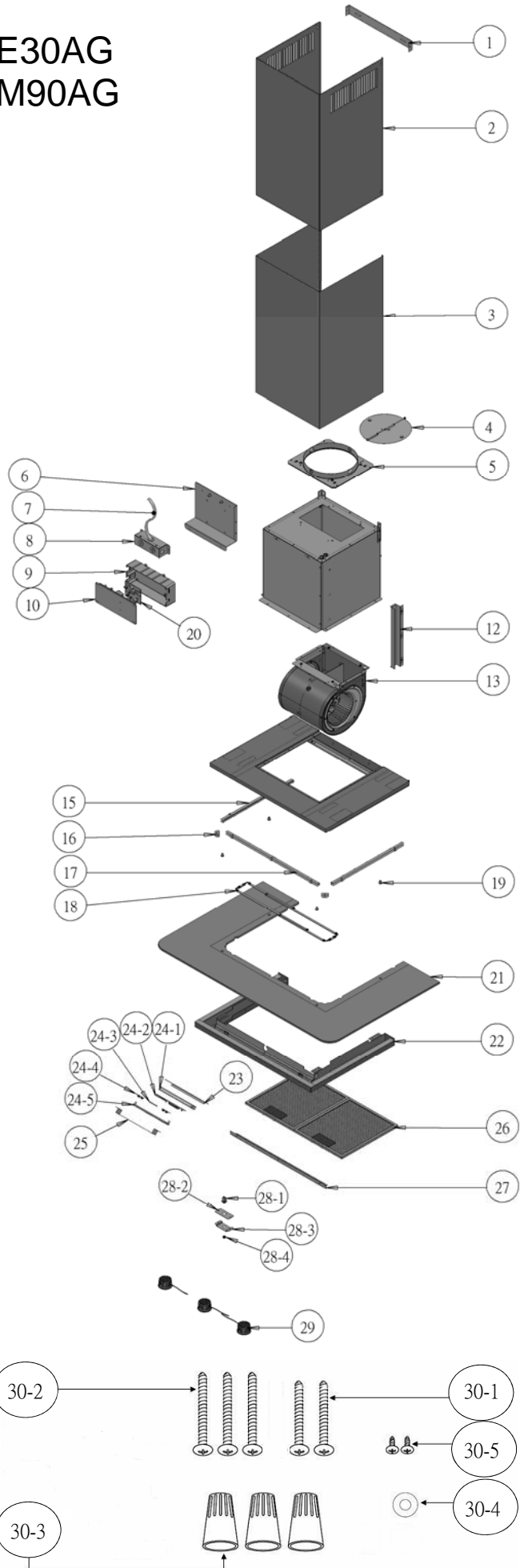


ZVO-E30AG
ZVO-M90AG



ZEPHYR

Verona

ZVO-E30AG, ZVO-M90AG

Ref #	Part #	Description	Qty.
1	54110079	Bracket, Duct Cover	1
2	50050122	Duct Cover, Upper	1
3	50050123	Duct Cover, Lower	1
4	54060010	Damper, 8" Round	1
5	54050073	Collar, Motor, 8" Round	1
6	54140097	Bracket, Electrical	1
7	11030070	Wires, Electrical	1
8	50500101	Assembly, Electrical Box	1
9	56200051	Box, Component	1
10	11010043	Control Board	1
12	54140109	Bracket, Control Wires	1
13	12120064	Motor	1
15	54140110	Bracket, LED, Side	2
16	54140111	Bracket, LED, Corner	2
17	54140112	Bracket, LED, Front	1
18	50500104	Assembly, LED Lighting	1
19	56230002	Pad, Canopy Attachment	4
20	11010049	Control Board, Lighted Glass	1
21	50300089	Canopy (30")	1
21	50300088	Canopy (36")	1
22	50130105	Panel, Bottom	1
23	54140096	Bracket, Switch, Rear	1
24	11000066	Switch Assembly	1
24-1	52170042	Housing, Switch	1
24-2	11010044	Switch Board	1
24-3	52170043	Cover, LCD Screen	1
24-4	50400011	Buttons, Switch	2
24-5	56210055	Cover, Switch	1
25	54140113	Bracket, Switch, Front	1
26	50200045	Filter, Aluminum Mesh	2
28	50500105	Assembly, Light Panel	1

28-1	11040020	Button Switch, Lighted Glass	1
28-2	54190031	Plate, Button	1
28-3	54140114	Bracket, Button	1
28-4	52170050	Cover, Button	1
28-5	50110096	Panel, Light	1
29	Z0B-0032	Bulb, Bloom LED, 3W	3
30	05000078	Hardware Packet	1
30-1	01090001	Screw, M6 x 1"	2
30-2	01090002	Screw, M6 x 1 1/2"	3
30-3	15000002	Wire Nut	3
30-4	02170001	Washer	1
30-5	01060004	Screw, M3 x 8mm	2

AUG11.0101