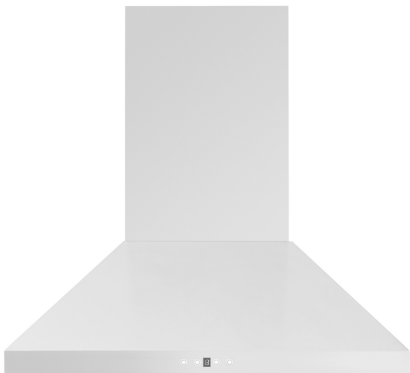


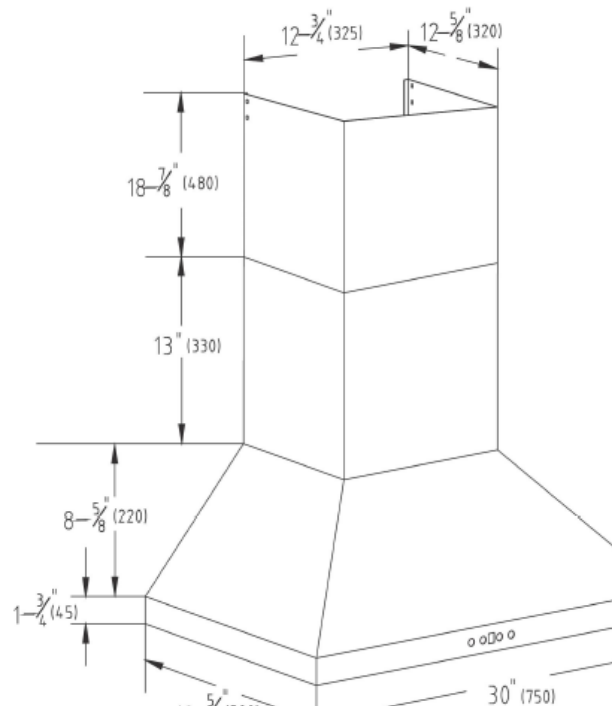


**AVO-308CS2**  
30" Wall mount hood

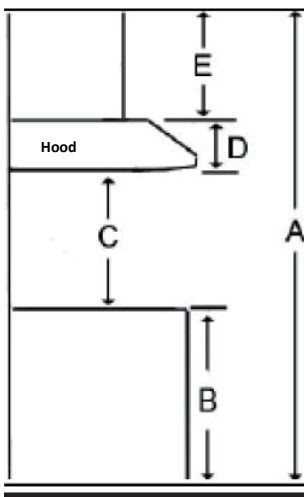


Selected Model	
Model number	AVO-308CS2
Dimensions	
Dimensions	29 1/2" (W) x 19 3/4" (D) x 10 1/4" (H)
Exterior Appearance	
Stainless steel grade	201
Features	
Control	Soft touch with LED display
Lighting	2 bulbs, 3W LED (bulbs included)
Blower type	860 CFM, 6-Speed
Blower performance	Speed 1, 1.5 sones Speed 6, 5.0 sones
Filter type	2 Stainless steel baffle filters (included)
Duct transition	6" Round (Top) 3 1/4" x 10" rectangular (Rear) 3 1/4" x 10" rectangular (Top)
Ducting	Ducted
Electrical Requirements	
Electrical requirements	120V / 60Hz / 2.7 Amps
Warranty	
1-year Warranty	Parts and labour

## Dimensions



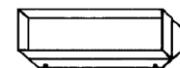
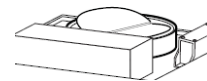
## Installation



A	Floor to ceiling height	VARIABLE
B	Floor to counter top height (standard)	36"
C	Recommended height between cooking surface and bottom of the hood	28" to 30"
D	Hood height	10.41"
E	Chimney height	$13\frac{3}{4}"$ to $32\frac{7}{8}"$

## Duct transition

6" top round



3 1/4" x 10" Top & back

*The information contained herein is based on sources that we believe to be reliable, but is not guaranteed by us, may be incomplete and/or may change without notice.*