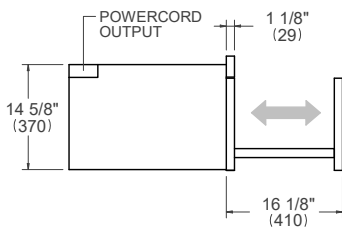
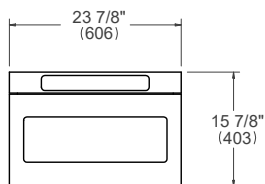


# PRODUCT DIMENSIONS

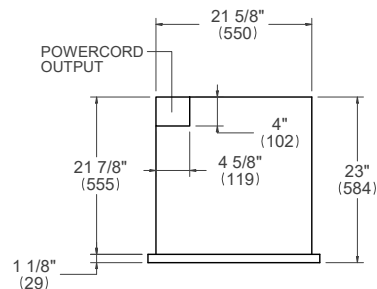
SIDE VIEW



FRONT VIEW

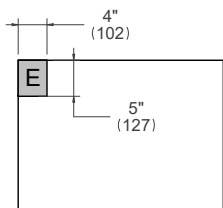


TOP VIEW



## ELECTRICAL CONNECTION

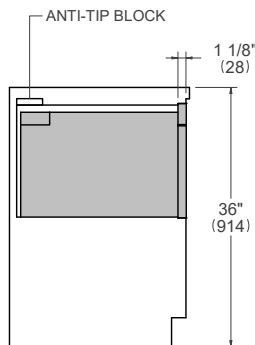
FRONT VIEW



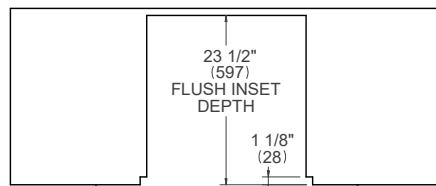
For single ovens installed into a wall cabinet, the electrical junction box may be located above, below to the left or right of the unit within reach of the power cord. Placement within the opening may require additional cabinet depth.

## CUTOUT DIMENSIONS

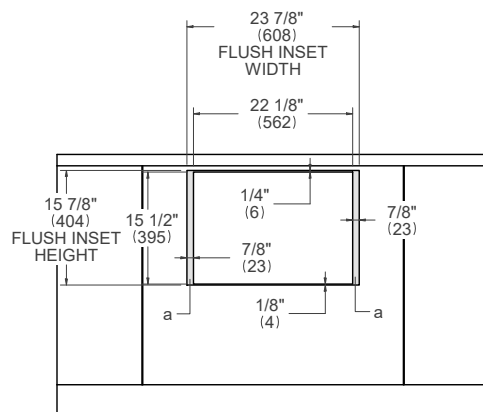
SIDE VIEW



TOP VIEW



FRONT VIEW



## INSTALLATION REQUIREMENTS

Minimum suggested load on cabinet base board is 100 lb (45 kg)

(a) Visible Area – Match finish to outside cabinet panels