

# MAST30CSEX

MASTER SERIES  
30" CONVECTION STEAM OVEN



Bring Italian design and precision into your kitchen with the Bertazzoni convection steam oven, engineered to install proud or flush in any type of kitchen cabinet.

Enjoy the flexibility of baking, broiling and steaming in a single oven. Use each cooking mode independently or in combination for amazing results.

Experience the benefits of steam and steam-assisted convection cooking, sealing in all the flavors and maintaining nutrients and food texture.

Manage cooking modes, temperature and time with the highly intuitive touch-through-glass user interface.

Enjoy the convenience of soft-motion balanced doors and no-fingerprint stainless steel.

Designed with pride by Bertazzoni in Italy.

Industry leading 2 years parts and labor warranty.

## PRODUCT FEATURES

Oven type	Combination electric convection and steam
Power rating (Rating 240V)	Convection: 1600 W Broiler: 1200 W
Oven Volume	1.34 cu.ft.
Convection System	1 Fan
User interface	Touch LED display
Auto cooking modes	Yes
Cooking modes	Broil, Convection, Convection broil, Convection steam, Steam only
Special features	Descalce, Light, Recipes, Reheat, Sterilize, Timer, Water hardness setting
Shelf levels	2
Removable water tank	33.8 fl.oz
Door hinges	Soft-motion
Included accessories	1 wire shelf flat 1 stainless steel 1 1/2" deep + 1 perforated stainless steel 3/4" deep

## TECHNICAL SPECIFICATIONS

Electrical supply	240 V 60 HZ - 3200 W 16 Amp dedicated circuit
Power connection	Metal conduit with 71" power cord
Certification	CETLUS
Warranty	2 years parts & labor
Packaging dimensions and weight	W 33 1/2" H 21 5/8" D 26 3/8" 94.5 lbs

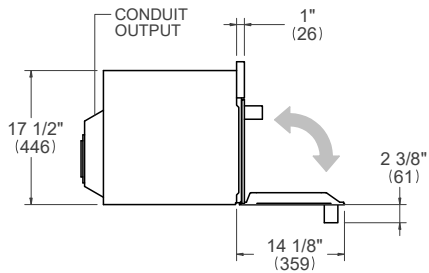
# MAST30CSEX

MASTER SERIES  
30" CONVECTION STEAM OVEN

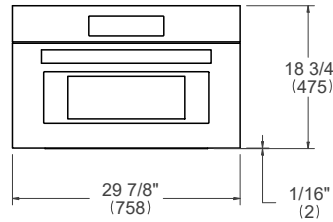


## PRODUCT DIMENSIONS

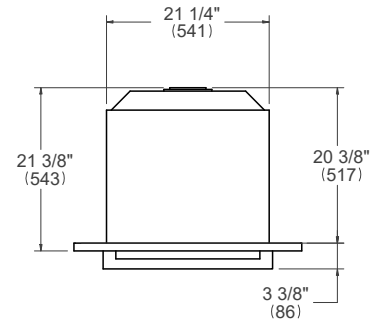
SIDE VIEW



FRONT VIEW

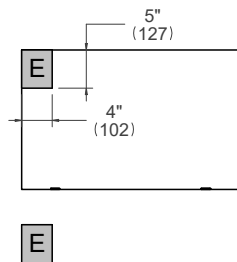


TOP VIEW



## ELECTRICAL CONNECTION

FRONT VIEW



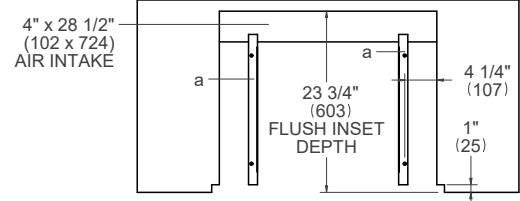
For single ovens installed into a wall cabinet, the electrical junction box may be located above, below to the left or right of the unit within reach of the power cord. Placement within the opening may require additional cabinet depth.

## INSTALLATION REQUIREMENTS

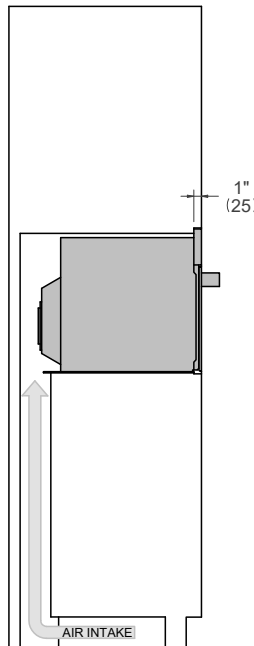
Minimum suggested load on cabinet base board is 110 lb (50 kg)

## CUTOUT DIMENSIONS

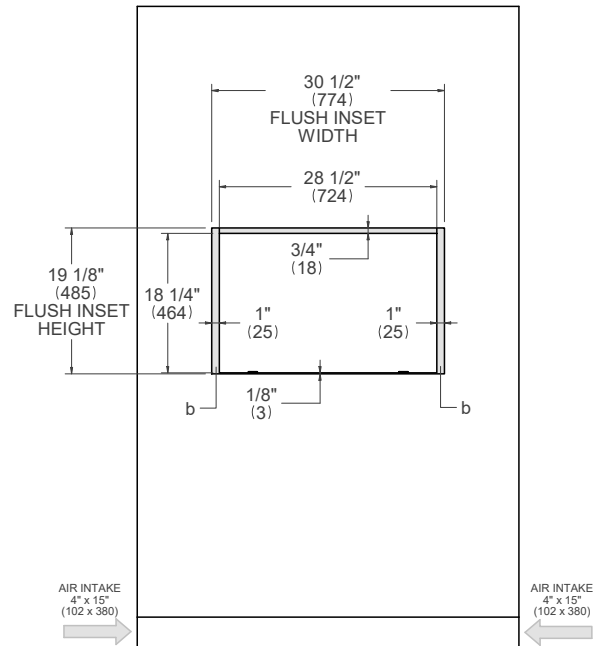
TOP VIEW



SIDE VIEW



FRONT VIEW



- (a) Spacers – Included with appliance
- (b) Visible Area – Match finish to outside cabinet panels

For installation of multiple products in combination, refer to the Design Guide at [us.bertazzoni.com](http://us.bertazzoni.com) or [ca.bertazzoni.com](http://ca.bertazzoni.com)