

Get ENERGY STAR® efficiency, optimal ventilation capacity and great lighting—all in one integrated unit

P195ES

ENERGY STAR®

rated power pack

HVI certified performance

ENERGY STAR® rated hood for ducted applications provides optimum energy savings

Heat Sentry™ detects excessive heat and adjusts speed to high automatically

Charcoal filter option available for recirculation applications (Please note: Recirculation installations will not meet ENERGY STAR® requirements)

Optional liners protect cabinets and create a beautiful finish. Shown with a custom-fabricated liner purchased locally



Hood Sizes

Width 20-1/2": P195ES52SB
27-1/2": P195ES70SB

Depth 11-1/4"

Finish

Stocked Brushed Standard Grade Stainless Steel
Special Order Not Available

Features

Light Type	Fluorescent Bulbs 13 W, G24Q-1
Number of Lamps	2
Lighting Levels	1
Lighting Lamps Included	Yes
Control Type	3-Speed slider switch
Control Features	Heat Sentry™
Control Remote	No
Filter: Standard	Aluminum Mesh Filter
Filter: Options	Not Available
Non-ducted Capability	Yes

Blower (Included)

Energy star rated internal CFM (High/Low)	290/120 (P195ES52SB) 370/120 (P195ES70SB)
Sones Max Hi/Lo	5.0/0.5 (P195ES52SB) 5.0/0.3 (P195ES70SB)

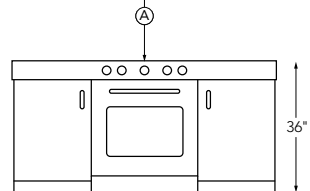
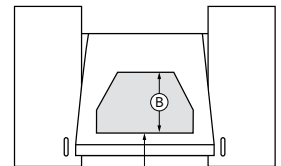
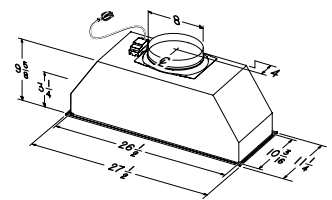
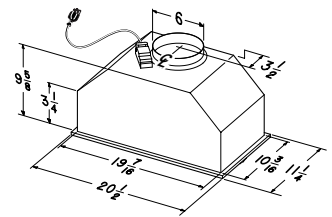


Accessories

Recirculation Filter	FILTEREB40 (for P195ES52SB) ROUNDFILTER (for P195ES70SB)
Liners: Optional	L5230 (for P195ES52SB) L7030 / L7036 / L7048 (for P195ES70SB)
Universal Make-up Air Damper: Optional	MD6TU for 6" duct (for P195ES70SB) MD8TU for 8" duct (for P195ES70SB)

Installation Requirements

Amps @ 120V	2.8 Amps
Electrical	Cord Connected
Duct Size: Internal Blower	6" Round (P195ES52) 8" Round (P195ES70)
Duct Size: External Blower	Not Available
Duct Direction	Vertical
Backdraft Damper	Included



A. Installation height above the cooking surface 24–30"

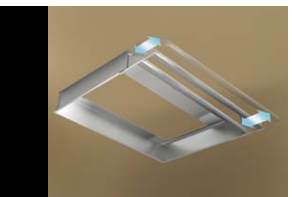
B. Distance from bottom of range hood to top of hood 9-5/8"



Two fluorescent lights provide bright cooktop lighting.



Variable 3-speed slider switch control enables the user to choose operating preference.



Protect cabinetry from steam and grease with stainless steel liners that provide a custom fit.

