

**24 INCH FRONT LOAD WASHER****WM98220SX**

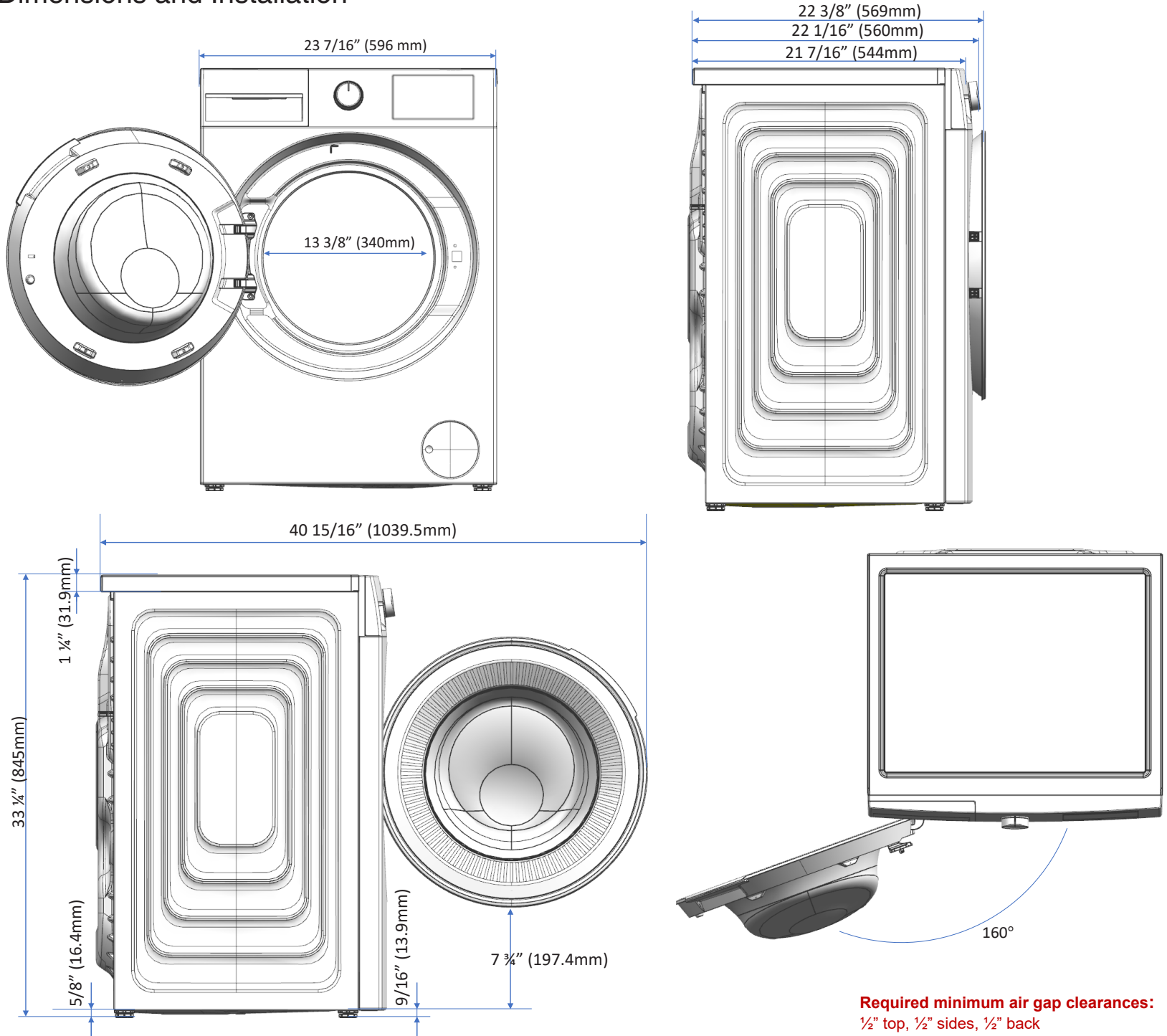
GENERAL	
Capacity cu. ft.	2.3
Washing load capacity kg	10
Washing load capacity lbs.	22
Style	Front-loading
Maximum spin speed rpm	1400
Variable spin speed	Yes
Automatic temperature control	Yes
Control	Digital Display
Delay time	0-24h
Remaining time indicator	Yes
WiFi Connectivity	Homewhiz
Drum material	Stainless steel
Detergent Dispenser	Yes
Door Lock Indicator	Yes
Adjustable leveling legs	4
CYCLES	
Number of Cycles	15
Normal	Yes
Heavy-Duty/Whites	Yes
Wrinkle Free	Yes
Allergen / Pet Care+	Yes
Dark wash / Jeans	Yes
Hand-wash	Yes
Download Cycle	Yes
Quick Wash	Yes
Rinse	Yes
Steam Therapy	Yes
Aqua-quick 20	Yes
AquaIntense	Yes
Fitness Wear	Yes
Tub Clean	Yes
Spin & Drain	Yes
FUNCTIONS	
Heavy Soil	Yes
Soak	Yes
Steam	Yes
Extra rinse	Yes
Anti-creasing	No
Child lock	Yes
Fast+	Yes
Automatic water adjustment system	Yes
Unbalance detection system	Yes
Program follower	Yes
MATERIALS AND FINISHES	
Cabinet	White
Door rim	Black
Cycle selector knob	White
DIMENSIONS	
Product Dimensions (HxWxD) in	33 1/16" x 23 5/8" x 22 13/16"
Product Dimensions (HxWxD) cm	84 x 60 x 58
Product Weight kg	78
Product Weight lbs.	171.9
TECHNICAL FEATURES	
Voltage/ Frequency	120V / 60Hz
Rated Current Amps	10
ENVIRONMENTAL STANDARDS	
Energy star qualified	Yes
Energy consumption, kWh/year	86
UL listed	Yes
RoHS compliant (Lead free)	Yes



24 INCH FRONT LOAD WASHER

WM98220SX

Dimensions and Installation



Required minimum air gap clearances:
1/2" top, 1/2" sides, 1/2" back

NOTE TO THE INSTALLER: All height, width and depth dimensions are shown in inches (as well as metric). Beko US Inc. reserves the absolute and unrestricted right to change product materials and specifications, at any time, without notice. Please visit our website www.blombergappliances.com or call 888-352-2356 to verify the latest specifications with final dimensional data and other details prior to installation and making a cutout. Applicable product limited warranty information may be found in accompanying product materials or you may contact your account manager for further details. Proper installation is the responsibility of the installer. Product failure due to improper installation is not covered under the Limited Warranty.