

Ventilation

**DUH36152UC**  
**36" Under Cabinet Wall Hood**  
**300 Series - Stainless Steel**



**Bosch Under Cabinet Hoods Complete Your Bosch Kitchen Suite With Matching User Interfaces and Sleek European Design**

- 280 CFM Blower Included
- Three Power Levels
- Dishwasher safe aluminum mesh filters
- Top or Rear Venting Options
- Ducted or Non-ducted Options

**Technical Data**

Operating Mode :	Convertible: Ducted / Recirculating
Number of speed settings :	3-stage
Optional accessories :	DHZ3602UC
Number of lights :	2
Type of lamps used :	Bulbs
Total power of the lamps (W) :	80
Grease filter material :	Washable aluminium
Grease filter type :	Multilayer cassette
UPC code :	825225846741
Material :	Stainless steel
Volts (V) :	120
Frequency (Hz) :	60
Approval certificates :	CSA, UL
Plug type :	120V-3 prong
Overall appliance dimensions (HxWxD) (in) :	4 3/4" / 4 3/4" x 36" x 20"
Overall appliance dimensions (HxWxD) (mm) :	121 MM x 914 x 508
Product packaging dimensions (HxWxD) (in) :	12.99 x 23.99 x 35.99
Required distance above cooktop/ranges :	30"/30"
Net weight (lbs) :	41
Net weight (kg) :	19.0
Gross weight (lbs) :	48
Gross weight (kg) :	22.0
Motor location :	Integrated motor in hood body
No-return airflow flap :	No

**Optional accessories**

DHZ3602UC : Charcoal filter

## Ventilation

### **DUH36152UC**

#### **36" Under Cabinet Wall Hood 300 Series - Stainless Steel**

**Bosch Under Cabinet Hoods Complete Your  
Bosch Kitchen Suite With Matching User  
Interfaces and Sleek European Design**

---

#### **Key Features**

##### **Design**

- Brushed Stainless Steel Finish
- 2 Incandescent Lights

##### **Performance**

- 280 CFM Blower Included
- Three Power Levels
- Quickly and Quietly Clears the Air of Smoke and Odor

##### **Convenience**

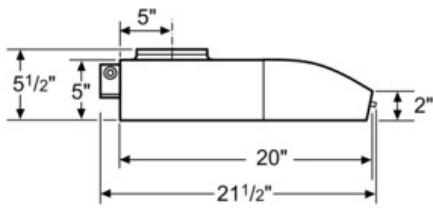
- Dishwasher-safe Mesh Filters
- Easy to Use Rotary Controls
- Top or Rear Venting Options
- Ducted or Non-ducted Options

##### **Efficiency**

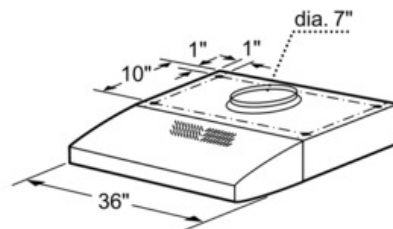
## Ventilation

**DUH36152UC**

**36" Under Cabinet Wall Hood**  
**300 Series - Stainless Steel**



Dimensions in inches



Measurements in inches