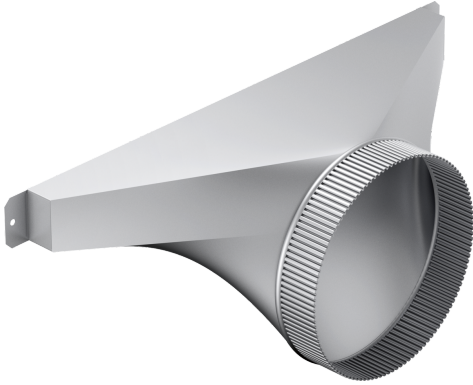


Ventilation Accessory HDDSTRAN8



8" Round Transition Enable Ducting To Be At Sides Or Rear Of Downdraft For Flexible Configurations To Maximize Your Kitchen Design

- 8" Round Transition Enable Ducting To Be At Sides Or Rear Of Downdraft For Flexible Configurations To Maximize Your Kitchen Design
- Customize The Direction Of Duct Discharge To Be Left, Right, Or Rear
- Rectangular 1-7/8" x 19" Transition To 8" Round
- Ability To Use With Ducting Or Elbows With 8" Round Duct Connection
- Some Blower Positions May Need Deeper Cabinets. See Installation Guide



Ventilation Accessory HDDSTRAN8

8" Round Transition Enable Ducting To Be At Sides Or Rear Of Downdraft For Flexible Configurations To Maximize Your Kitchen Design

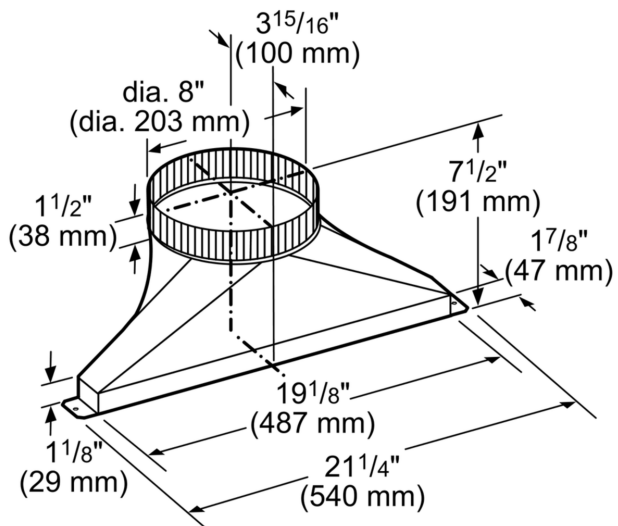
Design

- Customize The Direction Of Duct Discharge To Be Left, Right, Or Rear
- Rectangular 1-7/8" x 19" Transition To 8" Round
- Ability To Use With Ducting Or Elbows With 8" Round Duct Connection
- Some Blower Positions May Need Deeper Cabinets. See Installation Guide

Performance

- For DHG602DUC Flexible Downdraft Blower Used As Inline Installation
- See Installation Guide For Details

Ventilation Accessory HDDSTRAN8



measurements in inches (mm)