

Ventilation

500 Series - Stainless Steel DUH36252UC 36" Under Cabinet Wall Hood



Bosch Under Cabinet Hoods Complete Your Bosch Kitchen Suite With Matching User Interfaces and Sleek European Design

- 400 CFM Blower Included
- Four Power Levels
- 2 Halogen Lights
- Dishwasher safe aluminum mesh filters
- Ducted or Non-ducted Options

Technical Data

Operating Mode :	Convertible: Ducted / Recirculating
Number of speed settings :	4-stage
Required accessories :	Recirc Kit
Optional accessories :	DHZ3602UC
Number of lights :	2
Type of lamps used :	Halogen
Total power of the lamps (W) :	100
Grease filter material :	Washable aluminium
Grease filter type :	Multilayer cassette
UPC code :	825225846772
Material :	Stainless steel
Volts (V) :	120
Frequency (Hz) :	60
Approval certificates :	CSA, UL
Plug type :	120V-3 prong
Overall appliance dimensions (HxWxD) (in) :	4 3/4" / 4 3/4" x 36" x 20"
Overall appliance dimensions (HxWxD) (mm) :	121 MM x 914 x 508
Product packaging dimensions (HxWxD) (in) :	12.99 x 23.99 x 35.99
Required distance above cooktop/ranges :	30"/30"
Net weight (lbs) :	41
Net weight (kg) :	19.0
Gross weight (lbs) :	48
Gross weight (kg) :	22.0
Motor location :	Integrated motor in hood body
No-return airflow flap :	No

Optional accessories

DHZ3602UC : Charcoal filter

Ventilation

500 Series - Stainless Steel DUH36252UC 36" Under Cabinet Wall Hood

Bosch Under Cabinet Hoods Complete Your Bosch Kitchen Suite With Matching User Interfaces and Sleek European Design

Key Features

Design

- Brushed Stainless Steel Finish
- 2 Halogen Lights

Performance

- 400 CFM Blower Included
- Four Power Levels
- Quickly and Quietly Clears the Air of Smoke and Odor

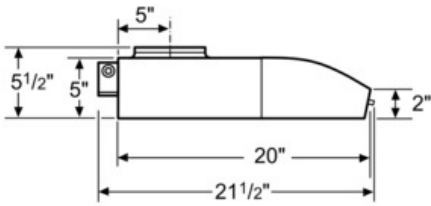
Convenience

- Easy to Use Rotary Controls
- Dishwasher-safe Mesh Filters
- Top or Rear Venting Options
- Ducted or Non-ducted Options

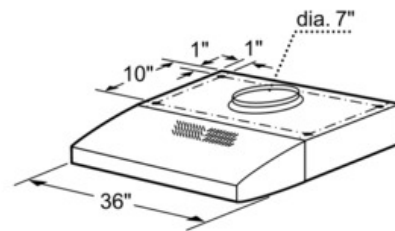
Efficiency

Ventilation

500 Series - Stainless Steel DUH36252UC 36" Under Cabinet Wall Hood



Dimensions in inches



Measurements in inches