

We put a lot of effort into giving you as little as possible.



ENERGY STAR® and Bosch



Bosch Home Appliances

North America Corporate Office
1901 Main Street
Irvine, CA 92614
1.800.944.2904
www.bosch-home.com/us

Bosch Home Appliances Canada

5800 Explorer Drive, Suite 310
Mississauga, Ontario, L4W 5K9
1.800.944.2904
www.bosch-home.ca



©2012 BSH Home Appliances Corporation. ©2012 BSH Home Appliances Ltd. All rights reserved. Bosch is a registered trademark of Robert Bosch GmbH. All information presented herein is based on data available at the time of printing and is subject to change without notice.

BSH#6310-0144 Date: 04/2012



Content

Bosch uses ingenious technology and smart engineering to make appliances that improve not only our daily lives, but the future as well.

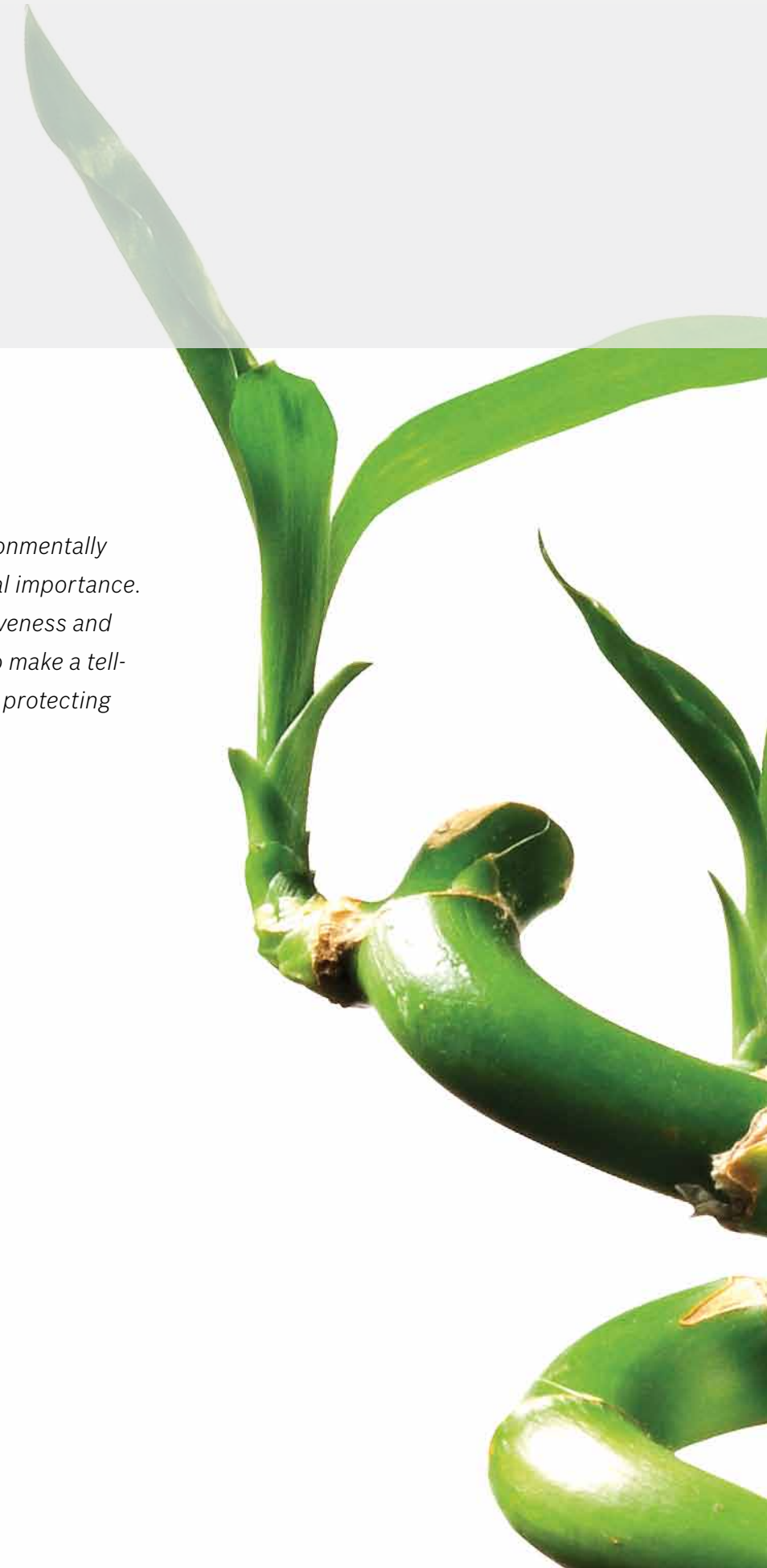
1 ENERGY STAR®	8 Refrigerators	14 Laundry
4 Dishwashers	10 Refrigerators—money-savings	16 Laundry—money-savings
6 Dishwashers—money-savings	11 Refrigerators—energy-saving tips	19 Laundry—energy-saving tips
7 Dishwashers—energy-saving tips		20 Bosch and sustainability

“For us, developing energy-efficient and environmentally friendly home appliances is an issue of central importance. In doing so, we not only secure our competitiveness and safeguard the jobs of our employees, but also make a telling contribution to conserving resources and protecting the environment.”



Dr. Kurt-Ludwig Gutberlet

Chairman of the BSH Board of Management



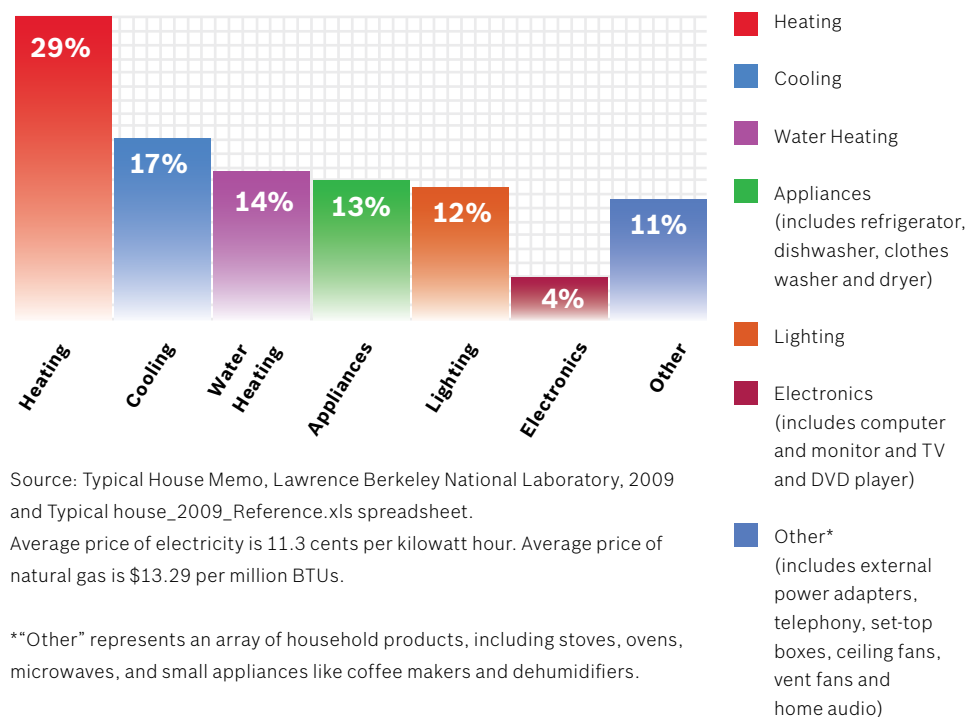
ENERGY STAR®

As the only U.S. manufacturer with ALL models ENERGY STAR® qualified in every major appliance category, it's no wonder Bosch has been awarded the ENERGY STAR® Sustained Excellence award for two years in a row. This is ENERGY STAR®'s highest honor, recognizing Bosch for its outstanding contribution to reducing greenhouse emissions by manufacturing water- and energy-efficient appliances.



With the help of ENERGY STAR® appliances, Americans save billions on energy bills annually and reduce greenhouse gas emissions to the equivalent of 29 million vehicles. ENERGY STAR is a joint program of the U.S. Department of Energy and the U.S. Environmental Protection Agency dedicated to helping consumers identify energy-efficient appliances. (Learn more at www.energystar.gov)

The annual energy bill for a typical single home is approximately \$2,200.



Source: Typical House Memo, Lawrence Berkeley National Laboratory, 2009 and Typical house_2009_Reference.xls spreadsheet.

Average price of electricity is 11.3 cents per kilowatt hour. Average price of natural gas is \$13.29 per million BTUs.

**Other* represents an array of household products, including stoves, ovens, microwaves, and small appliances like coffee makers and dehumidifiers.



Did you know?



Around 33% of residential energy use is driven by home appliances.

Dishwashers

We invest all our energy so you can save more of it at home.



Efficiency

Exceeding the 2012 ENERGY STAR® requirements is impressive. Building the most efficient line in the U.S.* amazing. Doing both makes us Bosch. Our advanced EcoSense® Wash Management System measures soil levels, then adjusts water and heat usage automatically to reduce energy usage by up to 20%.

ActiveWater™

Technology that utilizes design, water pressure and efficiency to turn two gallons of water into the cleaning power of more than 1,300.

Most efficient

The 800 Plus is the most efficient dishwasher in the U.S.* At 180 kilowatt hours per year, the 800 Plus uses 49% less energy than the federal standard.

Water efficiency

Bosch makes water work better by using less of it. Advanced systems save nearly two gallons per cycle compared to the average dishwasher, and ensure optimal cleaning performance.

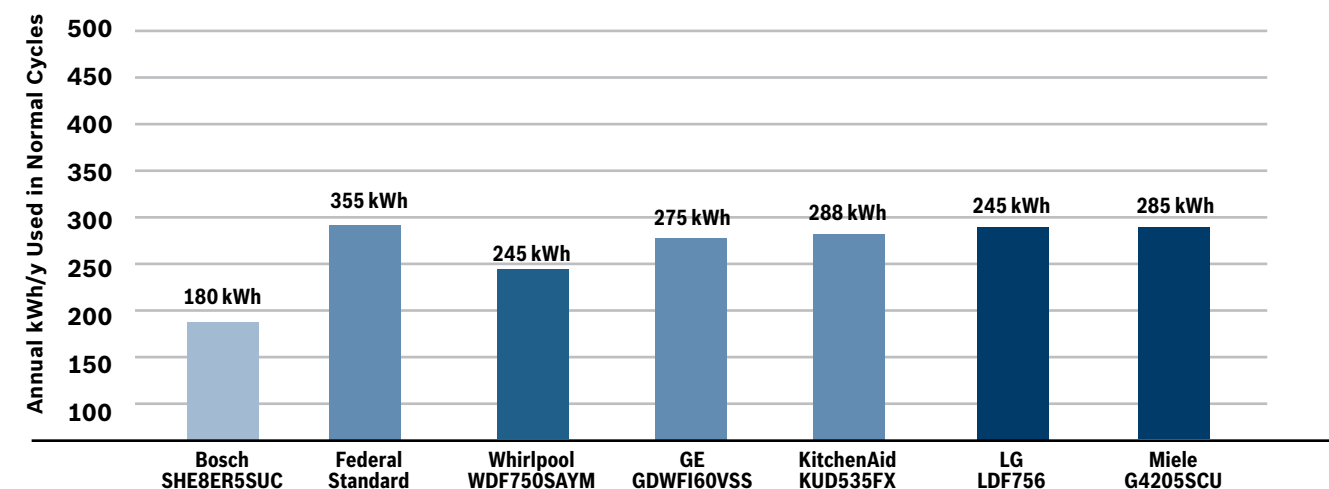
EcoAction®

When activated, automatic adjustments are made to the water temperature and cycle length for optimal efficiency, allowing you to reduce energy usage by up to 25%.

Flow-through water heater

Bosch dishwashers channel 100% of the water through tight coils in a confined heating chamber, which heats the water quickly and efficiently.

Bosch energy usage vs. industry average vs. competition



Source: Energy Star Web April 2012, AHAM: Shipment Weighted Averages for Standard Size Dishwashers, 2011 shipments, based on DOE Energy Test Procedure.

* Based on the average energy and water usage of leading brands, as calculated by ENERGY STAR, April 2012.

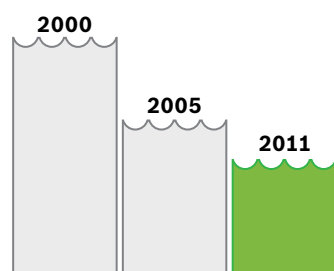
Energy-saving tips

At 180 kilowatt hours per year, the 800 Plus dishwasher is 49% better than the federal standard.*

51%

Less Water Usage

As a result of development and innovation, we've been able to cut our appliance water consumption by more than half since the 1990s.



Water usage 2000-2011

During the production process, our factories have significantly reduced the use of fresh water from the public supply while overall water requirements in our factories have fallen every year on record.

Save energy

Our advanced EcoSense® Wash Management System measures soil levels, then adjusts water and heat usage automatically to reduce energy usage by up to 20%.

Save money

Using an ENERGY STAR® qualified dishwasher instead of a conventional dishwasher can cut utility bills by more than \$40 per year.*

Save water

A dishwasher built before 1994 wastes more than 10 gallons of water per cycle compared to owning a new ENERGY STAR® qualified model. Replace one of these old dishwashers with an ENERGY STAR® qualified model and save enough water each week to wash three extra dish loads.

Save the environment

If every U.S. dishwasher purchased was an ENERGY STAR® qualified Bosch 800 series dishwasher instead of a conventional model, the lifetime energy savings are equivalent to preventing 21 billion pounds of carbon dioxide emissions from releasing into our atmosphere.

Save your hearing

Bosch dishwashers are as quiet as 39 dBA. With a suspended two-pump motor system, vibration and noise are drastically reduced. Bosch layers three levels of sound-absorbing insulation into our dishwashers to further reduce the operating volume.

Scrape, don't rinse

Rinsing dishes can waste up to 20 gallons of water before the dishes are even loaded. When used in combination with detergents, ENERGY STAR® qualified dishwashers are designed to do the cleaning for you, so you don't have to. If your dirty dishes are going to sit overnight, use your dishwasher's rinse feature. It uses a fraction of the water needed to hand rinse.

Using the Bosch Half Load option

For smaller loads, choose the Half Load option and use about 30% less water and electricity, without sacrificing any performance.

Get good drying results with less energy

Use a rinse agent for drying instead of the heated dry feature.

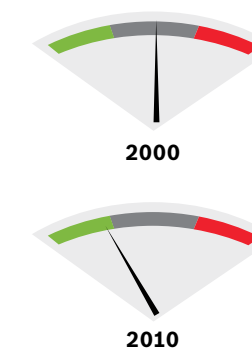
Run your Bosch dishwasher at night

By running your dishwasher after 7 p.m., you save money by running during off-peak hours.

19%

Energy Usage

One of the most significant means of reducing manufacturing consumption is to ensure that all products are designed to minimize environmental impact and conserve resources.



As a result, we redesigned our dishwasher packaging to allow for three-high stacking on a standard trailer, as opposed to only two, resulting in 50% more product shipped with no increase in fuel consumption.



Did you know?



Washing your dishes every day in a dishwasher rather than by hand saves up to 12,000 liters of water per year; equivalent to 200 showers or one month of water consumption for a family of four.

* <http://www.energystar.gov>

Refrigerators

Efficient by design

VitaFresh™

At Bosch we know about maintaining the right balance of temperature and humidity for your food. Unlike other refrigerators that just keep things cold, smart VitaFresh technology maintains the optimal temperature and humidity levels automatically, allowing items to stay fresher, longer. VitaFresh drawers provide optimal food storage, keeping up to 14% more vitamin C in your food and retaining 20% more moisture content than conventional refrigerators.*

- **Directional air flow system**

An ingenious airflow system utilizing a special ventilation channel allows air to pass over and around the produce drawers. This keeps temperatures at a consistent, ideal level for the contents within, and keeps your food well chilled and even better preserved.

- **Automatic humidity control**

This unique lining maintains the ideal humidity for all types of produce by regulating how much or how little moisture is required for the produce stored in the drawers, keeping foods crisp, healthy and delicious.

Most energy-efficient

The 30" Bosch built-in bottom freezer is the most energy-efficient in its class.** It is certified CEE Tier 2—an important recognition for brands dedicated to efficiency and high-value offerings.

ENERGY STAR® qualified

Every Bosch refrigerator is ENERGY STAR qualified. With efficient features, such as an alarm indicating that the door is ajar, Vacation Mode and Economy Mode, Bosch can significantly reduce your energy bills.

EcoControl

Saves energy with easily accessible outside controls. Independently change the refrigerator and freezer settings without ever opening the refrigerator or bottom freezer drawers.

High-efficiency compressor

This compressor uses less energy to operate the refrigerator, is quieter, and creates less heat while running than a traditional compressor.



*VitaFresh results are based on an independent study performed against Bosch conventional refrigerators.
 **Class defined by similarly priced and designed models of major brands. According to 2010 AHAM Shipment Weighted Averages and minimum water usage of the normal cycle of this Bosch dishwasher.

Savings



Sustainability

Sustainability, responsibility and continuous improvement are the tenets of Bosch's commitment to reducing the environmental impact of our products during each phase of their life cycle—from manufacturing to everyday use in your home.

We are committed to sustainability.

Bosch was “green” long before Al Gore made it fashionable. For forty years, we've strived to set the standards in innovation using intelligent technology for higher performance and greater user convenience. Being successful in these areas means that many of our home appliances actually exceed ENERGY STAR® qualifications and are among the most energy efficient in the world. But our commitment to the environment doesn't stop there. We apply the same standards of eco-consciousness to our production methods, and support those leading the way in the fields of green construction and design. From concept to crate and beyond, we are committed to sustainability throughout the product's life cycle.

Save money

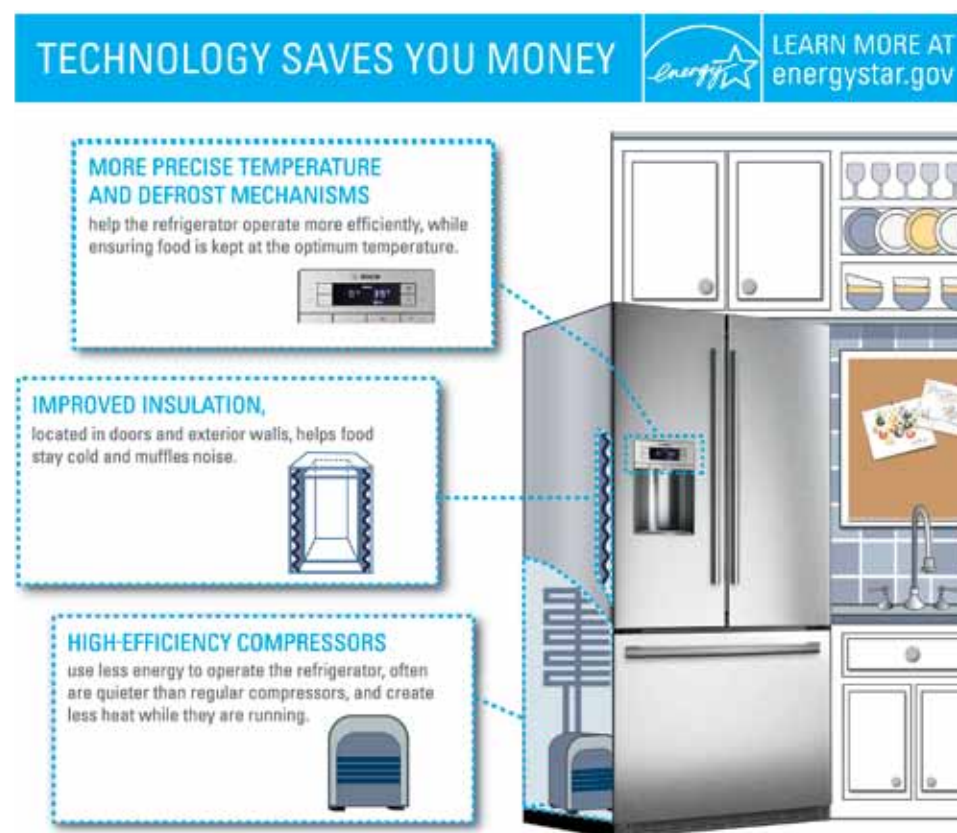
Replacing a conventional refrigerator with a new ENERGY STAR® qualified one can save you up to \$200 each year.*

Save your food

A directional air flow system and automatic humidity controls help keep perishable foods fresh longer.

Save the environment

If every U.S. refrigerator purchased in 2010 was a Bosch, the lifetime energy savings would be equivalent to preventing 26 billion pounds of carbon dioxide emissions being released into our atmosphere.



*<http://www.energystar.gov>

Product recycling

Not only are reusable materials something Bosch relies on to save energy and cut costs, recycling is also an important component of the production process.

Why recycle?

According to the Steel Recycling Institute, 18 million households' worth of electricity is saved each year by recycling appliances. The typical appliance contains about 75% steel, which can be recycled into cans, new cars, or any number of other steel products, keeping production costs and energy consumption down. Steel recycling also conserves precious natural resources. According to the Association of Home Appliance Manufacturers (AHAM), it takes four times more energy to manufacture steel from virgin ore as it does to make the same steel from recycled scrap. Refrigerators also include a refrigerant, such as Freon, that must be captured by a certified technician to ensure that it isn't released into the air, where it can damage the ozone layer.

How do I recycle my old appliances?

Your local solid waste organization, garbage company, or municipal government may take used appliances for a small fee or offer free curbside pickup on certain days. According to the Appliance Recycling Information Center, there are 11,000 appliance-recycling locations nationwide. Use the Steel Recycling Institute's database (www.recycle-steel.org/) to find the recycling facility closest to you. You can also call 1-800-YES-1-CAN.

Some states are requiring recycling of used appliances as part of the American Recovery and Reinvestment Act of 2009-funded State Energy Efficiency Appliance Rebate Program (SEEARP). Some may also offer higher rebates for recycling. In addition, local utilities and energy-efficiency organizations support a growing number of refrigerator and freezer recycling programs. Some programs offer cash to recycle your old fridge; others offer utility bill credits. Find out if there are any special offers or rebates currently available on ENERGY STAR® qualified products in your area.*

www.energystar.gov/index.cfm?fuseaction=rebate.rebate_locator



Recycling

Bosch relies on reusable and recyclable materials while recycling all of its wood, glass, cardboard and paper—we even require our preferred suppliers to adhere to environmental policies similar to our own. We also believe it's important to work with, support and recognize nonprofits and organizations who share our values. Below are recycling programs that can help pave the way to a more sustainable future:

1-800-RECYCLING
www.1800recycling.com

ENERGY STAR Recycling Refrigerators
www.energystar.gov/index.cfm?c=recycle.pr_refrigerator_rec

Appliance Recycling Center of America
www.arcainc.com

Earth 911
www.earth911.com

My Green Electronics
www.digitaltips.org

Waste Wisex
www.epa.gov/epawaste/partnerships/wastewise/index.htm

Ecology Action
www.ecoact.org

Recycler
www.recycler.com

Planet Green
www.planetgreen.discovery.com

Energy-saving tips



Want to learn more?

If you want to know more about energy- and money-savings for a specific refrigerator model, visit www.energystar.gov/refrigerators and follow the link to the ENERGY STAR Refrigerator Retirement calculator.

Place your fridge in a cool place

Position your refrigerator away from a heat source such as the oven or direct sunlight from a window.

Allow air to circulate behind the fridge

Leave a space between the wall or cabinets and the refrigerator or freezer, and keep the condenser coils clean.

Check the door seals

Make sure the refrigerator seals around the door are airtight.

Temperature

Keep your refrigerator between 35 and 39 degrees Fahrenheit and your freezer at 0 degrees Fahrenheit.

Keep the door closed

Minimize the amount of time the refrigerator door is open.



Did you know?



An old refrigerator, prior to the Energy Label, consumed the equivalent energy of a radiator. Nowadays, the consumption of an A+ (EU Energy Label) refrigerator is equivalent to an electric bulb!



Laundry

So efficient, we'll clean your conscience too.

ENERGY STAR® qualified

Bosch clothes washers are ultra-efficient. In fact, they exceed Energy Star® requirements by up to 68%.

Automatic wash system

We created a simple approach that allows you to quickly and easily select a cycle that automatically determines the weight of clothing and suds. The automatic wash system then adjusts the water level, temperature and spin speeds to manage your cleaning tasks, and ensures that no extra water or energy is wasted. Of course, there may be occasion to override Bosch's programs, in which case you can customize your own program and command the machine's cycle yourself.

SensoTronic® Plus

Our network of sensors are designed to maximize efficiency while delivering superior cleaning performance. The load sensor adjusts the amount of water in each load depending on size, and the thermostat-controlled heater monitors the water temperature, ensuring that no energy is wasted. Cycle time is also regulated, so you always run your machine for the optimum length.



Bosch laundry technology saves you money.

Intelligent drying system

An intelligent network of sensors ensure the perfect drying results by maintaining the exact drying temperature, monitoring moisture left in your clothes and preventing wrinkles before they start.

Condensation drying

Offering the latest technology on the market, condensation drying condenses the moisture in the hot air and releases it through the water drain. This way, no ducting and no blower are necessary to help expel hot air. This makes installation easy, fast and cost-effective.

Wool Cycle

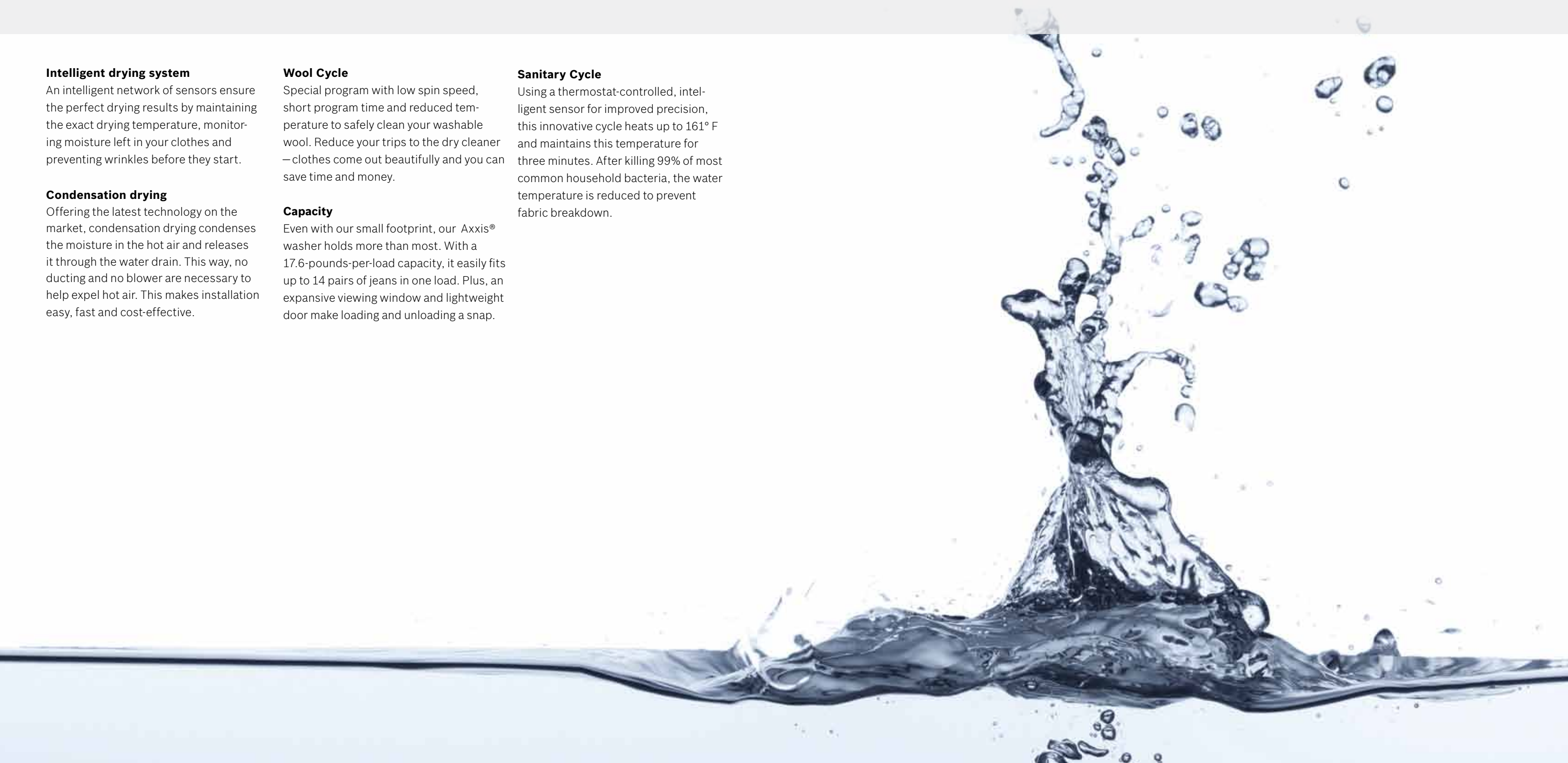
Special program with low spin speed, short program time and reduced temperature to safely clean your washable wool. Reduce your trips to the dry cleaner — clothes come out beautifully and you can save time and money.

Capacity

Even with our small footprint, our Axxis® washer holds more than most. With a 17.6-pounds-per-load capacity, it easily fits up to 14 pairs of jeans in one load. Plus, an expansive viewing window and lightweight door make loading and unloading a snap.

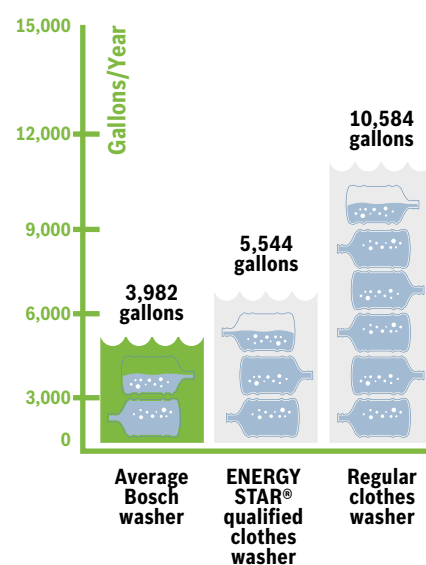
Sanitary Cycle

Using a thermostat-controlled, intelligent sensor for improved precision, this innovative cycle heats up to 161° F and maintains this temperature for three minutes. After killing 99% of most common household bacteria, the water temperature is reduced to prevent fabric breakdown.



Savings

Residential clothes washer Water consumption



An ENERGY STAR® qualified clothes washer can save up to 5,040 gallons of water per year compared to a regular clothes washer.

Save energy

A thermostat-controlled heater in our washers monitors water temperature to ensure that no energy is wasted.

Save money

Replacing your non-ENERGY STAR® clothes washer with an ENERGY STAR® model can cut your energy costs by \$135 each year. That's like getting your High Efficiency (HE) detergent free year-round. If every clothes washer purchased in the U.S. this year earned the ENERGY STAR, we would save 790 million kWh of electricity, 32 billion gallons of water, and 2 trillion BTUs of natural gas every year, resulting in energy bill savings of about \$350 million every year.

Save the environment

If everyone in the U.S. purchased an ENERGY STAR qualified Bosch washer instead of a conventional model, the lifetime water savings would amount to over 90,000 gallons.



Save time

Without a bulky agitator there is more usable space in the tub for laundry—Bosch Axxis® washers can handle up to 40 shirts in one load. Also, more capacity means fewer loads of laundry each week. Some agitator-free washers can wash over 20 pounds of laundry at once, compared to 10–15 pounds for a conventional top-loader.

Save your hearing

An advanced 3D sensor system and anti-vibration sidewalls drastically reduce vibration and noise from unbalanced loads during the spin cycle. This is especially important in homes where the laundry system is installed on the second story. No vibrations will be transmitted to the floor and ceiling below, ensuring safe and quiet operation.

Save your clothes

Instead of twisting and pulling clothes around a turning agitator, these products wash clothes gently. This lengthens the life of often-washed items and leads to less lint in the dryer. Because they are so gentle, many models can safely clean silk, wool, and other hand-washables. Bosch washers offer cycle settings for delicates/silk, wool and hand wash.

Energy-saving tips

Fill it up

Run full loads whenever possible.

Wash in cold

It takes a lot of energy to heat water. Use the cold cycle when you can.

Dry on low

Drying on low is more efficient and uses less energy.

Sanitary cycle

Using a thermostat-controlled, intelligent sensor for improved precision, this innovative cycle heats up to 161° F and maintains this temperature for three minutes. After killing 99% of most-common household bacteria, the water temperature is reduced to prevent fabric breakdown.

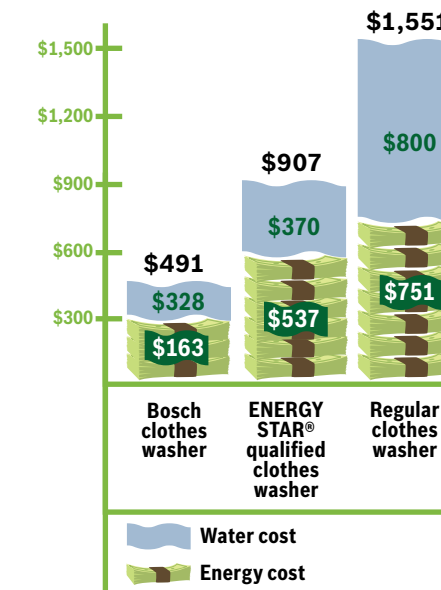


Did you know?



In 1985, washing machines consumed around 34.87 gallons of water; today Bosch's Axxis washers use only 10.4 gallons per cycle. Ninety percent of the energy needed is used to warm this water!

Residential clothes washer Lifetime operation costs



Though it may seem cheaper at first, a regular clothes washer can cost \$644 more to operate over its life compared to an ENERGY STAR® qualified clothes washer.

Bosch and sustainability

Bosch regards sustainability as more than energy-savings or ecology. Bosch interprets sustainability as a fundamental focus aimed at responsible long-term management. Our interpretation of sustainability also includes the personal value of health and the preservation of genuine values like integrity and honesty. A decisive role in the sustainability of our products is of course also played by the Bosch bedrock value, quality. Only long-serving, practical products can create genuine benefits and thus be sustainable.

