



Connect your refrigerator – to the future.





The future begins now in your home! We are glad you have chosen Home Connect *

Congratulations on your refrigerator of tomorrow, which will make your everyday life easier and more agreeable.

More convenient.

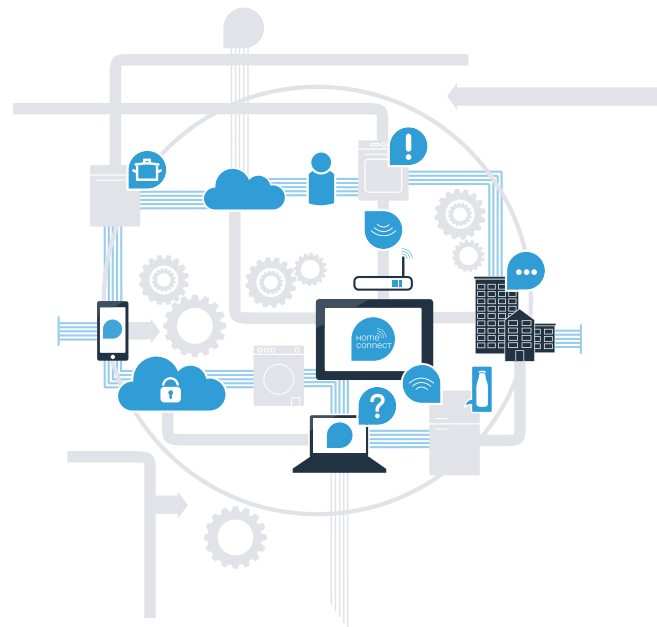
Home Connect lets you control your home appliances* whenever you want and wherever you want. Simply and intuitively using a smartphone or tablet. This saves you bother and waiting around, and you have more time for the things that are truly important to you.

More straightforward.

Using the app's cleverly designed touchscreen, you can adjust operating settings such as audible signals or even individual programs. It's even simpler and more straightforward than on the appliance itself, plus you have direct access to a host of data, operating manuals and even numerous instructional videos.

More connected.

Let yourself be inspired! Discover numerous extras that have been tailor-made just for your appliances: recipe collections, tips on using your appliances and much more. Compatible accessories can be ordered at any time with just a few clicks.



* The availability of the Home Connect functionality depends on the availability of the Home Connect Services in your country. Home Connect Services are not available in every country – for further information please check: www.home-connect.com.



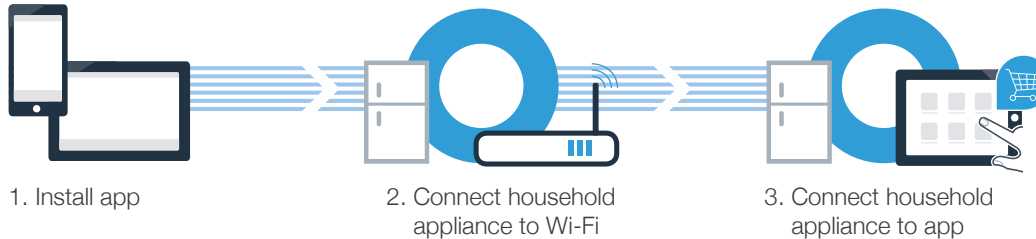
What do you need to connect your refrigerator to Home Connect?

- A smartphone or tablet, equipped with the latest version of the relevant operating system.
- A home network signal (Wi-Fi) at the location where the appliance is fitted.
Name and password for your home network (Wi-Fi):

Network name (SSID): _____

Password (key): _____

Three steps to make your daily routine easier:



www.home-connect.com

Step 1: Installing the Home Connect app

A On your smartphone or tablet, go to the App Store (Apple devices) or Google Play Store (Android devices).

B Enter „Home Connect“ in the Store’s search field.

C Select the Home Connect app and install it on your smartphone or tablet.

D Start the app and create your Home Connect login details. The app will guide you through the registration process. Don't forget to make a note of your e-mail address and password afterwards.

Home Connect login details:

E-Mail: _____

Password: _____



Please check availability at www.home-connect.com





Step 2 (initial start-up): Connecting your refrigerator to your home network (Wi-Fi)

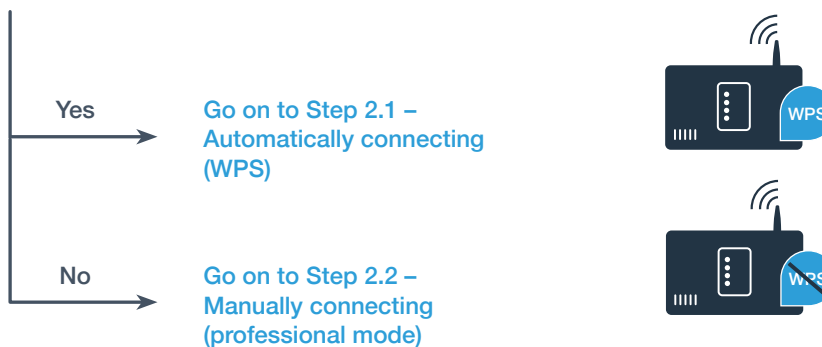


A Connect the appliance and switch it on.



B Check whether your home network router has a WPS function (automatic connection).
Some routers have e.g. a WPS button. (You will find information about this in the manual for your router.)

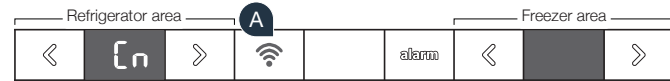
C Does your router have a WPS function (automatic connection)?



Step 2.1: Automatically connecting your refrigerator to your home network (Wi-Fi)



- A** Press the „Wi-Fi“ button. The temperature display panel of the refrigerator compartment shows „Cn“ (Connectivity = Home Connect menu).



- B** In the refrigerator area keep pressing the „<“ button until the temperature display panel of the refrigerator compartment shows „AC“ (automatic connection), and the temperature display panel of the freezer compartment shows „OF“.



- C** In the freezer area press the „>“ button to start automatic connection. An animation now appears on the display panel for 2 minutes. Perform the steps below during this period.



- D** Activate the WPS function on your home network router within the next 2 minutes. (Some routers have a WPS/Wi-Fi button, for example. You will find information about this in the manual for your router.)





Step 2.1: Automatically connecting your refrigerator to your home network (Wi-Fi)



- E** If connection is successful, „On“ appears on the temperature display panel of the freezer compartment.
Now go on to Step 3.

If „OF“ appears on the display panel for 3 seconds, it was not possible to establish a connection within 2 minutes. Start again with point A or connect manually (Step 2.2).



If the appliance is not operated for a prolonged period, the menu closes automatically. Start again with point **A**

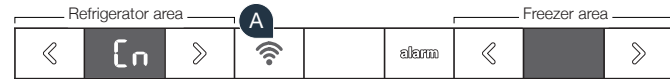


Step 2.2: Manually connecting your refrigerator to your home network (Wi-Fi)

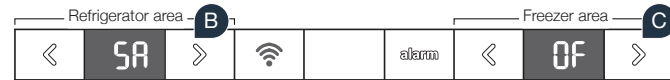


Most Wi-Fi routers have a WPS function. If the Wi-Fi router present does not have a WPS function, or if this is unknown, you can also connect the refrigerator to the home network manually.

- A** Press the „Wi-Fi“ button. The temperature display panel of the refrigerator compartment shows „Cn“ (Connectivity = Home Connect menu).



- B** In the refrigerator area keep pressing the „>“ button until the temperature display panel of the refrigerator compartment shows „SA“ (manual connection), and the temperature display panel of the freezer compartment shows „OF“.



- C** In the freezer area press the „>“ button to start manual connection. An animation now appears on the temperature display panel of the freezer compartment for max. 5 minutes. Perform the steps below during this period.



Tip:

During manual connection, your refrigerator sets up its own Wi-Fi network (soft access point [SAP]) which you can log into using your smartphone or tablet.

If the appliance is not operated for a prolonged period, the menu closes automatically. Start again with point

A



Step 2.2: Manually connecting your refrigerator to your home network (Wi-Fi)



D Your refrigerator has now set up its own Wi-Fi network (SSID) „**HomeConnect**“ for data transfer, which you can access using your smartphone or tablet.

E To find this, go to the general settings menu on your smartphone or tablet and call up the Wi-Fi settings.

F Connect your smartphone or tablet to the „**HomeConnect**“ Wi-Fi network (SSID) (the Wi-Fi password [key] is also „HomeConnect“). The connection process may take up to 60 seconds!

G Once successfully connected, open the Home Connect app on your smartphone or tablet.

H If you have not yet been asked for the network name (SSID) and password (key) for your home network (Wi-Fi), you will be prompted to enter them into the corresponding fields as soon as the appliance has been found.



Step 2.2: Manually connecting your refrigerator to your home network (Wi-Fi)



I Then follow the instructions in the Home Connect app.



J If connection is successful, „On“ flashes on the temperature display panel of the freezer compartment.






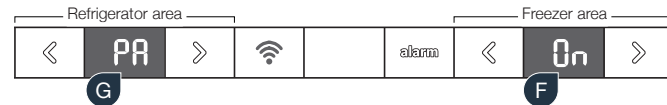
„OF“ appears on the display panel. The connection could not be established within 5 minutes. Check whether the refrigerator is within range of the home network (Wi-Fi) and repeat the process if necessary.



Step 3: Connecting your refrigerator to the Home Connect app



- A** Keep pressing the „“ button until the temperature display panel of the refrigerator compartment shows „PA“ (pairing = connection between refrigerator and app).
- B** In the freezer area press the „>“ button to connect the refrigerator to the app. An animation appears on the display panel.
- C** If connection is successful, the temperature display panel of the freezer compartment shows „On“, and the „“ button lights up blue.
- D** Pick up your mobile device. Select „+“ (add) in the Home Connect app as soon as your refrigerator is displayed there. If your refrigerator is not displayed automatically, press „Appliance search“ and then „Connect an appliance“ in the app.
- E** Follow the instructions in the app to complete the process.
- F** If connection is successful, the temperature display panel of the freezer compartment shows „On“ for 3 seconds, and the „“ button lights up blue.
- G** You have now successfully connected your refrigerator to your app! Following successful connection, the temperature display panel of the refrigerator compartment shows „PA“ and the temperature display panel of the freezer compartment „On“.



Connection failed: Ensure that your smartphone or tablet is within your home network (Wi-Fi). Repeat the processes described in Step 3. If „Er“ appears on the display panel, you can reset your refrigerator. You can find further information about resetting and more tips in the instruction manual.



Home Connect: simply heading into
a networked future with strong partners.



If you have any questions, just visit us at
www.home-connect.com
or call: 18009442904



Home Connect is a service of BSH Home Appliances Corporation.

Apple App Store and iOS are Apple Inc. trademarks.
Google Play Store and Android are Google Inc. trademarks.
WiFi is a WiFi Alliance trademark.

8001037938 (9606) en-us