

COMPONENTS FOR CENTRAL VACUUM SYSTEMS



V110
90° Sweep Elbow
2 in. (51 mm) dia.



V124
90° Tee
2 in. (51 mm) dia.



V118
45° Spigot Elbow
2 in. (51 mm) dia.



V125
90° "Y"
2 in. (51 mm) dia.



V120
45° Short Elbow
2 in. (51 mm) dia.



V126
Short Tee
2 in. (51 mm) dia.



V121
90° Medium Turn Elbow
2 in. (51 mm) dia.



V127
Coupling
2 in. (51 mm) dia.



V122
90° Short Elbow
2 in. (51 mm) dia.



V129
Joint Cement (118 ml)



V123
45° "Y"
2 in. (51 mm) dia.



V131
PVC Tubing
2 in. (51 mm) dia.
10 ft. (3.0 m) length

V131-5
PVC Tubing
2 in. (51 mm) dia.
5 ft. (1.5 m) length

Broan-NuTone Canada, Mississauga, Ontario www.broan.ca 877-896-1119

REFERENCE	QTY.	REMARKS	Project
			Location
			Architect
			Engineer
			Contractor
			Submitted by
			Date

CENTRAL VACUUM COMPONENTS



V132
30° Short Elbow
2 in. (51 mm) dia.



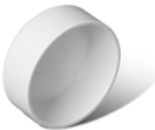
V139
Inlet Valve Extension



V133
Low Voltage Wire
100 ft. (30.5 m)



V140
Tubing Strap
2 in. (51 mm) dia.



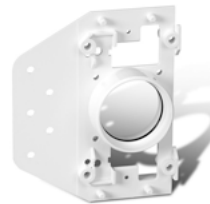
V134
Tubing Cap
2 in. (51 mm) dia.



V142
Exterior Wall Cap



V135
Temporary Plaster
Guard



V144
Plastic Mounting Plate



V138
Cover Plate with Screws



V153
90° Medium Turn Spigot Elbow
2 in. (51 mm) dia.