

# COMPONENTS FOR CENTRAL VACUUM SYSTEMS



**V110**  
90° Sweep Elbow  
2 in. (51 mm) dia.



**V124**  
90° Tee  
2 in. (51 mm) dia.



**V118**  
45° Spigot Elbow  
2 in. (51 mm) dia.



**V125**  
90° "Y"  
2 in. (51 mm) dia.



**V120**  
45° Short Elbow  
2 in. (51 mm) dia.



**V126**  
Short Tee  
2 in. (51 mm) dia.



**V121**  
90° Medium Turn Elbow  
2 in. (51 mm) dia.



**V127**  
Coupling  
2 in. (51 mm) dia.



**V122**  
90° Short Elbow  
2 in. (51 mm) dia.



**V129**  
Joint Cement (118 ml)



**V123**  
45° "Y"  
2 in. (51 mm) dia.



**V131**  
PVC Tubing  
2 in. (51 mm) dia.  
10 ft. (3.0 m) length

**V131-5**  
PVC Tubing  
2 in. (51 mm) dia.  
5 ft. (1.5 m) length

Broan-NuTone Canada, Mississauga, Ontario [www.broan.ca](http://www.broan.ca) 877-896-1119

REFERENCE	QTY.	REMARKS	Project
			Location
			Architect
			Engineer
			Contractor
			Submitted by
			Date

## CENTRAL VACUUM COMPONENTS

---



**V132**  
30° Short Elbow  
2 in. (51 mm) dia.



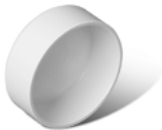
**V139**  
Inlet Valve Extension



**V133**  
Low Voltage Wire  
100 ft. (30.5 m)



**V140**  
Tubing Strap  
2 in. (51 mm) dia.



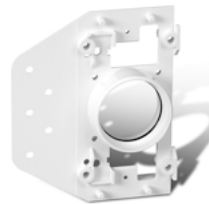
**V134**  
Tubing Cap  
2 in. (51 mm) dia.



**V142**  
Exterior Wall Cap



**V135**  
Temporary Plaster  
Guard



**V144**  
Plastic Mounting Plate



**V138**  
Cover Plate with Screws



**V153**  
90° Medium Turn Spigot Elbow  
2 in. (51 mm) dia.