

COMPONENTS FOR CENTRAL VACUUM SYSTEMS



V382XS
90° Short Elbow
2" (51 mm) dia.



V124
90° Tee
2" (51 mm) dia.



V110
90° Sweep Elbow
2" (51 mm) dia.



V125
90° "Y"
2" (51 mm) dia.



V118
45° Spigot Elbow
2" (51 mm) dia.



V126
Short Tee
2" (51 mm) dia.



V120
45° Short Elbow
2" (51 mm) dia.



V127
Coupling
2" (51 mm) dia.



V121
90° Medium Turn Elbow
2" (51 mm) dia.



V129
Joint Cement (118 ml)



V122
90° Short Elbow
2" (51 mm) dia.



V131
PVC Tubing
2" (51 mm) dia.
10' (3.0 m) length



V123
45° "Y"
2" (51 mm) dia.

V131-5
PVC Tubing
2" (51 mm) dia.
5' (1.5 m) length



V132
30° Short Elbow
2" (51 mm) dia.

Broan-NuTone Canada Inc., Mississauga, Ontario, Canada L5T 1H9 (1-888-882-7626)

REFERENCE	QTY.	REMARKS	Project
			Location
			Architect
			Engineer
			Contractor
			Submitted by Date

CENTRAL VACUUM COMPONENTS



V133
Low Voltage Wire
100 ft. (30.5 m)



V144
Plastic Mounting Plate



V134
Tubing Cap
2" (51 mm) dia.



V153
90° Medium Turn Elbow
2" (51 mm) dia.



V135
Plaster Guard with Screws



V329
Inlet Mounting Plate



V138
Cover Plate with Screws



V362
90° Short Flanged Elbow
2" (51 mm) dia.



V139
Inlet Valve Extension



V363
90° Long Flanged Elbow
2" (51 mm) dia.



V140
Tubing Strap
2" (51 mm) dia.



V364
Flanged Tee
2" (51 mm) dia.



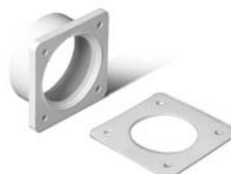
V141
Inlet Valve Bracket



V365
Double Flanged Tee
2" (51 mm) dia.



V142
Exterior Wall Cap



V366
Flanged Coupling