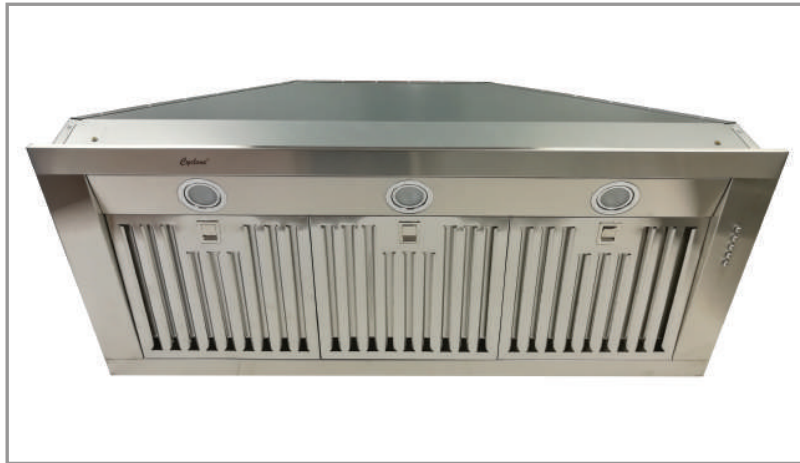


BXB612 | PRO Collection



Insert

Introducing Cyclone's latest addition, the BXB612 insert: discreet, quiet, and remarkably potent, delivering a distinct to your culinary endeavors. Designed for high-heat cooking, it features dishwasher-safe stainless steel baffle filters. With three-speed push buttons and two vivid LED lights, you have complete mastery.

Green Features



3 Speed Push Button
Control Panel



Dishwasher Safe
Baffle Filters



Long-lasting
LED Light Bulbs



Model	Colour	Ducting	Filters	Size	CFM	Fits Cabinet
BXB61234	Stainless Steel	8"	Baf fle	34"	1200	36"
BXB61240	Stainless Steel	8"	Baf fle	40"	1200	42"
BXB61246	Stainless Steel	8"	Baf fle	46"	1200	48"

Cyclone Range Hoods Inc.

1361 Huntingwood Drive, Unit 16. Toronto, ON. M1S 3J1. Canada.

Toll Free: 1-888-293-5662 Tel: (416) 293-0933

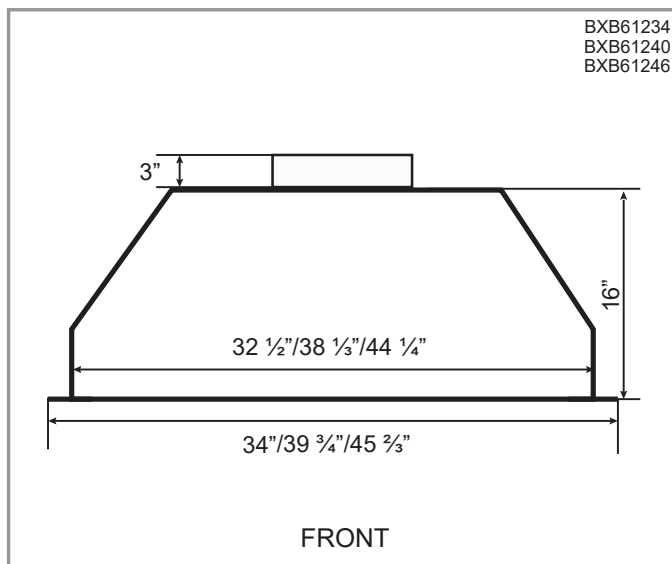
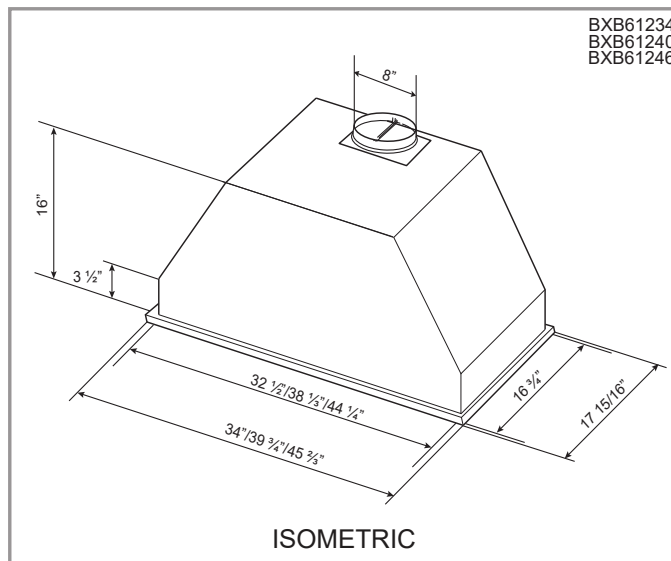
Fax: (416) 293-4793 Website: www.CycloneRangeHoods.com

BXB612 | PRO Collection



Features

- Insert range hood
- 8" round duct adapter
- Non-stick aluminum fan blades
- 3 speed push button control
- Quick release dishwasher-safe baffle filters
- 3 LED lights (3 x 1.4W, 4000K)
- 3 minutes time-delay OFF feature
- Plug-in connection



Options

- Widths: 34", 40", 46"

Specifications

- Air Flow Volume: 1200 CFM
- Electrical Connection: 120 V/60 Hz
- Power Consumption: TBD

- Current: TBD
- Fan Speed: TBD
- Fan Type: Centrifugal Blower

- Finishes: Stainless Steel
- Ducting: 8" Round
- Noise Level: Min. TBD
Max. TBD

