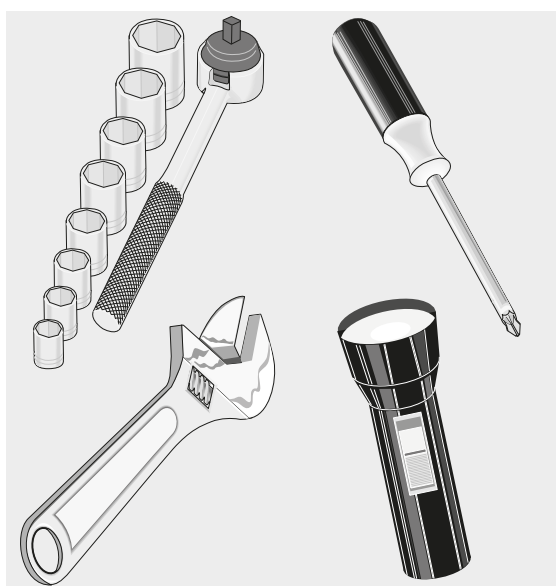




Dishwasher

Installation Instructions



INSTALLER: Leave Installation Instructions with owner.
OWNER: Read your dishwasher Use & Care Guide. It contains important safety information for operating this appliance. It also has many suggestions for getting the best results from your dishwasher. Keep these instructions with your Use & Care manual for future reference.

If you have an installation problem, contact your dealer or installer. You are responsible for providing adequate electrical, exhausting and other connecting facilities.

Skill Level: Installation of this dishwasher requires basic mechanical and electrical skills. Proper installation is the responsibility of the installer. Product failure due to improper installation is not covered under the warranty.

Completion Time: 1 to 3 Hours. New installations require more time than replacement installations.

Safety Precautions: The following warnings, cautions, and the important safety instructions DO NOT cover all possible conditions and situations that may occur. It's your responsibility to use common sense, caution, and care when installing, maintaining, and operating the dishwasher DO NOT attempt to install or operate your unit until you have read the safety precautions in this manual. Safety items throughout this manual are labeled with a Danger, Warning, or Caution based on the risk type.

Printed in U.S.A. P/N: A16738701 RevA (1904)

Safety Precautions: The following warnings, cautions, and the important safety instructions do not cover all possible conditions and situations that may occur. It's your responsibility to use common sense, caution, and care when installing, maintaining, and operating the dishwasher DO NOT attempt to install or operate your unit until you have read the safety precautions in this manual. Safety items throughout this manual are labeled with a Danger, Warning, or Caution based on the risk type.

Definitions

⚠ This is the safety alert symbol. It is used to alert you to potential personal injury hazards. Obey all safety messages that follow this symbol to avoid possible injury or death.

⚠ DANGER

DANGER indicates an imminently hazardous situation which, if not avoided, will result in death or serious injury.

⚠ WARNING

WARNING indicates a potentially hazardous situation which, if not avoided, could result in death or serious injury.

⚠ CAUTION

CAUTION indicates a potentially hazardous situation which, if not avoided, may result in minor or moderate injury.

➔ IMPORTANT

Indicates installation, operation, or maintenance information which is important but not hazard-related.

1 Before You Begin

⚠ WARNING

Read and observe all CAUTIONS and WARNINGS shown throughout these instructions before installing dishwasher. This guide will help you anticipate drain, water, and electrical connections, and help you select the best location for the dishwasher.

As with all equipment using electricity, water and moving parts, potential hazards exist. To safely operate this appliance, become familiar with its operation and exercise care when using it.

⚠ WARNING

ELECTRIC SHOCK HAZARD
 Prior to removal of original dishwasher and the installation of your new unit, make sure to switch off your circuit breaker. Do not connect the dishwasher until you have completed the installation. Connecting the power cable is the last step when installing the dishwasher.

⚠ WARNING

Install and store the dishwasher inside, away from exposure to weather.
 DO NOT install the dishwasher in a location where the water may freeze (where the temperature falls below 32°F (0°C)). Frozen water in the hoses, pipes, or other components may damage the dishwasher.

⚠ WARNING

TIP OVER HAZARD

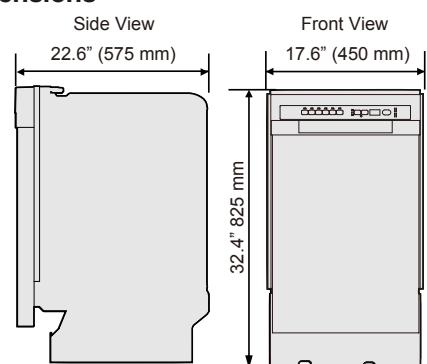
- DO NOT use dishwasher until completely installed.
- DO NOT push down or place excessive weight on open door.

⚠ WARNING

ELECTRIC SHOCK HAZARD
 • Electrically ground the dishwasher.
 • Connect the ground wire to the green ground connector in the junction box.
 • DO NOT use extension cord.
 To reduce the risk of electrical shock, fire, or personal injury, the installer must ensure that the dishwasher is completely enclosed at the time of installation.

2 Preparing for Installation

Product dimensions



🗨 NOTE

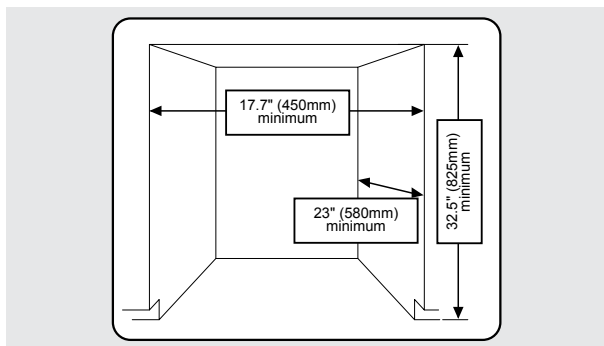
Water supply line, power cable and drain hose will run through the bottom channels from the back to the front connections.

Enclosure dimensions

🗨 NOTE

This dishwasher is designed to be enclosed on the top and on both sides by a standard residential kitchen cabinet unit. The installation enclosure must be clean and free of any obstructions.

The enclosure must be at least 17.7 inches wide 23 inches deep and 32.5 inches high. For the front door of the dishwasher to be flush with the leading edge of the counter top, the counter top must be at least 23 inches deep.



Materials and Tools

Before starting the installation, prepare all the necessary tools and parts required to install the dishwasher. This will save installation time and simplify the installation process.

Parts Supplied*

- Installation brackets (x2)
- ST3.5"9 screws (x2) for installation bracket
- ST4"14 screws (x2) for installation bracket
- Condensation strip
- Adjustment caps (x2)
- Cable tie for drain hose
- Adjustable toeplate
- Power cable (if not able to hard wire)
- PTFE thread seal tape or sealing compound

Tools needed for installation

- Drill and appropriate bits
- Safety glasses
- Gloves
- Flashlight
- Adjustable wrench
- Wire stripper
- Pliers
- Nipper
- Measuring tape
- Pencil
- Phillips screwdriver
- Flat screwdriver
- Tubing cutter
- Utility knife
- Hole saw set
- Level
- Rubber connector
- Hose clamp
- Phillips screwdriver
- Flat screwdriver
- Tubing cutter
- Utility knife
- Hole saw set
- Level
- Torx® T20 driver
- Hex L-wrench set

* Provided with the dishwasher. Check that all parts are present when unpacking the dishwasher.

➔ IMPORTANT

DO NOT use plastic tubing. Plastic tubing can deteriorate over time and cause a leak inside the tube fitting.
 Copper tubing with a compression fitting or a flexible stainless steel braided hot water supply line should be used for the hot water supply line.

3 Roughing In

🗨 NOTE

New installation
 If the dishwasher is a new installation, most of the installation work must be done before the dishwasher is moved into place.

Replacement
 If the dishwasher is replacing an old dishwasher, you must check the existing dishwasher connections for compatibility with the new dishwasher. Replace the existing connections as necessary.

1. Make sure your location has the right drain, water, and electrical outlets to make the connections. DO NOT install unit under a cooktop range, damage to plastic tub will occur.

➔ IMPORTANT

If unit is to be placed in a corner, there must be at least a 2" side clearance to open door.

- The location must have a solid floor that is able to support the weight of the dishwasher.
 - The location must be near a sink with easy access to the water supply, drain, and electrical outlet.
 - The dishwasher must be installed within 9.8 ft (3 m) of the sink.
 - The location must have sufficient space for the dishwasher door to open easily and provide enough space between the dishwasher and the cabinet sides of at least 0.1 in (2 mm).
 - The back wall of the enclosure must be free of obstructions.
2. Remove any carpet from area to provide motor clearance. Floor should be flat and free of any obstruction.

⚠ WARNING

FIRE HAZARD

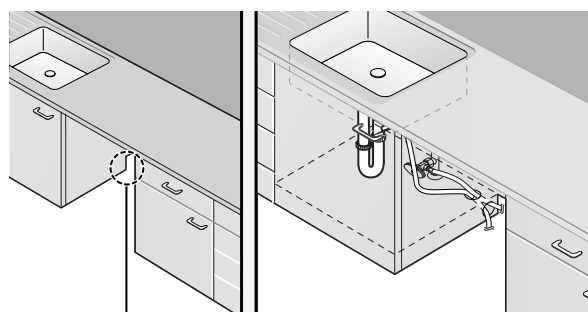
Do not install the dishwasher on a carpet.

➔ IMPORTANT

Drain, water, and electrical lines should be roughed-in before going any further.

For new installations only

1. Using a hole saw, cut a hole into the side of the cabinet that holds the sink for water line supply, drain hose and power cables, as shown below.
2. If the base inside the sink cabinet is raised above the kitchen floor and is higher than the connections on the dishwasher, make a hole in the base inside the cabinet and in the cabinet side.



🗨 NOTE

Depending on where your electrical outlet is, you may need to cut a hole in the opposite cabinet side.

4 Connections (Water and Electrical)

⚠ WARNING

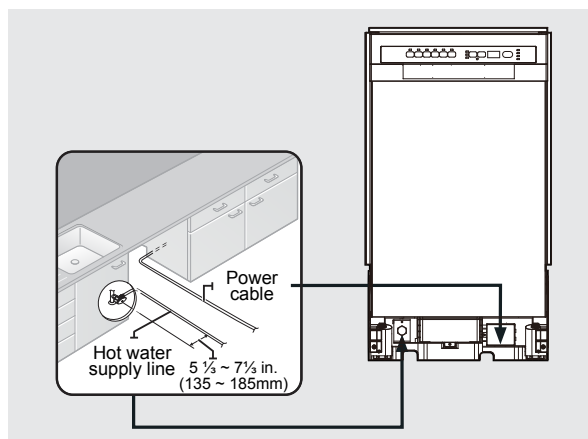
ELECTRIC SHOCK HAZARD
 Observe all local codes and ordinances for electrical and plumbing connections. All electrical and plumbing work should be performed by qualified persons. Failure to follow this warning could result in death or serious injury.

Preparing Hot Water Line Connection

➔ IMPORTANT

The hot water supply line pressure must be between 20 psi–120 psi (0.14 MPa–0.82 MPa).

1. Adjust the water heater to deliver water between 120°F (49°C)–135°F (57.2°C). This temperature range provides the best washing result and shortest cycle time. Temperature should not exceed 135°F (57.2°C) to prevent damage to dishes.
2. Turn OFF water supply valve.
3. Seal the hot water supply line connections using Teflon tape or sealing compound to stop any water leakage.



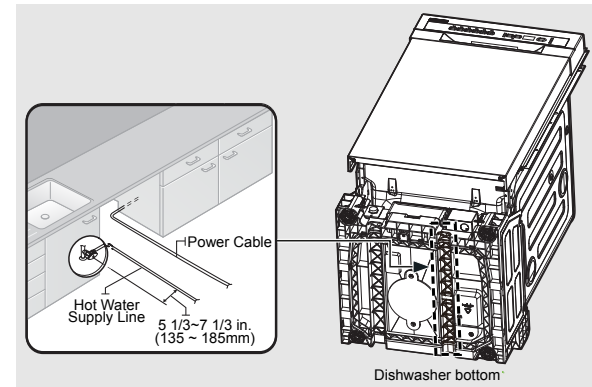
Preparing Electrical Line Connection

⚠ WARNING

ELECTRIC SHOCK HAZARD
 The electrical service must conform with all state, municipal, provincial and/or local codes and ordinances and the latest edition of the National Electrical Code, or in Canada, the Canadian Electrical Code CSA C22.1 latest edition.

⚠ WARNING

ELECTRIC SHOCK HAZARD
 Direct connections require:
 • The use of flexible, armored or non-metallic sheathed, copper wire with a grounding wire that meets the wiring requirements for your local codes and ordinances.
 • The use of strain relief method provided with the wiring junction box or install a U.L.-listed/CSA-certified clamp connector to the wiring junction box. If using conduit, use a U.L.-listed/CSA-certified conduit connector.



5 Unpacking and Inspection

Unpacking the dishwasher

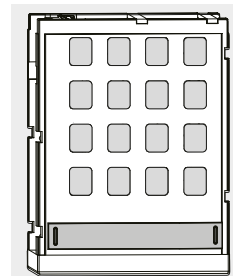
➔ IMPORTANT

Unpack the dishwasher in an open area free of obstruction both around the carton and overhead. Retain the carton and all of the packing materials until the dishwasher is fully installed and operational to ensure you have removed all the product's components from the carton prior to disposal.

⚠ WARNING

ALWAYS LIFT THE DISHWASHER TO MOVE IT. Sliding it over rough surfaces can damage the dishwasher's feet and sliding the feet over finished surfaces can, in some cases, damage that finish or the underlying surface.

1. Cut or unbuckle the four straps securing the top of the carton.
2. Lift the carton up and over the dishwasher and place it on the floor.
3. Place the straps and all packing materials from around the dishwasher inside the empty carton, inspecting them for any signs of damage.
4. Lift the dishwasher from the carton tray, and then place it on the floor.
5. Locate and set aside the dishwasher's installation parts package and toeplate. The toeplate is attached to bottom of the carton tray. Place carton tray into the carton.



🗨 NOTE

Remove toeplate and parts package from the bottom of the carton tray.

6. Remove the bag that protects the dishwasher during shipping.

➔ IMPORTANT

DO NOT, under any circumstances, remove the sound-absorbent padding that surrounds the exterior of the tub of the dishwasher.

7. There is also packing inside the dishwasher that you may want to leave in place until the dishwasher is installed.

Inspecting the dishwasher

Mechanical inspection

1. Check the plastic base assembly to ensure that it is intact.
2. Check the dishwasher's feet to ensure they are in place and can be adjusted so you can level and secure the dishwasher.
3. Check all the visible components on the bottom of the dishwasher to ensure they are intact and secure.
4. Check the door latch, the operation of the hinges, and confirm the door is properly secured to the dishwasher.
5. Remove the two screws securing kickplate to dishwasher and remove kickplate. Set aside kickplate and screws to replace when unit is installed.

Plumbing inspection

1. Check the hot water connection on the left side at the front of the base of the dishwasher. The mounting plate should be secured to the front of the base, the threads inside the connection should be smooth and shiny, and the area should be clean and free of any debris.
2. Check the plastic Brake and Sensor cases to ensure these assemblies are not cracked and that all connections are secure.
3. Check the drain hose for any holes or deformities that could allow a water leak during draining.

Electrical inspection

1. Confirm the junction box cover is secured to the junction box on the front right-side of the base of the dishwasher.
2. Confirm the electrical box was not damaged during shipping and that it is secured to the base of the dishwasher.

Visual inspection

1. Confirm there are no dents or scratches on the front of the dishwasher.
2. Check the edges of the doors for any roughness or cracking.
3. Check the control panel to ensure it is clear and unscratched, and that all the control markers are in their proper places.

Required parts

Confirm that you have all the parts supplied by the manufacturer (see the Material and Tools section of this Installation Instruction).

6 Installing the Dishwasher

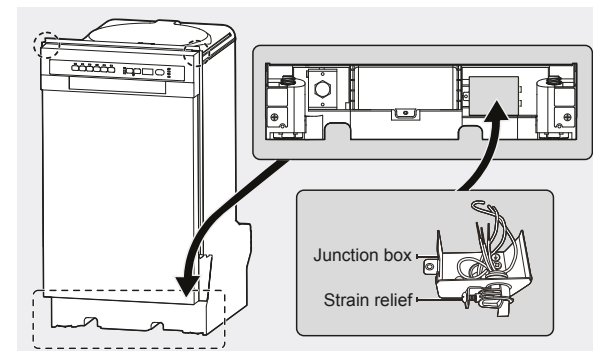
Preparing the dishwasher

⚠ WARNING

ELECTRIC SHOCK HAZARD
 Disconnect electrical power at the fuse box or circuit breaker box before removing old dishwasher or beginning new installation. Failure to follow this warning could result in death or serious injury.

Verify that the circuit breaker and water supply valve are off before proceeding with the following steps.

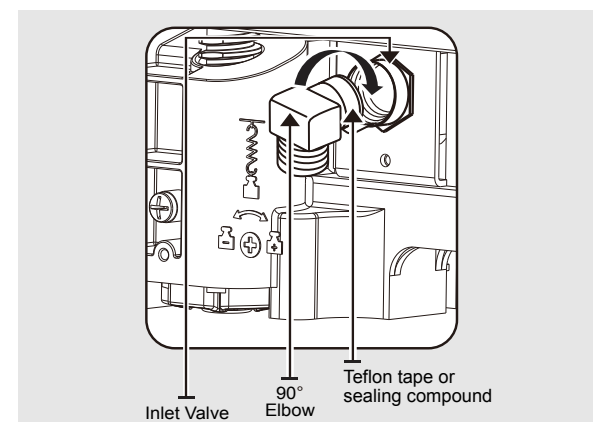
1. Make sure there are no kinks in the water hose and that it is not bent at any angles that could constrict the flow of water.
2. Remove the junction box cover located at the bottom front right of the dishwasher using a screwdriver, and install the strain relief. Keep the junction box cover to replace after wiring is completed.



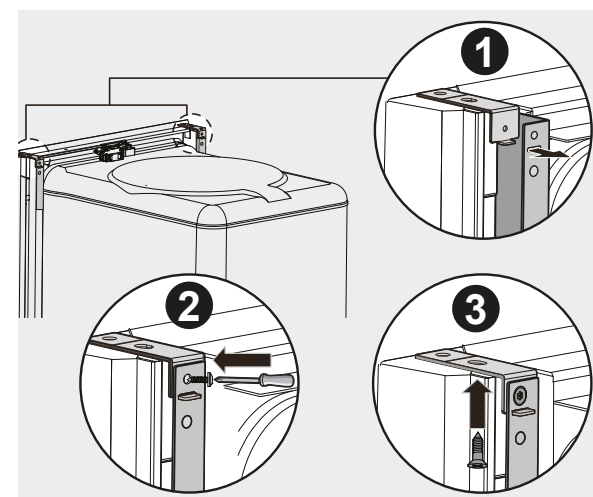
3. Connect the 90° elbow joint to the inlet valve from the front of the dishwasher. Use Teflon tape or sealing compound to secure.

⚠ CAUTION

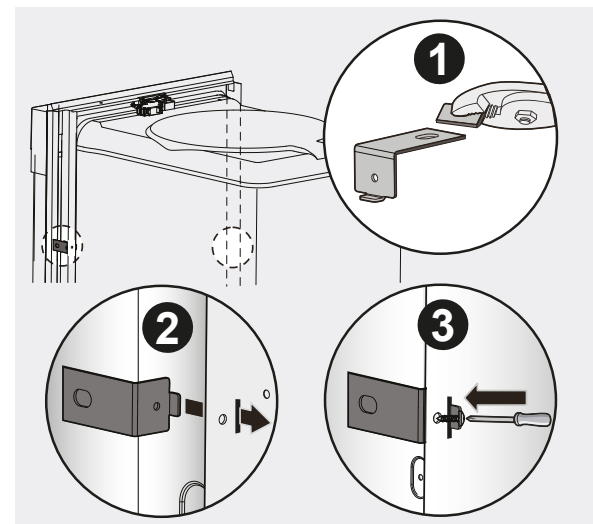
Do not overtighten the 90° elbow. Doing so may damage the water inlet valve and cause a water leak.



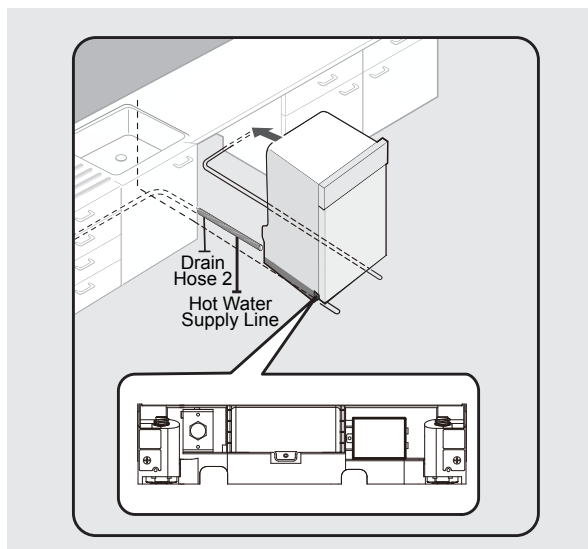
4. **Secure dishwasher to the countertop if the countertop is made of wood or a material that is not damaged by drilling.** To attach the two installation brackets to the top of the dishwasher, insert each bracket tab into the corresponding slot on the top of the dishwasher. Tighten using screws ST3.5"9 provided with the unit.



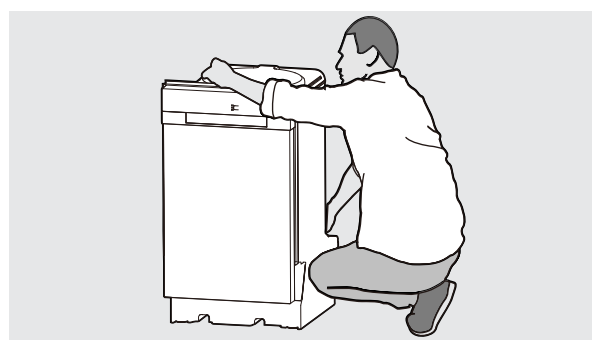
Secure dishwasher to the cabinet side wall if the countertop can be damaged by top mounting the unit. To attach the two installation brackets to the side of the dishwasher, remove the adjustment caps from the sides of the unit. Use pliers to snap off the end of the long leg of the bracket. Insert each bracket tab into the corresponding slot on the side of the dishwasher and tighten using screws ST3.5"9 provided with the unit.



- Adjust the four leveling legs at the bottom of the dishwasher after measuring the height of the cabinet opening from under the countertop to the floor. (See Step 8, Leveling the Dishwasher.)
- Locate the hot water supply line and the power cable.
- Place the dishwasher so the power cable is in the center channel of the dishwasher base. To prevent the electrical cable from being pinched when you push the dishwasher into place, use duct tape or cable ties to secure the electrical cable to the channel.



- Pull the drain hose through the hole in the sink cabinet side wall. Keep it free of kinks.
- Make sure the hot water supply line is not twisted, and then connect the hot water supply line to the elbow joint.
- Slide the dishwasher carefully into the installation space. If possible, gently pull any excess lengths of water supply line, drain hose, or power cable back as you move the dishwasher. Get a second or third person to help you do this if necessary.



WARNING

DO NOT place the dishwasher on the water supply line, drain hose, or power cable. Make sure none of the lines get folded or twisted during installation.

WARNING

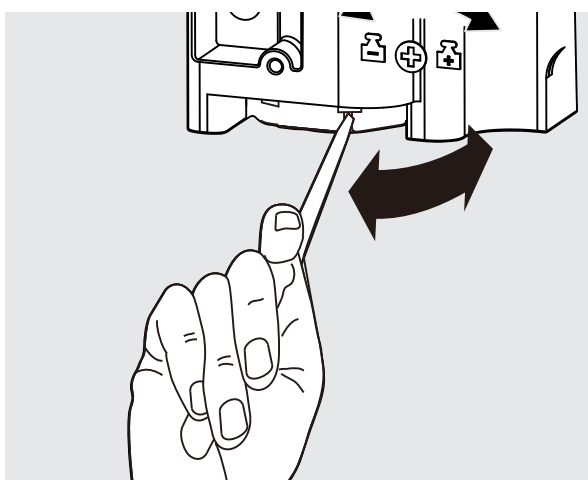
DO NOT place hands under the dishwasher when moving. Always hold under the tub NOT the bottom of the unit. Keep clear of sharp edges.

7 Leveling the Dishwasher

IMPORTANT

Dishwasher must be level for proper dish rack operation and wash performance.

- Open the door and hold level against the top of the tub to check if it is level side to side. Adjust the front legs until level.
- Remove the lower basket and place the level in the basket channel to check if it is level front to back. Adjust the rear legs until level.
- Open the door and check if the door hits the tub of the dishwasher. Adjust front leveling legs to align the door to the tub.



NOTE

Turn leveling leg clockwise (left) to lower the leg and counter clockwise (right) to raise the leg.

8 Securing the Dishwasher

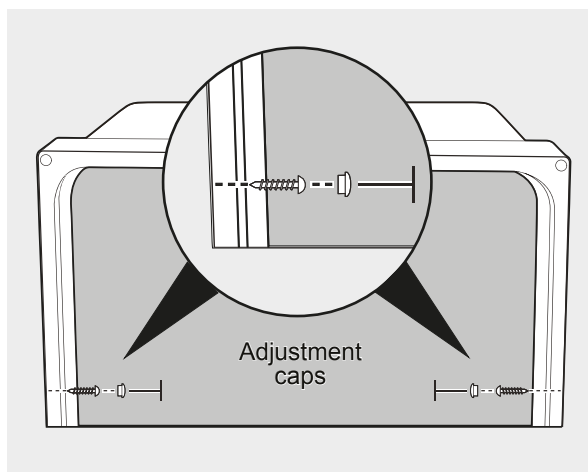
You must fix the dishwasher to the countertop or cabinet side walls for additional stability and safety.

If securing to the countertop (wood or other material that will not be damaged by drilling), follow the instructions below.

- Put a large towel into the bottom of the dishwasher to prevent wood shavings or a dropped screw from falling into the dishwasher.
- Verify that the installation brackets are firmly attached to the top of the unit using screws ST3.5*9 provided with the unit.
- Carefully drill screw holes into the underside of the counter top by passing the drill bit up through the screw holes in each installation bracket, making sure the diameter of the hole is smaller than the diameter of the screw.
- Insert screws ST4*14 up through the brackets, and then tighten to secure the dishwasher to the countertop.

If securing to the side cabinets (the countertop is made of granite, marble, or any other material that can be damaged by drilling), follow the instructions below.

- Put a large towel into the bottom of the dishwasher to prevent wood shavings or a dropped screw from falling into the dishwasher.
- Remove the adjustment caps with the tip of a screwdriver. The caps are just inside the tub near the middle of the tub on both sides.



- Drill a hole into the sides of the kitchen cabinet on both sides by carefully passing a drill bit through the screw holes exposed by the removal of the spacer caps, and then drilling into the side of the cabinet. Make sure the hole you drill is smaller than the diameter of the screw and that the drill bit does not strike the sides of the spacer cap holes.
- Verify that the installation brackets are firmly attached to the side of the unit.
- Insert screws ST4*14 into the holes, and then tighten to secure the dishwasher to the cabinet.

IMPORTANT

Make sure the tub is not distorted by pressure from the screws. If the tub is distorted, loosen the screws a little.

- Replace the tub adjustment caps.

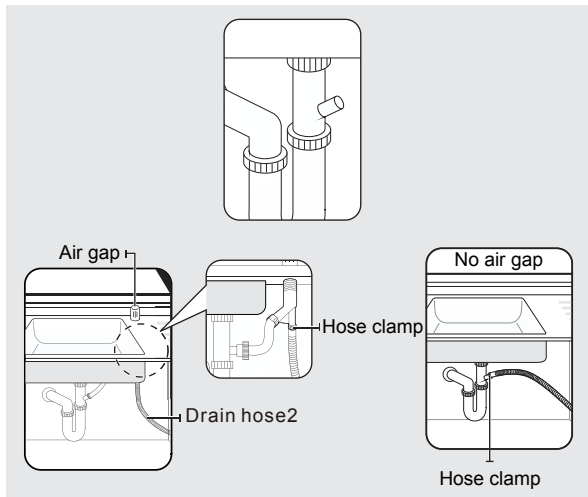
NOTE

- The screws or tub spacer cap may fall into the dishwasher while you are working with the door open. Cover the interior of the dishwasher with a towel to prevent any screws from falling into the dishwasher. If any foreign items such as a screw get into the dishwasher, it may cause noise, an abnormal operation, damage, or a malfunction.
- Use a magnetic screwdriver to help prevent screws from falling into the dishwasher.
- If a foreign item such as a screw gets into the dishwasher and you are unable to remove it, the dishwasher needs to be disassembled. Contact a qualified service technician for this.

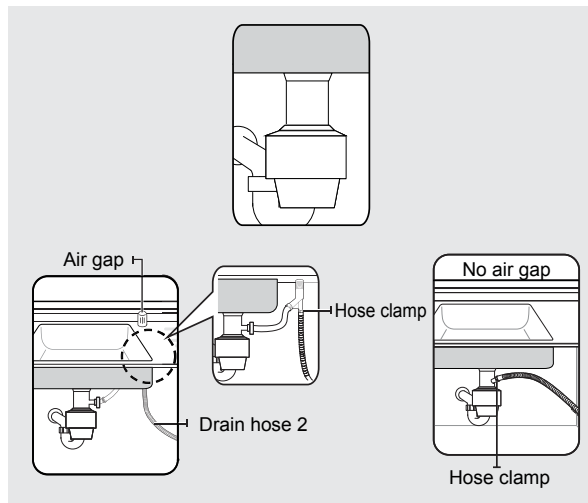
9 Connecting the Drain Hose

- Check the parts on the sink to which the drain hose will be connected.
- There are several ways to insert the drain hose into the drain hose connector of the sink. You must connect the drain hose in accordance with the water pipe installation regulations in your region.

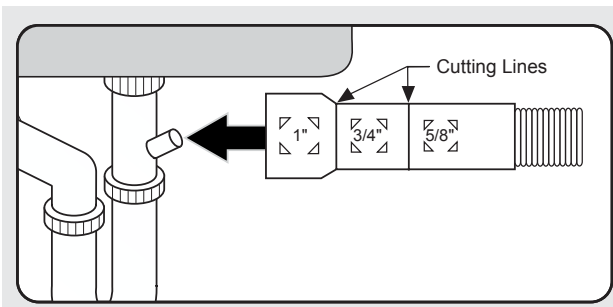
Connecting to drain without a garbage disposal unit with and without an air gap.



Connecting to drain with a garbage disposal unit with and without an air gap.



- The drain hose molded end will fit 5/8", 3/4", or 1" diameter connections on the air gap, waster tee, or disposer. Cut on the marked line as required for your installation.



IMPORTANT

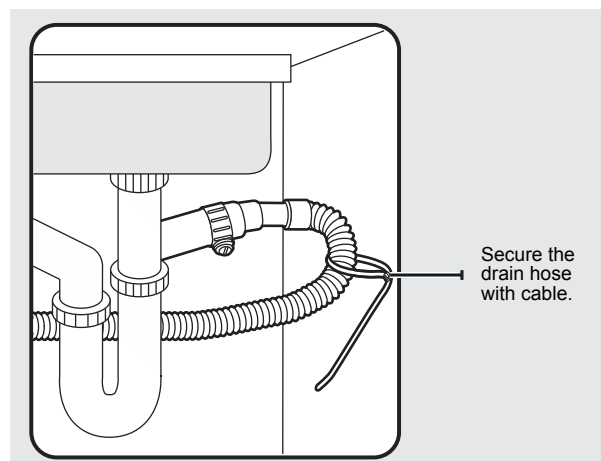
DO NOT cut corrugated portion of line.

- Slide a hose clamp over the end of the drain hose. Attach the drain hose to the sink connector, slide the hose clamp to the end of the hose, and then tighten the hose clamp.

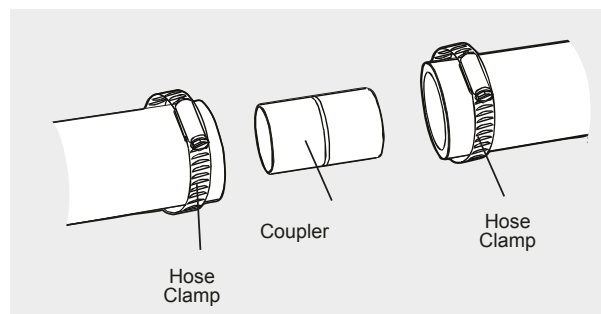
NOTE

You must use a hose clamp. Failure to do so may cause water leakage.

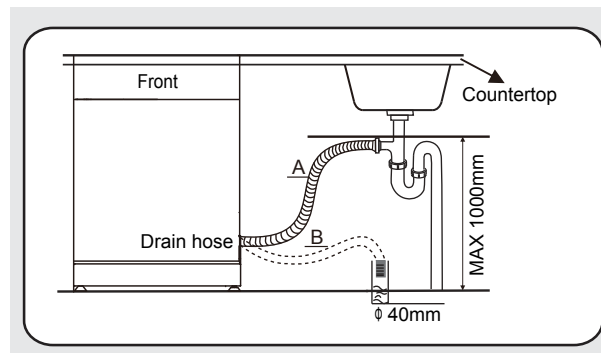
- Secure the drain hose to the sink wall using cable ties or other fastening material.



- If a longer drain hose is required, add up to 42" of length for a total of 10 ft. to the factory installed hose. Use 5/8" or 7/8" inside diameter hose and a coupler to connect the two hose ends. Secure the connection with hose clamps.
- Secure the drain hose to the air gap, waste tee, or disposer with clamps.



- If there is no air gap, make sure to hang the middle of the drain hose well above the sink cabinet base to prevent backflow.



NOTE

The top of the drain hose must be less than 39.3" (1000mm).

- When drilling a hole for the drain hose on the cabinet wall, take caution not to damage the drain hose by sharp edges of the hole.
 - On wooden walls, use sand paper to soften the edges.
 - On metal walls, use insulation tape or duct tape to cover the sharp edges around the hole.

IMPORTANT

- Take caution not the damage the drain hose when installing the dishwasher on the floor, wall, or cabinet.
- Do not cut the wrinkled area of the drain hose to fit the size. When arranging the drain hose, take caution not to contact on sharp edges of the cabinet or under-sink.

WARNING

- Be careful when cutting off the end of the drain hose as there is a risk of injury. Clean around the sink's drain connection so that it does not damage the hose. Check for any foreign items in the drain hose and remove them.
- When arranging the drain hose, make sure the drain hose is not cut, torn, or broken by any sharp edges of the floor, the product itself, or the cabinet. A damaged drain hose causes a leak.

NOTE

To prevent leaks or drainage problems, make sure the drain hose is not damaged, kinked, or twisted.

10 Wiring Connections

WARNING

ELECTRIC SHOCK HAZARD



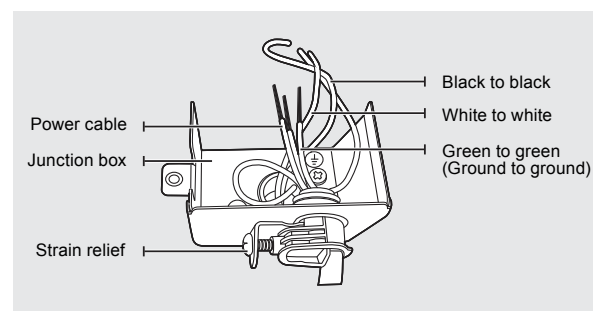
To avoid electrical shock, do not work on an energized circuit. Doing so could result in serious injury or death. Only qualified electricians should perform electrical work. Do not attempt any work on the dishwasher electric supply circuit until you are certain the circuit is de-energized.

WARNING

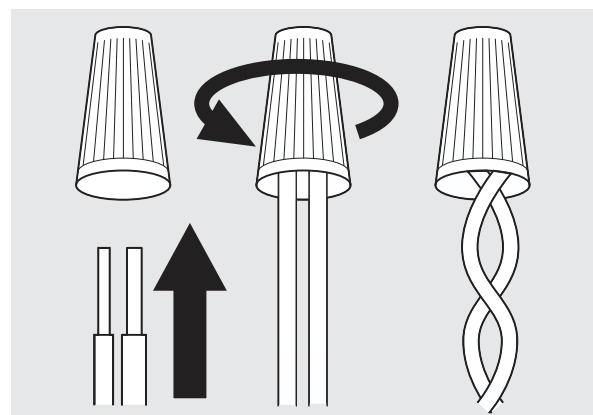
FIRE HAZARD

To avoid fire hazard, make sure electrical work is properly installed. Only qualified electricians should perform electrical work.

- Before connecting the power cable to the dishwasher, make sure the circuit breaker is OFF.
- In the junction box located at the front bottom right of the dishwasher, find the three power wires from the dishwasher including the grounding line.
- Pass the power cable through the strain relief, and then into the junction box.
- Connect the BLACK wire of the dishwasher to the BLACK wire of the power cable by inserting both into a wire nut and then rotating the wire connector.



- Connect the WHITE wire to the WHITE wire and the GREEN to the GREEN in the same manner.



- Recheck each wire to ensure it is connected correctly and securely.

WARNING

Each colored wire should be connected to the corresponding wire of the same color. WHITE should be connected to WHITE, BLACK to BLACK, and GREEN to GREEN.

- Replace the junction box cover on the dishwasher.

11 Completing the Installation

- Open the door and remove all foam, paper packaging, and unnecessary parts.
- Turn the circuit breaker ON.
- Open the water supply valve to supply water to the dishwasher.
- Turn on the dishwasher, and then select and run a cycle.

WARNING

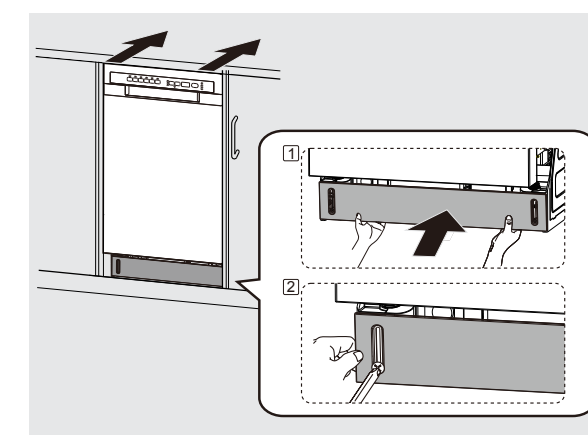
Make sure to check for water leakage on both ends of the water supply line and drain hose connector.

IMPORTANT

Check that the power turns on correctly and that there is NO water leakage while the dishwasher is operating.

- If no errors occur while it is operating, turn OFF the dishwasher, and then install the kickplate.
- If an error has occurred, turn off the dishwasher, close the water supply valve, and refer to the user manual or contact local service center.

- Insert the black adjustable toeplate under the kickplate and install onto the unit. Make sure the top kickplate wiper edge is located at the bottom of the kickplate and that the edge of the adjustable toeplate reaches to the floor. Secure with the two kickplate screws previously removed (ST3.9*13).

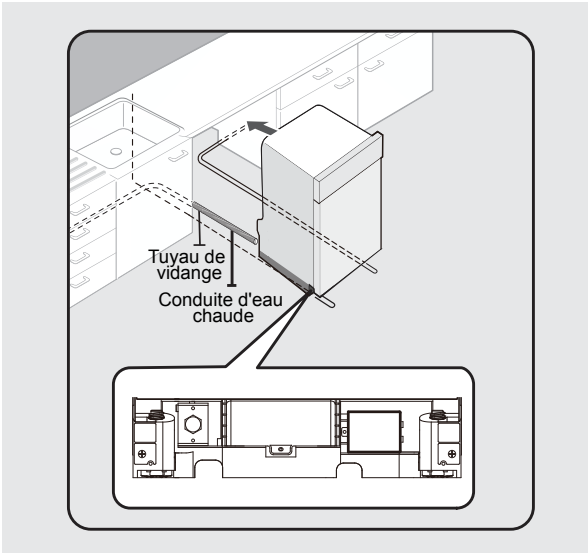


12 Specifications

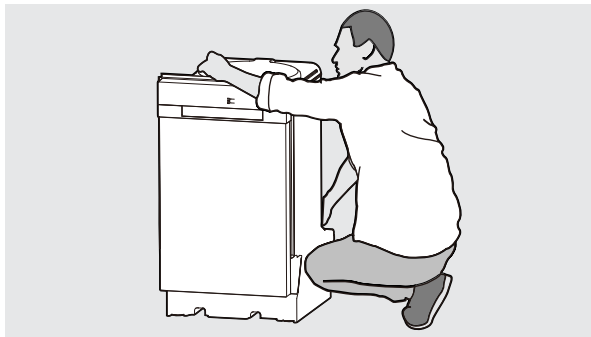
Product Specifications

Capacity	8 place settings
Dimensions	17.6 x 22.6 x 32.4 inches 450 x 575 x 825 mm (W x D x H)
Power Supply	120v, 60Hz
Rated Power Usage	wash motor 100W, heater 700W
Water feed pressure	20 psi-120 psi (0.14 MPa-0.82 MPa)

- Ajustez les quatre pieds de nivellement au bas du lave-vaisselle après avoir mesuré la hauteur de l'ouverture de l'armoire sous le comptoir jusqu'au plancher. (Voir l'étape 8 Mise de niveau du lave-vaisselle.)
- Localisez la conduite d'eau chaude et le câble d'alimentation.
- Placez le lave-vaisselle de façon à ce que le câble d'alimentation se trouve dans la coulisse centrale de la base du lave-vaisselle. Pour empêcher que le câble électrique se pince lorsque vous insérez le lave-vaisselle en place, utilisez du ruban adhésif ou des colliers de serrage pour fixer le câble électrique dans la coulisse.



- Tirez le tuyau de vidange par le trou de la paroi latérale de l'armoire de l'évier. Veillez à ce qu'il ne se plie pas.
- Assurez-vous que la conduite d'eau chaude n'est pas tordue, puis raccordez-la au joint en coude.
- Faites doucement glisser le lave-vaisselle dans l'espace prévu pour l'installation. Si possible, tirez délicatement vers l'arrière toute longueur excessive de la conduite d'eau, du tuyau de vidange et du câble d'alimentation pendant que vous déplacez le lave-vaisselle. Faites-vous aider au besoin par une ou deux autres personnes.



AVERTISSEMENT

NE PLACEZ PAS le lave-vaisselle sur la conduite d'eau, le tuyau de vidange ou le câble d'alimentation. Assurez-vous qu'aucune des conduites n'est pliée ou tordue durant l'installation.

AVERTISSEMENT

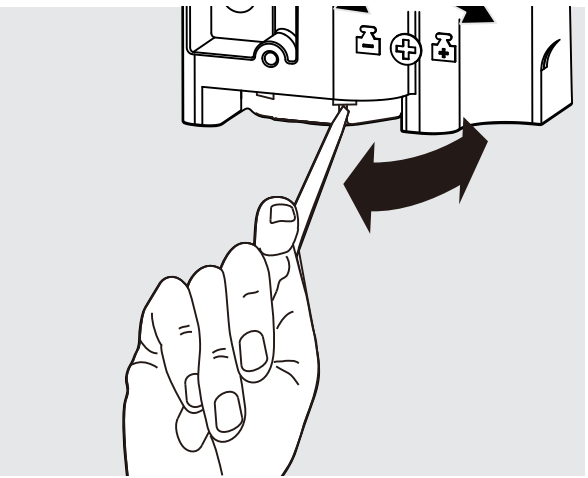
NE PLACEZ PAS vos mains sous le lave-vaisselle lorsque vous le déplacez. Tenez-le toujours sous la cuve ET NON au bas de l'appareil. Ne touchez pas aux bords acérés.

7 Mise de niveau du lave-vaisselle

IMPORTANT

Le lave-vaisselle doit être de niveau pour fonctionner correctement et pour le déplacement des plateaux à vaisselle.

- Ouvrez la porte et tenez le niveau contre le haut de la cuve pour voir si le lave-vaisselle est de niveau d'un côté à l'autre. Ajustez les pieds avant jusqu'à ce qu'ils soient de niveau.
- Retirez le panier du bas et placez le niveau dans la coulisse du panier pour voir si le lave-vaisselle est de niveau d'avant en arrière. Ajustez les pieds arrière jusqu'à ce qu'ils soient de niveau.
- Ouvrez la porte et vérifiez si elle rejoint la cuve du lave-vaisselle. Ajustez les pieds de nivellement avant pour aligner la porte avec la cuve.



REMARQUE

Tournez la patte de nivellement dans le sens des aiguilles d'une montre pour abaisser la patte et dans le sens contraire pour élever la patte.

8 Fixation du lave-vaisselle

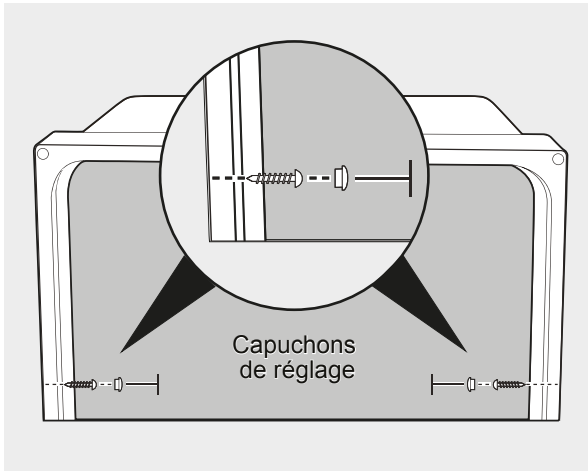
Vous devez fixer le lave-vaisselle au comptoir ou aux parois de l'armoire pour plus de stabilité et de sécurité.

Pour le fixer au comptoir (en bois ou fait d'un matériau qui ne sera pas endommagé par le perçage), suivez les instructions ci-dessous.

- Placez une grande serviette au fond du lave-vaisselle pour ne pas que des copeaux de bois ou des vis tombent dans le lave-vaisselle.
- Vérifiez que les supports de montage sont solidement fixés au dessus de l'appareil avec les vis ST3.5*9 fournies avec l'appareil.
- Percez délicatement les trous de vis dans le dessous du comptoir en faisant passer le foret dans les trous de vis de chaque support de montage et en vous assurant que le diamètre du trou est plus petit que celui de la vis.
- Insérez les vis ST4*14 dans les supports, puis serrez-les pour fixer le lave-vaisselle au comptoir

Pour fixer le lave-vaisselle aux parois de l'armoire de cuisine (si le comptoir est en granite, en marbre ou tout autre matériau pouvant être endommagé par le perçage), suivez les instructions ci-dessous.

- Placez une grande serviette au fond du lave-vaisselle pour ne pas que des copeaux de bois ou des vis tombent dans le lave-vaisselle.
- Retirez les capuchons des dispositifs de réglage avec la pointe d'un tournevis. Les capuchons se trouvent juste à l'intérieur de la cuve, près du milieu des deux côtés.



- Percez un trou dans les parois de l'armoire de cuisine des deux côtés en faisant délicatement passer le foret dans les trous de vis découverts par le retrait des capuchons d'entretoise et en perçant dans le côté de l'armoire. Assurez-vous que le trou que vous percez soit plus petit que le diamètre de la vis et que le foret de la perceuse ne heurte pas les côtés des trous des capuchons d'entretoise.
- Vérifiez que les supports de montage sont solidement fixés au côté de l'appareil.
- Insérez les vis ST4*14 dans les trous, puis serrez-les pour fixer le lave-vaisselle à l'armoire.

IMPORTANT

Assurez-vous que la cuve n'est pas déformée par la pression des vis. Si la cuve est déformée, desserrez un peu les vis.

- Remettez en place les capuchons de réglage de la cuve.

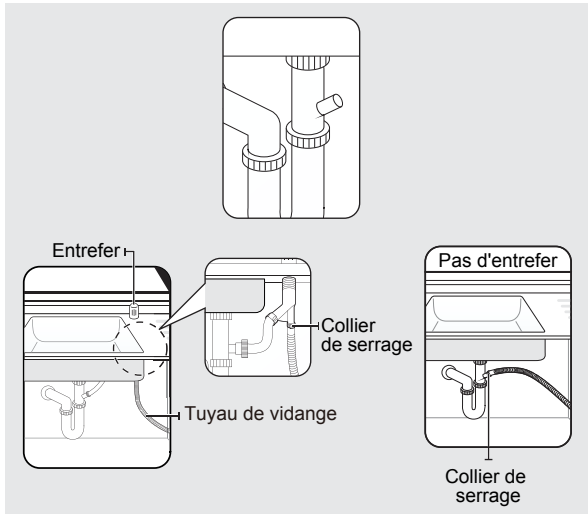
REMARQUE

- Une vis ou un capuchon d'entretoise de la cuve peut tomber dans le lave-vaisselle pendant que vous travaillez avec la porte ouverte. Couvrez l'intérieur du lave-vaisselle avec une serviette pour ne pas qu'une vis tombe dans le lave-vaisselle. Si un corps étranger tel qu'une vis tombe dans le lave-vaisselle, cela peut causer du bruit, un fonctionnement anormal, des dommages ou une défaillance.
- Utilisez un tournevis aimanté pour ne pas que les vis tombent dans le lave-vaisselle.
- Si un corps étranger comme une vis pénètre dans le lave-vaisselle et que vous n'arrivez pas à le retirer, le lave-vaisselle doit être démonté. Adressez-vous à un technicien d'entretien qualifié.

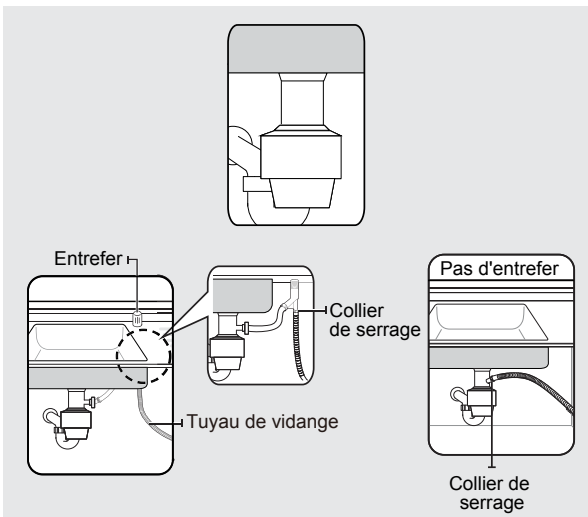
9 Raccordement du tuyau de vidange

- Vérifiez les pièces de l'évier auxquelles le tuyau de vidange sera raccordé.
- Il y a plusieurs façons d'insérer le tuyau de vidange dans le raccord du tuyau de vidange de l'évier. Le raccordement du tuyau de vidange doit se faire conformément aux règlements sur l'installation de tuyaux d'eau en vigueur dans votre région.

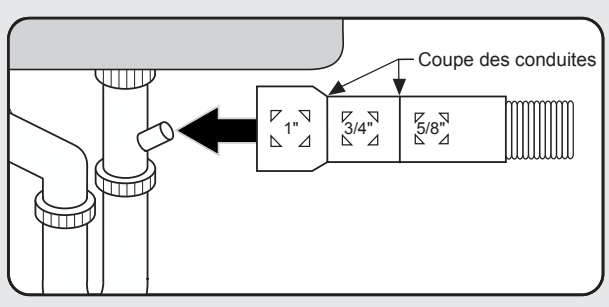
Raccord au drain sans broyeur à déchets avec et sans entrefer.



Raccord au drain avec un broyeur à déchets avec et sans entrefer.



- L'extrémité moulée du tuyau de vidange est compatible avec des raccords d'un diamètre de 5/8 po, 3/4 po ou 1 po sur l'entrefer, le raccord en T ou le broyeur. Coupez sur la ligne marquée selon les besoins de votre installation.



IMPORTANT

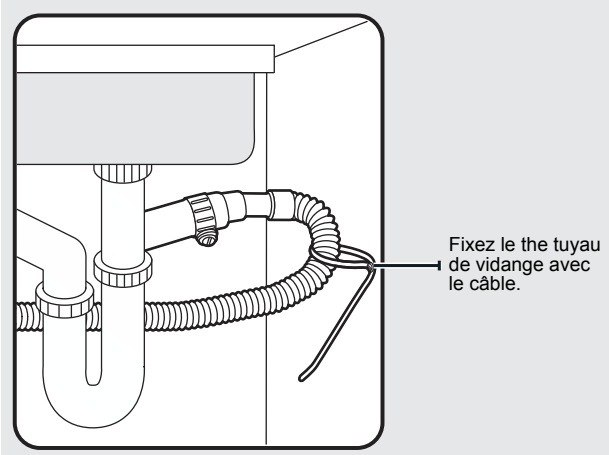
NE COUPEZ PAS la partie ondulée de la conduite.

- Faites glisser un collier de boyau sur l'extrémité du tuyau de vidange. Fixez le tuyau de vidange dans le raccord de l'évier, faites glisser le collier de serrage jusqu'à l'extrémité du tuyau et serrez le collier.

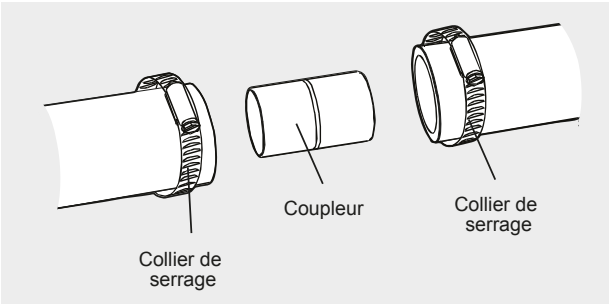
REMARQUE

Vous devez utiliser un collier de serrage. Le non-respect de cette consigne peut entraîner des fuites d'eau.

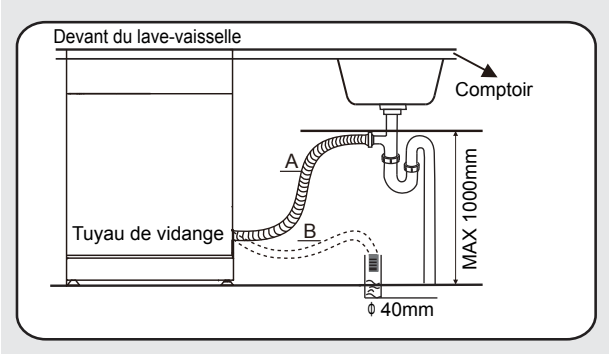
- Fixez le tuyau de vidange sur la paroi de l'évier à l'aide de serre-câbles ou d'autre matériel de serrage.



- Si un tuyau de vidange est requis, vous pouvez ajouter jusqu'à 107 cm (42 po) de longueur pour un total de 3 m (10 pi) au boyau installé en usine. Utilisez un tuyau d'un diamètre intérieur de 5/8 po ou de 7/8 po et un coupleur pour raccorder les deux extrémités du boyau. Fixez le raccord avec des colliers de serrage.
- Fixez le the tuyau de vidange à l'entrefer, au raccord en T ou au broyeur à l'aide de colliers de serrage.



- S'il n'y a pas d'entrefer, prenez soin de suspendre le milieu du tuyau de vidange bien au-dessus de la base de l'armoire de l'évier pour éviter tout roulement.



REMARQUE

Le haut du tuyau de vidange doit être inférieur à 1000 mm (39,3 po).

- Lorsque vous percez un trou pour le tuyau de vidange dans la paroi de l'armoire, veillez à ce que les bords tranchants du trou n'endommagent pas le tuyau.
 - Sur les parois en bois, utilisez du papier abrasif pour poncer et rendre les bords plus lisses.
 - Sur les parois métalliques, utilisez du ruban isolant ou du ruban adhésif pour conduits pour couvrir les bords tranchants sur le pourtour du trou.

IMPORTANT

- Veillez à ne pas endommager le tuyau de vidange lorsque vous installez le lave-vaisselle sur le plancher, le mur ou l'armoire.
- Ne coupez pas dans la partie plissée du tuyau de vidange pour adapter la taille. Lorsque vous disposez le tuyau de vidange, veillez à ce qu'il n'entre pas en contact avec les bords tranchants de l'armoire ou du dessous d'évier.

AVERTISSEMENT

- Faites attention lorsque vous coupez l'extrémité du tuyau de vidange, car il y a des risques de blessures. Nettoyez le pourtour du raccord du drain de l'évier pour qu'il n'endommage pas le tuyau. Vérifiez s'il y a des corps étrangers dans le tuyau de vidange et retirez-les le cas échéant.
- Lorsque vous disposez le tuyau de vidange, assurez-vous que le tuyau de vidange n'est pas coupé, déchiré ou brisé par les bords tranchants du plancher, par l'appareil lui-même ou par l'armoire. Un tuyau de vidange endommagé entraîne des fuites.

REMARQUE

Pour éviter les fuites ou les problèmes d'évacuation, assurez-vous que le tuyau de vidange n'est pas endommagé, plié ou tordu.

10 Connexions de câblage

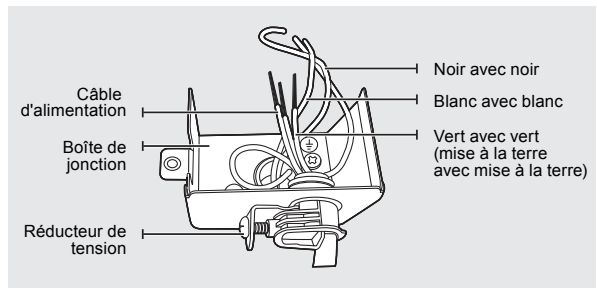
AVERTISSEMENT

RISQUE DE CHOC ÉLECTRIQUE
Pour éviter les chocs électriques, ne travaillez jamais sur un circuit sous tension. Vous risqueriez des blessures graves ou la mort. Assurez-vous de faire effectuer les travaux d'électricité par un électricien qualifié. Ne tentez jamais de travailler sur le circuit d'alimentation électrique du lave-vaisselle tant que vous n'êtes pas certain que le circuit est hors tension.

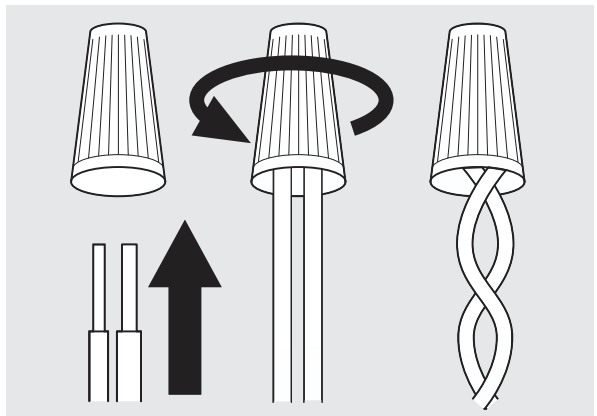
AVERTISSEMENT

RISQUE D'INCENDIE
Pour éviter tout risque d'incendie, assurez-vous que les travaux d'électricité sont correctement effectués. Assurez-vous de faire effectuer les travaux d'électricité par un électricien qualifié.

- Avant de raccorder le câble d'alimentation au lave-vaisselle, assurez-vous que le disjoncteur est COUPÉ.
- Dans la boîte de jonction située à l'avant du lave-vaisselle, en bas à droite, localisez les trois fils d'alimentation du lave-vaisselle, y compris le fil de mise à la terre.
- Faites passer le câble d'alimentation à travers le réducteur de tension jusque dans la boîte de jonction.



- Branchez le fil NOIR du lave-vaisselle au fil NOIR du câble d'alimentation en insérant les deux fils dans un capuchon de connexion et en tournant le connecteur.



- Raccordez le fil BLANC au fil BLANC et le fil VERT au fil VERT de la même manière.

AVERTISSEMENT

Chaque fil de couleur doit être connecté au fil correspondant de la même couleur. Le BLANC doit être connecté au BLANC, le NOIR au NOIR et le VERT au VERT.

- Vérifiez de nouveau chaque fil pour vous assurer qu'il est connecté correctement et solidement.
- Replacez le couvercle de la boîte de jonction sur le lave-vaisselle.

11 Terminer l'installation

- Ouvrez la porte et retirez la mousse, l'emballage en papier et les pièces non nécessaires.
- Réactivez le disjoncteur.
- Ouvrez la valve d'alimentation en eau qui amène l'eau au lave-vaisselle.
- Mettez le lave-vaisselle en marche et sélectionnez un cycle pour vérifier le fonctionnement du lave-vaisselle.

AVERTISSEMENT

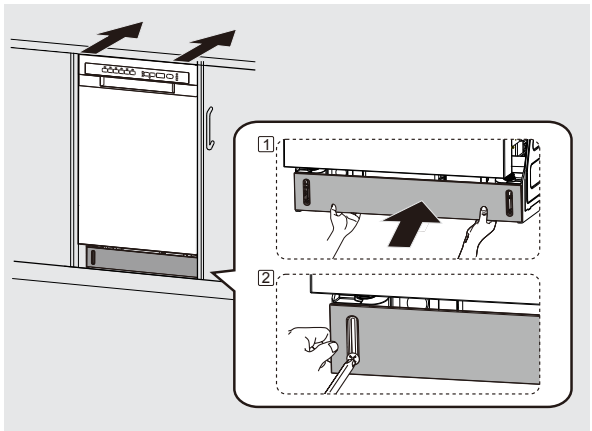
Assurez-vous qu'il n'y a pas de fuites d'eau aux deux extrémités de la conduite d'eau et au raccord du tuyau de vidange.

IMPORTANT

Vérifiez que la mise en marche se fait correctement et qu'il n'y a AUCUNE fuite d'eau lorsque le lave-vaisselle est en fonction.

- Si aucune erreur ne se produit pendant que le lave-vaisselle fonctionne, éteignez-le et installez la plaque de protection.
- Si une erreur s'est produite, éteignez le lave-vaisselle, fermez la valve d'alimentation en eau et consultez le guide d'utilisation ou communiquez avec votre centre de service.

- Insérez la plaque de protection réglable noire sous la pièce de fixation et installez-la sur l'appareil. Assurez-vous que le bord de lame de la pièce de fixation se trouve au fond de la pièce de fixation et que le bord la plaque de protection réglable se rend jusqu'au plancher. Fixez la pièce de fixation avec les deux vis précédemment retirés (ST3.9*13).



12 Spécifications

Spécifications du produit

Capacité du produit	8 couverts
Dimensions	17,6 x 22,6 x 32,4 pouces 450 x 575 x 825 mm (W x D x H)
Alimentation électrique	120v, 60Hz
Puissance nominale utilisation	moteur de lavage 100W, radiateur 700W
Pression d'alimentation en eau	20 psi–120 psi (0,14 MPa–0,82 MPa)