



PRODUCT GUIDE

 **elica**  
aria nuova





AIR IS PRECIOUS.  
THIS EVERYDAY AWARENESS, HAS DRIVEN ELICA'S DESIGN  
SENSE, SUPPORTED BY THE MOST ADVANCED TECHNOLOGY  
IN THE FIELD. ALL ELICA SERIES ARE ABLE TO MEET THE  
NEEDS RELATED TO THE DIFFERENT WAYS OF LIVING AND  
COOKING ALL AROUND THE WORLD.

# WHY ELICA

The history of our brand began back in 1970 in Fabriano, Italy, where **our passion for design and quality** was born. An unmistakable style along with the meticulous studies of the air and its qualities, are our distinctive traits.

From the very beginning we have been inspired by the principles of Italian Design, combining the most innovative technologies in the creation of our range-hoods.

Over the years we have revolutionized the image of the hoods and the Elica brand can be found in homes all over the world. Our evolution has taken us into the world of cooking, providing unprecedented industry first solutions before anyone else that **never cease to amaze**. Our long history of cutting edge design and technology, has led to numerous patents, which have helped drive the future of appliances. At our global design center and the Elica Propulsion Laboratory, experts study air, moisture and heat, where they are researching and developing the products of tomorrow.

We are the market leader, by producing 20.7 million pieces ranging from hoods to motors every year. Elica is represented worldwide in five continents with manufacturing plants and commercial offices in Italy, Poland, Mexico, India, China and Russia.

**These are some of the Awards where our products have been recognized:**



# INDEX

## COOKTOPS WITH ASPIRATION SYSTEM



NIKOLATESLA SWITCH  
Page 7

## RISERVA SERIES



EBS52SS1  
Page 9



EBS51SS1  
Page 10



EWS52SS1  
Page 11



EBF52SS1  
Page 12

## ISLAND HOODS



EASY  
Page 14



SEASHELL  
Page 14



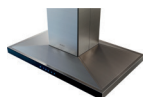
HAIKU IS & HAIKU IS COLOR  
Page 16



HAIKU IS  
Page 17



CINGOLI  
Page 23



SALICE  
Page 24



MAGGIORE  
Page 25



STONEY IS  
Page 28



LEONE IS  
Page 33



VAVANO IS  
Page 34

# INDEX

## WALL-MOUNT HOODS



HAIKU & HAIKU COLOR  
Page 15



HAIKU  
Page 17



CATANIA 36 - 48  
Page 20



ORISTANO 36 - 48  
Page 21



COMO  
Page 23



LUGANO  
Page 24



MEZZANO  
Page 25



VARNA BLACK  
Page 26



VARNA  
Page 26



FOGLIA  
Page 27



PILATO  
Page 27



STONEY  
Page 28



LEONE  
Page 33



VAVANO  
Page 34



CALABRIA  
Page 35



TOBLINO 24  
Page 41



TOBLINO 30 - 36  
Page 41



POTENZA  
Page 42



VOLTERRA 24  
Page 45



VOLTERRA 30 - 36  
Page 45

## UNDERCABINET HOODS



ARIA  
Page 29



MODENA  
Page 29



BELLAGIO  
Page 31



CERVINIA  
Page 35



ALLASIO  
Page 40



NEMI  
Page 40



Fusaro  
Page 42



TT  
Page 44



SORA  
Page 46



GUBBIO  
Page 46

# INDEX

## OUTDOOR HOOD



CAPRI  
Page 38

## INSERT HOODS



PALERMO  
Page 30



AREZZO  
Page 36



TRENTO  
Page 36



ASTI 22 - 28  
Page 43



ASTI 30  
Page 44

## CEILING MOUNT HOODS



ILLUSION  
Page 18



HILIGHT  
Page 18

## DOWNDRAFT HOODS



RISE  
Page 30

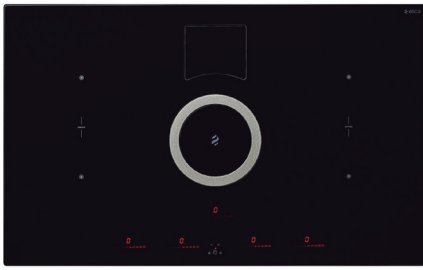
\*The product images shown are for illustration purposes only and may not be an exact representation of the product.





# AIR COOKING

**NIKOLATESLA** is the first Elica exclusive Aspiration Cooktop, which combines functionality of two technologies: Induction + Ventilation System into one single appliance. No other cooking technology is faster than the induction elements, Nikolatesla Series makes a reality to boil 1L of water in less than 60 seconds. Elica's Air Cooking line offers all the benefits of the induction wonders: Safety, cleanliness, energy saving, PLUS the aspiration system of a powerful hood. Save time and space, uncover this elegant hi-tech design.



# NIKOLATESLA SWITCH

## INDUCTION COOKTOP

<b>Model Numbers</b>	ENS436BL
<b>Wattage</b>	440 W
<b>Frequency</b>	60 Hz
<b>Voltage</b>	208-240 V
<b>Cooking Zones</b>	4 zones of 7.1" x 7.9"
<b>Bridge Zones</b>	2
<b>Heating Level</b>	9 levels + booster

## ASPIRATION SYSTEM

<b>Controls</b>	Slider touch control 3 speed + booster ventilation
<b>Blower performance</b>	400 CFM (4 speed)
<b>Noise (Sones)</b>	5.9 sones
<b>Duct Transition</b>	3 1/4" x 10" Round
<b>Filters</b>	6 layer dishwasher-safe anodized aluminum mesh
<b>Recirculating Kit</b>	3 - Ceramic Carbon Filters

# AIR COOKING

<b>Size</b>	36 1/16" W x 20 1/4" D x 8 1/4" H
<b>Type Finish</b>	Black glass
<b>Installation Type</b>	Ducted or recirculating self rimming or flush mounted



AIRMATIC



STOP&GO



BRIDGE ZONES



POT DETECTOR



TEMPERATURE MANAGER



TOUCH CONTROL



reddot design award winner





# RISERVA SERIES

**Fresh drinks as an alluring lifestyle.**

Life is best when you improvise, but when it comes to your favorite beverages and wines it is better to be prepared and have them always handy! Meet Elica's New Series of Undercabinet Beverage Centers and Wine Cellars, exquisitely designed to preserve them fresh to accompany the best moments of your life.



# EBS52SS1

## Beverage & Wine Center

### SINGLE DOOR DUAL ZONE

<b>Width</b>	24"
<b>Dimension</b>	23 13/32" W x 33 13/16" H x 23 5/8" D
<b>Weight</b>	128 lbs
<b>Installation Type</b>	Built-in and free standing
<b>Volume</b>	4.8 cu ft (135L)
<b>Sound Level</b>	39 dBA
<b>Door Finish</b>	304 stainless steel + tempered glass
<b>Hinge Design</b>	Concealed
<b>Lighting</b>	3 level white LED
<b>Controls</b>	Capacitive touch display with white numbers

### COOLING ZONE 1 - BEVERAGES

<b>Total Capacity</b>	72 cans (12 oz cans)
<b>Temperature Range</b>	34 to 50 °F
<b>Shelving</b>	2 adjustable slide-out Tempered glass shelves

### COOLING ZONE 2 - WINES

<b>Total Capacity</b>	14 bottles of wine (25 oz)
<b>Temperature Range</b>	40 to 64 °F
<b>Shelving</b>	1 full extension rack of beechwood with metal front trim

# RISERVA

<b>Door Handle</b>	Tubular
<b>Door glass</b>	Tinted dual pane, Low-e-Argon-Filled
<b>Reversible door</b>	Yes

## ELECTRICAL

<b>Min. circuit required</b>	15 A
<b>AC Power</b>	110-120V / 60 HZ
<b>Amperage</b>	0.95 A
<b>Plug Type</b>	B
<b>PRO Handle kit</b>	KIT0175505



<b>OTHERS</b>	Anti damping system Sabbath mode Beverage shelving made of tempered glass Premium beechwood wine racks Double panel glass door, UV coated 1 carbon filter
---------------	--



EPIC TECHNOLOGY



QUIET OPERATION



ECO-MODE



DOOR OPEN ALARM



CONCEALED HINGE



HIGH EFFICIENCY CARBON FILTERS



# EBS51SS1

## Beverage Center

### SINGLE DOOR SINGLE ZONE

<b>Width</b>	24"
<b>Dimension</b>	23 13/32" W x 33 13/16" H x 23 5/8" D
<b>Weight</b>	128 lbs
<b>Installation Type</b>	Built-in and free standing
<b>Volume</b>	4.8 cu ft (135L)
<b>Sound Level</b>	39 dBA
<b>Door Finish</b>	304 stainless steel + tempered glass
<b>Hinge Design</b>	Concealed
<b>Lighting</b>	3 level white LED
<b>Controls</b>	Capacitive touch display with white numbers

## COOLING ZONE 1 - BEVERAGES

<b>Total Capacity</b>	>120 cans (12 oz cans)
<b>Temperature Range</b>	34 to 65 °F
<b>Shelving</b>	3 Adjustable slide-out tempered glass shelves with metal front trim (without rollers)

# RISERVA

<b>Door Handle</b>	Tubular
<b>Door glass</b>	Tinted dual pane, Low-e-Argon-Filled
<b>Reversible door</b>	Yes

## ELECTRICAL

<b>Compressor brand</b>	Embraco
<b>Min. circuit required</b>	15 A
<b>AC Power</b>	110-120V / 60 HZ
<b>Amperage</b>	0.95 A
<b>Plug Type</b>	B
<b>PRO Handle kit</b>	KIT0175505



<b>OTHERS</b>	Anti damping system Sabbath mode Beverage shelving made of tempered glass Premium beechwood wine racks Double panel glass door, UV coated
---------------	---





# EWS52SS1

## Wine Cellar

### SINGLE DOOR DUAL ZONE

**Width** 24"

**Dimension** 23 13/32" W x 33 13/16" H x 23 5/8" D

**Weight** 128 lbs

**Installation Type** Built-in and free standing

**Volume** 4.8 cu ft (135L)

**Sound Level** 39 dBA

**Door Finish** 304 stainless steel + tempered glass

**Hinge Design** Concealed

**Lighting** 3 level white LED

**Controls** Capacitive touch display with white numbers

## COOLING ZONE 1 - WHITE WINE

**Total Capacity** 16 bottles of wine (25 oz)

**Temperature Range** 40 to 50 °F

**Shelving** 2 full extension racks of beechwood with metal front trim

## COOLING ZONE 2 - RED WINE

**Total Capacity** 36 bottles of wine (25 oz)

**Temperature Range** 50 to 64 °F

**Shelving** 3 full extension rack of beechwood with metal front trim

# RISERVA

**Door Handle** Tubular

**Door glass** Tinted dual pane, Low-e-Argon-Filled

**Reversible door** Yes

## ELECTRICAL

**Compressor brand** Embraco

**Min. circuit required** 15 A

**AC Power** 110-120V / 60 HZ

**Amperage** 0.95 A

**Plug Type** B

**PRO Handle kit** KIT0175505



**OTHERS** Anti damping system  
Sabbath mode  
Beverage shelving made of tempered glass  
Premium beechwood wine racks  
Double panel glass door, UV coated



EPIC TECHNOLOGY



QUIET OPERATION



ECO-MODE



DOOR OPEN ALARM



CONCEALED HINGE



HIGH EFFICIENCY CARBON FILTERS



# EBFS52SS1

## Beverage & Wine Center

### FRENCH DOOR DUAL ZONE

<b>Width</b>	24"
<b>Dimension</b>	23 13/32" W x 34 13/16" H x 22 13/32" D
<b>Weight</b>	117 lbs
<b>Installation Type</b>	Built-in and free standing
<b>Volume</b>	4.8 cu ft (135L)
<b>Sound Level</b>	39 dBA
<b>Door Finish</b>	304 stainless steel + tempered glass
<b>Hinge Design</b>	Concealed
<b>Lighting</b>	3 level white LED
<b>Controls</b>	Capacitive touch display with white numbers

### COOLING ZONE 1 - WHITE WINE

<b>Total Capacity</b>	> 60 cans (12 oz)
<b>Temperature Range</b>	34 to 68 °F
<b>Shelving</b>	3 adjustable slide-out tempered glass shelves with metal front trim

### COOLING ZONE 2 - WINES

<b>Total Capacity</b>	21 bottles of wine (25 oz)
<b>Temperature Range</b>	34 to 68 °F
<b>Shelving</b>	6 pieces beechwood shelves with metal front trim

# RISERVA

<b>Door Handle</b>	Tubular
<b>Door glass</b>	Tinted dual pane, Low-e-Argon-Filled
<b>Reversible door</b>	No

## ELECTRICAL

<b>Compressor brand</b>	Embraco
<b>Min. circuit required</b>	15 A
<b>AC Power</b>	110-120V / 60 HZ
<b>Amperage</b>	0.95 A
<b>Plug Type</b>	B
<b>PRO Handle kit</b>	KIT0175505 (2 kits needed for french door)



<b>OTHERS</b>	Anti damping system Sabbath mode Beverage shelving made of tempered glass Premium beechwood wine racks Double panel glass door, UV coated
---------------	---





# ICONIC

**Iconic** line hoods are uniquely Italian, with a focus on design that makes a statement in any home, providing captivating beauty, complemented by innovative materials and technology that promotes curiosity, emotion and conversation.





# EASY

ISLAND

<b>Model Numbers</b>	EES320SS, EES320WT	
<b>Width</b>	20"	
<b>Depth</b>	20"	
<b>Color / Material</b>	Stainless steel / White	
<b>Blower Performance</b>	355 CFM (3-speed + boost)	
<b>Controls</b>	Electronic push control with perimetral light	
<b>Lighting</b>	3 LED Lights	
<b>Filter</b>	Aluminium mesh filter + Perimeter aspiration	
<b>Installation Type</b>	Recirculating	
<b>Installation Height</b>	For ceiling heights 6'10" - 11'8"	
<b>Sones</b>	6.8 sones	
<b>OTHERS</b>	Timer	
<b>KIT</b>		
Optional wall mounting bracket	KIT0121394	
High ceiling extension	KIT01921	



# SEASHELL

ISLAND

<b>Model Numbers</b>	ESS432SS	
<b>Width</b>	31 1/2"	
<b>Depth</b>	31 1/2"	
<b>Color / Material</b>	Mirror look stainless steel	
<b>Blower Performance</b>	400 CFM (4-speed)	
<b>Controls</b>	Remote control	
<b>Lighting</b>	4 strip LED + LED disk	
<b>Filter</b>	Aluminium grease filter + regenerable charcoal filter	
<b>Installation Type</b>	Recirculating only	
<b>Installation Height</b>	For ceiling height 6'11" - 11'1"	
<b>Sones</b>	5.9 sones	
<b>KIT</b>		
High ceiling extension	KIT0067590	
White remote control	KIT0121468	
Black remote control	KIT0121469	





# HAIKU

WALL MOUNT

<b>Model Numbers</b>	EHK636SS, EHK624SS, EHK648SS
<b>Width</b>	24", 36", 48"
<b>Depth</b>	12 3/5" to 15"
<b>Color / Material</b>	Stainless steel
<b>Blower Performance</b>	600 CFM (3-speed + boost)
<b>Controls</b>	Sensitive touch control with backlight
<b>Lighting</b>	Strip LED
<b>Filter</b>	Sophisticated black iron grates + 6 layer mesh filter
<b>Installation Type</b>	Ducted or recirculating (kit sold separately)
<b>Installation Height</b>	For ceiling heights 7'3" - 9'10" (ducted) 7'3" - 10'1" (recirculating)
<b>Transition</b>	6" round
<b>Sones</b>	6.8 sones
<b>KIT</b>	
Recirculating kit	CFC0141725AUL



# HAIKU COLOR

WALL MOUNT

<b>Model Numbers</b>	EHK636WH, EHK636BL
<b>Width</b>	36"
<b>Depth</b>	12 3/5" to 15"
<b>Color / Material</b>	Black glass / White KRION®
<b>Blower Performance</b>	600 CFM (3-speed + boost)
<b>Controls</b>	Sensitive touch control with backlight
<b>Lighting</b>	Strip LED
<b>Filter</b>	Sophisticated black iron grates + 6 layer mesh filter
<b>Installation Type</b>	Ducted or recirculating (kit sold separately)
<b>Installation Height</b>	For ceiling heights 7'3" - 9'10" (ducted) 7'3" - 10'1" (recirculating)
<b>Transition</b>	6" round
<b>Sones</b>	6.8 sones
<b>KIT</b>	
Recirculating kit	CFC0141725AUL



\*White KRION® ecological material that has antibacterial properties and can be 100% recycled. Easy repair and cleaning due to the absence of porosity.



# HAIKU

## ISLAND

**Model Numbers** EHI648SS, EHI670SS

**Width** 48", 70"

**Depth** 13"

**Color / Material** Stainless steel

**Blower Performance** 600 CFM (3-speed + boost)

**Controls** Sensitive touch control with backlight

**Lighting** Strip LED

**Filter** Sophisticated black iron grates + 6 layer mesh filter

**Installation Type** Ducted or recirculating (kit sold separately)

**Installation Height** For ceiling heights 7'11" - 9'11" (ducted) 7'11" - 10'1" (recirculating)

**Transition** 6" round

**Sones** 6.8 sones

**KIT**  
Recirculating kit CFC0141725AUL



LONG LIFE FILTER



UNIQUE MATERIALS



REPLACE FILTER ALARM



TOTAL INTEGRATION



DEEP SILENCE



CLEAN FILTER ALARM



# HAIKU COLOR

## ISLAND

**Model Numbers** EHI648BL, EHI648WH

**Width** 48"

**Depth** 13"

**Color / Material** Black glass / White KRION®

**Blower Performance** 600 CFM

**Controls** Sensitive touch control with backlight

**Lighting** Strip LED

**Filter** Sophisticated black iron grates + 6 layer mesh filter

**Installation Type** Ducted or recirculating (kit sold separately)

**Installation Height** For ceiling heights 7'11" - 9'11" (ducted) 7'11" - 10'1" (recirculating)

**Transition** 6" round

**Sones** 6.8 sones

**KIT**  
Recirculating kit CFC0141725AUL



LONG LIFE FILTER



UNIQUE MATERIALS



REPLACE FILTER ALARM



TOTAL INTEGRATION



DEEP SILENCE



CLEAN FILTER ALARM



\*White KRION® ecological material that has antibacterial properties and can be 100% recycled. Easy repair and cleaning due to the absence of porosity.



# HAIKU

## WALL MOUNT

<b>Model Numbers</b>	EHK613SS
<b>Width</b>	13"
<b>Depth</b>	12 3/5" to 15"
<b>Color / Material</b>	Stainless steel
<b>Blower Performance</b>	600 CFM (3-speed + boost)
<b>Controls</b>	Sensitive touch control with backlight
<b>Lighting</b>	Strip LED
<b>Filter</b>	Sophisticated black iron grates + 6 layer mesh filter
<b>Installation Type</b>	Ducted or recirculating (kit sold separately)
<b>Installation Height</b>	For ceiling heights 7'3" - 9'10" (ducted) 7'3" - 10'1" (recirculating)
<b>Transition</b>	6" round
<b>Sones</b>	6.8 sones
<b>OTHERS</b>	Clean filter indicator

**KIT**  
Recirculating kit CFC0141725AUL



LONG LIFE FILTER



UNIQUE MATERIALS



REPLACE FILTER ALARM



TOTAL INTEGRATION



DEEP SILENCE



CLEAN FILTER ALARM



# HAIKU

## ISLAND

<b>Model Numbers</b>	EHI613SS
<b>Width</b>	13"
<b>Depth</b>	13"
<b>Color / Material</b>	Stainless steel
<b>Blower Performance</b>	600 CFM (3-speed + boost)
<b>Controls</b>	Sensitive touch control with backlight
<b>Lighting</b>	Strip LED
<b>Filter</b>	Sophisticated black iron grates + 6 layer mesh filter
<b>Installation Type</b>	Ducted or recirculating (kit sold separately)
<b>Installation Height</b>	For ceiling heights 7'11" - 9'11" (ducted) 7'11" - 10'1" (recirculating)
<b>Transition</b>	6" round
<b>Sones</b>	6.8 sones
<b>OTHERS</b>	Clean filter indicator

**KIT**  
Recirculating kit CFC0141725AUL



LONG LIFE FILTER



UNIQUE MATERIALS



REPLACE FILTER ALARM



TOTAL INTEGRATION



DEEP SILENCE



CLEAN FILTER ALARM





# ILLUSION

CEILING

**Model Numbers** EIL640WH, EIL640DW

**Width** 40"

**Depth** 19 17/25"

**Color / Material** Metal white with white frame / naked panel + stainless steel frame

**Blower Performance** 600 CFM (3-speed + boost)

**Controls** Remote control

**Lighting** Strip LED light with dimmable + tunable lighting

**Filter** Aluminum mesh filter + perimetral aspiration

**Installation Type** Ducted or recirculating (kit sold separately)

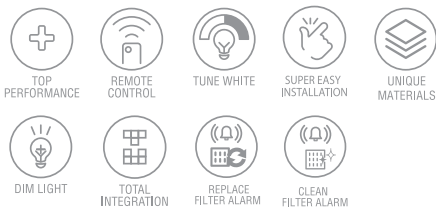
**Installation Height** For ceiling heights up to 10'0"

**Transition** 6" round (multi directional)

**Sones** 6.8 sones

**OTHERS** Long strip LED  
Timer  
Panel ready

**KIT**  
Recirculating kit KIT0167875



# HIGHLIGHT

CEILING

**Model Numbers** EHL640WH, EHL640SS

**Width** 40"

**Depth** 22 11/25"

**Color / Material** White glass with metal white frame / stainless steel

**Blower Performance** 600 CFM (3-speed + boost)

**Controls** Remote control

**Lighting** Strip LED light with dimmable + tunable lighting

**Filter** Aluminum mesh filter + perimetral aspiration

**Installation Type** Ducted or recirculating (kit sold separately)

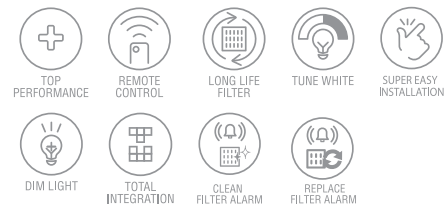
**Installation Height** For ceiling heights up to 10'0"

**Transition** 6" round (multi directional)

**Sones** 6.8 sones

**OTHERS** Long strip LED  
Timer  
White glass: gives the look as if it was all illuminated

**KIT**  
Recirculating kit KIT0167875





# DISEGNO

Elica's statement hoods, inspired by the traditional architecture, **Disegno** series combines performance and a bold design to complement the most exquisite kitchens. With seamless edges, mirrored stainless front rims and decorative banding & rivets deliver design to support those with a passion for food and gourmet cooking.



# CATANIA 36

WALL MOUNT

**Model Numbers** ECTX36SS

**Width** 36"

**Depth** 22"

**Color / Material** Stainless steel, front rim + decorative bands & rivets (stainless steel mirror look)

**Requires a Trento Insert** ETR634SS, ETR134S1

**Blower Type** 600 CFM / 1200 CFM

**Controls** Fully retractable rotating knobs with blue backlight

**Lighting** 2 LED lights

**Filter** Dishwasher safe professional stainless steel baffled filters

**Installation Type** Ducted installation only

**Transition** 10" round

**Sones** 7 sones / 8.5 sones

**KIT**  
 Duct cover extension 6" tall KIT0182785  
 Duct cover extension 18" tall KIT0182786  
 Compatible with Trento KITS



ELICA EASY MOUNTING



REAR OUTLET INSTALLATION



HUSH SYSTEM



SEAMLESS LOOK



GREASE COLLECTORS



PROFESSIONAL PERFORMANCE



HEAT GUARD



# CATANIA 48

WALL MOUNT

**Model Numbers** ECTX48SS

**Width** 48"

**Depth** 22"

**Color / Material** Stainless steel, front rim + decorative bands & rivets (stainless steel mirror look)

**Requires a Trento Insert** ETR146SS

**Blower Type** 1200 CFM

**Controls** Fully retractable rotating knobs with blue backlight

**Lighting** 2 LED lights

**Filter** Dishwasher safe professional stainless steel baffled filters

**Installation Type** Ducted installation only

**Transition** 10" round

**Sones** 8.5 sones

**KIT**  
 Duct cover extension 6" tall KIT0182787  
 Duct cover extension 18" tall KIT0182788  
 Compatible with Trento KITS



ELICA EASY MOUNTING



REAR OUTLET INSTALLATION



HUSH SYSTEM



SEAMLESS LOOK



GREASE COLLECTORS



PROFESSIONAL PERFORMANCE



HEAT GUARD



# ORISTANO 36

WALL MOUNT

**Model Numbers** EORX36SS

**Width** 36"

**Depth** 24"

**Color / Material** Stainless steel, front rim + decorative bands & rivets (stainless steel mirror look)

**Requires a Arezzo Insert** EAR634SS, EAR134S4

**Blower Type** 600 CFM / 1200 CFM

**Controls** Fully retractable rotating knobs with blue backlight

**Lighting** 2 LED lights

**Filter** Dishwasher safe professional stainless steel baffled filters

**Installation Type** Ducted installation only

**Transition** 10" round

**Sones** 7 sones / 8.5 sones

**KIT**  
 Duct cover extension 6" tall KIT0182781  
 Duct cover extension 18" tall KIT0182782  
 Compatible with Arezzo KITS



ELICA EASY MOUNTING



REAR OUTLET INSTALLATION



HUSH SYSTEM



SEAMLESS LOOK



GREASE COLLECTORS



PROFESSIONAL PERFORMANCE



HEAT GUARD



# ORISTANO 48

WALL MOUNT

**Model Numbers** EORX48SS

**Width** 48"

**Depth** 24"

**Color / Material** Stainless steel, front rim + decorative bands & rivets (stainless steel mirror look)

**Requires a Arezzo Insert** EAR140S4

**Blower Type** 1200 CFM

**Controls** Fully retractable rotating knobs with blue backlight

**Lighting** 4 LED lights

**Filter** Dishwasher safe professional stainless steel baffled filters

**Installation Type** Ducted installation only

**Transition** 10" round

**Sones** 8.5 sones

**KIT**  
 Duct cover extension 6" tall KIT0182783  
 Duct cover extension 18" tall KIT0182784  
 Compatible with Arezzo KITS



ELICA EASY MOUNTING



REAR OUTLET INSTALLATION



HUSH SYSTEM



SEAMLESS LOOK



GREASE COLLECTORS



PROFESSIONAL PERFORMANCE



HEAT GUARD





**Techne** Line brings everyday Italian living into your kitchen, featuring inspirational classic Italian designs, loaded with functional technologies that deliver convenience and high performance. Techne hoods come equipped with powerful blowers, hush sound suppression system, elegant glass touch controls and the possibility to set the desired illumination mood with long life LED lighting, where temperature and luminosity can be dimmed and adjusted.



# COMO

WALL MOUNT

<b>Model Numbers</b>	ECM630S3, ECM636S3
<b>Width</b>	30", 36"
<b>Depth</b>	19 11/16"
<b>Color / Material</b>	Stainless steel with black glass
<b>Blower Performance</b>	600 CFM (3-speed + boost) with CRS System to limit CFM
<b>Controls</b>	Capacitive touch (glass)
<b>Lighting</b>	2 LED premium dimmable lights
<b>Filter</b>	Dishwasher-safe, anodized stainless steel microhole filter
<b>Installation Type</b>	Ducted or recirculating (kit sold separately)
<b>Installation Height</b>	For ceiling heights 7'6" - 10'2" (ducted) 7'10" - 10'5" (recirculating)
<b>Transition</b>	6" round
<b>Sones</b>	6.8 sones
<b>KIT</b>	
Recirculating kit	KIT02766
Long chimney extension	KIT0100315
Charcoal filter replacement	KIT02667



# CINGOLI

ISLAND

<b>Model Numbers</b>	ECN636S3, ECN642S3
<b>Width</b>	36", 42"
<b>Depth</b>	25 1/4"
<b>Color / Material</b>	Stainless steel with black glass
<b>Blower Performance</b>	600 CFM (3-speed + boost) with CRS System to limit CFM
<b>Controls</b>	Capacitive touch (glass)
<b>Lighting</b>	2 LED premium dimmable lights
<b>Filter</b>	Dishwasher-safe, anodized stainless steel microhole filter
<b>Installation Type</b>	Ducted or recirculating (kit sold separately)
<b>Installation Height</b>	For ceiling heights 7'6" - 9'8" (ducted) 7'6" - 10'1" (recirculating)
<b>Transition</b>	6" round
<b>Sones</b>	6.8 sones
<b>KIT</b>	
Recirculating kit	KIT02665
Long chimney extension	KIT0100317
Charcoal filter replacement	KIT02667





# LUGANO

WALL MOUNT

**Model Numbers** ELG630S3, ELG636S3

**Width** 30", 36"

**Depth** 19 7/8"

**Color / Material** Stainless steel with black glass

**Blower Performance** 600 CFM (3-speed + boost) with CRS System to limit CFM

**Controls** Capacitive touch (glass)

**Lighting** 2 LED premium dimmable lights

**Filter** Aluminum mesh filter + Perimeter aspiration

**Installation Type** Ducted or recirculating (kit sold separately)

**Installation Height** For ceiling heights 7'0" - 9'2" (ducted) 7'5" - 9'6" (recirculating)

**Transition** 6" round

**Sones** 6.8 sones

**KIT**  
 Recirculating kit KIT0141925  
 Long chimney extension KIT02785, KIT01935  
 Charcoal filter replacement KIT0141918



# SALICE

ISLAND

**Model Numbers** ESL636S3, ESL642S3

**Width** 36", 42"

**Depth** 27 4/5"

**Color / Material** Stainless steel with black glass

**Blower Performance** 600 CFM (3-speed + boost) with CRS System to limit CFM

**Controls** Capacitive touch (glass)

**Lighting** 4 LED premium dimmable lights

**Filter** Aluminum mesh filter + Perimeter aspiration

**Installation Type** Ducted or recirculating (kit sold separately)

**Installation Height** For ceiling heights 7'9" - 9'11" (ducted) 7'9" - 10'4" (recirculating)

**Transition** 6" round

**Sones** 6.8 sones

**KIT**  
 Recirculating kit KIT0141924  
 Long chimney extension KIT0100317  
 Charcoal filter replacement KIT0141918

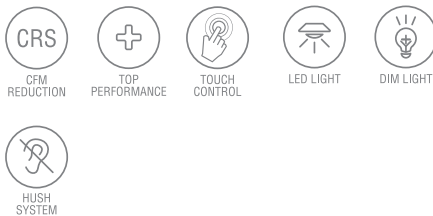




# MEZZANO

WALL MOUNT

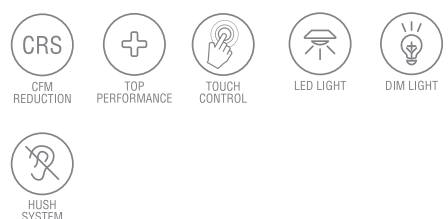
<b>Model Numbers</b>	EMZ630S3, EMZ636S3
<b>Width</b>	30", 36"
<b>Depth</b>	19 11/16"
<b>Color / Material</b>	Stainless steel with black glass
<b>Blower Performance</b>	600 CFM (3-speed + boost) with CRS System to limit CFM
<b>Controls</b>	Capacitive touch (glass)
<b>Lighting</b>	2 LED premium dimmable lights
<b>Filter</b>	Dishwasher-safe stainless steel microhole filters
<b>Installation Type</b>	Ducted or recirculating (kit sold separately)
<b>Installation Height</b>	For ceiling heights 7'6" - 10'2" (ducted) 7'10" - 10'6" (recirculating)
<b>Transition</b>	6" round
<b>Sones</b>	6.8 sones
<b>KIT</b>	
Recirculating kit	KIT0102875
Long chimney extension	KIT02785



# MAGGIORE

ISLAND

<b>Model Numbers</b>	EMG636S1, EMG642S1
<b>Width</b>	36", 42"
<b>Depth</b>	27 1/8"
<b>Color / Material</b>	Stainless steel with black glass
<b>Blower Performance</b>	600 CFM (3-speed + boost) with CRS System to limit CFM
<b>Controls</b>	Capacitive touch (glass)
<b>Lighting</b>	4 LED premium dimmable lights
<b>Filter</b>	Dishwasher-safe stainless steel microhole filters
<b>Installation Type</b>	Ducted or recirculating (kit sold separately)
<b>Installation Height</b>	For ceiling heights 7'6" - 9'9" (ducted) 7'6" - 10'2" (recirculating)
<b>Transition</b>	6" round
<b>Sones</b>	6.8 sones
<b>KIT</b>	
Recirculating kit	KIT02665
Long chimney extension	KIT0100317
Charcoal filter replacement	KIT02667





# VARNA

WALL MOUNT

<b>Model Numbers</b>	EVR630S2, EVR636S2
<b>Width</b>	30", 36"
<b>Depth</b>	19 11/16"
<b>Color / Material</b>	Stainless steel with black glass
<b>Blower Performance</b>	600 CFM (3-speed + boost) with CRS System to limit CFM
<b>Controls</b>	Capacitive touch (glass)
<b>Lighting</b>	2 LED premium dimmable lights
<b>Filter</b>	Dishwasher-safe stainless steel microhole filters
<b>Installation Type</b>	Ducted or recirculating (kit sold separately)
<b>Installation Height</b>	For ceiling heights 7'5" - 9'1" (ducted) 7'5" - 9'6" (recirculating)
<b>Transition</b>	6" round
<b>Sones</b>	6.8 sones
<b>KIT</b>	
Recirculating kit	KIT02766
Long chimney extension	KIT02762



CFM REDUCTION



TOP PERFORMANCE



TOUCH CONTROL



LED LIGHT



DIM LIGHT



HUSH SYSTEM



# VARNA BLACK

WALL MOUNT

<b>Model Numbers</b>	EVR630BL, EVR63BL
<b>Width</b>	30", 36"
<b>Depth</b>	19 11/16"
<b>Color / Material</b>	Black stainless steel + Black glass
<b>Blower Performance</b>	600 CFM (3-speed + boost) with CRS System to limit CFM
<b>Controls</b>	Capacitive touch (glass)
<b>Lighting</b>	2 LED premium dimmable lights
<b>Filter</b>	Dishwasher-safe stainless steel microhole filters
<b>Installation Type</b>	Ducted or recirculating (kit sold separately)
<b>Installation Height</b>	For ceiling heights 7'5" - 9'1" (ducted) 7'5" - 9'6" (recirculating)
<b>Transition</b>	6" round
<b>Sones</b>	6.8 sones
<b>KIT</b>	
Recirculating kit	KIT02766
Long chimney extension	KIT0140998



CFM REDUCTION



TOP PERFORMANCE



TOUCH CONTROL



LED LIGHT



DIM LIGHT



HUSH SYSTEM



# FOGLIA

WALL MOUNT

**Model Numbers** EFG630S1, EFG636S1

**Width** 30", 36"

**Depth** 19 11/16"

**Color / Material** Stainless steel with black glass

**Blower Performance** 600 CFM (3-speed + boost) with CRS System to limit CFM

**Controls** Capacitive touch (glass)

**Lighting** 2 LED premium dimmable lights

**Filter** Dishwasher-safe stainless steel microhole filters

**Installation Type** Ducted or recirculating (kit sold separately)

**Installation Height** For ceiling heights 7'5" - 9'2" (ducted) 7'5" - 9'6" (recirculating)

**Transition** 6" round

**Sones** 6.8 sones

**KIT**  
 Recirculating kit KITO2766  
 Long chimney extension KITO2784



LED LIGHT



# PILATO

WALL MOUNT

**Model Numbers** EPL630S2, EPL636S2

**Width** 30", 36"

**Depth** 21 1/2"

**Color / Material** Stainless steel

**Blower Performance** 600 CFM (3-speed + boost) with CRS System to limit CFM

**Controls** Multi-function electronic with LCD display

**Lighting** 2 LED lights

**Filter** Dishwasher-safe stainless steel microhole filters

**Installation Type** Ducted or recirculating (kit sold separately)

**Installation Height** For ceiling heights 7'5" - 9'2" (ducted) 7'5" - 9'5" (recirculating)

**Transition** 6" round

**Sones** 6.8 sones

**KIT**  
 Recirculating kit KITO2766  
 Long chimney extension KITO2762





# STONEY

WALL MOUNT

**Model Numbers** EST630SS, EST636SS

**Width** 30", 36"

**Depth** 19 7/8"

**Color / Material** Stainless steel with black glass

**Blower Performance** 600 CFM (3-speed + boost) with CRS System to limit CFM

**Controls** Capacitive touch (glass)

**Lighting** 2 LED premium dimmable lights

**Filter** Aluminum mesh filter + Perimeter aspiration

**Installation Type** Ducted or recirculating (kit sold separately)

**Installation Height** For ceiling heights 7'0" - 9'2" (ducted) 7'5" - 9'6" (recirculating)

**Transition** 6" round

**Sones** 6.8 sones

**KIT**  
 Recirculating kit KIT0141925  
 Long chimney extension KIT02785, KIT01935



# STONEY IS

ISLAND

**Model Numbers** ESI636SS, ESI642SS

**Width** 36", 42"

**Depth** 27"

**Color / Material** Stainless steel with black glass

**Blower Performance** 600 CFM (3-speed + boost) with CRS System to limit CFM

**Controls** Capacitive touch (glass)

**Lighting** 4 LED premium dimmable lights

**Filter** Aluminum mesh filter + Perimeter aspiration

**Installation Type** Ducted or recirculating (kit sold separately)

**Installation Height** For ceiling heights 7'9" - 9'11" (ducted) 7'9" - 10'4" (recirculating)

**Transition** 6" round

**Sones** 6.8 sones

**KIT**  
 Recirculating kit KIT0141924  
 Long chimney extension KIT0100317





# ARIA

UNDERCABINET

<b>Model Numbers</b>	EAI430SS, EAI436SS
<b>Width</b>	30", 36"
<b>Depth</b>	20"
<b>Color / Material</b>	Stainless steel with black glass
<b>Blower Performance</b>	430 CFM (3-speed + boost) with CRS System to limit CFM
<b>Controls</b>	Capacitive touch (glass)
<b>Lighting</b>	2 LED premium dimmable lights
<b>Filter</b>	2 dishwasher-safe stainless steel baffle slot filters
<b>Installation Type</b>	Ducted or recirculating (kit sold separately)
<b>Transition</b>	3 1/4" x 10" top / Rear or 7" round top (sold separately)
<b>Sones</b>	6.1 sones
<b>KIT</b>	Recirculating kit <b>30"</b> : KIT02178, <b>36"</b> : KIT02179 Backdraft damper 7" round KIT02723



# MODENA

UNDERCABINET

<b>Model Numbers</b>	EMD530S3, EMD536S3
<b>Width</b>	30", 36"
<b>Depth</b>	19 5/8"
<b>Color / Material</b>	Stainless steel with black glass
<b>Blower Performance</b>	600 CFM (3-speed + boost) with CRS System to limit CFM
<b>Controls</b>	Capacitive touch (glass)
<b>Lighting</b>	2 LED premium dimmable lights
<b>Filter</b>	Dishwasher-safe stainless steel microhole filters
<b>Installation Type</b>	Ducted or recirculating (kit sold separately)
<b>Transition</b>	3 1/4" x 10" rectangular (rear outlet) and 6" round (top outlet)
<b>Sones</b>	6.8 sones
<b>KIT</b>	Recirculating kit KIT02667







# PALERMO

INSERT

<b>Model Numbers</b>	EPR628S1, EPR634SS
<b>Width</b>	28", 34"
<b>Depth</b>	10 3/4"
<b>Color / Material</b>	Stainless steel
<b>Blower Performance</b>	600 CFM (3-speed)
<b>Controls</b>	Stainless steel push button
<b>Lighting</b>	2 LED lights
<b>Filter</b>	Dishwasher-safe stainless steel baffle slot filters
<b>Installation Type</b>	Ducted or recirculating (kit sold separately)
<b>Transition</b>	6" round (top)
<b>Sones</b>	6.8 sones

<b>KIT</b>	
Recirculating kit	KIT02770
Hood liner 30"	KIT02773
Hood liner 36"	KIT02774
CFM Reduction kit	KIT02748



# RISE

DOWNDRAFT

<b>Model Numbers</b>	ERS630S1, ERS636S1
<b>Width</b>	30", 36"
<b>Depth</b>	12 1/2"
<b>Color / Material</b>	Stainless steel
<b>Blower Performance</b>	600 CFM (3-speed + boost)
<b>Controls</b>	External electronic rotating disk + LCD
<b>Filter</b>	Aluminum mesh filter + Perimeter aspiration
<b>Installation Type</b>	Ducted installation only
<b>Transition</b>	6" round (multi directional)
<b>Sones</b>	6.8 sones
<b>KIT</b>	
CFM Reduction kit	KIT02748





# BELLAGIO

## UNDERCABINET

**Model Numbers** EBL430S1, EBL436S1

**Width** 30", 36"

**Depth** 20"

**Color / Material** Stainless steel

**Blower Performance** 430 CFM (3-speed + boost) with CRS System to limit CFM

**Controls** Multi-function electronic with LCD display

**Lighting** 2 LED lights

**Filter** Dishwasher-safe, anodized aluminum mesh

**Installation Type** Ducted or recirculating (kit sold separately)

**Transition** 3 1/4" x 10" top / rear or 7" round top (sold separately)

**Sones** 6.1 sones

**KIT**  
Recirculating kit **30"**: KIT02178, **36"**: KIT02179  
Valve damper kit KIT02723



CFM  
REDUCTION



3X LAYER  
MESH FILTER



HEAT GUARD



LED LIGHT



# ELICA PRO

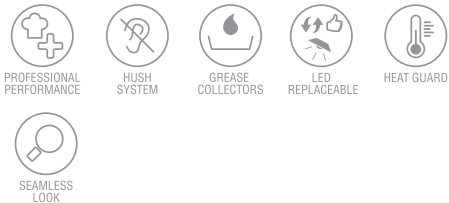
For those inspired by the culinary arts and gourmet cooking, **Elica Pro** line range hoods deliver professional style cooking, with bold design coupled with unparalleled durability, quality and high performance that top chefs desire.



# LEONE

WALL MOUNT

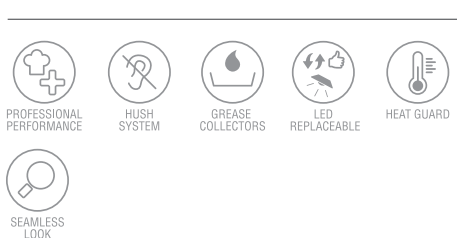
<b>Model Numbers</b>	ELN630S2, ELN636SS ELN136S2, ELN142S2, ELN148SS
<b>Width</b>	30", 36", 42", 48"
<b>Depth</b>	24"
<b>Color / Material</b>	Stainless steel
<b>Blower Performance</b>	30", 36": 600 CFM (4-speed) 36", 42", 48": 1200 CFM (4-speed)
<b>Controls</b>	Fully retractable rotating knobs with blue backlight
<b>Lighting</b>	2 LED lights
<b>Filter</b>	Dishwasher-safe, professional stainless steel baffle
<b>Installation Type</b>	Ducted installation only
<b>Installation Height</b>	For ceiling heights 7'6"-10'0" (over electric cooking), 8'0"-10'0" (over gas cooking)
<b>Transition</b>	8" round (top)
<b>Sones</b>	7 sonos / 8.5 sonos
<b>KIT</b>	
Long chimney extension	KIT02785
1200 CFM external blower	KIT0153054
1200 CFM in-line blower	KIT0154387



# LEONE IS

ISLAND

<b>Model Numbers</b>	ELI136S2, ELI142S2
<b>Width</b>	36", 42"
<b>Depth</b>	27"
<b>Color / Material</b>	Stainless steel
<b>Blower Performance</b>	1200 CFM (4-speed)
<b>Controls</b>	Fully retractable rotating knobs with blue backlight
<b>Lighting</b>	4 LED lights
<b>Filter</b>	Dishwasher-safe, professional stainless steel baffle
<b>Installation Type</b>	Ducted installation only
<b>Installation Height</b>	For ceiling heights 7'9" - 9'10" (over electric cooking) 8'3" - 9'10" (over gas cooking)
<b>Transition</b>	8" round (top)
<b>Sones</b>	8.5 sonos
<b>KIT</b>	
Long chimney extension	KIT0100317
1200 CFM external blower	KIT0153054
1200 CFM in-line blower	KIT0154387





# VAVANO

WALL MOUNT

**Model Numbers** EVV636S1, EVV648S1

**Width** 36", 48"

**Depth** 24"

**Color / Material** Stainless steel

**Blower Performance** 600 CFM (4-speed)

**Controls** Fully retractable rotating knobs with blue backlight

**Lighting** 2 LED lights

**Filter** Dishwasher-safe, professional stainless steel baffle

**Installation Type** Ducted installation only

**Installation Height** For ceiling heights 7'6" - 10'6"  
(over electric cooking)  
8'0" - 10'6" (over gas cooking)

**Transition** 8" round (top)

**Sones** 7 sones

**KIT**  
Long chimney extension KIT0146881  
Inline blower kit 1200 KIT0154387  
External blower kit 1200 KIT0153054



# VAVANO IS

ISLAND

**Model Numbers** EVI642S1, EVI648S1

**Width** 42", 48"

**Depth** 24"

**Color / Material** Stainless steel

**Blower Performance** 600 CFM (4-speed)

**Controls** Fully retractable rotating knobs with blue backlight

**Lighting** 4 LED lights

**Filter** Dishwasher-safe, professional stainless steel baffle

**Installation Type** Ducted installation only

**Installation Height** For ceiling heights 7'6" - 10'1"  
(over electric cooking)  
8'0" - 10'1" (over gas cooking)

**Transition** 8" round (top)

**Sones** 7 sones

**KIT**  
Long chimney extension KIT0145610  
Inline blower kit 1200 KIT0154387  
External blower kit 1200 KIT0153054





# CALABRIA

## WALL MOUNT

<b>Model Numbers</b>	ECL630S4, ECL636SS, ECL136S4, ECL142S4, ECL148S4
<b>Width</b>	30", 36", 42", 48"
<b>Depth</b>	25"
<b>Color / Material</b>	Stainless steel
<b>Blower Performance</b>	30", 36": 600 CFM (4-speed) 36", 42", 48": 1200 CFM (4-speed)
<b>Controls</b>	Fully retractable rotating knobs with blue backlight
<b>Lighting</b>	30", 36", 42": 2 LED lights 48": 4 LED lights
<b>Filter</b>	Dishwasher-safe, professional stainless steel baffle
<b>Installation Type</b>	Ducted installation only
<b>Transition</b>	10" round (top)
<b>Sones</b>	7 sones / 8.5 sones
<b>OTHERS</b>	Stackable ducts

**KIT**

Long chimney extension 6"	<b>30"</b> : KIT02159, <b>36"</b> : KIT02158, <b>42"</b> : KIT02622, <b>48"</b> : KIT02164
Long chimney extension 12"	<b>30"</b> : KIT02160, <b>36"</b> : KIT02161, <b>42"</b> : KIT02623, <b>48"</b> : KIT02165
1200 CFM external blower	KIT0153054
1200 CFM in-line blower	KIT0154387
Heat lamp w/2 75W bulbs kit	<b>30"</b> : KIT0155106, <b>36"</b> : KIT0155107, <b>42"</b> : KIT0155110, <b>48"</b> : KIT0155111
Stainless back splash	<b>30"</b> : KIT0142864, <b>36"</b> : KIT0142867, <b>42"</b> : KIT0142868, <b>48"</b> : KIT0142870



# CERVINIA

## UNDERCABINET

<b>Model Numbers</b>	ECV630S3, ECV636S3
<b>Width</b>	30", 36"
<b>Depth</b>	23"
<b>Color / Material</b>	Stainless steel
<b>Blower Performance</b>	600 CFM (4-speed)
<b>Controls</b>	Fully retractable rotating knobs with blue backlight
<b>Lighting</b>	2 LED lights
<b>Filter</b>	Dishwasher-safe, professional stainless steel baffle
<b>Installation Type</b>	Ducted installation only
<b>Transition</b>	3 1/4 X 10" (top and rear)
<b>Sones</b>	7 sones
<b>OTHERS</b>	Stackable ducts

**KIT**

Long chimney extension 6"	<b>30"</b> : KIT02159 <b>36"</b> : KIT02158
Long chimney extension 12"	<b>30"</b> : KIT02160 <b>36"</b> : KIT02161
Stainless back splash	<b>30"</b> : KIT0142864 <b>36"</b> : KIT0142867



SEAMLESS  
LOCK



# AREZZO

INSERT

<b>Model Numbers</b>	EAR628S4, EAR634SS EAR134S4, EAR140S4, EAR146S4
<b>Width</b>	28", 34", 40", 46"
<b>Depth</b>	22"
<b>Color / Material</b>	Stainless steel
<b>Blower Performance</b>	28", 34": 600 CFM (4-speed) 34", 40", 46": 1200 CFM (4-speed)
<b>Controls</b>	Fully retractable rotating knobs with blue backlight
<b>Lighting</b>	28" 34": 2 LED lights 40", 46": 4 LED lights
<b>Filter</b>	Dishwasher-safe, professional stainless steel baffle
<b>Installation Type</b>	Ducted installation only
<b>Transition</b>	10" round (top)
<b>Sones</b>	7 sones / 8.5 sones

## KIT

1200 CFM external blower	KIT0153054
1200 CFM in-line blower	KIT0154387



SEAMLESS  
LOOK



# TRENTO

INSERT

<b>Model Numbers</b>	ETR634SS, ETRI34S1, ETRI46SS
<b>Width</b>	34", 46"
<b>Depth</b>	18"
<b>Color / Material</b>	Stainless steel
<b>Blower Performance</b>	34": 600 CFM (4-speed) 34", 46": 1200 CFM (4-speed)
<b>Controls</b>	Fully retractable rotating knobs with blue backlight
<b>Lighting</b>	2 LED lights
<b>Filter</b>	Dishwasher-safe, professional stainless steel baffle
<b>Installation Type</b>	Ducted installation only
<b>Transition</b>	10" round (top)
<b>Sones</b>	7 sones / 8.5 sones

## KIT

1200 CFM external blower	KIT0153054
1200 CFM in-line blower	KIT0154387



SEAMLESS  
LOOK



# OUTDOORS

Perfect BBQ are the results of a good combination between a grill and a powerful exterior hood. Our **Outdoor** line includes stainless steel grade 304 weather resistant materials, LED light and extra depth for better fume capturing, and it is even extendable with a spacer.





# CAPRI

## WALL MOUNT

<b>Model Numbers</b>	ECP136SS, ECP148SS
<b>Width</b>	36", 48"
<b>Depth</b>	32"
<b>Color / Material</b>	Corrosion resistant stainless steel
<b>Blower Performance</b>	Internal or external 1200 CFM (4-speed) sold separately
<b>Controls</b>	Fully retractable rotating knobs with blue backlight
<b>Lighting</b>	36": 2 LED lights, 48": 4 LED lights
<b>Filter</b>	Dishwasher-safe,, professional stainless steel angled baffle filters
<b>Installation Type</b>	Ducted installation only
<b>Transition</b>	10" round (top)
<b>Sones</b>	8.5 sones
<b>OTHERS</b>	Stackable duct cover

### KIT

External blower kit 1200 CFM 8" or 10" duct size compatible	KIT0153054
In line blower kit 1200 CFM 8" or 10" duct size compatible:	KIT0154387
1200 CFM internal blower	KIT0156655
Spacer kit 3" deep	<b>36"</b> : KIT0153304, <b>48"</b> : KIT0153305
Ductcover kit 6"	<b>36"</b> : KIT0156637, <b>48"</b> : KIT0156641
Ductcover kit 12"	<b>36"</b> : KIT0156645, <b>48"</b> : KIT0156649



PROFESSIONAL PERFORMANCE



GREASE COLLECTORS



LED REPLACEABLE



HEAT GUARD



SEAMLESS LOOK



# COMFORT

The **Comfort** line of range hoods feature highly popular Italian design equipped with a core set of features that delivers functionality, performance, easy installation system and overall a very high level of value.



# ALLASIO

## UNDERCABINET

**Model Numbers** EAL330S2 EAL336S2

**Width** 30", 36"

**Depth** 20"

**Color / Material** Stainless steel

**Blower Performance** 300 CFM (3-speed)

**Controls** Electronic touch controls w/color backlight

**Lighting** 2 LED lights

**Filter** Dishwasher-safe anodized aluminum mesh

**Installation Type** Ducted or recirculating (kit sold separately)

**Transition** 3 1/4" x 10" top / Rear or 7" round top (sold separately)

**Sones** 5.2 sones

**KIT**  
 Recirculating kit **30"**: KIT02178, **36"**: KIT02179  
 Non return valve **30", 36"**: KIT02723  
 Upgrade Filter Kit **30"**: GRI0131086A  
**36"**: GRI0131087A



3X LAYER MESH FILTER



LED LIGHT



CFM REDUCTION



# NEMI

## UNDERCABINET

**Model Numbers** ENM230S1, ENM236S1

**Width** 30", 36"

**Depth** 18 5/8"

**Color / Material** Stainless steel

**Blower Performance** 280 CFM (3-speed)

**Controls** Backlit electronic push button

**Lighting** 2 LED lights

**Filter** Dishwasher-safe anodized aluminum mesh

**Installation Type** Ducted or recirculating (kit sold separately)

**Transition** 3 1/4" x 10" top / Rear or 7" round top (sold separately)

**Sones** 4.9 sones

**KIT**  
 Optional recirculating kit KIT0140997  
 Non return valve 7" KIT02723  
 Duct transition 7" KIT02722



3X LAYER MESH FILTER



LED LIGHT



# TOBLINO 24

WALL MOUNT

<b>Model Numbers</b>	ETB424SS
<b>Width</b>	24"
<b>Depth</b>	19 5/8"
<b>Color / Material</b>	Stainless steel
<b>Blower Performance</b>	400 CFM (3-speed)
<b>Controls</b>	Backlit electronic push button
<b>Lighting</b>	2 LED lights
<b>Filter</b>	Dishwasher-safe anodized aluminum mesh
<b>Installation Type</b>	Ducted or recirculating (kit sold separately)
<b>Installation Height</b>	For ceiling heights 6'11" - 8'7" (ducted) 7'0" - 8'11" (recirculating)
<b>Transition</b>	6" round
<b>Sones</b>	5.9 sones
<b>KIT</b>	
Recirculating kit	KIT0102875
Long chimney extension	KIT02785, KIT01935
CFM reduction kit	KIT0175561
Upgrade filter kit	GF04YB



# TOBLINO 30-36

WALL MOUNT

<b>Model Numbers</b>	ETB430S3, ETB436S3
<b>Width</b>	30", 36"
<b>Depth</b>	19 5/8"
<b>Color / Material</b>	Stainless steel
<b>Blower Performance</b>	400 CFM (3-speed)
<b>Controls</b>	Electronic touch controls w/color backlight
<b>Lighting</b>	2 LED lights
<b>Filter</b>	Dishwasher-safe anodized aluminum mesh
<b>Installation Type</b>	Ducted or recirculating (kit sold separately)
<b>Installation Height</b>	For ceiling heights 6'11" - 8'7" (ducted) 7'0" - 8'11" (recirculating)
<b>Transition</b>	6" round
<b>Sones</b>	5.9 sones
<b>KIT</b>	
Recirculating kit	KIT0102875
Long chimney extension	KIT02785
Upgrade filter kit	GF04YB





# POTENZA

WALL MOUNT

<b>Model Numbers</b>	EPT430S3, EPT436S3
<b>Width</b>	30", 36"
<b>Depth</b>	19 5/8"
<b>Color / Material</b>	Stainless steel
<b>Blower Performance</b>	400 CFM
<b>Controls</b>	Electronic touch controls w/ color backlight
<b>Lighting</b>	2 LED lights
<b>Filter</b>	Dishwasher-safe anodized aluminum mesh
<b>Installation Type</b>	Ducted or recirculating (kit sold separately)
<b>Installation Height</b>	For ceiling heights 6'9"-8'8" (ducted), 7'0"-9'0"(recirculating)
<b>Transition</b>	6" round
<b>Sones</b>	5.9 sones
<b>KIT</b>	
Recirculating kit	KIT0102875
Long chimney extension	KIT0100315, KIT01609/1
Upgrade filter kit	GF04YB



# FUSARO

UNDERCABINET

<b>Model Numbers</b>	EFS130S1
<b>Width</b>	30"
<b>Depth</b>	18 5/8"
<b>Color / Material</b>	Stainless steel
<b>Blower Performance</b>	190 CFM (2-speed)
<b>Controls</b>	Rocker Switch
<b>Lighting</b>	Incandescent lamp (not included)
<b>Filter</b>	Dishwasher-safe aluminum mesh
<b>Installation Type</b>	Ducted or recirculating (kit sold separately)
<b>Transition</b>	3 1/4" x 10" top / rear or 7" round top (sold separately)
<b>Sones</b>	4.1 sones
<b>KIT</b>	
Duct transition kit	KIT02722
Back draft damper kit	KIT02723
Non return valve	KIT02724





## ASTI 22

INSERT

<b>Model Numbers</b>	EAS422SS
<b>Width</b>	22"
<b>Depth</b>	10 3/4"
<b>Color / Material</b>	Stainless steel
<b>Blower Performance</b>	400 CFM (3-speed)
<b>Controls</b>	Backlit electronic push button
<b>Lighting</b>	2 LED lights
<b>Filter</b>	Anodized aluminum mesh
<b>Installation Type</b>	Ducted or recirculating (kit sold separately)
<b>Transition</b>	6" round (top)
<b>Sones</b>	5.9 sones

<b>KIT</b>	
Recirculating kit	KIT02770
CFM reduction kit	KIT0175561



3X LAYER MESH FILTER



LED LIGHT



## ASTI 28

INSERT

<b>Model Numbers</b>	EAS428S2
<b>Width</b>	28"
<b>Depth</b>	10 3/4"
<b>Color / Material</b>	Stainless steel
<b>Blower Performance</b>	400 CFM (3-speed)
<b>Controls</b>	Electronic touch controls w/ color backlight
<b>Lighting</b>	2 LED lights
<b>Filter</b>	Anodized aluminum mesh
<b>Installation Type</b>	Ducted or recirculating (kit sold separately)
<b>Transition</b>	6" round (top)
<b>Sones</b>	5.9 sones

<b>KIT</b>	
Recirculating kit	KIT02770
30" hood liner for EAS428S1	KIT02773
36" hood liner for EAS428S1	KIT02774



3X LAYER MESH FILTER



LED LIGHT



CFM REDUCTION



# ASTI 30

INSERT

<b>Model Numbers</b>	EAS430SS
<b>Width</b>	30"
<b>Depth</b>	10 3/4"
<b>Color / Material</b>	Stainless steel
<b>Blower Performance</b>	400 CFM (3-speed)
<b>Controls</b>	Mechanical push button
<b>Lighting</b>	2 LED lights
<b>Filter</b>	Stainless steel mesh
<b>Installation Type</b>	Ducted or recirculating (kit sold separately)
<b>Transition</b>	6" round (top)
<b>Sones</b>	5.9 sones

<b>KIT</b>	
Recirculating kit	KIT02770
CFM reduction kit	KIT0175561



# TT

UNDERCABINET

<b>Model Numbers</b>	ETT424S1, ETT430SS, ETT436SS
<b>Width</b>	24", 30", 36"
<b>Depth</b>	11" - 17"
<b>Color / Material</b>	Stainless steel
<b>Blower Performance</b>	400 CFM (3-speed)
<b>Controls</b>	Hidden electronic touch controls
<b>Lighting</b>	2 LED lights
<b>Filter</b>	Diswasher-safe anodized aluminum mesh
<b>Installation Type</b>	Ducted or recirculating (kit sold separately)
<b>Transition</b>	6" round (top)
<b>Sones</b>	5.9 sones

<b>KIT</b>	
Recirculating kit	CFC0038668
CFM reduction kit	KIT02748
6" round plastic deflector	DF01EA





## VOLTERRA 24

WALL MOUNT

<b>Model Numbers</b>	EVL424SS
<b>Width</b>	24"
<b>Depth</b>	19 5/8"
<b>Color / Material</b>	Stainless steel
<b>Blower Performance</b>	400 CFM (3-speed)
<b>Controls</b>	Backlit electronic push button
<b>Lighting</b>	2 LED lights
<b>Filter</b>	Dishwasher-safe anodized aluminum mesh
<b>Installation Type</b>	Ducted or recirculating (kit sold separately)
<b>Installation Height</b>	For ceiling heights 7'5" - 9'1" (ducted) 7'5" - 9'6" (recirculating)
<b>Transition</b>	6" round (top)
<b>Sones</b>	5.9 sones
<b>KIT</b>	
Recirculating kit	KIT02766
Long chimney extension kit	KIT02762
CFM reduction kit	KIT0175561
Upgrade filter kit	GF04YB



## VOLTERRA 30-36

WALL MOUNT

<b>Model Numbers</b>	EVL430S2, EVL436S2
<b>Width</b>	30", 36"
<b>Depth</b>	19 5/8"
<b>Color / Material</b>	Stainless steel
<b>Blower Performance</b>	400 CFM (3-speed) with CRS system to limit CFM
<b>Controls</b>	Electronic touch controls w/color backlight
<b>Lighting</b>	2 LED lights
<b>Filter</b>	Dishwasher-safe anodized aluminum mesh
<b>Installation Type</b>	Ducted or recirculating (kit sold separately)
<b>Installation Height</b>	For ceiling heights 7'5" - 9'1" (ducted) 7'5" - 9'6" (recirculating)
<b>Transition</b>	6" round (top)
<b>Sones</b>	5.9 sones
<b>KIT</b>	
Recirculating kit	KIT02766
Long chimney extension kit	KIT02762
Upgrade filter kit	GF04YB







## SORA

UNDERCABINET

<b>Model Numbers</b>	ESR430S1, ESR436S1
<b>Width</b>	30", 36"
<b>Depth</b>	23"
<b>Color / Material</b>	Stainless steel
<b>Blower Performance</b>	400 CFM (2-speed)
<b>Controls</b>	Rocker switches
<b>Lighting</b>	2 LED lights
<b>Filter</b>	Dishwasher-safe stainless steel baffle slot
<b>Installation Type</b>	Ducted or recirculating (kit sold separately)
<b>Transition</b>	3 1/4" x 10" top or rear
<b>Sones</b>	5.9 sones

<b>KIT</b>	
Recirculating kit	KIT02770
CFM reduction kit	KIT0175561



SEMI BAFFLE  
FILTER



LED LIGHT



## GUBBIO

UNDERCABINET

<b>Model Numbers</b>	EGB224SS
<b>Width</b>	24"
<b>Depth</b>	18 7/8"
<b>Color / Material</b>	Stainless steel
<b>Blower Performance</b>	250 CFM (3-speed)
<b>Controls</b>	Mechanical Slider
<b>Lighting</b>	2 LED lights
<b>Filter</b>	Dishwasher-safe anodized aluminum mesh
<b>Installation Type</b>	Ducted or recirculating (kit sold separately)
<b>Transition</b>	3 1/4" x 10" top or rear
<b>Sones</b>	4.6 sones

<b>KIT</b>	
Optional recirculating kit	KIT0140997
Non return valve 7"	KIT02723
Duct transition 7"	KIT02722



LED LIGHT

# ELICA'S EXCLUSIVE PLUS FEATURES



## COOKTOP

Switch off all the cooking zones at once.



## COOKTOP

Auto aspiration system automatically adjusts to the number and power of cooking zones used.



## COOKTOP

Homogeneous cooking: Cooktop surface adapts to the type of pot being used.



## COOKTOP

Turns off cooktop when zone is not being used and turns on when pot is placed.



## COOKTOP

The cooktop can be used with three programs (42, 72 or 92 degrees) to always ensure a perfect cooking.



## COOKTOP

Once the Airmatic function is activated, the product's intelligent sensor system detects the quantity - but above all the quality - of the fumes produced by the type of cooking and sets the most suitable aspiration power.



CFM Reduction System: enables user to reduce directly the maximum blower CFM, to meet local code requirements.



Very high performances for models with aspiration capacity between 600 and 1200 CFM's. The ideal complement of PRO ranges.



Exclusive sound deadening technology that effectively reduces sound levels.



Offers installation flexibility that will accommodate most construction requirements, plus provided options related to ventilation power and sound generation.



An exclusive sound deadening technology that utilizes a patented filter design, which substantially eliminates air turbulence and ultimately reduce sound levels.



ADA compliant Remote Control provides added convenience to the user, as well as full function access for those with limited mobility.



Multi function electronic touch control behind sleek black glass and illuminate soft blue when activated.



The technology draws air through narrowed channelled around a face plate, which increases suction, without increasing blower speed or energy consumption.



Installation of the hood is easier, through an adjustment of the appliance alignment between the cabinets.



Professional grade stainless steel baffle filters designed for high airflow cooking trap volumes of grease which is collected in trays for easy removal and cleaning.

# ELICA'S EXCLUSIVE PLUS FEATURES



TOP PERFORMANCE

High fume capturing capacity with an average aspiration range of 600 CFM's with low noise levels (1.2-1.7 sones at working speed).



UNIQUE MATERIALS

Products designed with special materials and finishes with great aesthetic impact but also with practical and durable characteristics, perfect for the kitchen.



LONG LIFE FILTER

Air filter that can be regenerated and keeps characteristics for up to 3 years, avoiding unnecessary replacements and waste. It has level of efficiency of around 60%.



SEAMLESS LOOK

Heavy gauge stainless steel "seamless" construction that delivers superior quality and Italian craftsmanship.



3X LAYER MESH FILTER

Aluminum mesh filters are step above competition, featuring triple layered, anodized aluminum that is woven into a highly dense mesh.



CLEAN FILTER ALARM

When activated, your hood will emit a "beep" signal to let you know when is time to clean your filters. For some models, an intermittent light will remain active until cleaning filter action is completed. See instructions manual to activate feature.



TUNE WHITE

Choose preferred shade of white to create the right atmosphere. The Kelvin degrees regulation starts from a very warm tone up to a cold color.



REPLACE FILTER ALARM

When activated, your hood will emit a "beep" signal let you know when is time to replace the carbon filters. See instructions manual to activate feature.



LED REPLACEABLE

Enables typical homeowners to replace LED lamps in seconds.



ELICA EASY MOUNTING

Elica's patented Easy Mounting System enables hood installation to be done in 6 easy steps, without ladders, without the added cost of purchasing a specialized duct transition, and without the added cost of purchasing a duct cover to hide ducting connection points.



LED LIGHT

Expected lifetime of over 20,000 hours, represents the most remarkable advantage of LED light bulbs.



REAR OUTLET INSTALLATION

The Elica Easy Mounting System makes ducting out through the rear wall behind the hood canopy possible for this style hood.



WIRELESS CONNECTIVITY

Wireless connection ensures constant communication between the induction cooktop and the hood.



ECO-MODE

## REFRIGERATION

Sustainable and environmentally friendly: Eco-Mode will maintain optimum interior temperature, while saving energy consumption turning the lights OFF.



SEMI BAFFLE FILTER

A baffle shapes stainless steel filter with mesh backing allows air to pass but blocks grease, which drops into the high capacity baffle cavities.



HIGH EFFICIENCY CARBON FILTERS

## REFRIGERATION

Elica's advanced Carbon Filters remove odors and other gaseous pollutants from the air, ensuring fresh and pure environment.

# ELICA'S EXCLUSIVE PLUS FEATURES



DOOR  
OPEN ALARM

## REFRIGERATION

To save energy and ensure proper preservation of your beverages, all Elica Undercabinet Refrigeration products come with a Door-Open Alarm, that will repeatedly beep when the door has been left ajar for longer than 5 minutes.



CONCEALED  
HINGE

## REFRIGERATION

Door hinges are hidden within the door and do not extend above the top of the door, allowing for a cleaner, more refined appearance, plus enabling the refrigerator to fit tighter within cabinetry.



EPC  
TECHNOLOGY

## REFRIGERATION

Elica Perfect Climate with double air duct cooling system. Meet Elica's Intelligent System with sensors that deliver precise and consistent temperature & humidity evenly throughout the entire compartment, so that all stored bottles are preserved under the same conditions.



QUIET  
OPERATION

## REFRIGERATION

Elica offers a speed-controlled motor, reducing exterior sound levels, while offering high ventilation performance to keep constant interior temperature and dampening any possible vibration that could disturb the preservation of wine or beverages.

# CONTACT INFO

## TECHNICAL SUPPORT & WARRANTY SERVICE:

### **USA & CANADA - Western Provinces**

888 732 8018

[elica@servicepower.com](mailto:elica@servicepower.com)

### **CANADA - Ontario Province**

888 651 2534

[service@agintl.qc.ca](mailto:service@agintl.qc.ca)

### **CANADA - Quebec & Atlantic Provinces**

800 463 0119

[service@ateliersgpaquette.com](mailto:service@ateliersgpaquette.com)

## PARTS, KITS AND ACCESSORIES:

### **For USA and Canada:**

Contact: Encompass

800 432 8542

[encompass.com/brands/eli/Elica](http://encompass.com/brands/eli/Elica)

or

Repair Clinic

800-269-2609

[Repairclinic.com](http://Repairclinic.com)

Don't forget to Register your Product to earn a Warranty Extension





[www.elica.com](http://www.elica.com)

