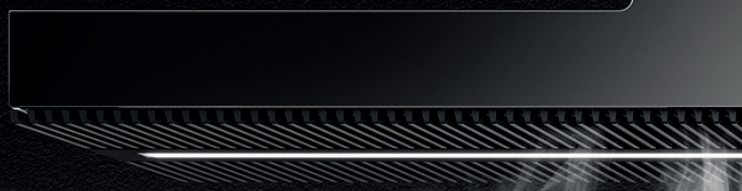


 elica
aria nuova



PRODUCT GUIDE





AIR IS PRECIOUS.
THIS EVERYDAY AWARENESS, HAS DRIVEN ELICA'S DESIGN
SENSE, SUPPORTED BY THE MOST ADVANCED TECHNOLOGY
IN THE FIELD. ALL ELICA SERIES ARE ABLE TO MEET THE
NEEDS RELATED TO THE DIFFERENT WAYS OF LIVING AND
COOKING ALL AROUND THE WORLD.

WHY ELICA?

The history of our brand began back in 1970 in Fabriano, Italy, where **our passion for design and quality** was born. An unmistakable style along with the meticulous studies of the air and its qualities, are our distinctive traits.

From the very beginning, we have been inspired by the principles of Italian Design, combining the most innovative technologies in the creation of our range hoods.

Over the years we have revolutionized the image of the hoods and the Elica brand can be found in homes all over the world. Our evolution has taken us into the world of cooking, providing unprecedented industry first solutions before anyone else that **never cease to amaze**. Our long history of cutting-edge design and technology has led to numerous patents, which have helped drive the future of appliances. At our global design center and the Elica Propulsion Laboratory, experts study air, moisture and heat, where they are researching and developing the products of tomorrow.

We are the market leader, producing 20.7 million pieces ranging from hoods to motors every year. Elica is represented world wide on five continents with manufacturing plants and commercial offices in Italy, Poland, Mexico, India, China and Russia.

These are some of the Awards where our products have been recognized:



INDEX

COOKTOPS WITH ASPIRATION SYSTEM



NIKOLATESLA SWITCH
page 9

RISERVA SERIES



EBS52SS1
page 11



EBS51SS1
page 12



EWS52SS1
page 13



EBF52SS1
page 14

ISLAND HOODS



EASY
page 16



SEASHELL
page 16



HAIKU IS & HAIKU IS COLORS
page 18



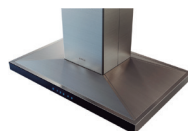
HAIKU IS
page 19



CINGOLI
page 25



MAGGIORE
page 26



SALICE
page 27



LEONE IS
page 33



VAVANO IS
page 34

INDEX

WALL-MOUNT HOODS



HAIKU INOX & COLORS
page 17



HAIKU
page 19



CATANIA
page 23



ORISTANO
page 24



COMO
page 25



LUGANO
page 26



MEZZANO
page 27



VARNA
page 28



FOGLIA
page 28



LEONE
page 33



VAVANO
page 34



CALABRIA
page 35



TOBLINO 24"
page 42



TOBLINO
page 42



POTENZA
page 43



BOLSENA
page 44



VOLTERRA 24"
page 46

INSERT HOODS



SCANNO
page 30



PALERMO
page 31



UMBRIA
page 34



AREZZO
page 34



TRENTO
page 37



ASTI
page 46



ASTI 30
page 46

INDEX

OUTDOOR HOOD



CAPRI
page 40

UNDERCABINET HOODS



ARIA
page 29



MODENA
page 30



CERVINIA
page 35



ALLASIO
page 41



NEMI
page 41



FUSARO
page 43



SORA
page 45



GUBBIO
page 45

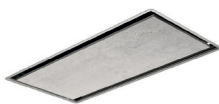


TT
page 47



BELLGIO
page 47

CEILING MOUNT HOODS



ILLUSION
page 20



HIGHLIGHT
page 20

DOWNDRAFT HOODS

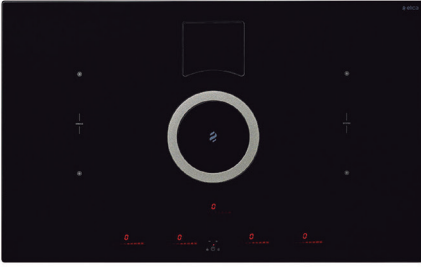


RISE
page 31



AIR COOKING

NIKOLATESLA is the first Elica exclusive Aspiration Cooktop, which combines functionality of two technologies: Induction + Ventilation System into one single appliance. No other cooking technology is faster than the induction elements, Nikolatesla Series makes a reality to boil 1L of water in less than 60 seconds. Elica's Air Cooking line offers all the benefits of the induction wonders: Safety, cleanliness, energy saving, PLUS the aspiration system of a powerful hood. Save time and space, uncover this elegant hi-tech design.



NIKOLATESLA SWITCH

INDUCTION COOKTOP

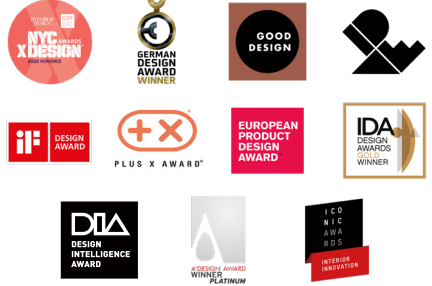
Model Numbers	ENS436BL
Wattage	440 W
Frequency	60 Hz
Voltage	208-240 V
Cooking Zones	4 zones of 7.1" x 7.9"
Bridge Zones	2
Heating Level	9 levels + booster

ASPIRATION SYSTEM

Aspiration levels	3 speed + booster ventilation
Blower performance	400 CFM (4 speed + boost)
Noise (sones)	5.9 sones
Duct transition	3 1/4" x 10" Rectangular
Filters	6 layer dishwasher-safe anodized aluminum mesh
Recirculating Kit	3 - Ceramic Carbon Filters

AIR COOKING

Size	36 1/2" W x 20 1/4" D x 8 1/4" H
Type Finish	Black glass
Installation Type	Ducted or recirculating Self rimming or flush mounted
Controls	Slider touch control





RISERVA SERIES

Fresh drinks as an alluring lifestyle.

Life is best when you improvise, but when it comes to your favorite beverages and wines it is better to be prepared and have them always handy!

Meet Elica's New Series of Undercabinet Beverage Centers and Wine Cellars, exquisitely designed to preserve them fresh to accompany the best moments of your life.



RISERVA

EBS52SS1 Beverage & Wine Center SINGLE DOOR DUAL ZONE

Width	24"
Dimension	23 13/32" W x 33 13/16" H x 23 5/8" D
Weight	128 lbs
Installation Type	Built-in and free standing
Volume	4.8 cu ft (135L)
Sound level	39 dBA
Door finish	304 stainless steel + tempered glass
Hinge Design	Concealed
Lighting	3 level white LED
Controls	Capacitive touch display with white numbers

COOLING ZONE 1 - BEVERAGES

Total Capacity	72 cans (12 oz cans)
Temperature Range	34 to 50 °F
Shelving	2 adjustable slide-out Tempered glass shelves

COOLING ZONE 2 - WINES

Total Capacity	14 bottles of wine (25 oz)
Temperature Range	40 to 64 °F
Shelving	1 full extension rack of beechwood with metal front trim

Door Handle	Tubular
Door glass	Tinted dual pane, Low-e-Argon-Filled
Reversible door	Yes

ELECTRICAL

Min. circuit required	15 A
AC Power	110- 120 V /60 Hz
Amperage	0.95 A
Plug Type	B
PRO Handle kit	KIT0175505



Others	Anti damping system Sabbath mode Beverage shelving made of tempered glass Premium beechwood wine racks Double panel glass door, UV coated 1 carbon filter
---------------	--



EPC
TECHNOLOGY



QUIET
OPERATION



ECO-MODE



OPEN DOOR
ALARM



CONCEALED
HINGE



HIGH EFFICIENCY
CARBON FILTERS



EBS51SS1

Beverage Center

SINGLE DOOR SINGLE ZONE

Width	24"
Dimension	23 13/32" W x 33 13/16" H x 23 5/8" D
Weight	128 lbs
Installation Type	Built-in and free standing
Volume	4.8 cu ft (135L)
Sound Level	39 dBA
Door Finish	304 stainless steel + tempered glass
Hinge Design	Concealed
Lighting	3 level white LED
Controls	Capacitive touch display with white numbers

COOLING ZONE 1 - BEVERAGES

Total Capacity	>120 cans (12 oz cans)
Temperature Range	34 to 65 °F
Shelving	3 Adjustable slide-out tempered glass shelves with metal front trim (without rollers)

RISERVA

Door Handle	Tubular
Door glass	Tinted dual pane, Low-e-Argon-Filled
Reversible door	Yes

ELECTRICAL

Min. circuit required	15 A
AC Power	110- 120 V /60 Hz
Amperage	0.95 A
Plug Type	B
PRO Handle kit	KIT0175505



Others	Anti damping system Sabbath mode Beverage shelving made of tempered glass Premium beechwood wine racks Double panel glass door, UV coated
---------------	---



EPC
TECHNOLOGY



QUIET
OPERATION



ECO-MODE



OPEN DOOR
ALARM



CONCEALED
HINGE



HIGH EFFICIENCY
CARBON FILTERS



EWS52SS1

Wine Cellar

SINGLE DOOR DUAL ZONE

Width	24"
Dimension	23 13/32" W x 33 13/16" H x 23 5/8" D
Weight	128 lbs
Installation Type	Built-in and free standing
Volume	4.8 cu ft (135L)
Sound Level	39 dBA
Door Finish	304 stainless steel + tempered glass
Hinge Design	Concealed
Lighting	3 level white LED
Controls	Capacitive touch display with white numbers

COOLING ZONE 1 - WHITE WINE

Total Capacity	16 bottles of wine (25 oz)
Temperature Range	40 to 50 °F
Shelving	2 full extension racks of beechwood with metal front trim

COOLING ZONE 2 - RED WINE

Total Capacity	36 bottles of wine (25 oz)
Temperature Range	50 to 64 °F
Shelving	3 full extension rack of beechwood with metal front trim

RISERVA

Door Handle	Tubular
Door glass	Tinted dual pane, Low-e-Argon-Filled
Reversible door	Yes

ELECTRICAL

Min. circuit required	15 A
AC Power	110- 120 V /60 Hz
Amperage	0.95 A
Plug Type	B
PRO Handle Kit	KIT0175505



Others	Anti damping system Sabbath mode Beverage shelving made of tempered glass Premium beechwood wine racks Double panel glass door, UV coated
---------------	---



EPC
TECHNOLOGY



QUIET
OPERATION



ECO-MODE



OPEN DOOR
ALARM



CONCEALED
HINGE



HIGH EFFICIENCY
CARBON FILTERS



EBFS52SS1

Beverage & Wine Center

FRENCH DOOR DUAL ZONE

Width	24"
Dimension	23 13/32" W x 34 13/16" H x 22 13/32" D
Weight	117 lbs
Installation Type	Built-in and free standing
Volume	4.8 cu ft (135L)
Sound Level	39 dBA
Door Finish	304 stainless steel + tempered glass
Hinge Design	Concealed
Lighting	3 level white LED
Controls	Capacitive touch display with white numbers

COOLING ZONE 1 - BEVERAGES

Total Capacity	> 60 cans (12 oz)
Temperature Range	34 to 68 °F
Shelving	3 adjustable slide-out tempered glass shelves with metal front trim

COOLING ZONE 2 - WINES

Total Capacity	21 bottles of wine (25 oz)
Temperature Range	34 to 68 °F
Shelving	6 pieces beechwood shelves with metal front trim

RISERVA

Door Handle	Tubular
Door glass	Tinted dual pane, Low-e-Argon-Filled
Reversible door	No

ELECTRICAL

Min. circuit required	15 A
AC Power	110- 120 V /60 Hz
Amperage	0.95 A
Plug Type	B

PRO Handle kit	KIT0175505 (2 kits needed for french door)
-----------------------	---



Others	Anti damping system Sabbath mode Beverage shelving made of tempered glass Premium beechwood wine racks Double panel glass door, UV coated
---------------	---



EPC
TECHNOLOGY



QUIET
OPERATION



ECO-MODE



OPEN DOOR
ALARM



CONCEALED
HINGE



HIGH EFFICIENCY
CARBON FILTERS



Iconic line hoods are uniquely Italian, with a focus on design that makes a statement in any home, providing captivating beauty, complemented by innovative materials and technology that promotes curiosity, emotion and conversation.



EASY

ISLAND

Model Numbers	EES320SS, EES320WT
Width	20"
Depth	20"
Color / Material	Stainless steel / White
Blower Performance	355 CFM (3-speed + boost)
Controls	Electronic push control with perimetral light
Lighting	3 LED Lights
Filter	Aluminium mesh filter + Perimeter aspiration
Installation Type	Recirculating
Installation Height	For ceiling heights 6'10" - 11'8"
Sones	6.8 sones
Others	Timer
KIT	
Optional wall mounting bracket	KIT0121394
High ceiling extension	KIT01921



TOUCH CONTROL



PERIMETER ASPIRATION



LONG LIFE FILTER



CLEAN FILTER ALARM



REPLACE FILTER ALARM



LED LIGHT



SEASHELL

ISLAND

Model Numbers	ESS432SS
Width	31 1/2"
Depth	31 1/2"
Color / Material	Mirror look stainless steel
Blower Performance	400 CFM (43-speed)
Controls	Remote control
Lighting	4 strip LED + LED disk
Filter	Aluminium grease filter + regenerable charcoal filter
Installation Type	Recirculating only
Installation Height	For ceiling height 6'11" - 11'1"
Sones	5.9 sones
KIT	
High ceiling extension	KIT0067590
Black remote control	KIT0121469
White remote control	KIT0121468



LONG LIFE FILTER



REMOTE CONTROL



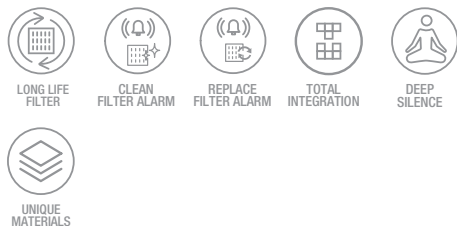
DELAY SWITCH OFF



HAIKU

WALL MOUNT

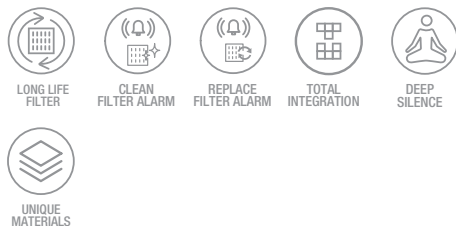
Model Numbers	EHK624SS, EHK636SS, EHK648SS
Width	24", 36", 48"
Depth	12 3/5" to 15"
Color / Material	Stainless steel
Blower Performance	600 CFM (3-speed + boost)
Controls	Sensitive touch control with backlight
Lighting	Strip LED
Filter	Sophisticated black iron grates + 6 layer mesh filter
Installation Type	Ducted or recirculating (kit sold separately)
Installation Height	For ceiling heights 7'3" - 9'10" (ducted) 7'3" - 10'1" (recirculating)
Transition	6" round
Sones	6.8 sones
KIT	
Recirculating Kit	CFC0141725AUL



HAIKU COLOR

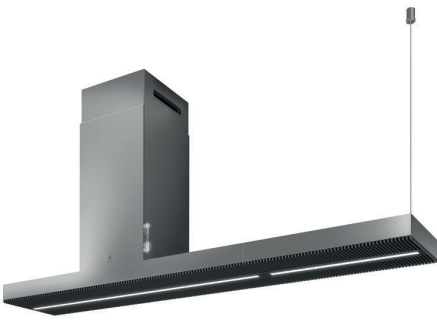
WALL MOUNT

Model Numbers	EHK636WH, EHK636BL
Width	36"
Depth	12 3/5" to 15"
Color / Material	Black glass / White KRION®
Blower Performance	600 CFM (3-speed + boost)
Controls	Sensitive touch control with backlight
Lighting	Strip LED
Filter	Sophisticated black iron grates + 6 layer mesh filter
Installation Type	Ducted or recirculating (kit sold separately)
Installation Height	For ceiling heights 7'3" - 9'10" (ducted) 7'3" - 10'1" (recirculating)
Transition	6" round
Sones	6.8 sones
KIT	
Recirculating Kit	CFC0141725AUL



*White KRION® ecological material that has antibacterial properties and can be 100% recycled. Easy repair and cleaning due to the absence of porosity.





HAIKU

ISLAND

Model Numbers	EHI648SS, EHI670SS
Width	48", 70"
Depth	13"
Color / Material	Stainless steel
Blower Performance	600 CFM (3-speed + boost)
Controls	Sensitive touch control with backlight
Lighting	Strip LED
Filter	Sophisticated black iron grates + 6 layer mesh filter
Installation Type	Ducted or recirculating (kit sold separately)
Installation Height	For ceiling heights 7'11" - 9'11" (ducted) 7'11" - 10'1" (recirculating)
Transition	6" round
Sones	6.8 sones
KIT	
Recirculating Kit	CFC0141725AUL



LONG LIFE FILTER



CLEAN FILTER ALARM



REPLACE FILTER ALARM



TOTAL INTEGRATION



DEEP SILENCE



UNIQUE MATERIALS



HAIKU COLOR

ISLAND

Model Numbers	EHI648BL, EHI648WH
Width	48"
Depth	13"
Color / Material	Black glass / White KRION®
Blower Performance	600 CFM (3-speed + boost)
Controls	Sensitive touch control with backlight
Lighting	Strip LED
Filter	Sophisticated black iron grates + 6 layer mesh filter
Installation Type	Ducted or recirculating (kit sold separately)
Installation Height	For ceiling heights 7'11" - 9'11" (ducted) 7'11" - 10'1" (recirculating)
Transition	6" round
Sones	6.8 sones
KIT	
Recirculating Kit	CFC0141725AUL



LONG LIFE FILTER



CLEAN FILTER ALARM



REPLACE FILTER ALARM



TOTAL INTEGRATION



DEEP SILENCE



UNIQUE MATERIALS

*Material ecológico KRION® blanco que tiene propiedades antibacterianas y puede ser 100% reciclado. Fácil reparación y limpieza gracias a la ausencia de porosidad.





HAIKU

WALL MOUNT

Model Numbers	EHK613SS
Width	13"
Depth	12 3/5" to 15"
Color / Material	Stainless steel
Blower Performance	600 CFM (3-speed + boost)
Controls	Sensitive touch control with backlight
Lighting	Strip LED
Filter	Sophisticated black iron grates + 6 layer mesh filter
Installation Type	Ducted or recirculating (kit sold separately)
Installation Height	For ceiling heights 7'3" - 9'10" (ducted) 7'3" - 10'1" (recirculating)
Transition	6" round
Sones	6.8 sones
Others	Clean filter indicator

KIT
 Recirculating Kit CFC0141725AUL

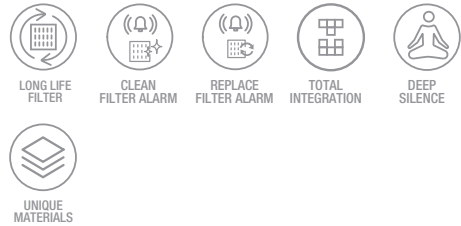


HAIKU

ISLAND

Model Numbers	EHK613SS
Width	13"
Depth	13"
Color / Material	Stainless steel
Blower Performance	600 CFM (3-speed + boost)
Controls	Sensitive touch control with backlight
Lighting	Strip LED
Filter	Sophisticated black iron grates + 6 layer mesh filter
Installation Type	Ducted or recirculating (kit sold separately)
Installation Height	For ceiling heights 7'11" - 9'11" (ducted) 7'11" - 10'1" (recirculating)
Transition	6" round
Sones	6.8 sones
Others	Clean filter indicator

KIT
 Recirculating Kit CFC0141725AUL





ILLUSION

CEILING

Model Numbers EIL640WH, EIL640DW

Width 40"

Depth 19 11/16"

Color / Material Metal white with white frame/
naked panel + stainless steel frame

Blower Performance 600 CFM (3-speed + boost)

Controls Remote control

Lighting Strip LED light with dimmable
+ tunable lighting

Filter Aluminum mesh filter
+ perimetral aspiration

Installation Type Ducted or recirculating
(kit sold separately)

Installation Height For ceiling heights up to 10'0"

Transition 6" round (multi directional)

Sones 6.8 sones

Others Long strip LED
Timer
Panel ready

KIT
Recirculating Kit KIT0167875



REMOTE
CONTROL



TUNE WHITE



SUPER EASY
INSTALLATION



UNIQUE
MATERIALS



DIM LIGHT



TOTAL INTEGRA-



REPLACE



CLEAN



HIGHLIGHT

CEILING

Model Numbers EHL640WH, EHL640SS

Width 40"

Depth 22 11/25"

Color / Material White glass with metal
white frame / stainless steel

Blower Performance 600 CFM (3-speed + boost)

Controls Remote control

Lighting Strip LED light with dimmable
+ tunable lighting

Filter Aluminum mesh filter
+ perimetral aspiration

Installation Type Ducted or recirculating
(kit sold separately)

Installation Height For ceiling heights up to 10'0"

Transition 6" round (multi directional)

Sones 6.8 sones

Others Long strip LED
Timer
White glass: gives the look as if it
was all illuminated

KIT
Recirculating Kit KIT0167875



REMOTE
CONTROL



TUNE WHITE



SUPER EASY
INSTALLATION



UNIQUE
MATERIALS



DIM LIGHT



TOTAL INTEGRA-
TION



REPLACE
FILTER ALARM



CLEAN
FILTER ALARM



DISEGNO

Elica's statement hoods, inspired by the traditional architecture, **Disegno** series combine performance and a bold design to complement the most exquisite kitchens. With seamless edges, mirrored stainless front rims and decorative banding & rivets deliver design to support those with a passion for food and gourmet cooking.



CATANIA 36

WALL MOUNT

Model Numbers	ECTX36SS
Width	36"
Depth	22"

Color / Material	Stainless steel, front rim + decorative bands & rivets (stainless steel mirror look)
-------------------------	--

Requires a Trento Insert	ETR634SS, ETR134SI
---------------------------------	--------------------

Blower Performance	600 CFM/1200 CFM
---------------------------	------------------

Controls	Fully retractable rotating knobs with blue backlight
-----------------	--

Lighting	2 LED lights
-----------------	--------------

Filter	Dishwasher safe professional stainless steel baffle filters
---------------	---

Installation Type	Ducted installation only
--------------------------	--------------------------

Transition	10" round
-------------------	-----------

Sones	7 sones / 8.5 sones
--------------	---------------------

KIT	
Duct cover extension 6" tall	KIT0182785
Duct cover extension 18" tall	KIT0182786
Compatible with Trento KITS	



ELICA EASY MOUNTING



REAR OUTLET INSTALLATION



HUSH SYSTEM



SEAMLESS LOOK



GREASE COLLECTORS



HEAT GUARD



PROFESSIONAL PERFORMANCE



CATANIA 48

WALL MOUNT

Model Numbers	ECTX48SS
Width	48"
Depth	22"

Color / Material	Stainless steel, front rim + decorative bands & rivets (stainless steel mirror look)
-------------------------	--

Requires a Trento Insert	ETRI46SS
---------------------------------	----------

Blower Performance	1200 CFM
---------------------------	----------

Controls	Fully retractable rotating knobs with blue backlight
-----------------	--

Lighting	2 LED lights
-----------------	--------------

Filter	Dishwasher safe professional stainless steel baffle filters
---------------	---

Installation Type	Ducted installation only
--------------------------	--------------------------

Transition	10" round
-------------------	-----------

Sones	8.5 sones
--------------	-----------

KIT	
Duct cover extension 6" tall	KIT0182787
Duct cover extension 18" tall	KIT0182788
Compatible with Trento KITS	



ELICA EASY MOUNTING



REAR OUTLET INSTALLATION



HUSH SYSTEM



SEAMLESS LOOK



GREASE COLLECTORS



HEAT GUARD



PROFESSIONAL PERFORMANCE



ORISTANO 36

WALL MOUNT

Model Numbers	EORX36SS
Width	36"
Depth	24"

Color / Material Stainless steel, front rim + decorative bands & rivets (stainless steel mirror look)

Requires Arezzo Insert EAR634SS, EAR134S4

Blower Performance 600 CFM/1200 CFM

Controls Fully retractable rotating knobs with blue backlight

Lighting 2 LED lights

Filter Dishwasher safe professional stainless steel baffle filters

Installation Type Ducted installation only

Transition 10" round

Sones 7 sones / 8.5 sones

KIT
 Duct cover extension 6" tall KIT0182781
 Duct cover extension 18" tall KIT0182782
 Compatible with Trento KITS



ELICA EASY MOUNTING



REAR OUTLET INSTALLATION



HUSH SYSTEM



SEAMLESS LOOK



GREASE COLLECTORS



HEAT GUARD



PROFESSIONAL PERFORMANCE



ORISTANO 48

WALL MOUNT

Model Numbers	EORX48SS
Width	48"
Depth	24"

Color / Material Stainless steel, front rim + decorative bands & rivets (stainless steel mirror look)

Requires Arezzo Insert EAR140S4

Blower Performance 1200 CFM

Controls Fully retractable rotating knobs with blue backlight

Lighting 4 LED lights

Filter Dishwasher safe professional stainless steel baffle filters

Installation Type Ducted installation only

Transition 10" round

Sones 8.5 sones

KIT
 Duct cover extension 6" tall KIT0182783
 Duct cover extension 18" tall KIT0182784
 Compatible with Trento KITS



ELICA EASY MOUNTING



REAR OUTLET INSTALLATION



HUSH SYSTEM



SEAMLESS LOOK



GREASE COLLECTORS



HEAT GUARD



PROFESSIONAL PERFORMANCE



TECHNE

Techne Line brings everyday Italian living into your kitchen, featuring inspirational classic Italian designs, loaded with functional technologies that deliver convenience and high performance. Techne hoods come equipped with powerful blowers, hush sound suppression system, elegant glass touch controls and the possibility to set the desired illumination mood with long life LED lighting, where temperature and luminosity can be dimmed and adjusted.

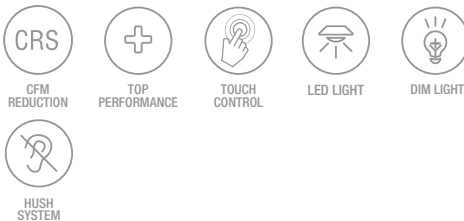


COMO

WALL MOUNT

Model Numbers	ECM630S3, ECM636S3
Width	30", 36"
Depth	19 11/16"
Color / Material	Stainless steel with controls in black glass
Blower Performance	600 CFM (3-speed + boost) with CRS System to limit CFM
Controls	Capacitive touch (glass)
Lighting	2 LED premium dimmable lights
Filter	Dishwasher-safe, anodized stainless steel microhole filter
Installation Type	Ducted or recirculating (kit sold separately)
Installation Height	For ceiling heights 7'6" - 10'2" (ducted) 7'10" - 10'5" (recirculating)
Transition	6" round
Sones	6.8 sones

KIT	
Recirculating Kit	KIT02766
Long chimney extension	KIT0100315
Charcoal filter replacement	KIT02667

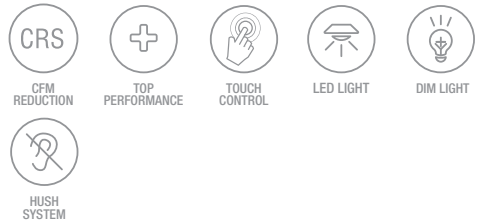


CINGOLI

ISLAND

Model Numbers	ECN636S3, ECN642S3
Width	36", 42"
Depth	25 1/4"
Color / Material	Stainless steel with controls in black glass
Blower Performance	600 CFM (3-speed + boost) with CRS System to limit CFM
Controls	Capacitive touch (glass)
Lighting	2 LED premium dimmable lights
Filter	Dishwasher-safe, anodized stainless steel microhole filter
Installation Type	Ducted or recirculating (kit sold separately)
Installation Height	For ceiling heights 7'6" - 9'8" (ducted) 7'6" - 10'1" (recirculating)
Transition	6" round
Sones	6.8 sones

KIT	
Recirculating Kit	KIT02665
Long chimney extension	KIT0100317
Charcoal filter replacement	KIT02667

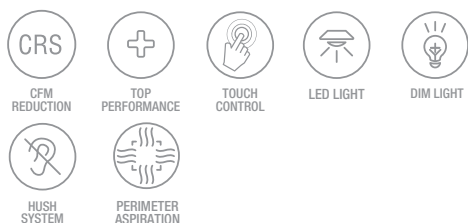




LUGANO

WALL MOUNT

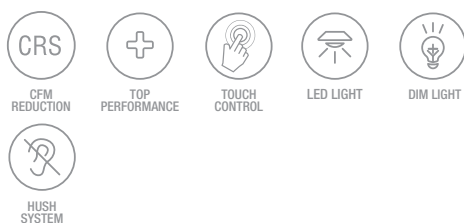
Model Numbers	ELG630S3, ELG636S3
Width	30", 36"
Depth	19 7/8"
Color / Material	Stainless steel with controls in black glass
Blower Performance	600 CFM (3-speed + boost) with CRS System to limit CFM
Controls	Capacitive touch (glass)
Lighting	2 LED premium dimmable lights
Filter	Aluminum mesh filter + Perimeter aspiration
Installation Type	Ducted or recirculating (kit sold separately)
Installation Height	For ceiling heights 7'0" - 9'2" (ducted) 7'5" - 9'6" (recirculating)
Transition	6" round
Sones	6.8 sones
KIT	
Recirculating Kit	KIT0141925
Long chimney extension	KIT02785, KIT01935
Charcoal filter replacement	KIT0141918



MAGGIORE

WALL MOUNT

Model Numbers	EMG636S1, EMG642S1
Width	36", 42"
Depth	27 1/8"
Color / Material	Stainless steel with controls in black glass
Blower Performance	600 CFM (3-speed + boost) with CRS System to limit CFM
Controls	Capacitive touch (glass)
Lighting	4 LED premium dimmable lights
Filter	Dishwasher-safe stainless steel microhole filters
Installation Type	Ducted or recirculating (kit sold separately)
Installation Height	For ceiling heights 7'6" - 9'9" (ducted) 7'6" - 10'2" (recirculating)
Transition	6" round
Sones	6.8 sones
KIT	
Recirculating Kit	KIT02665
Long chimney extension	KIT0100317
Charcoal filter replacement	KIT02667

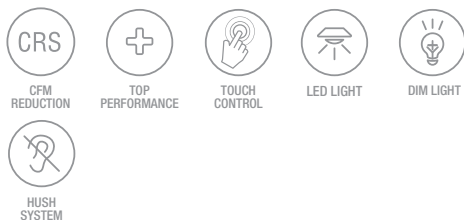




MEZZANO

WALL MOUNT

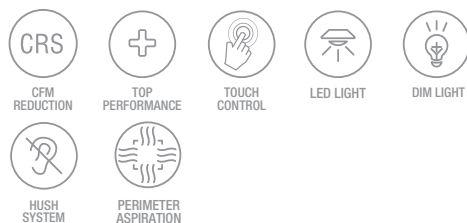
Model Numbers	EMZ630S3, EMZ636S3
Width	30", 36"
Depth	19 11/16"
Color / Material	Stainless steel with controls in black glass
Blower Performance	600 CFM (3-speed + boost) with CRS System to limit CFM
Controls	Capacitive touch (glass)
Lighting	2 LED premium dimmable lights
Filter	Dishwasher-safe stainless steel microhole filters
Installation Type	Ducted or recirculating (kit sold separately)
Installation Height	For ceiling heights 7'6" - 10'2" (ducted) 7'10" - 10'6" (recirculating)
Transition	6" round
Sones	6.8 sones
KIT	
Recirculating Kit	KIT0102875
Long chimney extension	KIT02785



SALICE

ISLAND

Model Numbers	ESL636S3, ESL642S3
Width	36", 42"
Depth	27 13/16"
Color / Material	Stainless steel with controls in black glass
Blower Performance	600 CFM (3-speed + boost) with CRS System to limit CFM
Controls	Capacitive touch (glass)
Lighting	4 LED premium dimmable lights
Filter	Aluminum mesh filter + Perimeter aspiration
Installation Type	Ducted or recirculating (kit sold separately)
Installation Height	For ceiling heights 7'9" - 9'11" (ducted) 7'9" - 10'4" (recirculating)
Transition	6" round
Sones	6.8 sones
KIT	
Recirculating Kit	KIT0141924
Long chimney extension	KIT0100317
Charcoal filter replacement	KIT0141918

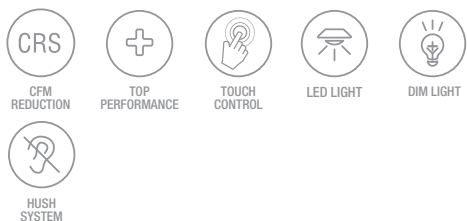




VARNA

WALL MOUNT

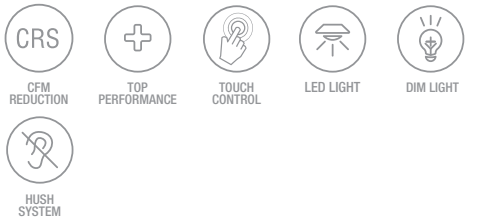
Model Numbers	EVR630S2, EVR636S2
Width	30", 36"
Depth	19 11/16"
Color / Material	Stainless steel with controls in black glass
Blower Performance	600 CFM (3-speed + boost) with CRS System to limit CFM
Controls	Capacitive touch (glass)
Lighting	2 LED premium dimmable lights
Filter	Dishwasher- safe stainless steel microhole filters
Installation Type	Ducted or recirculating (kit sold separately)
Installation Height	For ceiling heights 7'5" - 9'1" (ducted) 7'5" - 9'6" (recirculating)
Transition	6" round
Sones	6.8 sones
KIT	
Recirculating Kit	KIT02766
Long chimney extension	KIT02762



FOGLIA

WALL MOUNT

Model Numbers	EFG630S1, EFG636S1
Width	30", 36"
Depth	19 11/16"
Color / Material	Stainless steel with controls in black glass
Blower Performance	600 CFM (3-speed + boost) with CRS System to limit CFM
Controls	Capacitive touch (glass)
Lighting	2 LED premium dimmable lights
Filter	Dishwasher-safe stainless steel microhole filters
Installation Type	Ducted or recirculating (kit sold separately)
Installation Height	For ceiling heights 7'5" - 9'2" (ducted) 7'5" - 9'6" (recirculating)
Transition	6" round
Sones	6.8 sones
KIT	
Recirculating Kit	KIT02766
Long chimney extension	KIT02784





ARIA

UNDERCABINET

Model Numbers	EAI430SS, EAI436SS
Width	30", 36"
Depth	20"
Color / Material	Stainless steel with controls in black glass
Blower Performance	430 CFM (3-speed + boost) with CRS System to limit CFM
Controls	Capacitive touch (glass)
Lighting	2 LED premium dimmable lights
Filter	2 dishwasher-safe stainless steel baffle slot filters
Installation Type	Ducted or recirculating (kit sold separately)
Transition	3 1/4" x 10" top / Rear or 7" round top (sold separately)
Sones	6.1 sones
KIT	
Recirculating Kit	30" : KIT02178, 36" : KIT02179
Backdraft damper 7" round	KIT02723



MODENA

UNDERCABINET

Model Numbers	EMD530S3, EMD536S3
Width	30", 36"
Depth	19 5/8"
Color / Material	Stainless steel with controls in black glass
Blower Performance	600 CFM (3-speed + boost) with CRS System to limit CFM
Controls	Capacitive touch (glass)
Lighting	2 LED premium dimmable lights
Filter	Dishwasher-safe stainless steel microhole filters
Installation Type	Ducted or recirculating (kit sold separately)
Transition	3 1/4" x 10" rectangular (rear outlet) and 6" round (top outlet)
Sones	6.8 sones
KIT	
Recirculating Kit	KIT02667





UMBRIA

INSERT

Model Numbers	EUM628SS, EUM634SS
Width	28", 34"
Depth	10 3/4"
Color / Material	Stainless steel
Blower Performance	600 CFM, 3-Speed Internal
Controls	Stainless Steel Push Buttons
Lighting	2 LED premium dimmable lights
Filter	Dishwasher-Safe, Anodized Aluminum, Mesh Filter + Perimeter Aspiration
Installation Type	Ducted or recirculating (kit sold separately)
Transition	6" round (top outlet)
Sones	6.8 sones

KIT

Recirculating Kit	KIT02770
CFM Reduction Kit	KIT02748
Optional 30" Hood Liner	28" :KIT02773
Optional 36" Hood Liner	28" : KIT02774
CFM Reduction Kit	KIT0175561



TOP PERFORMANCE



HUSH SYSTEM



LED LIGHT



PERIMETER ASPIRATION



PALERMO

INSERT

Model Numbers	EPR628S1, EPR634SS
Width	28", 34"
Depth	10 3/4"
Color / Material	Stainless steel
Blower Performance	600 CFM (3-speed)
Controls	Stainless steel push button
Lighting	2 LED lights
Filter	Dishwasher-safe stainless steel baffle slot filters
Installation Type	Ducted or recirculating (kit sold separately)
Transition	6" round
Sones	6.8 sones

KIT

Recirculating Kit	KIT02770
Hood liner 30"	KIT02773
Hood liner 36"	KIT02774
CFM Reduction Kit	KIT02748



CFM REDUCTION



HUSH SYSTEM



SEMI BAFFLE FILTER



LED LIGHT



RISE

DOWNDRAFT

Model Numbers	ERS630S1, ERS636S1
Width	30", 36"
Depth	12 1/2"
Color / Material	Stainless steel
Blower Performance	600 CFM (3-speed + boost)
Controls	External electronic rotating disk + LCD
Filter	Aluminum mesh filter + Perimeter aspiration
Installation Type	Ducted installation only
Transition	6" round (multi directional)
Sones	6.8 sones
KIT	
CFM Reduction kit	KIT02748



TOP
PERFORMANCE



PERIMETER
ASPIRATION



ELICA PRO

For those inspired by the culinary arts and gourmet cooking, **Elica Pro** line range hoods deliver professional style cooking, with bold design coupled with unparalleled durability, quality and high performance that top chefs desire.



LEONE

WALL MOUNT

Model Numbers	ELN630S2, ELN636SS ELN136S2, ELN142S2, ELN148SS
Width	30", 36", 42", 48"
Depth	24"
Color / Material	Stainless steel
Blower Performance	30", 36": 600 CFM (4-speed) 36", 42", 48": 1200 CFM (4-speed)
Controls	Fully retractable rotating knobs with blue backlight
Lighting	2 LED lights
Filter	Dishwasher-safe, professional stainless steel baffle
Installation Type	Ducted installation only
Installation Height	For ceiling heights 7'6"-10'0" (over electric cooking), 8'0"-10'0"(over gas cooking)
Transition	8" round (top)
Sones	7 sones / 8.5 sones
KIT	
Long chimney extension	KIT02785
1200 CFM external blower	KIT0153054
1200 CFM inline blower	KIT0154387
Inline Blower Shell Kit	KIT0179549
External Blower Shell Kit	KIT0179547
CFM Reduction Kit	KIT0185752, KIT0185099
Recirculating Kit	
Deflector	KIT0192759
Round carbon filters	KIT0192765



LEONE IS

ISLAND

Model Numbers	ELI136S2, ELI142S2
Width	36", 42"
Depth	27"
Color / Material	Stainless steel
Blower Performance	1200 CFM (4-speed)
Controls	Fully retractable rotating knobs with blue backlight
Lighting	4 LED lights
Filter	Dishwasher-safe, professional stainless steel baffle
Installation Type	Ducted installation only
Installation Height	For ceiling heights 7'9" - 9'10" (over electric cooking) 8'3" - 9'10" (over gas cooking)
Transition	8" round (top)
Sones	8.5 sones
KIT	
Long chimney extension Kit	KIT0100317
1200 CFM external blower	KIT0153054
1200 CFM inline blower	KIT0154387
Inline Blower Shell Kit	KIT0179549
External Blower Shell Kit	KIT0179547
CFM Reduction Kit	KIT0185099
Recirculating Kit	
Deflector	KIT0192761
Round carbon filters	KIT0192765



HUSH
SYSTEM



HEAT
GUARD



PROFESSIONAL
PERFORMANCE



GREASE
COLLECTORS



SEAMLESS
LOOK



HUSH
SYSTEM



HEAT
GUARD



PROFESSIONAL
PERFORMANCE



GREASE
COLLECTORS



SEAMLESS
LOOK



VAVANO

WALL MOUNT

Model Numbers	EVV636S1, EVV648S1
Width	36", 48"
Depth	24"
Color / Material	Stainless steel
Blower Performance	600 CFM (4-speed)
Controls	Fully retractable rotating knobs with blue backlight
Lighting	2 LED lights
Filter	Dishwasher-safe, professional stainless steel baffle
Installation Type	Ducted installation only
Installation Height	For ceiling heights 7'6"-10'6" (over electric cooking), 8'0"-10'6" (over gas cooking)
Transition	8" round (top)
Sones	7 sones

KIT	
1200 CFM Inline blower	KIT0154387
1200 CFM External blower	KIT0153054
Long Chimney Extension 13' 6"	KIT0146881-KIT02785
6" Round Transition	BH01UB
CFM Reduction Kit	KIT0185752



HUSH SYSTEM



HEAT GUARD



PROFESSIONAL PERFORMANCE



GREASE COLLECTORS



SEAMLESS LOOK



VAVANO IS

ISLAND

Model Numbers	EVI642S1, EVI648S1
Width	42", 48"
Depth	24"
Color / Material	Stainless steel
Blower Performance	600 CFM (4-speed)
Controls	Fully retractable rotating knobs with blue backlight
Lighting	4 LED lights
Filter	Dishwasher-safe, professional stainless steel baffle
Installation Type	Ducted installation only
Installation Height	For ceiling heights 7'6" - 10'1" (over electric cooking) 8'0" - 10'1" (over gas cooking)
Transition	8" round (top)
Sones	7 sones

KIT	
Long Chimney Extension	KIT0145610
1200 CFM External blower	KIT0153054
1200 CFM Inline blower	KIT0154387
CFM Reduction Kit	KIT0185752
6" Round Transition	BH01UB



HUSH SYSTEM



HEAT GUARD



PROFESSIONAL PERFORMANCE



GREASE COLLECTORS



SEAMLESS LOOK



CALABRIA

WALL MOUNT

Model Numbers	ECL630S4, ECL636SS, ECL136S4, ECL142S4, ECL148S4
Width	30", 36", 42", 48"
Depth	25"
Color / Material	Stainless steel
Blower Performance	30", 36": 600 CFM (4-speed) 36", 42", 48": 1200 CFM (4-speed)
Controls	Fully retractable rotating knobs with blue backlight
Lighting	30", 36", 42": 2 LED lights 48": 4 LED lights
Filter	Dishwasher-safe, professional stainless steel baffle
Installation Type	Ducted installation only
Transition	10" round (top)
Sones	7 sones/8.5 sones
Others	Stackable ducts

KIT

Long chimney extension 6":	30" : KIT02159, 36" : KIT021598, 42" : KIT02622, 48" : KIT02164
Long chimney extension 12":	30" : KIT02160, 36" : KIT02161, 42" : KIT02623, 48" : KIT02165
Heat lamp w/2 75W bulbs kit :	30" : KIT0155106, 36" : KIT0155107, 42" : KIT0155110, 48" : KIT0155111
Stainless backsplash:	30" : KIT0142864, 36" : KIT0142867, 42" : KIT0142868, 48" : KIT0142870
1200 CFM external blower:	KIT0153054
1200 CFM Inline blower:	KIT0154387
External Blower Shell Kit:	KIT0179547
Inline Blower Shell Kit:	KIT0179549
CFM Reduction Kit	KIT0185752, KIT0185099
Recirculating Kit	
Deflector	KIT0192763
Round carbon filters	KIT0192765



CERVINIA

UNDERCABINET

Model Numbers	ECV630S3, ECV636S3
Width	30", 36"
Depth	23"
Color / Material	Stainless steel
Blower Performance	600 CFM (4-speed)
Controls	Fully retractable rotating knobs with blue backlight
Lighting	2 LED lights
Filter	Dishwasher-safe, professional stainless steel baffle
Installation Type	Ducted installation only
Transition	3 1/4 X 10" (top and rear)
Sones	7 sones
Others	Stackable ducts

KIT

Long chimney extension 6"	30" : KIT02159 36" : KIT02158
Long chimney extension 12"	30" : KIT02160 36" : KIT02161
Stainless backsplash	30" : KIT0142864 36" : KIT0142867
Inline Blower Kit	KIT0154387
External Blower Kit	KIT0153054
CFM Reduction Kit	KIT0185097



HUSH SYSTEM



HEAT GUARD



PROFESSIONAL PERFORMANCE



GREASE COLLECTORS



SEAMLESS LOOK



HUSH SYSTEM



HEAT GUARD



PROFESSIONAL PERFORMANCE



GREASE COLLECTORS



SEAMLESS LOOK



AREZZO

INSERT

Model Numbers EAR628S4, EAR634SS
EAR134S4, EAR140S4, EAR146S4

Width 28", 34", 40", 46"

Depth 22"

Color / Material Stainless steel

Blower Performance 28", 34": 600 CFM (4-speed)
34", 40", 46": 1200 CFM (4-speed)

Controls Fully retractable rotating knobs
with blue backlight

Lighting 28" 34": 2 LED lights
40", 46": 4 LED lights

Filter Dishwasher-safe, professional
stainless steel baffle

Installation Type Ducted installation only

Transition 10" round (top)

Sones 7 sones / 8.5 sones

KIT
1200 CFM external blower KIT0153054
1200 CFM Inline blower KIT0154387
Inline Blower Shell Kit KIT0179549
External Blower Shell Kit KIT0179547
CFM Reduction Kit KIT0185752, KIT0185099

Recirculating Kit
Deflector KIT0192763
Round carbon filters KIT0192765



HUSH
SYSTEM



HEAT GUARD



PROFESSIONAL
PERFORMANCE



GREASE
COLLECTORS



SEAMLESS
LOOK



TRENTO

INSERT

Model Numbers ETR628SS, ETR634SS, ETR134SS,
ETR146SS

Width 28", 34", 46"

Depth 18"

Color / Material Stainless steel

Blower Performance 28", 34": 600 CFM (4-speed)
34", 46": 1200 CFM (4-speed)

Controls Fully retractable rotating knobs
with blue backlight

Lighting 2 LED lights

Filter Dishwasher-safe, professional
stainless steel baffle

Installation Type Ducted installation only

Transition 10" round (top)

Sones 7 sones / 8.5 sones

KIT
1200 CFM external blower KIT0153054
1200 CFM Inline blower KIT0154387
Inline Blower Shell Kit KIT0179549
External Blower Shell Kit KIT0179547
CFM Reduction Kit KIT0185752, KIT0185099

Recirculating Kit
Deflector KIT0192763
Round carbon filters KIT0192765



HUSH
SYSTEM



HEAT GUARD



PROFESSIONAL
PERFORMANCE



GREASE
COLLECTORS



SEAMLESS
LOOK



SCANNO

INSERT

Model Numbers	ESC628SS, ESC134SS
Width	28", 34"
Depth	15 5/8"
Color / Material	Stainless steel
Blower Performance	28": 600 CFM (4-speed) 34": 1200 CFM (4-speed)
Controls	Fully retractable rotating knobs with blue backlight
Lighting	2 LED lights
Filter	Dishwasher-safe, professional stainless steel baffle
Installation Type	Ducted installation only
Transition	10" round (top)
Sones	7 sones / 8.5 sones

KIT

1200 CFM External blower	KIT0153054
1200 CFM Inline blower	KIT0154387
10" to 8" transition Kit	KIT0154387
Inline Blower Shell Kit	KIT0179549
External Blower Shell Kit	KIT0179547
CFM Reduction Kit	KIT0185752, KIT0185099

Recirculating Kit

Deflector	KIT0192763
Round carbon filters	KIT0192765



HUSH
SYSTEM



HEAT GUARD



PROFESSIONAL
PERFORMANCE



GREASE
COLLECTORS



SEAMLESS
LOOK



Perfect BBQ are the results of a good combination between a grill and a powerful exterior hood. Our **Outdoor** line includes stainless steel grade 304 weather resistant materials, LED light and extra depth for better fume capturing, and it is even extendable with a spacer.



CAPRI

WALL MOUNT

Model Numbers	ECP136SS, ECP148SS
Width	36", 48"
Depth	32"
Color / Material	Corrosion resistant stainless steel
Blower Performance	Internal or external 1200 CFM (4-speed) sold separately
Controls	Fully retractable rotating knobs with blue backlight
Lighting	36": 2 LED lights, 48": 4 LED lights
Filter	Dishwasher-safe, professional stainless steel angled baffle filters
Installation Type	Ducted installation only
Transition	10" round (top)
Sones	8.5 sones
Others	Stackable duct cover

KIT

External blower kit 1200 CFM 8" or 10" duct size compatible:	KIT0153054
Inline blower kit 1200 CFM 8" or 10" duct size compatible:	KIT0154387
1200 CFM Internal blower:	KIT0156655
Spacer kit 3" deep	36" : KIT0153304, 48" : KIT0153305
Ductcover kit 6"	36" : KIT0156637, 48" : KIT0156641
Ductcover kit 12"	36" : KIT0156645, 48" : KIT0156649



HEAT GUARD



PROFESSIONAL
PERFORMANCE



GREASE
COLLECTORS



SEAMLESS
LOOK



COMFORT

The **Comfort** line of range hoods feature highly popular Italian design equipped with a core set of features that delivers functionality, performance, easy installation system and overall a very high level of value.



ALLASIO

UNDERCABINET

Model Numbers	EAL330S1, EAL336S1
Width	30", 36"
Depth	20"
Color / Material	Stainless steel
Blower Performance	300 CFM (3-speed)
Controls	Backlit electronic push controls
Lighting	2 LED lights
Filter	Dishwasher-safe anodized aluminum mesh
Installation Type	Ducted or recirculating (kit sold separately)
Transition	3 1/4" x 10" top / Rear or 7" round top (sold separately)
Sones	5.2 sones

KIT	
Recirculating Kit	30" : KIT02178, 36" : KIT02179
Non return valve	30" , 36" : KIT02723
Upgrade Filter Kit	30" : GRI0131086A 36" : GRI0131087A



LED LIGHT



3X LAYER MESH FILTER



NEMI

UNDERCABINET

Model Numbers	ENM230S1, ENM236S1
Width	30", 36"
Depth	18 5/8"
Color / Material	Stainless steel
Blower Performance	280 CFM (3-speed)
Controls	Backlit electronic push button
Lighting	2 LED lights
Filter	Dishwasher-safe anodized aluminum mesh
Installation Type	Ducted or recirculating (kit sold separately)
Transition	3 1/4" x 10" top / Rear or 7" round top (sold separately)
Sones	4.9 sones

KIT	
Recirculating Kit	KIT0140997
Non return valve 7"	KIT02723
Duct transition 7"	KIT02722



LED LIGHT



3X LAYER MESH FILTER



TOBLINO 24

WALL MOUNT

Model Numbers	ETB424SS
Width	24"
Depth	19 11/16"
Color / Material	Stainless steel
Blower Performance	400 CFM (3-speed)
Controls	Backlit electronic push button
Lighting	2 LED lights
Filter	Dishwasher-safe anodized aluminum mesh
Installation Type	Ducted or recirculating (kit sold separately)
Installation Height	For ceiling heights 6'11" - 8'7" (ducted) 7'0" - 8'11" (recirculating)
Transition	6" round
Sones	5.9 sones

KIT	
Recirculating Kit	KIT0102875
Long chimney extension	KIT02785, KIT01935
CFM Reduction Kit	KIT0175561
Upgrade Filter Kit	GF04YB



LED LIGHT



3X LAYER MESH FILTER



TOBLINO

WALL MOUNT

Model Numbers	ETB430S3, ETB436S3
Width	30", 36"
Depth	19 11/16"
Color / Material	Stainless steel
Blower Performance	400 CFM (4 - speed)
Controls	Multiple backlight color touch controls
Lighting	2 LED lights (2 levels)
Filter	Dishwasher-safe anodized aluminum mesh
Installation Type	Ducted or recirculating
Installation Height	For ceiling heights 6'11" - 8'7" (ducted) 7'0" - 8'11" (recirculating)
Transition	6" round
Sones	5.9 sones

KIT	
Recirculating Kit	KIT0102875
Long chimney extension	KIT02785, KIT01935
CFM Reduction kit	KIT0175561
Upgrade Filter Kit	GF04YB



LED LIGHT



3X LAYER MESH FILTER



POTENZA

WALL MOUNT

Model Numbers	EPT430S3, EPT436S3
Width	30", 36"
Depth	19 5/8"
Color / Material	Stainless steel
Blower Performance	400 CFM (4 speed)
Controls	Multiple backlight color touch controls
Lighting	2 LED lights (2 levels)
Filter	Dishwasher-safe anodized aluminum mesh
Installation Type	Ducted or recirculating (kit sold separately)
Installation Height	For ceiling heights 6' 9"- 8'8" (ducted), 7'0"-9'0" (recirculating)
Transition	6" round
Sones	5.9 sones
KIT	
Recirculating Kit	KIT0102875
Non return valve	KIT0100315, KIT01609/1
Upgrade Filter Kit	GF04YB



LED LIGHT



3X LAYER MESH FILTER



FUSARO

UNDERCABINET

Model Numbers	EFS130S1
Width	30"
Depth	18 5/8"
Color / Material	Stainless steel
Blower Performance	190 CFM (2-speed)
Controls	Rocker Switch
Lighting	Incandescent lamp (not included)
Filter	Dishwasher-safe aluminum mesh
Installation Type	Ducted or recirculating (kit sold separately)
Transition	3 1/4" x 10" top / rear or 7" round top (sold separately)
Sones	4.1 sones
KIT	
Duct transition Kit	KIT02722
Backdraft damper Kit	KIT02723
Non return valve	KIT02724



3X LAYER MESH FILTER



BOLSENA

Wall Mount

Model Numbers	EBS630SS, EBS636SS
Width	30", 36"
Depth	19 11/16"
Color / Material	Stainless steel
Blower Performance	600 CFM (4-speed)
Controls	Multiple backlight color touch controls
Lighting	2 LED lights (2 levels)
Filter	Dishwasher-Safe, Stainless Steel Baffle Slot Filters
Installation Type	Ducted or recirculating (kit sold separately)
Transition	6" round (top)
Sones	6.8 sones
KIT	
Chimney extension Kit	KIT02762
Recirculating Kit	KIT02766



CFM REDUCTION



HUSH SYSTEM



SEMI BAFFLE FILTER



LED LIGHT



VOLTERRA 24

WALL MOUNT

Model Numbers	EVL424SS
Width	24"
Depth	19 5/8"
Color / Material	Stainless steel
Blower Performance	400 CFM (3-speed)
Controls	Backlit electronic push button
Lighting	2 LED lights
Filter	Dishwasher-safe anodized aluminum mesh
Installation Type	Ducted or recirculating (kit sold separately)
Installation Height	For ceiling heights 7'5" - 9'1" (ducted) 7'5" - 9'6" (recirculating)
Transition	6" round (top)
Sones	5.9 sones
KIT	
Recirculating Kit	KIT02766
Long chimney extension Kit	KIT02762
CFM reduction Kit	KIT0175561
Upgrade Filter Kit	GFO4YB



LED LIGHT



3X LAYER MESH FILTER



GUBBIO

UNDERCABINET

Model Numbers	EGB224SS
Width	24"
Depth	18 7/8"
Color / Material	Stainless steel
Blower Performance	250 CFM (3-speed)
Controls	Mechanical Slider
Lighting	2 LED lights
Filter	Diswasher-safe anodized aluminum mesh
Installation Type	Ducted or recirculating (kit sold separately)
Transition	3 1/4" x 10" top or rear
Sones	4.6 sones
KIT	
Optional recirculating Kit	KIT0140997
Non return valve 7"	KIT02723
Duct transition 7"	KIT02722



SEMI BAFFLE
FILTER



LED LIGHT



SORA

UNDERCABINET

Model Numbers	ESR430S1, ESR436S1
Width	30", 36"
Depth	23"
Color / Material	Stainless steel
Blower Performance	400 CFM (2-speed)
Controls	Rocker switches
Lighting	2 LED lights
Filter	Diswasher-safe stainless steel baffle slot
Installation Type	Ducted or recirculating (kit sold separately)
Transition	3 1/4" x 10" top or rear
Sones	5.9 sones
KIT	
Recirculating Kit	KIT02770
CFM reduction Kit	KIT0175561



SEMI BAFFLE
FILTER



LED LIGHT



ASTI

INSERT

Model Numbers	EAS422SS, EAS428S1
Width	22", 28"
Depth	10 3/4"
Color / Material	Stainless steel
Blower Performance	400 CFM (3-speed)
Controls	Backlit electronic push controls
Lighting	2 LED lights
Filter	Dishwasher-safe Anodized Aluminum Mesh
Installation Type	Ducted or recirculating (kit sold separately)
Transition	6" round (top)
Sones	5.9 sones
KIT	
Recirculating Kit	KIT02770
CFM reduction Kit	KIT0175561
30" Hood liner	28" : KIT02773
36" Hood liner	28" : KIT02774



LED LIGHT



3X LAYER MESH FILTER



ASTI 30

INSERT

Model Numbers	EAS430SS
Width	30"
Depth	10 3/4"
Color / Material	Stainless steel
Blower Performance	400 CFM (3-speed)
Controls	Mechanical push button
Lighting	2 LED lights
Filter	Stainless steel mesh
Installation Type	Ducted or recirculating (kit sold separately)
Transition	6" round (top)
Sones	5.9 sones
KIT	
Recirculating Kit	KIT02770
CFM reduction Kit	KIT0175561



LED LIGHT



3X LAYER MESH FILTER



TT UNDERCABINET

Model Numbers	ETT424S1, ETT430SS, ETT436SS
Width	24", 30", 36"
Depth	11" - 17"
Color / Material	Stainless steel
Blower Performance	400 CFM (3-speed)
Controls	Hidden electronic touch controls
Lighting	2 LED lights
Filter	Dishwasher-safe anodized aluminum mesh
Installation Type	Ducted or recirculating (kit sold separately)
Transition	6" round (top)
Sones	5.9 sones
KIT	
Recirculating Kit	CFC0038668
Backdraft damper Kit	KIT02748
6" round plastic deflector	DF01EA



LED LIGHT



3X LAYER
MESH FILTER



BELLAGIO UNDERCABINET

Model Numbers	EBL430S1, EBL436S1
Width	30", 36"
Depth	20"
Color / Material	Stainless steel
Blower Performance	430 CFM (3-speed + boost) with CRS System to limit CFM
Controls	Multiple backlight color touch controls
Lighting	2 LED lights
Filter	Dishwasher-safe, anodized aluminum mesh
Installation Type	Ducted or recirculating (kit sold separately)
Transition	3 1/4" x 10" top / rear or 7" round top (sold separately)
Sones	6.1 sones
KIT	
Recirculating Kit	30": KIT02178, 36": KIT02179
Valve damper Kit	KIT02723



CFM
REDUCTION



LED LIGHT



3X LAYER
MESH FILTER



HEAT GUARD

ELICA'S EXCLUSIVE FEATURES



STOP & GO

COOKTOP

Pause all the features in use on the hob, to later restore them back to what was previously set.



BRIDGE ZONES

COOKTOP

Homogeneous cooking: cooktop surface adapts to the type of pot being used.



POT DETECTOR

COOKTOP

Turns off cooktop when zone is not being used and turns on when pot is placed.



WARMING MODE

COOKTOP

Designed for a low temperature cooking, ideal for heating liquids without worrying about the over-heating. Keeps prepared food warm, while other foods are still cooking.



AIRMATIC

COOKTOP

Once the Airmatic function is activated, the product's intelligent sensor system detects the quantity - but above all the quality - of the fumes produced by the type of cooking and sets the most suitable aspiration power.



EASY TO MAINTAIN

COOKTOP

All the components, such as the grease and odour filters, can be easily accessed and removed so they can be washed or rapidly replaced. Making it a low-maintenance product.



TIMER

COOKTOP

Set the cooking time and start the countdown. At the end the cooking area will be automatically switched off and a beep will sound. You can set independent timers on more than one area at the same time.



DELAY SWITCH OFF

COOKTOP

A smart timer feature allows you to set the automatic switch-off of the product after a predetermined time. Delayed shutdown may be used in order to leave the hood on even after cooking, so to fully remove stubborn odors and residual humidity.



RECALL

COOKTOP

If the hob is accidentally switched off, the Recall feature is activated within 6 seconds: just one touch is all it takes to reset all of the previously set features, on all cooking zones and the extraction system.



TEMPERATURE MANAGER

COOKTOP

The cooktop can be used with three programs (42, 72 or 92 degrees) to always ensure a perfect cooking.



CHILD LOCK

COOKTOP

This avoid that the cooking or extraction areas are not accidentally switched on. The function can be enabled when the product is switched on but the cooking areas and extraction are switched off.



DEEP SILENCE

An exclusive sound deadening technology that utilizes a patented filter design, which substantially eliminates air turbulence and ultimately reduce sound levels.



REMOTE CONTROL

ADA compliant Remote Control provides added convenience to the user, as well as full function access for those with limited mobility.



TOUCH CONTROL

Multifunction electronic touch control behind sleek black glass and illuminate soft blue when activated.



LED LIGHT

Expected lifetime of over 20,000 hours, represents the most remarkable advantage of LED light bulbs.



TUNE WHITE

Choose preferred shade of white to create the right atmosphere. The Kelvin degrees regulation starts from a very warm tone up to a cold color.



HEAT GUARD

Senses extreme temperatures (>158 °F) and automatically adjusts the blower speed to HIGH.

ELICA'S EXCLUSIVE FEATURES



Air filter that can be regenerated and keeps characteristics for up to 3 years, avoiding unnecessary replacements and waste. It has level of efficiency of around 60%.



CLEAN FILTER ALARM

When activated, your hood will emit a *beep* signal to let you know when is time to clean your filters. For some models, an intermittent light will remain active until cleaning filter action is completed. See instructions manual to activate feature.



REPLACE FILTER ALARM

When activated, your hood will emit a *beep* signal let you know when is time to replace the carbon filters. See instructions manual to activate feature.



SEMI BAFFLE FILTER

A baffle shapes stainless steel filter with mesh backing allows air to pass but blocks grease, which drops into the high capacity baffle cavities.



SIX LAYER MESH FILTER

Aluminum mesh filters are step above competition, featuring triple layered, anodized aluminum that is woven into a highly dense mesh.



PERIMETER ASPIRATION

The technology draws air through narrowed channel around a face plate, which increases suction, without increasing blower speed or energy consumption.



GREASE COLLECTORS

Professional grade Stainless Steel Baffle Filters designed for high airflow cooking, trap volumes of grease which is collected in trays for easy removal and cleaning.



CFM REDUCTION

CFM Reduction System: enables user to reduce directly the maximum blower CFM, to meet local code requirements.



REAR OUTLET INSTALLATION

The Elica Easy Mounting System makes ducting out through the rear wall behind the hood canopy possible for this style hood.



ELICA EASY MOUNTING

Elica's patented Easy Mounting System enables hood installation to be done in 6 easy steps, without ladders, without the added cost of purchasing a specialized duct transition, and without the added cost of purchasing a duct cover to hide ducting connection points.



UNIQUE MATERIALS

Products designed with special materials and finishes with great aesthetic impact but also with practical and durable characteristics, perfect for the kitchen.



PROFESSIONAL PERFORMANCE

Very high performances for models with aspiration capacity between 600 and 1200 CFM's. The ideal complement of PRO ranges.



TOP PERFORMANCE

High fume capturing capacity with an average aspiration range of 600 CFM's with low noise levels (1.2-1.7 sonas at working speed).



SEAMLESS LOOK

Heavy gauge stainless steel seamless construction that delivers superior quality and Italian craftsmanship.



HUSH SYSTEM

Exclusive sound deadening technology that effectively reduces sound levels.



TOTAL INTEGRATION

Always more popular in today's modern kitchen.

ELICA 'S EXCLUSIVE FEATURES



OPEN
DOOR ALARM

REFRIGERATION

To save energy and ensure proper preservation of your beverages, all Elica Undercabinet Refrigeration products come with a Door-Open Alarm, that will repeatedly beep when the door has been left ajar for longer than 5 minutes.



ECO-MODE

REFRIGERATION

Sustainable and environmentally friendly: Eco-Mode will maintain optimum interior temperature, while saving energy consumption turning the lights OFF.



EPC
TECHNOLOGY

REFRIGERATION

Elica Perfect Climate with double air duct cooling system. Meet Elica's Intelligent System with sensors that deliver precise and consistent temperature & humidity evenly throughout the entire compartment, so that all stored bottles are preserved under the same conditions.



CONCEALED
HINGE

REFRIGERATION

Door hinges are hidden within the door and do not extend above the top of the door, allowing for a cleaner, more refined appearance, plus enabling the refrigerator to fit tighter within cabinetry.



HIGH EFFICIENCY
CARBON FILTERS

REFRIGERATION

Elica's advanced Carbon Filters remove odors and other gaseous pollutants from the air, ensuring fresh and pure environment.



QUIET
OPERATION

REFRIGERATION

Elica offers a speed-controlled motor, reducing exterior sound levels, while offering high ventilation performance to keep constant interior temperature and dampening any possible vibration that could disturb the preservation of wine and beverages.

CONTACT INFO

TECHNICAL SUPPORT & WARRANTY SERVICE:

USA & CANADA - Western Provinces

888 732 8018

elica@servicepower.com

CANADA - Ontario Province

888 651 2534

service@agintl.qc.ca

CANADA - Quebec & Atlantic Provinces

800 463 0119

service@ateliersgpaquette.com

PARTS, KITS AND ACCESSORIES:

For USA and Canada:

Contact: Encompass

800 432 8542

encompass.com/brands/eli/Elica

or

Repair Clinic

800-269-2609

Don't forget to Register your Product to earn a Warranty Extension



www.elica.com

