

MEZZANO



WALL-MOUNT

ASPIRE SERIES

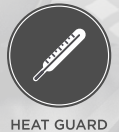
Dimensions

30"W x 19 11/16"D x 1 9/16"H
30"W x 19 11/16"D x 1 9/16"H

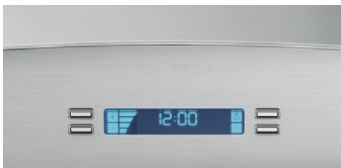
Models

EMZ630S2 Mezzano 30" Stainless
EMZ636S2 Mezzano 36" Stainless

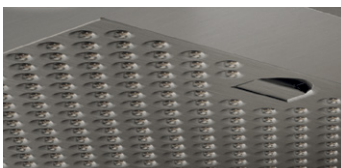
Special features



halogen lamps



multi-function electronic controls with lcd display



stainless steel micro hole filters



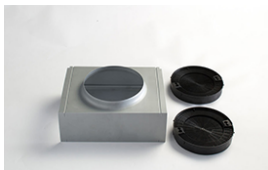
With a "minimalist" hood design that's only 2" high, the stainless steel Mezzano is in step with today's world of flat-panel TVs and other futuristic products with clean, architectural lines. Mezzano features include a powerful 600 CFM blower, halogen lighting with 2 light intensities, stainless steel microhole filters and multi-function electronic controls with LCD display that deliver convenience and safety.

Designed for standard ducted installation, Mezzano can also be installed as a recirculating system using the Recirculating Kit, available as an accessory.

FEATURES

Size (in) & Type Finish	30" or 36" Wide Wall-Mount Chimney Stainless Steel
Controls	Multi-function electronic with LCD display
Illumination	2, 40 Watt Halogen Lamps, 2 Light Intensities (bulbs included)
Installation Type	Ducted or Recirculating Installation Recirculating Kit Sold Separately
Blower Type	600 CFM, 4-Speed Internal
Blower Performance	Speed 1, 160 CFM, 1.7 Sones Speed 2, 280 CFM, 3.3 Sones Speed 3, 475 CFM, 6.0 Sones Speed 4, 600 CFM, 8.2 Sones
Filter Type	Dishwasher-Safe, Stainless Steel Micro Hole (2 w/ 30", 3 w/ 36")
Telescopic Chimney Extension	For heights 7'5" - 10'0" (ducted) For heights 7'9" - 10'4" (recirculating)
Duct Transition	6" Round with Back Draft Damper (top)
Electrical	120V-60Hz 490 Watts at 4.1 Amps
Warranty	2 Year Parts & Labor, In-Home Service

ACCESSORIES



Optional Recirculating Kit for 30" and 36"

CODE: KIT02721
MODEL: KIT02721

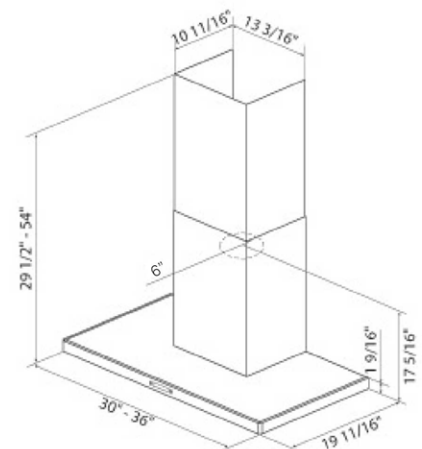


Optional Long Chimney Extension Kit

Reaches 8'5" - 12'0" (ducted)
Reaches 8'9" - 12'4" (recirculating)

CODE: KIT02785
MODEL: EXXCEK07

LINE DRAWING



CONSUMABLE PARTS

Replacement Grease Filter (1)

CODE: GFO4YB

Replacement Carbon Filter (1)

CODE: KIT02667

Replacement Light Bulb (1)

CODE: 2006BH

Consumable parts are sold in units of one (1). Order accordingly.

SPECIAL FEATURES



Elica CRS:

CFM Reduction System (CRS), is an exclusive feature to Elica hoods, which enables the installer to reduce the maximum blower CFM, to meet local code requirements.



Elica Heat Guard:

A safety feature that protects the hood and cabinetry from excessive heat, by sensing extreme temperatures (>158 degrees) and will automatically adjust the blower speed to HIGH. Blower speed will automatically adjust back once temperatures drop to a safe level.