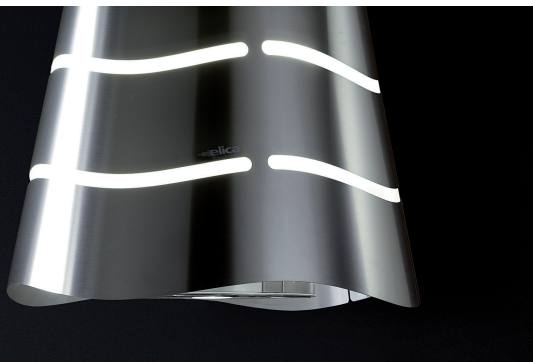


# WAVE

ISLAND



## COLLECTION SERIES



Wave filters light, gently through undulating spaces cut into a stainless steel surface; a minimalist style light source, with a simple shape enriched by high-quality materials and a subtle radiance. Much more than a stylish stainless light fixture, Wave is actually a highly efficient range hood. All possible due to Elica's patented Evolution system.

Wave offers a 350 CFM blower, halogen lighting and a high efficiency filter system that effectively removes cooking grease, heat, smoke and odours, with only a whisper of sound (.3 sones at speed 1) and does all this without dominating the kitchen or obstructing the glorious views outside.

### MODELS

EWV320SS Wave 20" Stainless

### DIMENSIONS

(19 <sup>3</sup>/<sub>4</sub>"W x 19 <sup>3</sup>/<sub>4</sub>"D x 16 <sup>7</sup>/<sub>8</sub>"H)



Halogen Lamps



Electronic Push Button Controls



Anodized Aluminum Mesh & Long Life Carbon Filters

## FEATURES

Size (in) & Type Finish	20" Wide Island/Wall-Mount Stainless Steel
Controls	Electronic Push Button
Illumination	2, 20 Watt Halogen Lamps, 1 Light Intensity (bulbs included) 3, 40 Watt Incandescent Ambient Lamps, 1 Light Intensity (bulbs included)
Installation Type	Recirculating Installation Only
Blower Type	350 CFM, 3-Speed Internal
Blower Performance	Speed 1, 110 CFM, 0.3 Sones Speed 2, 220 CFM, 2.1 Sones Speed 3, 350 CFM, 3.8 Sones
Filter Type	1, Dishwasher-Grease Aluminum & 1 Long Life Carbon (both included)
Ceiling Mounting Height	For heights 6'10" - 11'8"
Electrical	120V-60Hz 320 Watts at 1.7 Amps
Warranty	2 Year Parts & Labor, In-Home Service

## ACCESSORIES



Optional Wall Mounting Bracket Kit

CODE: KIT02663  
MODEL: EXXWBK01



Optional High Ceiling Extension Kit  
Range 6'10" - 23' 5"

CODE: KIT01921  
MODEL: EXXEKSS

## CONSUMABLE PARTS

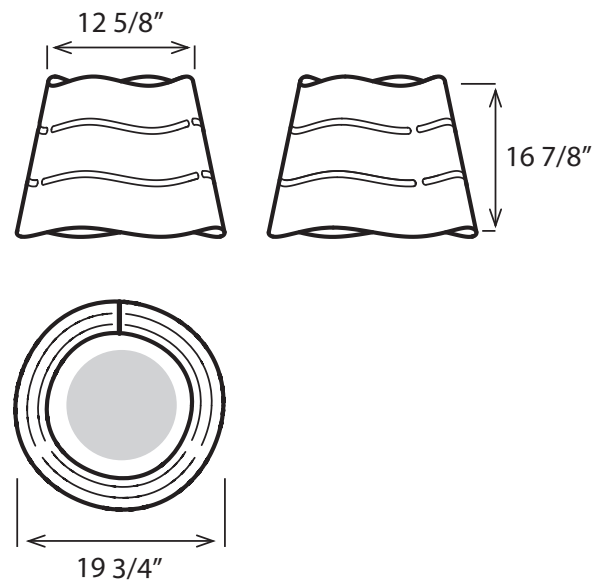
Replacement Grease Filter (1)  
CODE: GRI0009219A

Replacement Carbon Filter (1)  
CODE: F00439

Replacement Light Bulb (1)  
CODE: 2006BP (Flood)  
CODE: 2006BL (Ambient)

Consumable parts are sold in units of one (1). Order accordingly.

## LINE DRAWING



## SPECIAL FEATURES



**Elica Evolution:** A super-compact ventilation system comprised of miniaturized / finely engineered components, which provide a platform for creating artistically interesting shapes that provide a splash of design and decoration for the room. Not just a pretty face, the patented Evolution system is a highly effective ventilation system, that won't over power the kitchen or disrupt the glorious views to the outdoors.