

MEZZANO

WALL-MOUNT



ASPIRE



With a “minimalist” hood design that’s only 2” high, the stainless steel Mezzano is in step with today’s world of flat-panel TVs and other futuristic products with clean, architectural lines. Mezzano features include a powerful 600 CFM blower, halogen lighting with 2 light intensities, stainless steel microhole filters and high-tech multi-function LCD controls that deliver convenience and safety. Designed for standard ducted installation, Mezzano can also be installed as a recirculating system using the Recirculating Kit, available as an accessory.



Halogen Lamps



Multi-Function Electronic Touch Controls



Stainless Steel Micro Hole Filters

MODELS

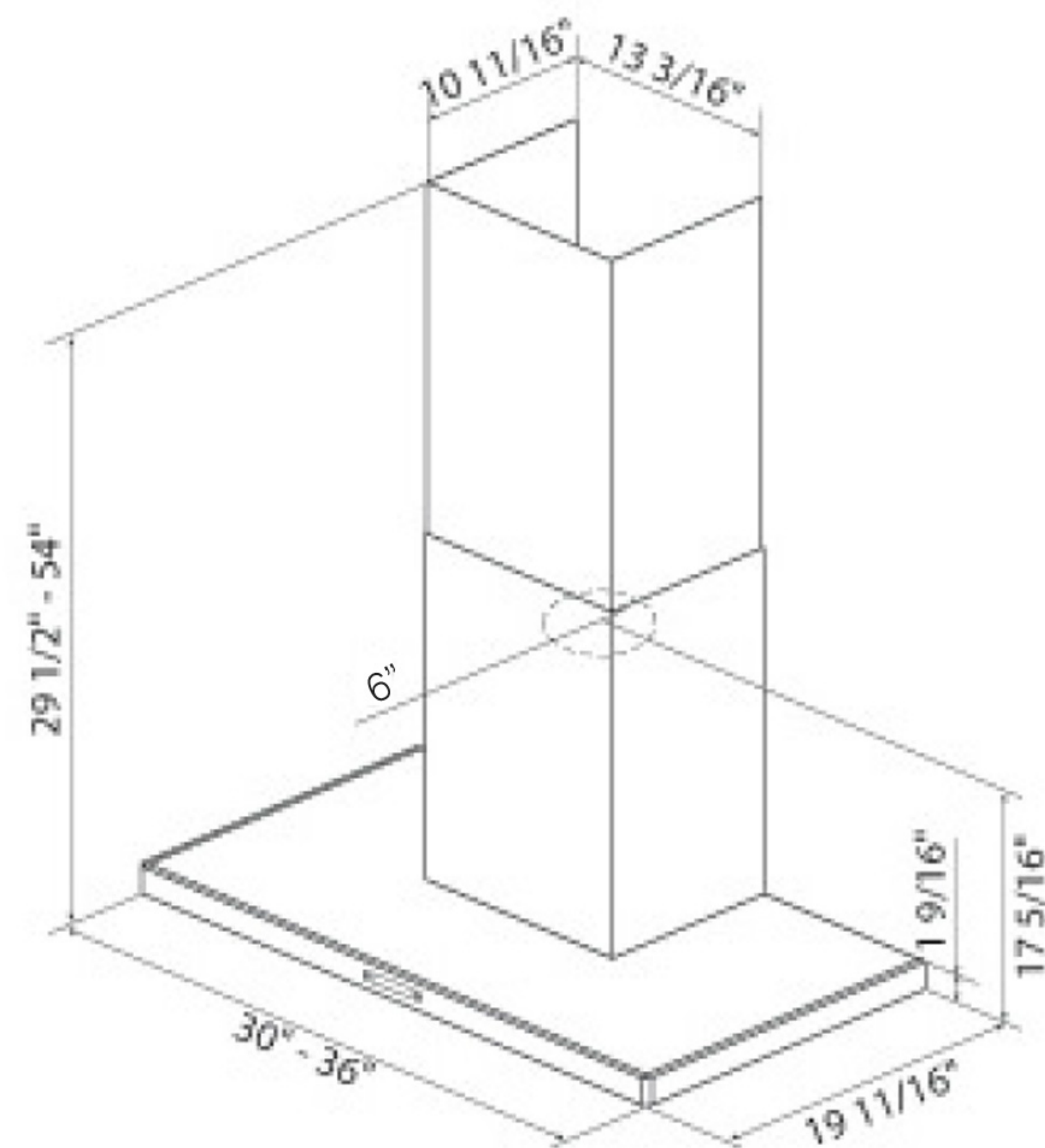
- EMZ630S2 Mezzano 30” Stainless
- EMZ636S2 Mezzano 36” Stainless

DIMENSIONS

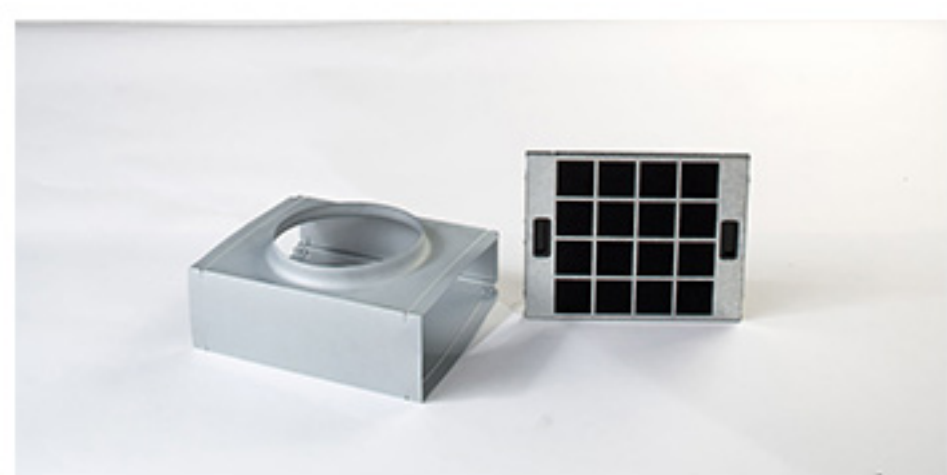
- (30”W x 19 11/16”D x 1 9/16”H)
- (36”W x 19 11/16”D x 1 9/16”H)

FEATURES

Size (in) & Type Finish	30" or 36" Wide, Wall-Mounted Chimney Hood Stainless Steel
Controls	Multi-Function Electronic Touch with LCD display
Illumination	2, 40 Watt Halogen Lamps (Bulbs Included) 2 Light Intensities
Installation Type	Ducted or Recirculating Installation Recirculating Kit Sold Separately
Blower Type	600 CFM, 4-Speed Internal
Blower Performance	Speed 1, 160 CFM, 1.4 Sones Speed 2, 280 CFM, 3.2 Sones Speed 3, 475 CFM, 6.0 Sones Speed 4, 600 CFM, 8.2 Sones
Filter Type	Stainless steel microhole (2 w/ 30", 3 w/ 36")
Telescopic Chimney Extension	For heights 7'5" to 10' (Ducted)
Duct Transition	6" Round (Back Draft Damper Included)
Electrical	120V - 60 Hz 490 Watt at 4.1 Amps



ACCESSORIES



Optional
recirculating Kit for
30" and 36" unit

CODE: KIT02199
MODEL: EXXRCK05



Optional
Long Chimney
Extension Kit for
9'0" - 12'0"

CODE: KIT01935
MODEL: EXXCEK07