

PILATO
WALL-MOUNT



ASPIRE SERIES



The rounded front, beautifully sloping angles and stainless steel finish of Pilato make a striking visual statement. Available in 30" or 36" widths, Pilato features include a powerful 600 CFM blower, halogen lighting with 2 light intensities, dishwasher-safe stainless steel micro-hole filters and multi-function electronic controls with LCD display that deliver convenience and safety.

Designed for standard ducted installation, Pilato can also be installed as a recirculating system using the Recirculating Kit, available as an accessory.

MODELS

- EPL630S1 Pilato 30" Stainless
- EPL636S1 Pilato 36" Stainless

DIMENSIONS

- (30"W x 19 11/16"D x 10 1/4"H)
- (36"W x 19 11/16"D x 10 1/4"H)



Halogen Lamps



Multi-function electronic controls with LCD display

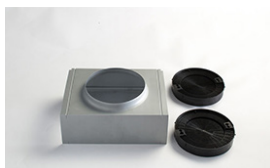


Stainless Steel Micro Hole Filters

FEATURES

Size (in) & Type Finish	30" or 36" Wide Wall-Mount Chimney Stainless Steel
Controls	Multi-function electronic controls with LCD display
Illumination	2, 40 Watt Halogen Lamps, 2 Light Intensities (bulbs included)
Installation Type	Ducted or Recirculating Installation Recirculating Kit Sold Separately
Blower Type	600 CFM, 4-Speed Internal
Blower Performance	Speed 1 , 160 CFM, 1.7 Sones Speed 2 , 280 CFM, 3.3 Sones Speed 3 , 475 CFM, 6.0 Sones Speed 4 , 600 CFM, 8.2 Sones
Filter Type	Dishwasher-Safe, Stainless Steel Micro Hole (2 w/ 30", 3 w/ 36")
Telescopic Chimney Extension	For heights 7'11" - 9'2" (ducted) For heights 7'11" - 9'6" (recirculating)
Duct Transition	6" Round with Back Draft Damper (top)
Electrical	120V-60Hz 490 Watts at 4.1 Amps
Warranty	2 Year Parts & Labor, In-Home Service

ACCESSORIES



Optional Recirculating Kit for 30" and 36" Units

CODE: KIT02766
MODEL: EXXRCK09



Optional Long Chimney Extension Kit
Reaches 8'11" - 11'4" (ducted)
Reaches 9'3" - 11'8" (recirculating)

CODE: KIT02762
MODEL: EXXCEK05

CONSUMABLE PARTS

Replacement Grease Filter (1)
CODE: GF04YB

Replacement Carbon Filter (1)
CODE: KIT02667

Replacement Light Bulb (1)
CODE: 2006BH

Consumable parts are sold in units of one (1). Order accordingly.

SPECIAL FEATURES



Elica Heat Guard: A technology that protects the hood and cabinetry from excessive heat, by sensing extreme temperatures and automatically adjusting blower speeds accordingly.



Elica CRS: CFM Reduction System (CRS), is an exclusive feature to Elica hoods, which enables the installer to reduce the maximum blower CFM, to meet local code requirements.

LINE DRAWING

