

# SALICE ISLAND



## ASPIRE SERIES

Salice conveys understated elegance with a gently tapered canopy that measures only 5" tall, which opens up the kitchen for entertainment and conversation. Available in 36" and 42" widths, Salice features a powerful 600 CFM blower, halogen lighting with 2 light intensities, stainless steel microhole filters and multi-function electronic controls with LCD display that deliver convenience and safety.

Designed for ducted installation, Salice can also be installed as a recirculating system using the Recirculating Kit, available as an accessory.



### MODELS

ESL636S2 Salice 36" Stainless  
ESL642S2 Salice 42" Stainless

### DIMENSIONS

(36"W x 27"D x 5"H)  
(42"W x 27"D x 5"H)



Halogen Lamps



Multi-function electronic controls with LCD display

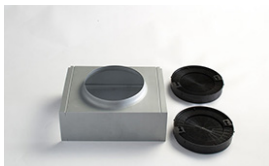


Stainless Steel Micro Hole Filters

FEATURES

<b>Size (in) &amp; Type Finish</b>	36" or 42" Wide Island Stainless Steel
<b>Controls</b>	Multi-function electronic controls with LCD display
<b>Illumination</b>	4, 40 Watt Halogen Lamps, 2 Light Intensities (bulbs included)
<b>Installation Type</b>	Ducted or Recirculating Installation Recirculating Kit Sold Separately
<b>Blower Type</b>	600 CFM, 4-Speed Internal
<b>Blower Performance</b>	Speed 1, 180 CFM, 1.6 Sones Speed 2, 300 CFM, 3.5 Sones Speed 3, 470 CFM, 6.5 Sones Speed 4, 600 CFM, 8.7 Sones
<b>Filter Type</b>	3, Dishwasher-Safe, Stainless Steel Microhole Filters
<b>Telescopic Chimney Extension</b>	For heights 7'9" - 9'8" (ducted) For heights 8'0" - 10'0" (recirculating)
<b>Duct Transition</b>	6" Round with Back Draft Damper (top)
<b>Electrical</b>	120V-60Hz 530 Watts at 4.4 Amps
<b>Warranty</b>	2 Year Parts & Labor, In-Home Service

ACCESSORIES



Optional Recirculating Kit for 36" and 42" Units

CODE: KIT02665  
MODEL: KIT02665



Optional Long Chimney Extension Kit  
Reaches 9'0" - 12'0" (ducted)  
Reaches 9'4" - 12'4" (recirculating)

CODE: KIT0100317  
MODEL: EXXRCK06

CONSUMABLE PARTS

Replacement Grease Filter (1)  
CODE: GF04YB

Replacement Carbon Filter (1)  
CODE: KIT02667

Replacement Light Bulb (1)  
CODE: 2006BH

Consumable parts are sold in units of one (1). Order accordingly.

SPECIAL FEATURES



**Elica Heat Guard:** A technology that protects the hood and cabinetry from excessive heat, by sensing extreme temperatures and automatically adjusting blower speeds accordingly.



**Elica CRS:** CFM Reduction System (CRS), is an exclusive feature to Elica hoods, which enables the installer to reduce the maximum blower CFM, to meet local code requirements.

LINE DRAWING

