

# VARNA

WALL-MOUNT



## ASPIRE SERIES



The clean lines, beautifully sloping angles and stainless steel finish of Varna make a striking visual statement. Available in 30" or 36" width, Varna features include a powerful 600 CFM blower, halogen lighting with 2 light intensities, dishwasher-safe stainless steel microhole filters and multi-function electronic controls with LCD display that deliver convenience and safety.

Designed for standard ducted installation, Varna can also be installed as a recirculating system using the Recirculating Kit, available as an accessory.

### MODELS

- EVR630S1 Varna 30" Stainless
- EVR636S1 Varna 36" Stainless

### DIMENSIONS

- (30"W x 19 11/16"D x 10 1/4"H)
- (36"W x 19 11/16"D x 10 1/4"H)



Halogen Lamps



Multi-function electronic controls with LCD display

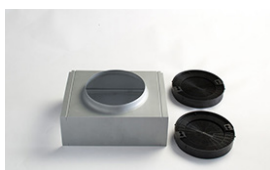


Stainless Steel Micro Hole Filters

## FEATURES

<b>Size (in) &amp; Type Finish</b>	30" or 36" Wide Wall-Mount Chimney Stainless Steel
<b>Controls</b>	Multi-function electronic controls with LCD display
<b>Illumination</b>	2, 40 Watt Halogen Lamps, 2 Light Intensities (bulbs included)
<b>Installation Type</b>	Ducted or Recirculating Installation Recirculating Kit Sold Separately
<b>Blower Type</b>	600 CFM, 4-Speed Internal
<b>Blower Performance</b>	Speed 1 , 160 CFM, 1.7 Sones Speed 2 , 280 CFM, 3.3 Sones Speed 3 , 475 CFM, 6.0 Sones Speed 4 , 600 CFM, 8.2 Sones
<b>Filter Type</b>	Dishwasher-Safe, Stainless Steel Micro Hole (2 w/ 30", 3 w/ 36")
<b>Telescopic Chimney Extension</b>	For heights 7'11" - 9'2" (ducted) For heights 7'11" - 9'6" (recirculating)
<b>Duct Transition</b>	6" Round with Back Draft Damper (top)
<b>Electrical</b>	120V-60Hz 550 Watts at 4.6 Amps
<b>Warranty</b>	2 Year Parts & Labor, In-Home Service

## ACCESSORIES



Optional Recirculating Kit for 30" and 36" Units

CODE: KIT02766  
MODEL: EXXRCK09



Optional Long Chimney Extension Kit  
Reaches 8'11" - 11'4" (ducted)  
Reaches 9'3" - 11'8" (recirculating)

CODE: KIT02762  
MODEL: EXXCEK05

## CONSUMABLE PARTS

Replacement Grease Filter (1)  
CODE: GF04YB

Replacement Carbon Filter (1)  
CODE: KIT02667

Replacement Light Bulb (1)  
CODE: 2006BH

Consumable parts are sold in units of one (1). Order accordingly.

## SPECIAL FEATURES



**Elica Heat Guard:** A technology that protects the hood and cabinetry from excessive heat, by sensing extreme temperatures and automatically adjusting blower speeds accordingly.



**Elica CRS:** CFM Reduction System (CRS), is an exclusive feature to Elica hoods, which enables the installer to reduce the maximum blower CFM, to meet local code requirements.

## LINE DRAWING

