

# INCA SMART SS

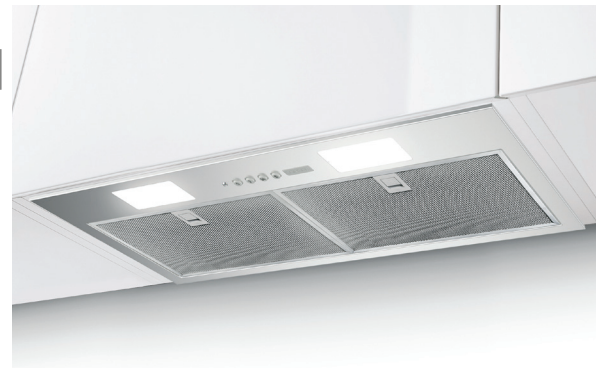
INSERT

## STUNNING, SLEEK VENTILATION

The new and improved Inca Smart power pack is perfect for the homeowner who wants a built in range hood that fits into most cabinets and most budgets. This restyled Inca Smart Stainless is now available in 240, 400, 600 CFM with LED lighting.

## AVAILABLE MODELS

Model #	FUN #	Size / Color	Motor Class (CFM)
<b>INSP28SS240</b>	305.0598.089	28" Stainless Steel	240 CFM
<b>INSP28SS400</b>	305.0598.086	28" Stainless Steel	400 CFM
<b>INSP28SS600</b>	305.0598.087	28" Stainless Steel	600 CFM

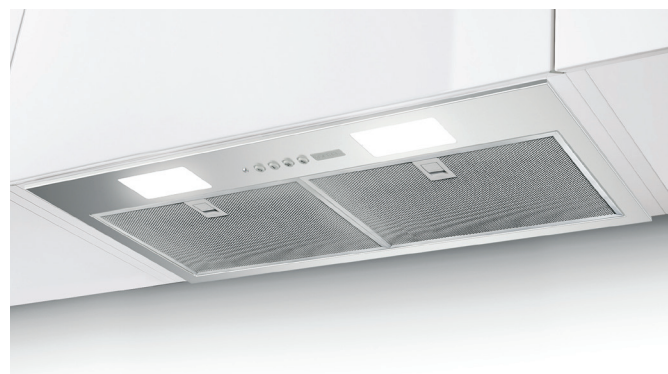


BUILT-IN TO THE CABINETRY, THIS RANGE HOOD GIVES YOU PLENTY OF UNOBSTRUCTED COOKING SPACE. THE INCA SMART HAS BOTH A RANGE HOOD AND A **STUNNING** LIGHT FEATURE TO ILLUMINATE THE AREA BELOW WITH **MODERN** LED LIGHTS.



# INCA SMART SS

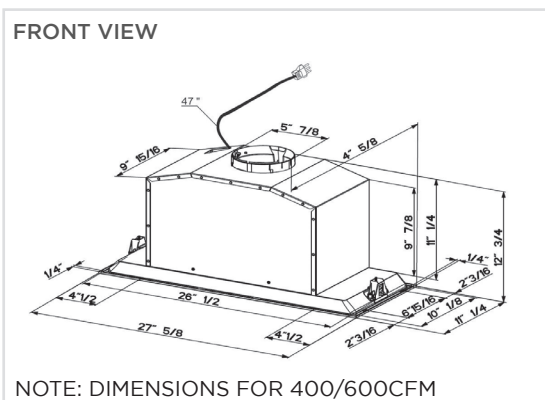
INSERT



MODEL	FUN #	SIZE/MATERIAL	MOTOR CLASS
<b>INSP28SS240</b>	305.0598.089	28" Stainless Steel	240 CFM
<b>INSP28SS400</b>	305.0598.086	28" Stainless Steel	400 CFM
<b>INSP28SS600</b>	305.0598.087	28" Stainless Steel	600 CFM

FEATURES		PERFORMANCE		ACCESSORIES
<b>Dimensions</b>		<b>Motor</b>		<b>LINE30ST</b> 30" SS Liner (16 - 17 7/8" D)
Cabinet Cut Out	26 5/8" W x 10 1/4" D	No. of Fan Speeds	4	<b>LINE36ST</b> 36" SS Liner (16 - 17 7/8" D)
Height Inside Cabinet	7 1/16" -28SS240 12 3/4" -28SS400/600	Motor Class	240/400/600	<b>FILTER4</b> Charcoal Filter Kit (240 CFM Only)
<b>Ducting</b>		<b>Energy-Efficient Motor</b>		<b>FILTER1</b> Charcoal Filter Kit (400/600 CFM Only)
Type	Ducted/ Recirculating with FILTER1/FILTER1LL2 (SS400/600) FILTER4 (SS240)	<b>Display</b>		<b>FILTER1LL2</b> Long Lasting Charcoal Filter Kit (400/600 CFM Only)
Duct Size	Top 6" Round - SS400/600 Top 5" Round -SS240	Controls	Electronic with LED	<b>WIREBOX</b> Fixed Wiring Box (400/600 CFM Only)
<b>Lighting</b>		Intensive Speed	10 Minutes	<b>LINSPT301228</b> 30" Self Supporting Liner (17 1/2" - 20 1/2" D)
Type	Energy-Efficient LED	<b>Other</b>		<b>LINSPT361228</b> 36" Self Supporting Liner (17 1/2" - 20 1/2" D)
# of Bulbs	Two- 4 Watt - 1 level	ADA Compliant	No	
<b>Grease Filters</b>		Power Cord Included	Yes	
Filter Type	Mesh			
Dishwasher Safe	Yes			
<b>Easy Snap Clip Installation</b>				
	Clips Included			

## DIMENSIONAL DRAWINGS



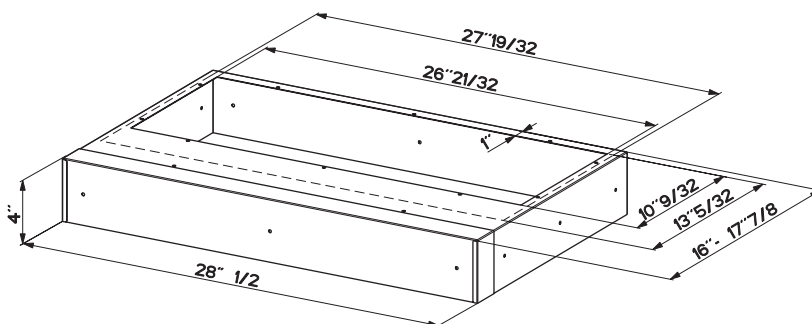
Rev5 323

800 Aviation Parkway, Smyrna, TN 37167 (508) 358-5353 | [www.faberonline.com](http://www.faberonline.com)

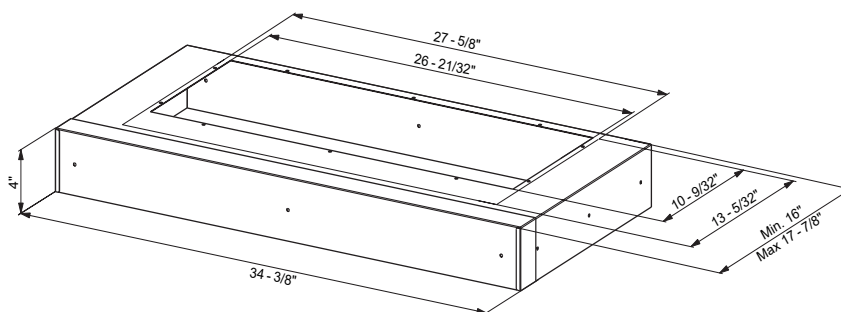
## LINER SPECIFICATIONS

Liners are stainless steel kits that are optional for cabinet insert hoods. They create a metal perimeter to “line” the wood below the range hood with metal. They create a more finished look and move the range hood up creating additional capture area. In some cases, a liner may be required by local code if the cabinet starts at below 30” off the stove (check local building codes). All liners are adjustable in depth with a telescoping frame.

### LINE30ST - USE WITH INSP28 ONLY FOR 30” WIDE CABINETS

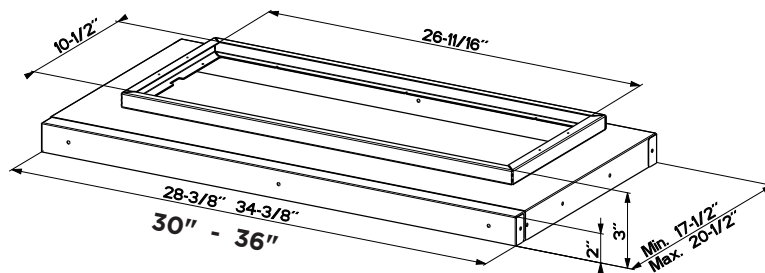


### LINE36ST - USE WITH INSP28 ONLY FOR 36” WIDE CABINETS



### LINSPT301228 / LINSPT361228 SELF SUPPORTING LINER USE WITH INSP28 ONLY

The liner is installed with screws against the walls of the cabinet, aligned with the cabinet bottom. The hood is installed onto the thick metal interior portion of the liner and is fully supported by the liner.



Rev5 323