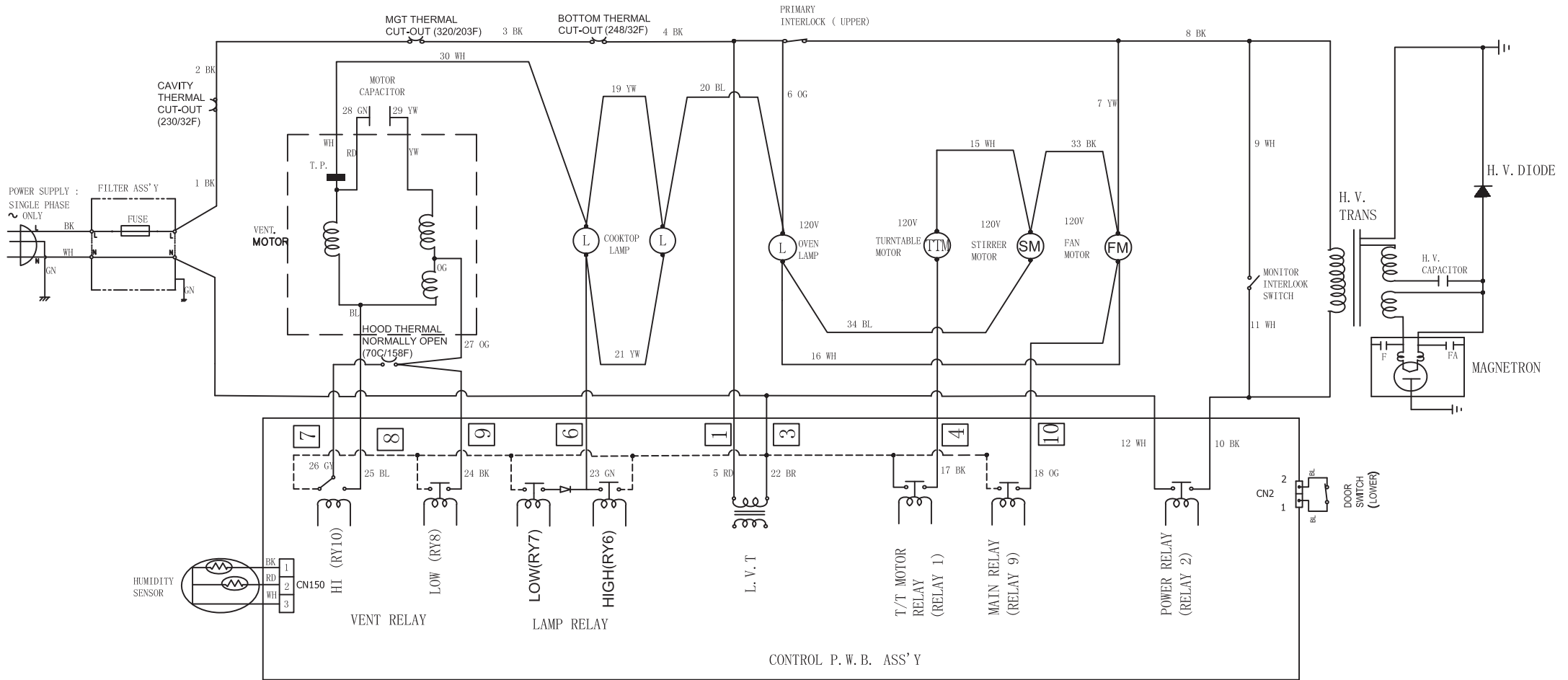


261800316100-EM048KIU. IV-电路图-1.7 DB-USA

客版英文, 普通双胶纸, 210*297MM

(需折叠, 折叠方式同261800311305) (11-14版本)



NOTE: For models - FGMV175QW, FGMV175QF, FGMV175QQ, FGMV175QM, FGMV175QB

[CONDITION]	OL : OVEN LAMP	OG : ORANGE	BR : BROWN
DOOR : CLOSED	FM : FAN MOTOR	YW : YELLOW	WH : WHITE
COOK : OFF	FTM : TURNABLE MOTOR	RD : RED	BK : BLACK
	SM : STIRRER MOTOR	BL : BLUE	GY : GREY
	CL : COOKTOP LAMP	GN : GREEN	PK : PINK

HOOD THERMAL NORMALLY OPEN(70C/158F):It's normally open, until the temperature is over than 158F, it's ON.