

30" OVERLAY BUILT-IN FRIDGE

FM4BM30FBI

CONTROL

Cooling system	Dual Evaporator / Frost Free
Control system	Electronic

CAPACITIES

Total net volume, cu. ft. (liters)	16 (453)
Fresh food net volume, cu. ft. (liters)	11.5 (326)
Freezer net volume, cu. ft. (liters)	4.5 (127)

FRIDGE FEATURES

Air Filtration	No
Interior filtered water dispenser	No
Control Display	LED
Automatic Defrost	Yes
Interior Lighting	LED - Side walls, ceiling
Spill-proof Shelves	3
Crispers	1
Extended preservation drawer	1
Door Bins	3 (2+1 gallon rack)
Compressor	Variable speed with inverter (VCC)
Fan Assisted Cooling	Yes
Air Duct Cover	White

FREEZER FEATURES

Automatic Defrost	Yes
Large Freezer Drawer	1
Metal Interior Freezer Drawer	1

TECHNICAL INFORMATION

Dedicated Circuit, V/Amps	120/15
Supply voltage, V/Hz	120/60
Rated Current, Amps	2
Noise level, dB(A)	43

DIMENSIONS

Product H x W x D, in (mm)	83-1/4 x 29-11/16 x 23-5/8 (2115 x 754 x 600)
Package H x W x D, in (mm)	90-9/16 x 32-5/16 x 26-3/8 (2300 x 820 x 678)
Product weight, lbs (kg)	496 (225)
Packed weight, lbs (kg)	507 (230)

PERFORMANCE

Energy Star Qualified	Yes
Refrigerant	R600a

FINISH OPTIONS

Stainless Steel	No
Panel Ready	Yes



APPLIANCE HIGHLIGHTS

Contemporary European design
115°/90° opening flush hinge, allowing true integrated install
Large and legible digital display
Soft-close crisper
Soft-close large pantry drawer, adjustable temperature
Sabbath mode
Height adjustable cantilever shelves
Spill-proof glass shelves
LED lighting
Field reversible doors
3D door adjustment, for easy door panel alignment
Ultra quiet 43 dB(A)
Appliance leveling from the front

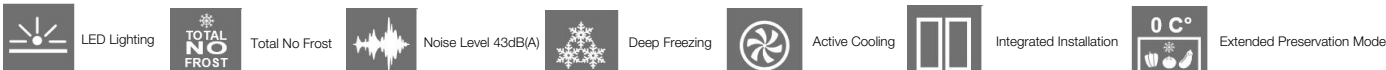
RECOMMENDED PANEL DIMENSIONS

Fridge Panel

Height, in (mm) 51-1/16 (1297)
Width, in (mm) 29-3/4 (756)
Thickness, in (mm) Minimum 3/4 (19) - Maximum 1-1/4 (32)
Maximum Weight, lbs (kg) 34.6 (15.7)

Freezer Panel

Height, in (mm) 28-11/16 (729)
Width, in (mm) 29-3/4 (756)
Thickness, in (mm) Minimum 3/4 (19) - Maximum 1-1/4 (32)
Maximum Weight, lbs (kg) 19.4 (8.8)



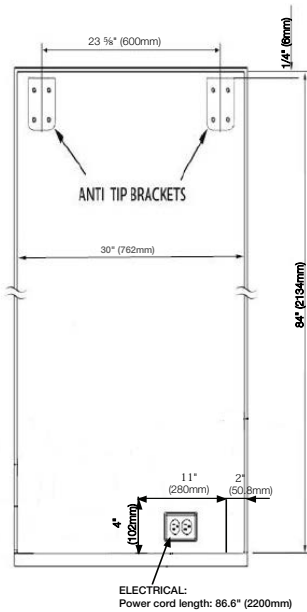
Installation Note:

For the most up-to-date information of any of the products in this manual, please visit www.fulgor-milano.us, or call your local dealer prior to final installation of the product. Fulgor Milano reserves the right to make updates to the information and products or discontinue models without notice. Any information regarding applicable limited warranty may be found in accompanying product materials or call your local dealer for further details. Proper installation is responsibility of the installer. Fulgor Milano declines all responsibility for damages to products, property, or people deriving from incorrect installation or improper, erroneous or unsuitable use. All product dimensions are noted in inches and metric units.

30" OVERLAY BUILT-IN FRIDGE

FM4BM30FBI

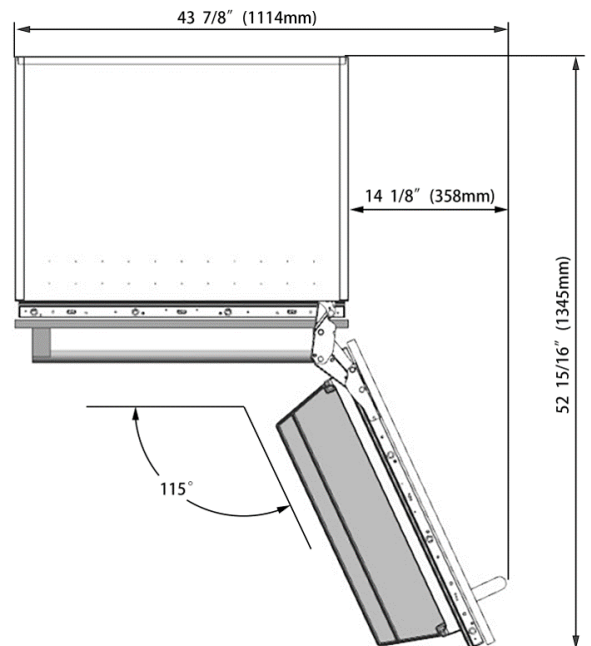
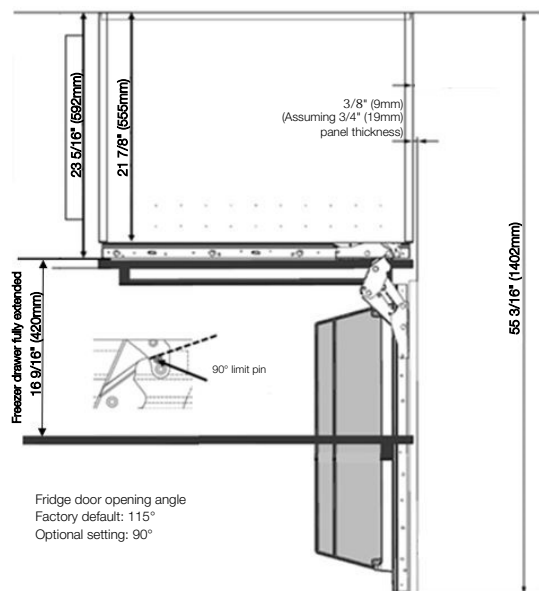
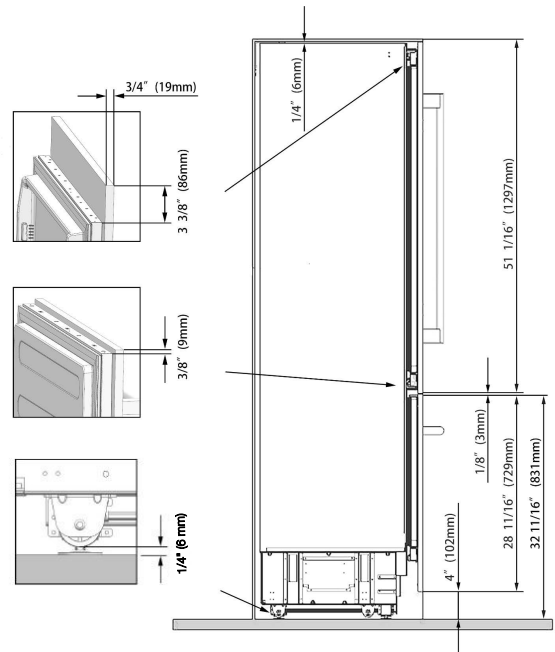
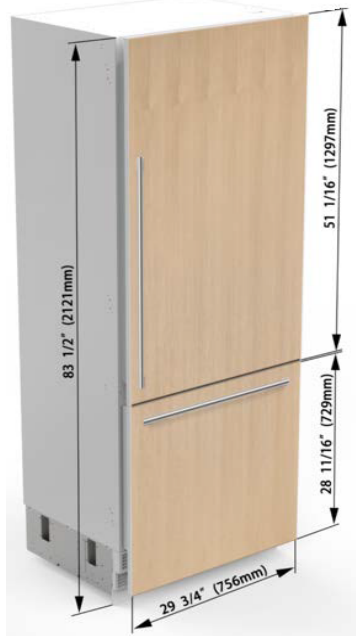
DIMENSIONS AND INSTALLATION



RECOMMENDED NICHE DIMENSIONS:

Width: 30" (762mm)
Height: 84" (2134mm)

Depth: 25 1/2" (24 3/4" (629mm) + 3/4" panel thickness for flush to gable finish).
Alternatively, 25" (when using a recessed receptacle or if receptacle is in an adjacent cabinet kick space).



Installation Note:

For the most up-to-date information of any of the products in this manual, please visit www.fulgor-milano.us, or call your local dealer prior to final installation of the product. Fulgor Milano reserves the right to make updates to the information and products or discontinue models without notice. Any information regarding applicable limited warranty may be found in accompanying product materials or call your local dealer for further details. Proper installation is responsibility of the installer. Fulgor Milano declines all responsibility for damages to products, property, or people deriving from incorrect installation or improper, erroneous or unsuitable use. All product dimensions are noted in inches and metric units.