

49 1/4"

1 TEMPLATE



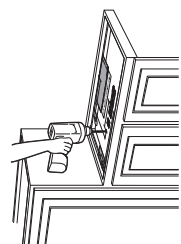
TEMPLATE 2 - THIS SIDE IS FOR BOTTOM OF THE CABINET

IMPORTANT
Read the instruction booklet for complete instructions before beginning installation. Template must be laid against the cabinet when locating the holes.

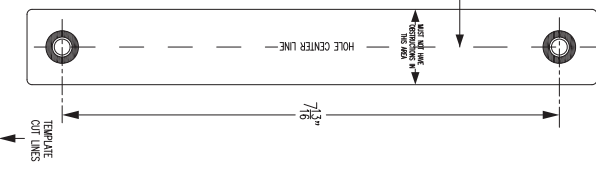
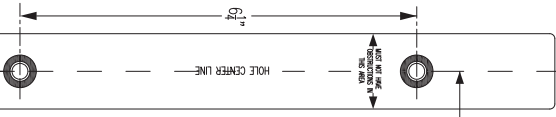
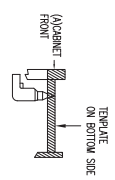
17 3/8"

INSTRUCTIONS

(See installation booklet for complete instructions)



If you drill the 4 mounting holes from the bottom side of the cabinet—measure the thickness of the front rail and cut that amount of the template from the front side. Place the cut edge against the back side of the front rail and position. Drill the 4 holes 1/4" DIA. as described in the installation instruction booklet.



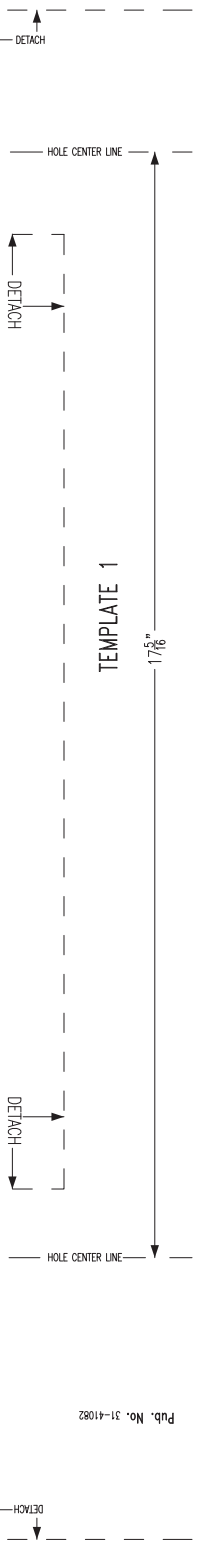
MICROWAVE FRONT CONTROL PANEL SIDE

MICROWAVE FRONT DOOR SIDE

MICROWAVE SIDE B

1 TEMPLATE

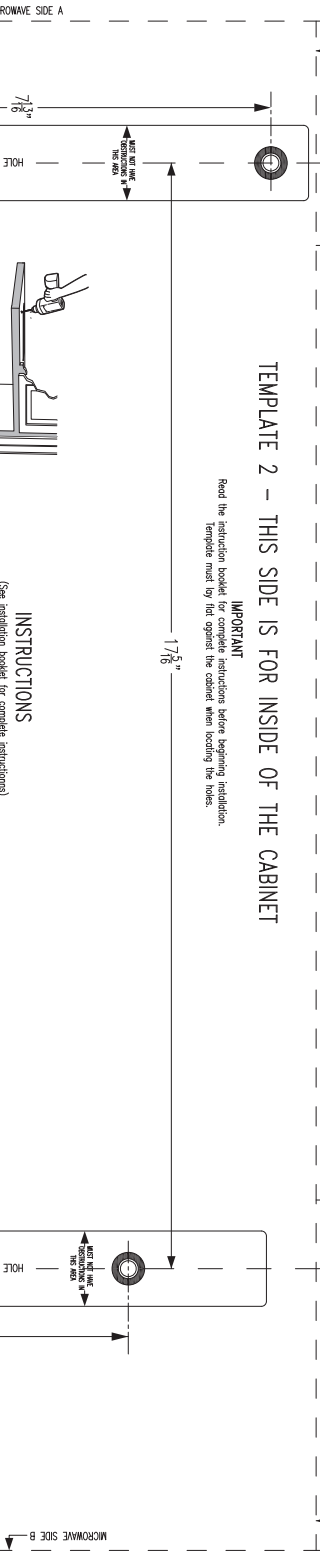
17⁵/₈"



TEMPLATE 2 - THIS SIDE IS FOR INSIDE OF THE CABINET

IMPORTANT
Read the instruction booklet for complete instructions before beginning installation. Template must fit snug against the cabinet when locating the holes.

17⁵/₈"



INSTRUCTIONS

(See installation booklet for complete instructions)

If you drill the 4 mounting holes from the inside of the cabinet, refer to the front side of the instruction booklet. Drill the 4 holes 1/4" DIA. as described in the installation instruction booklet.

IMPORTANT

MAKE SURE THAT THE LEFT AND RIGHT SIDES OF THIS TEMPLATE-MICROWAVE SIDE (A) OR (B)-ASSET WITH THE DESIRED, DESIRED LOCATION OF THE MOUNTED OVERLAPPING, ON WHETHER YOU CHOOSE TO DRILL FROM INSIDE THE CABINET OR FROM THE EXTERIOR SIDE OF THE CABINET. MICROWAVE SIDE (A) OR MICROWAVE SIDE (B) WILL INDICATE THE LOCATION OF THE SIDES OF THE MOUNTED OPEN.

