

# ENERGYGUIDE

Dishwasher  
Capacity: Standard



General Electric  
Models CDT7\*\*\*\*F, DDT5\*\*\*\*F,  
GDF5\*\*\*\*D, GDF5\*\*\*\*F, GDT5\*\*\*\*D,  
GDT5\*\*\*\*F, GDT7\*\*\*\*F, PDT7\*\*\*\*F, ADT5\*\*\*\*F

## Estimated Yearly Operating Cost (when used with an electric water heater)

# \$29



Cost Range of Similar Models

# 275 kWh

Estimated Yearly Electricity Use

# \$24

Estimated Yearly Operating Cost  
(when used with a natural gas water heater)

Your cost will depend on your utility rates and use.

- Cost range based only on standard capacity models.
- Estimated operating cost based on four wash loads a week and a 2007 national average electricity cost of 10.65 cents per kWh and natural gas cost of \$1.218 per therm.
- For more information, visit [www.ftc.gov/appliances](http://www.ftc.gov/appliances).



Canada

# ENERGUIDE

Energy consumption / Consommation énergétique

# 275 kWh

per year / par année

This model / Ce modèle ▼



**Uses least energy /  
Consomme le moins  
d'énergie**

**Uses most energy /  
Consomme le plus  
d'énergie**

Similar models  
compared

**BUILT IN / ENCASTRE  
STANDARD / ORDINAIRE**

Modèles similaires  
comparés

Model numbers

**GDF5\*\*\*\*D, GDF5\*\*\*\*F, GDT5\*\*\*\*D,  
GDT5\*\*\*\*F, GDT7\*\*\*\*F, PDT7\*\*\*\*F, ADT\*\*\*\*F**

Numéro du modèle

Removal of this label before first retail purchase is an offence (S.C. 1992, c. 36).  
Enlever cette étiquette avant le premier achat au détail constitue une infraction (L.C. 1992, ch. 36).



The **ENERGY STAR**® mark on this EnerGuide label signifies that this is an energy-efficient appliance. Its energy performance meets or exceeds the Government of Canada's high efficiency levels. Use the EnerGuide rating to determine how this appliance compares to other similar models.

La marque **ENERGY STAR**® sur cette étiquette ÉnerGuide signifie que l'appareil est éconergétique et que son rendement énergétique satisfait ou dépasse les niveaux de haute efficacité du gouvernement du Canada. Utilisez la cote ÉnerGuide afin de comparer le rendement de l'appareil avec celui d'autres modèles similaires.

165D9046P058B



LINE  
BLACK

DIE STRIKE  
(DOES NOT PRINT)

Customer: General Electric Co.

Size: 5.375" x 7.375"

Part #: 165D9046P058 (Side B)

Art Prep/Date: 07/19/13

Description: PM Label Energy Guide

Special Instructions: CHANGES

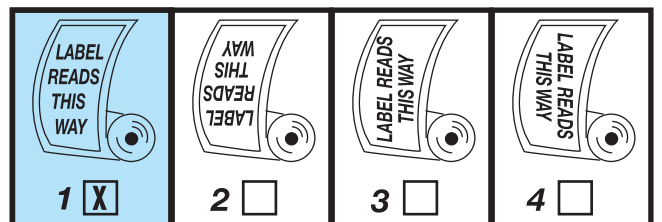
Please check this proof carefully against your original copy and specifications.

**ART PROOF ONLY**

***This proof must be signed, or we cannot proceed with production of this label.***

### UNWIND CHART

#### LABEL SIDE OUT



#### SIGNATURE OF CUSTOMER

PROOF O.K. APPROVAL DATE: \_\_\_\_\_

PROOF O.K. WITH CORRECTIONS OR ALTERATIONS AS INDICATED.

MAKE CORRECTIONS OR ALTERATIONS AS INDICATED, AND SHOW A REVISED PROOF.