

# ENERGYGUIDE



## Refrigerator-Freezer

- Automatic Defrost
- Bottom-Mounted Freezer
- Without Through-the-Door Ice

General Electric

Model(s): PWE23KGD\*\*\*\*,

PWE23KMD\*\*\*\*, PWE23KSD\*\*\*\*

Capacity: 23.1 Cubic Feet

**Compare ONLY to other labels with yellow numbers.**

Labels with yellow numbers are based on the same test procedures.

## Estimated Yearly Energy Cost

# \$72



Cost range not available

# 596 kWh

## Estimated Yearly Electricity Use

- Your cost will depend on your utility rates and use.
- Cost range based only on models of similar capacity with automatic defrost, bottom-mounted freezer, and without through-the-door ice.
- Estimated energy cost based on a national average electricity cost of 12 cents per kwh.



**ENERGY STAR**

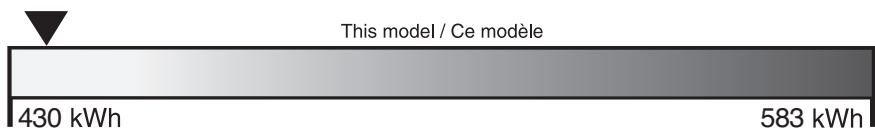
[ftc.gov/energy](http://ftc.gov/energy)

Canada

# ENERGUIDE

Energy consumption / Consommation énergétique

**433 kWh**  
per year / par année



**Uses least energy /  
Consomme le moins  
d'énergie**

**Uses most energy /  
Consomme le plus  
d'énergie**

**Type 5**

22.5 -24.4

volume in ft.<sup>3</sup> / volume en pi<sup>3</sup>

Similar models  
compared

Modèles similaires  
comparés

Model numbers

**PWE23KGD\*\*\*\*,  
PWE23KMD\*\*\*\*, PWE23KSD\*\*\*\***

Numéro du modèle

Removal of this label before first retail purchase is an offence (S.C. 1992, c. 36).  
Enlever cette étiquette avant le premier achat au détail constitue une infraction (L.C. 1992, ch. 36).



The **ENERGY STAR**® mark on this EnerGuide label signifies that this is an energy-efficient appliance. Its energy performance meets or exceeds the Government of Canada's high efficiency levels. Use the EnerGuide rating to determine how this appliance compares to other similar models.

La marque **ENERGY STAR**® sur cette étiquette ÉnerGuide signifie que l'appareil est éconergétique et que son rendement énergétique satisfait ou dépasse les niveaux de haute efficacité du gouvernement du Canada. Utilisez la cote ÉnerGuide afin de comparer le rendement de l'appareil avec celui d'autres modèles similaires.

239D4425P001B



**LINE  
BLACK**

**DIE STRIKE  
(DOES NOT PRINT)**

Customer: General Electric Co.	Size: 5.375" x 7.375"
Part #: 239D4425P001 (Side B)	Art Prep/Date: 02/06/14
Description: New Energy Guide Tag	Special Instructions: Revision

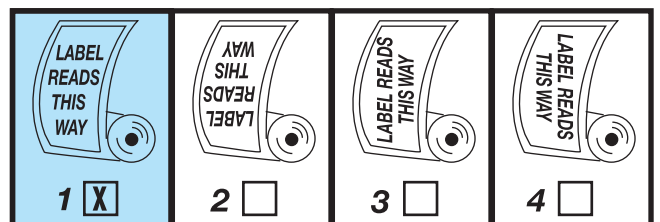
Please check this proof carefully against your original copy and specifications.

**ART PROOF ONLY**

***This proof must be signed, or we cannot proceed with production of this label.***

**UNWIND CHART**

**LABEL SIDE OUT**



**SIGNATURE OF CUSTOMER**

- PROOF O.K. APPROVAL DATE: \_\_\_\_\_
- PROOF O.K. WITH CORRECTIONS OR ALTERATIONS AS INDICATED.
- MAKE CORRECTIONS OR ALTERATIONS AS INDICATED, AND SHOW A REVISED PROOF.