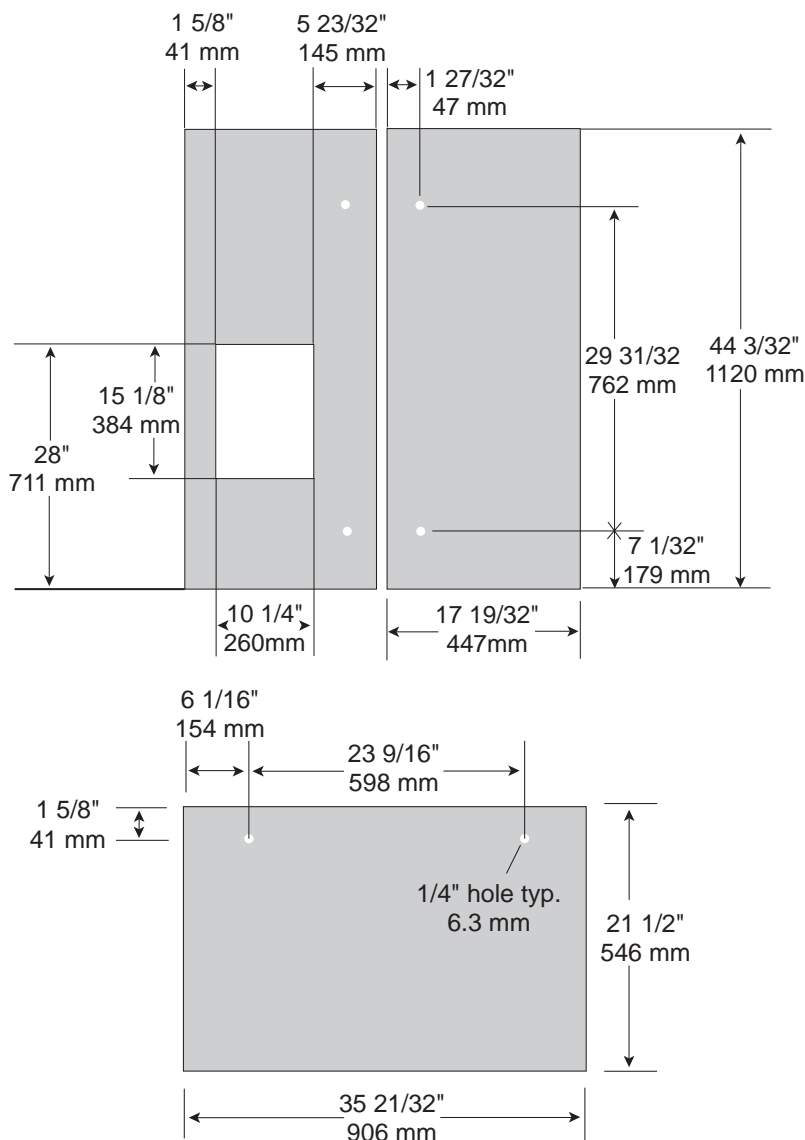


Ice and Water Decorator Panel Installation



WEIGHT REQUIREMENTS FOR PANEL INSERTS

- Individual refrigerator door panels should not exceed 15 lbs. (7 kg).
- Freezer drawer panel should not exceed 15 lbs. (7 kg).

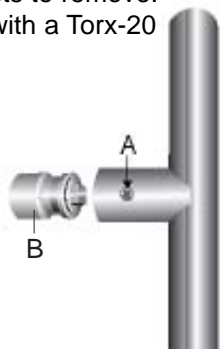
INSTALLING AND REMOVING HANDLES

REMOVING HANDLES

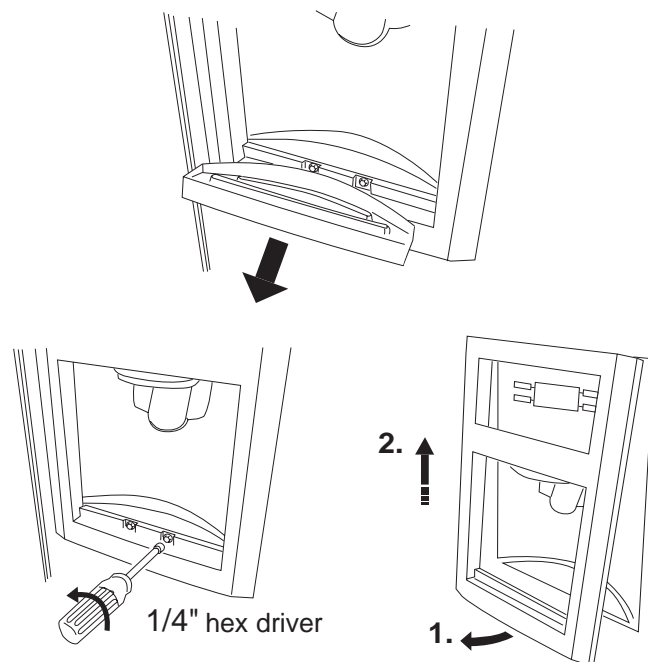
1. Locate set screws (A) in handle and loosen set screws with a 3/32" Allen wrench.
2. Lift handle from handle mounting posts to remove.
3. Remove handle mounting posts (B) with a Torx-20 driver.

INSTALLING HANDLES

1. Install handle mounting posts (B) with a Torx-20 driver.
2. Position handle over mounting posts.
3. Tighten set screws (A) with a 3/32" Allen wrench.



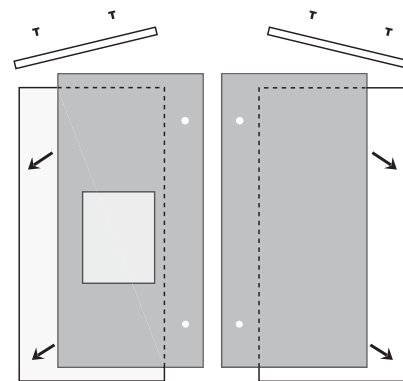
REMOVING DISPENSER (Reverse procedure to install.)



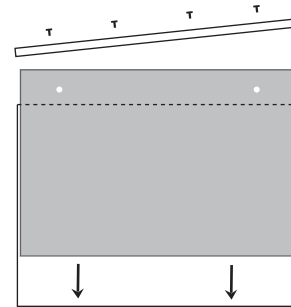
PANEL INSTALLATION

Tools required:

- Phillips screwdriver,
- 1/4" hex driver
- Remove top trim screws and handles.
- Refer to handle removal section.
- Remove dispenser.
- Install panels, top trim, screws, and dispenser.



Refrigerator Door



Freezer Door

NOTE: Inside refrigerator door edges are not trimmed. Installed wood panel edges will be exposed and require finishing.

NOTE: You can create the panels yourself or consult your cabinetmaker. See dimensional drawings for decorator panel inserts. Decorator panels should be a 1/4" (6.3mm) thick.