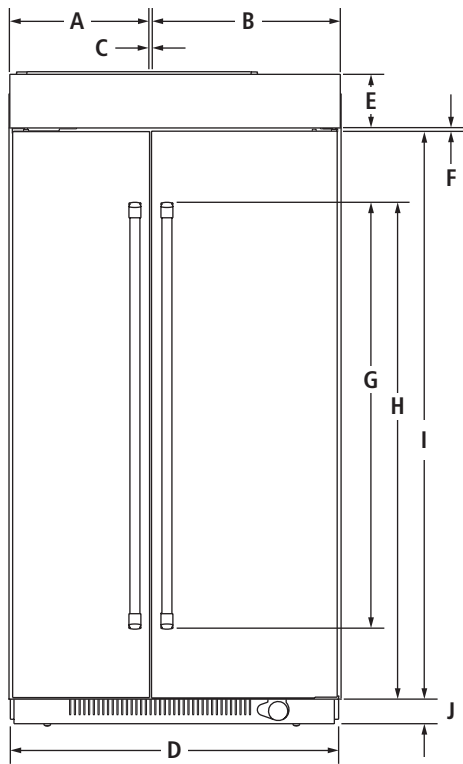


42" FULLY INTEGRATED SIDE-BY-SIDE REFRIGERATOR

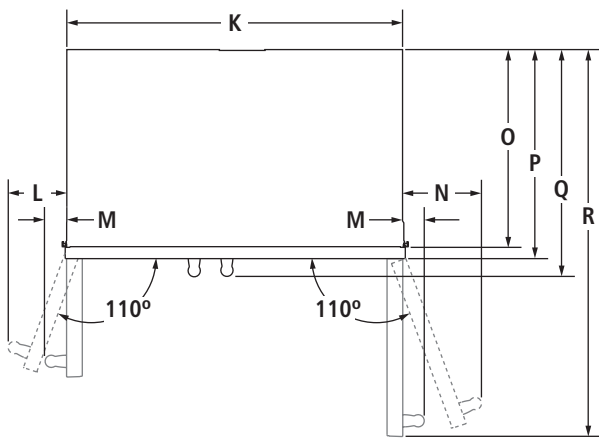
(BASE UNIT REQUIRES SUITE-COORDINATING PANEL KIT OR CUSTOM PANELS AND HANDLES)

JS42NXFXDW – 41⁷/₈" x 83¹/₈" x 24"

PRODUCT DIMENSIONS



FRONT VIEW



TOP VIEW

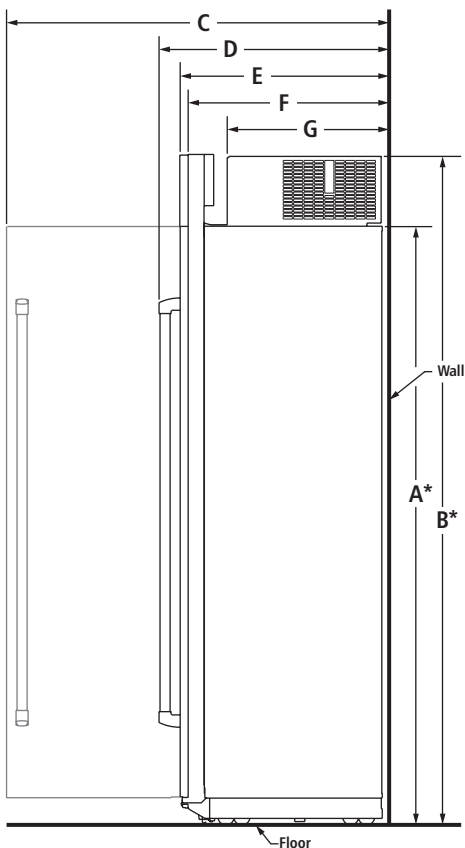
MODEL #	JS42NXFXDW	
	in	cm
A	Width of freezer door	17 ⁵ / ₈ 44.8
B	Width of refrigerator door	23 ⁵ / ₈ 60.0
C	Space between doors	1/8 0.3
D	Overall width	41 ⁷ / ₈ 106.4
E	Height of top grille	6 ¹ / ₂ 16.5
F	Space between doors and top grille	3/8 0.8
G	Height of door handles Pro-Style® Stainless	63 160.0
	Euro-Style Stainless	50 127.1
H	Height to top of door handles Pro-Style® Stainless	67 170.3
	Euro-Style Stainless	66 ⁵ / ₈ 169.1
I	Height of doors	74 ¹ / ₄ 188.6
J	Height of bottom grille	3 7.6
K	Width of recessed refrigerator	41 104.1
L	Width from side of refrigerator to freezer door handle – door fully open 110° Pro-Style® Stainless	7 ¹ / ₈ 18.1
	Euro-Style Stainless	6 ³ / ₄ 17.1
M	Width from side of refrigerator to handle – doors open 90° Pro-Style® Stainless	2 5.1
	Euro-Style Stainless	1 ¹ / ₂ 3.9
N	Width from side of refrigerator to refrigerator door handle – door fully open 110° Pro-Style® Stainless	9 ⁵ / ₈ 24.4
	Euro-Style Stainless	9 ¹ / ₈ 23.1
O	Depth without door panel kit	24 61.0
P	Depth with doors Pro-Style® Stainless panel kit	24 ³ / ₄ 62.9
	Euro-Style Stainless panel kit	24 ³ / ₄ 62.9
	Custom panel (3/4"/1.9 cm)	24 ³ / ₄ 62.9
Q	Depth with handles Pro-Style® Stainless	27 ³ / ₈ 69.5
	Euro-Style Stainless	26 ⁷ / ₈ 68.3
R	Depth with refrigerator door open 90°	47 ¹ / ₄ 120.0

42" FULLY INTEGRATED SIDE-BY-SIDE REFRIGERATOR

(BASE UNIT REQUIRES SUITE-COORDINATING PANEL KIT OR CUSTOM PANELS AND HANDLES)

JS42NXFXDW – 41⁷/₈" x 83¹/₈" x 24"

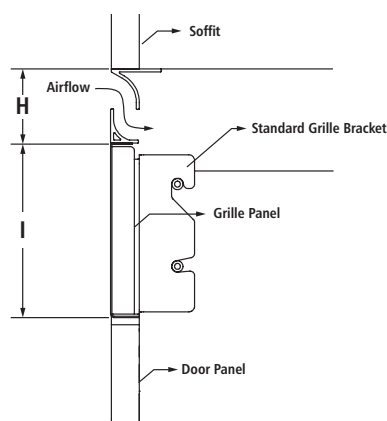
DIMENSIONS AS INSTALLED



MODEL #		JS42NXFXDW	
		in	cm
A*	Height without compressor (min.)	74 ³ / ₈	188.9
B*	Height of recessed refrigerator (min.)	83 ¹ / ₈	211.1
C	Depth with refrigerator door open 90° (min.)	47 ¹ / ₄	120.0
D	Depth with handles (min.)		
	Pro-Style® Stainless	27 ³ / ₈	69.5
	Euro-Style Stainless	26 ⁷ / ₈	68.3
E	Depth with doors (min.)		
	Pro-Style® Stainless panel kit	24 ³ / ₄	62.9
	Euro-Style Stainless panel kit	24 ³ / ₄	62.9
	Custom panel (3/4"/1.9 cm)	24 ³ / ₄	62.9
F	Depth without door panel kit (min.)	24	61.0
G	Depth of compressor (min.)	19 ⁷ / ₈	50.5
H	Space between top grille and soffit	1	2.5
I	Height of top grille	5 ¹ / ₂	14.0

*Add 1¹/₈" (2.9 cm) to the height dimension when leveling legs are fully extended.

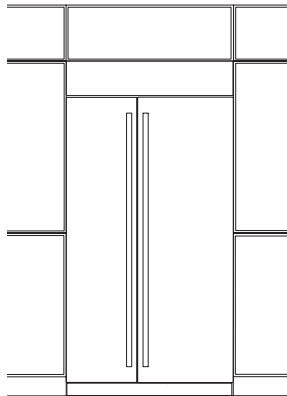
SIDE VIEW



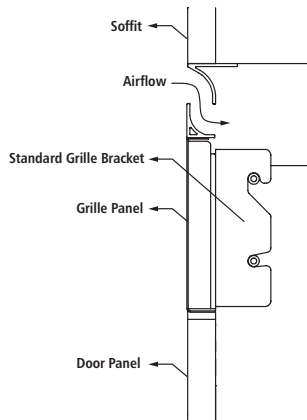
SIDE VIEW – PANEL KIT

42" FULLY INTEGRATED SIDE-BY-SIDE REFRIGERATOR (BASE UNIT REQUIRES SUITE-COORDINATING PANEL KIT OR CUSTOM PANELS AND HANDLES) JS42NXFXDW – 41⁷/₈" x 83¹/₈" x 24"

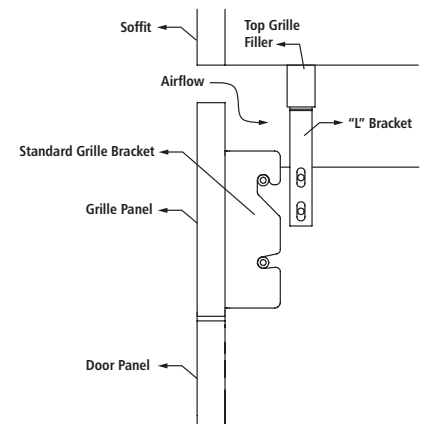
STANDARD INSTALLATION REQUIREMENTS – FLUSH GRILLE PANEL



FRONT VIEW



SIDE VIEW – PANEL KIT



SIDE VIEW – CUSTOM PANEL

- Attach the standard grille with the provided standard grille bracket.
- This bracket allows for the required minimum air gap between the refrigerator and the grille.

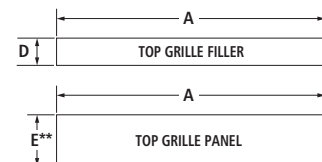
STANDARD INSTALLATION – FLUSH GRILLE CUSTOM OVERLAY PANEL DIMENSIONS

MODEL #		JS42NXFXDW	
		in	cm
REVEAL*		3/8	1.0
A	Width of top grille panel	41 1/4	104.8
B	Width of freezer door panel	17 9/16	44.6
C	Width of refrigerator door panel	23 9/16	59.9
D	Height of top grille filler	1	2.5
E**	Height of top grille panel	5 3/4	14.6
F	Height of door panels	74 1/4	188.6
REVEAL*		1/8	0.3
A	Width of top grille panel	41 3/4	106.0
B	Width of freezer door panel	17 13/16	45.2
C	Width of refrigerator door panel	23 13/16	60.5
D	Height of top grille filler	1	2.5
E**	Height of top grille panel	5 3/4	14.6
F	Height of door panels	74 1/4	188.6

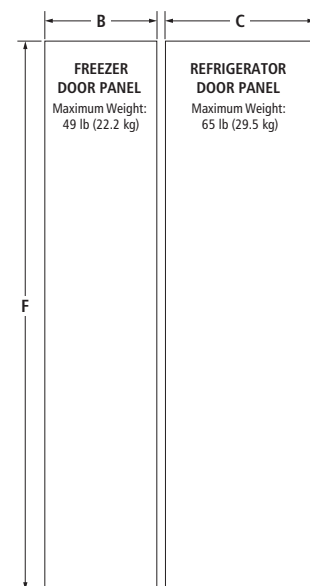
*Gap between door panel and adjacent cabinet.

**Grille panel height allows for an air gap critical to refrigerator performance.

NOTE: The required thickness for all panels is 3/4" (1.9 cm). This installation does not require filler or backer panels.



Maximum Weight: 7 lb (3.2 kg)

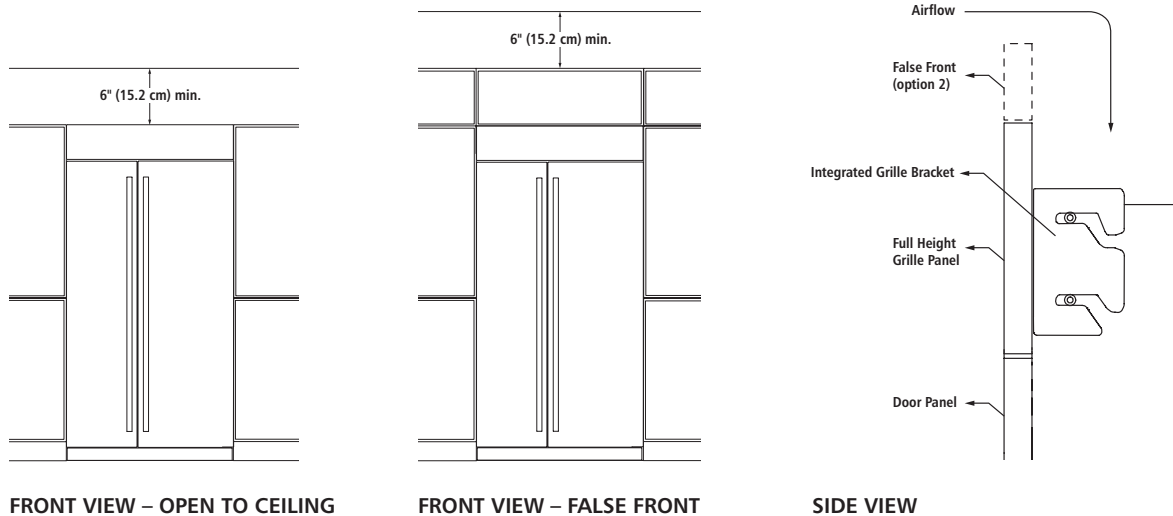


FREEZER DOOR PANEL
Maximum Weight: 49 lb (22.2 kg)

REFRIGERATOR DOOR PANEL
Maximum Weight: 65 lb (29.5 kg)

42" FULLY INTEGRATED SIDE-BY-SIDE REFRIGERATOR
 (BASE UNIT REQUIRES SUITE-COORDINATING PANEL KIT OR CUSTOM PANELS AND HANDLES)
JS42NXFXDW – 41⁷/₈" x 83¹/₈" x 24"

INTEGRATED INSTALLATION REQUIREMENTS – FULL-HEIGHT GRILLE PANEL

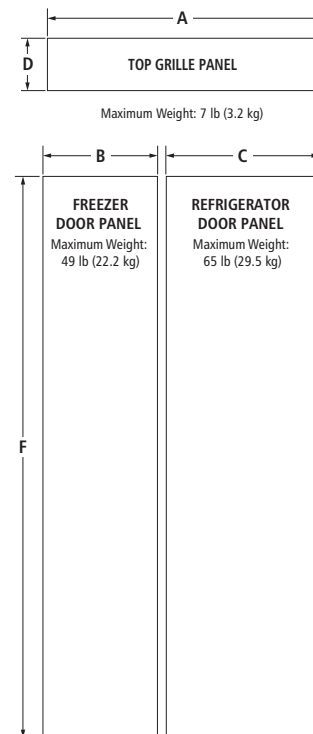


- Attach the full-height grille with the provided integrated grille bracket.
- Requires a minimum of 6" (15.2 cm) of open space above the refrigerator, which must not be blocked in any way, including soffits.

INTEGRATED INSTALLATION – FULL-HEIGHT GRILLE CUSTOM OVERLAY PANEL DIMENSIONS

Airflow Venting Requirements

Fully integrated installations require a minimum of 6" (15.2 cm) of open space above the refrigerator. This space must not be blocked in any way, including soffits.

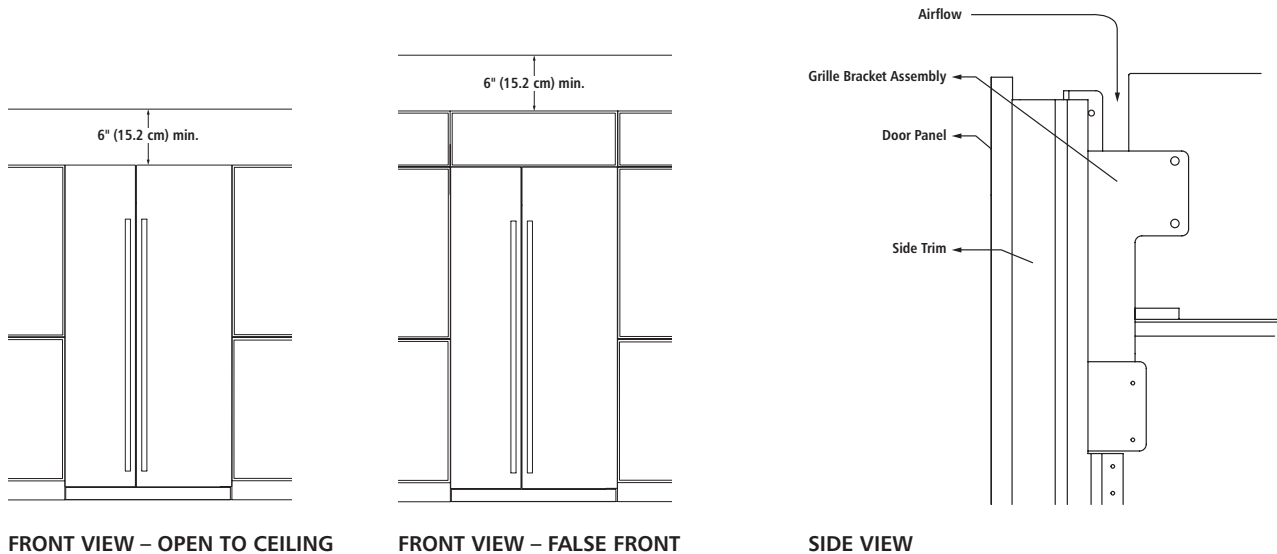


MODEL #		JS42NXFXDW	
REVEAL*		in	cm
A	Width of top grille panel	41 ¹ / ₄	104.8
B	Width of freezer door panel	17 ⁹ / ₁₆	44.6
C	Width of refrigerator door panel	23 ⁹ / ₁₆	59.9
D	Height of top grille panel	6 ⁵ / ₈	16.8
E	Height of door panels	74 ¹ / ₄	188.6
REVEAL*		1/8	0.3
A	Width of top grille panel	41 ³ / ₄	106.0
B	Width of freezer door panel	17 ¹³ / ₁₆	45.2
C	Width of refrigerator door panel	23 ¹³ / ₁₆	60.5
D	Height of top grille panel	6 ⁵ / ₈	16.8
E	Height of door panels	74 ¹ / ₄	188.6

*Gap between door panel and adjacent cabinet.
 NOTE: The required thickness for all panels is 3/4" (1.9 cm). This installation does not require filler or backer panels.

42" FULLY INTEGRATED SIDE-BY-SIDE REFRIGERATOR
 (BASE UNIT REQUIRES SUITE-COORDINATING PANEL KIT OR CUSTOM PANELS AND HANDLES)
 JS42NXFXDW – 41⁷/₈" x 83¹/₈" x 24"

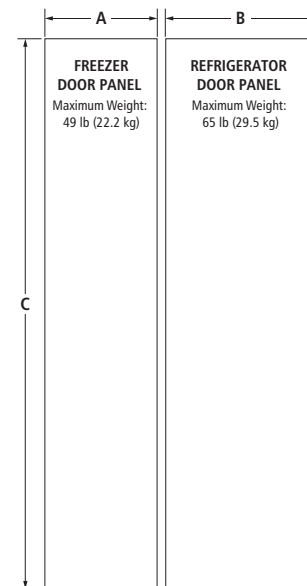
INTEGRATED INSTALLATION REQUIREMENTS – ARMOIRE-STYLE PANEL KIT



- Attach the grille bracket assembly and grille panel provided in the armoire-style panel kit.
- Requires a minimum of 6" (15.2 cm) of open space above the refrigerator, which must not be blocked in any way, including soffits.

INTEGRATED INSTALLATION – ARMOIRE-STYLE CUSTOM OVERLAY PANEL DIMENSIONS

The armoire-style door panel kit for Jenn-Air® fully integrated built-in refrigerators enables full-height custom door panels with a hidden top panel for the ultimate in integrated design.



MODEL #		JS42NXFXDW	
		in	cm
REVEAL*		3/8	1.0
A	Width of freezer door panel	17 ⁹ / ₁₆	44.6
B	Width of refrigerator door panel	23 ⁹ / ₁₆	59.9
C	Height of door panels	81	205.7
REVEAL*		1/8	0.3
A	Width of freezer door panel	17 ¹³ / ₁₆	45.2
B	Width of refrigerator door panel	23 ¹³ / ₁₆	60.5
C	Height of door panels	81	205.7

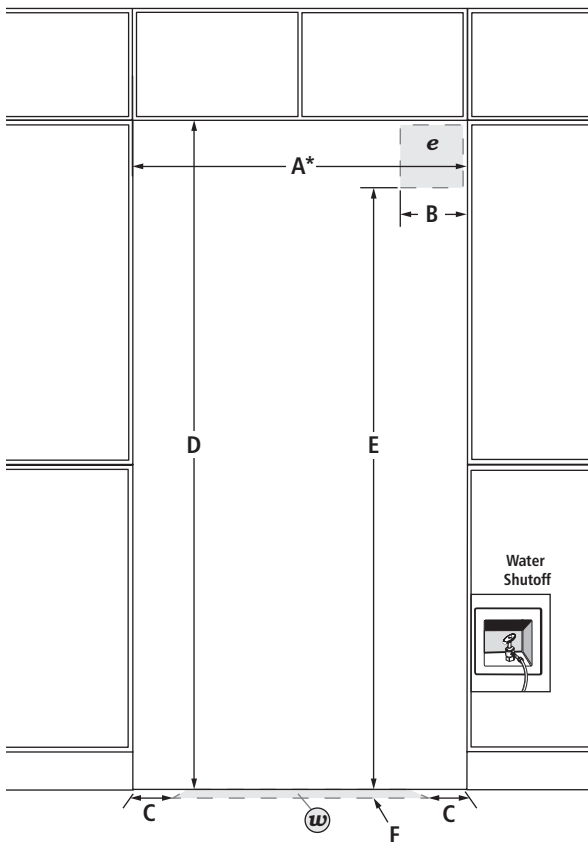
*Gap between door panel and adjacent cabinet.
 NOTE: The required thickness for all panels is 3/4" (1.9 cm). This installation does not require filler or backer panels.

42" FULLY INTEGRATED SIDE-BY-SIDE REFRIGERATOR

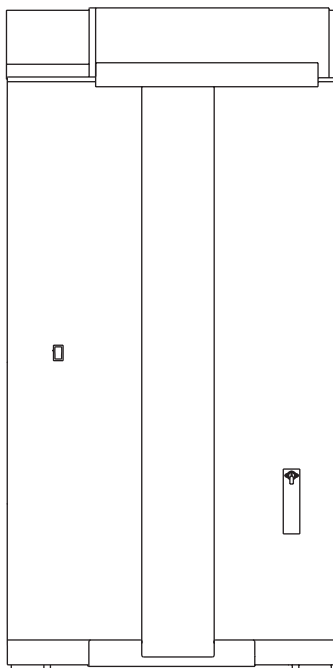
(BASE UNIT REQUIRES SUITE-COORDINATING PANEL KIT OR CUSTOM PANELS AND HANDLES)

JS42NXFXDW – 417/8" x 831/8" x 24"

OPENING/CLEARANCE DIMENSIONS



FRONT VIEW



BACK VIEW

MODEL #		JS42NXFXDW	
		in	cm
A*	Width (min.)	42	106.7
B	Width of recommended electrical location	4	10.2
C	Distance from side of cabinet to recommended water connection location	6	15.2
D	Height (min.)	84 ^{1/4}	214.0
E	Height to recommended electrical location	77	195.6
F	Depth of recommended water connection location (max.)	1	2.5
e	Recommended electrical connection location		
w	Recommended water connection location		

*Minimum width must extend behind the face of the cabinet for at least 2" (5.1 cm).

ELECTRICAL REQUIREMENTS

115 volt, 60 Hz, AC only, 15- or 20-amp fused, grounded circuit is required. A dedicated circuit is recommended. Use an outlet that cannot be turned off by a switch. Do not use an extension cord.

WATER PRESSURE REQUIREMENTS

A cold water supply with water pressure between 30 and 120 psi (207 and 827 kPa) is required to operate the ice maker. Call a licensed, qualified plumber with any questions about the water pressure.

Reverse Osmosis Water Supply

IMPORTANT: The pressure of the water coming out of a reverse osmosis system going to the water inlet valve of the refrigerator needs to be between 30 and 120 psi (207 and 827 kPa).

If a reverse osmosis water filtration system is connected to the cold water supply, the water pressure to the reverse osmosis system needs to be a minimum of 40 to 60 psi (276 to 414 kPa).

LOCATION REQUIREMENTS

Floor must be able to support refrigerator (more than 600 lb [272 kg]), door panels and contents of the refrigerator and must be at the same level as flooring in the room.