

This Data Sheet Includes Information On

Jenn-Air

• **Product Model Number (s):**

30" Electric Radiant Cooktops:
JEC8430ADB, JEC8430ADF, JEC8430ADN,
JEC8430ADS and JEC8430ADW

• **Dimensions (Actual Size)**

Overall width: 29 15/16"

Overall depth: 21 1/2"

Distance from countertop to bottom of unit: 3 5/8"

Cut-Out width: 29 1/16"

Cut-Out depth: 20 3/8"

Minimum spacing to nearest vertical
combustible wall to the RIGHT: 0"

Minimum spacing to nearest vertical
combustible wall to the LEFT: 0"

Minimum spacing to nearest vertical
combustible wall to the REAR: 0"

Minimum spacing to front edge of counter: 2 1/8"

Minimum distance between cooktop
and cabinet directly above: 30"

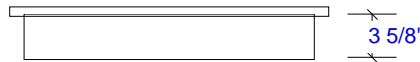
Minimum width of cabinet directly above: 30"

Maximum depth of cabinets directly
above and adjacent: 13"

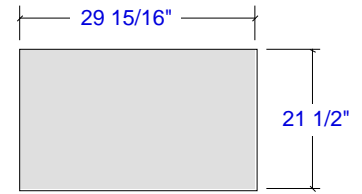
• **Additional Information**

- Electrical requirements : three-wire, single phase, AC 120/240volt, 60Hz. Properly grounded. Protected by 30 amp circuit. 45" flexible cable with 6" wire leads is furnished. Locate electrical box a min. of 7" below the cooktop
- Minimum clearance from top of counter to combustible material below is 4 1/4".
- Countertop must be supported within 3" of cutout.
- Unit may be installed in combustible countertop and adjacent to (0" from) combustible walls.
- Cabinetry over cooktop : 30' minimum clearance between the top of the cooking surface and the bottom of an unprotected wood or metal cabinet. 24" minimum when bottom of wood or metal cabinet is protected by not less than 1/4" flame retardant millboard covered with not less than no. 28 MSG sheet steel, 0.015" stainless steel, 0.024" aluminum or copper.

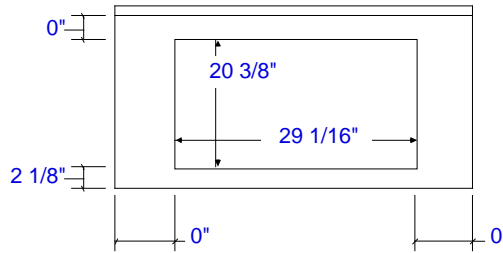
See page 2 for additional information



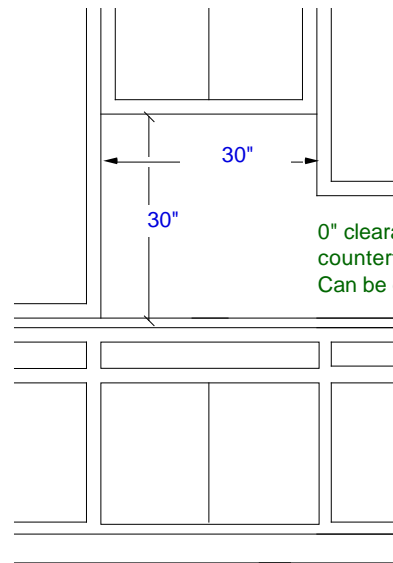
Side View (not to scale)



Overall Dimensions
Top View (not to scale)



Cut-Out Dimensions
Countertop View
(not to scale)



Cabinet Requirements
Wall View
(not to scale)

Subject to change without notice. This system is designed to be updated daily if necessary. Dimension Express is not responsible for use of superseded, voided, or outdated data sheets. Because of the difficulty or impracticability of determining actual damages, liability of Dimension Express shall not exceed \$50.00.

Copyright © Dimension Express, 2002.

251

• NEVER reuse Data Sheets. Data Sheets are subject to change without notice. Dimension Express is a FREE service bureau and is updated daily, it makes far more sense to spend the time necessary to request new Data Sheets for each project, as opposed to the problems, time, costs, and risks associated with reusing old Data Sheets.

- Call Dimension Express if you have any questions at (775) 833-3633 •
- Always refer to a current Code at a Glance or manufacturer directory •
- Data Sheet codes change on the first of odd numbered months at 12:01am •

BN • A251B149 • • 032603 • 95659 • 43605

30" Electric Radiant Cooktops:
JEC8430ADB, JEC8430ADF, JEC8430ADN,
JEC8430ADS and JEC8430ADW

Additional Information:

- To eliminate the hazard of reaching over heated surface units, cabinet storage space located above the surface units should be avoided. If cabinet storage is to be provided, the hazard can be reduced by installing a range hood that projects horizontally a minimum of 5" beyond the bottom of the cabinets.
- Radius corners of cutout and file to insure smooth edges and prevent corner cracking (1/4" Radius).

Subject to change without notice. This system is designed to be updated daily if necessary. Dimension Express is not responsible for use of superseded, voided, or outdated data sheets. Because of the difficulty or impracticability of determining actual damages, liability of Dimension Express shall not exceed \$50.00. Copyright © Dimension Express, 2002.

• NEVER reuse Data Sheets. Data Sheets are subject to change without notice. Dimension Express is a FREE service bureau and is updated daily, it makes far more sense to spend the time necessary to request new Data Sheets for each project, as opposed to the problems, time, costs, and risks associated with reusing old Data Sheets.

- Call Dimension Express if you have any questions at (775) 833-3633 •
- Always refer to a current Code at a Glance or manufacturer directory •
- Data Sheet codes change on the first of odd numbered months at 12:01am •