

Installing the products as pairs

(Contact a LG Electronics service center, After initial product installation, all services requested by the customer will be charged.)

Installation components

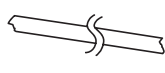
Before installing the freezer and refrigerator in pairs, prepare the following components.
The number of screws may vary according to the model.



1. Bracket frame A (1EA)



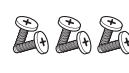
2. Bracket frame B (1EA)



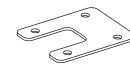
3. Deco case (1EA)



4. Screw A (2EA)



5. Screw B (6EA)



6. Bracket frame C (1EA)



7. Cap Door (2EA)

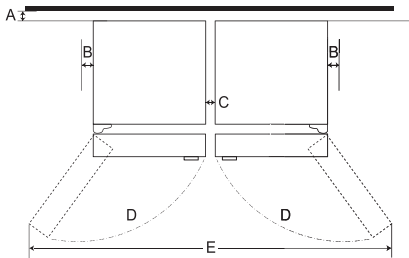
How to install the product as part of a pair

1. Install the freezer and refrigerator side by side by referring to the basic installation sequence and reference dimensions below.

[Basic installation order]

• When installing 2 units: Freezer-Refrigerator

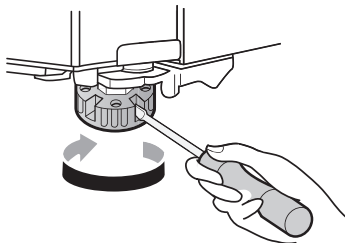
[Reference dimension]



	Dimension (mm)
A	minimum 50
B	50
C	11
D	110°
E	1643

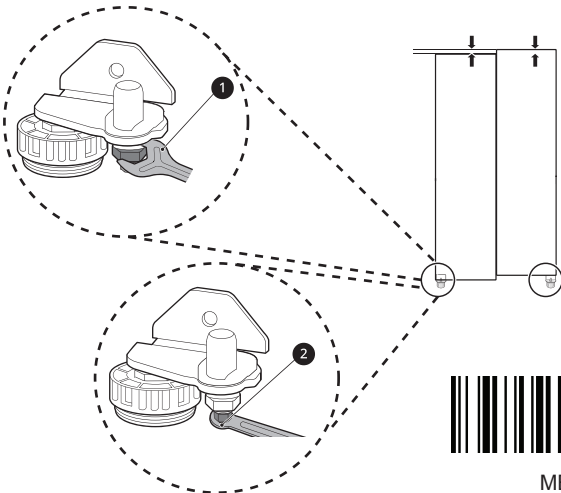
2. If the appliance seems unsteady, or the doors do not close easily, adjust the appliance's tilt using the instructions below.

Turn the leveling leg clockwise to raise that side of the appliance or counterclockwise to lower it.

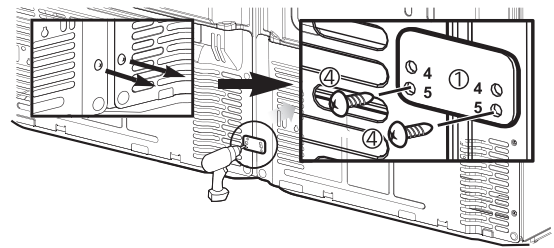


3. If the door of the appliance is not level, adjust the difference in the height of the appliance door.

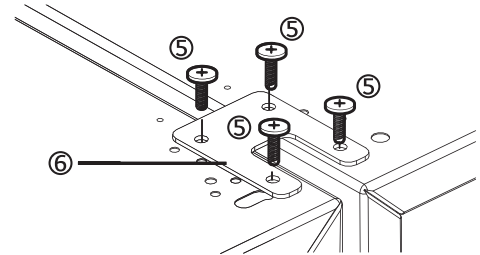
- Open the door and use the spanner (1) to loosen the keeper nut by turning it to the left.
- Use the spanner (2) to adjust the height by turning the adjustment hinge pin to the left or to the right



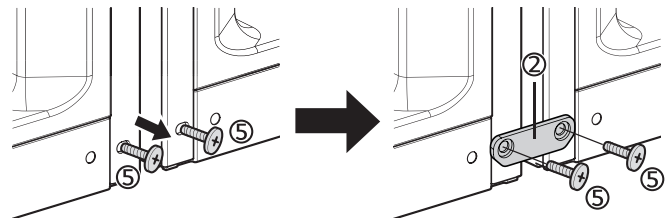
4. Remove the No. (4) screw from the radiation grill in the back of the product. Align the No. (1) bracket frame in the hole in the product and reassemble it using the No. (4) screw.



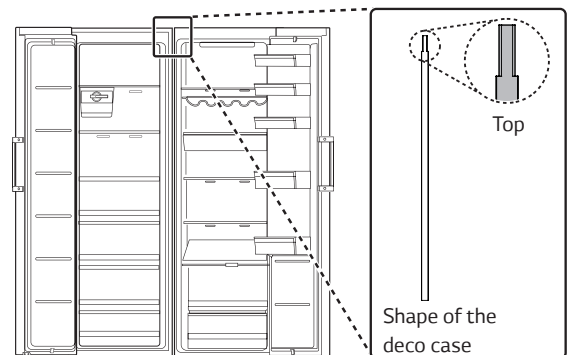
5. Align the No. (6) bracket frame with the hole in the top of the product and assemble it using the No. (5) screw.



6. Remove the No. (5) screw from the bottom of the front of the product. Align the No. (2) bracket frame with the hole in the product and reassemble it using the No. (5) screw.



7. Insert the No. (4) deco cover between the tops of the products. Next, insert the No. (5) deco case between the products (deco cover) slowly, starting from the top, until it is fully fitted.



MBM63936335_Rev.01