



Getting started with LG ThinQ® is easy

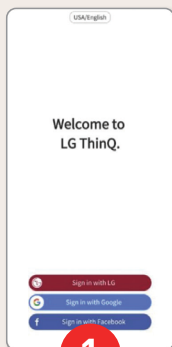
Download the LG ThinQ® App and Connect Your Appliance

Get the ThinQ® app to access smart functions, ThinQ Care™ alerts and new ThinQ UP™ features. After you install the app, follow the steps below to connect your appliance.



Scan the QR code to download the app to your phone or to launch the app if you already have it.

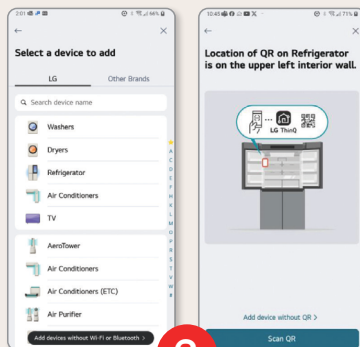
Set Up The ThinQ® App, It's As Easy As 1-2-3



1

Sign In

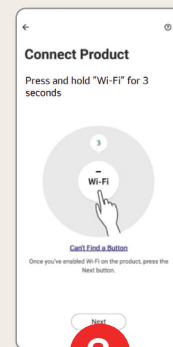
Open the app and use your account to sign in. Still don't have an account? Creating one is quick and easy.



2

Find Your Device

Click the "+" symbol in the app, select a device to add, then simply scan your product's QR code.



3

Connect to Wi-Fi

Press the Wi-Fi button on your device for 3 seconds. Once your network appears in app, connect to control the device on your phone.



With the **ThinQ®** app you can easily check on and control your smart appliances from anywhere.



With **ThinQ Care™**, you'll receive proactive maintenance and diagnostic alerts to make taking care of your appliances a breeze.



ThinQ UP™ provides regular updates with new features, allowing your smart appliances to evolve and be customized the way you want.

Life's Good.

ThinQ available on select products. Features and functionality may vary by product.

© 2024 LG Electronics USA, Inc. All rights reserved. "LG Life's Good" is a registered trademark of LG Corp. Apple and the Apple logo are trademarks of Apple Inc. App Store is a service mark of Apple Inc. Google Play and the Google Play logo are trademarks of Google LLC.

22024.mcq.12/24.e