

## LG REFRIGERATION

# LRONC1414G

24" Customizable Column Refrigerator,  
Counter Depth, 13.6 cu.ft.

**13.6 cu.ft. Capacity**

**Customizable Configuration**

**Multi-Air Flow™ System**

**Door Cooling+**

**Zero Clearance**

**SmartPull™ Handle**

**Reversible Door**

**ThinQ™**

**ENERGY STAR® Qualified**

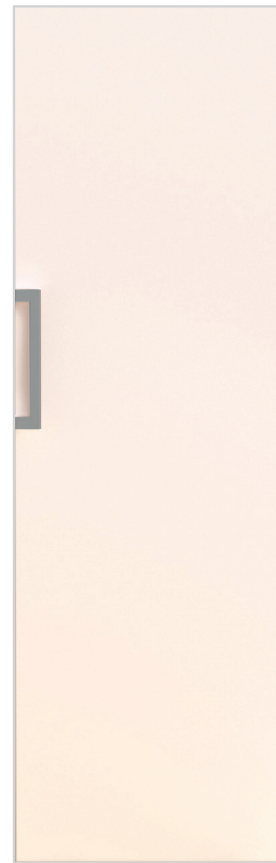
### Additional Colours of Door Panels Available

Call 1-888-542-2623 to order from LG Parts & Services

- Beige Glass (Default)
- Pink Glass
- Mint Glass
- Stainless Steel
- Green Stainless Steel
- Matte Black Stainless Steel

## ThinQ®

CAPACITY	
Refrigerator (cu.ft.)	13.6
Total Capacity (cu.ft.)	13.6
ENERGY	
Energy Consumption (kWh/Year)	213
ENERGY STAR® Qualified	Yes
COOLING	
Smart Inverter Compressor	Yes
Multi-Air Flow	Yes
No Frost	Yes
Door Cooling+	Yes
CONVENIENCE	
Temperature Controls	Digital
Express Cool	Yes
Door Alarm	Yes
Sabbath Mode	Yes
Smart Diagnosis™	Yes
ThinQ®	Yes
REFRIGERATOR	
No. of Shelves	5
Shelf Construction	Spill Protector™ Tempered Glass
Wine Rack	Yes
Crisper Bins	1
Refrigerator Light	LED
REFRIGERATOR DOOR	
No. of Bins	5
Door Bin Construction	1 Piece (Clear)
Reversible Door	Yes
MATERIALS AND FINISHES	
Door Type	Flat
Reversible Door	Yes
Hidden Hinges	Yes
Zero Clearance	Yes
Handles	SmartPull™
Default Door Panel Colour	Beige Glass

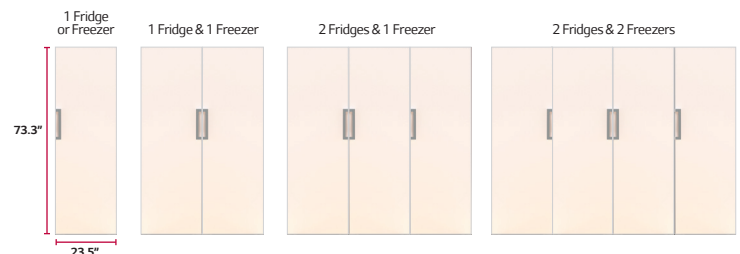


DIMENSIONS/CLEARANCES/WEIGHTS	
Depth with Handles	27 7/8"
Depth without Handles	26"
Depth without Door	23 5/8"
Depth (Total with Door Open)	48 1/4"
Height to Top of Case	73 1/4"
Height to Top of Door Hinge	73 1/4"
Width	23 1/2"
Installation Clearance	Refer to installation page
Weight (Unit/Carton)	156 lbs / TBD
Carton Dimensions (WxHxD)	25 15/16" x 76 1/16" x 30 3/16"
LIMITED WARRANTY	
Parts & Labour	1 Year
Sealed System	7 Years
Inverter Linear Compressor	10 Years
UPC CODES	
LRONC1414G (Beige Glass)	195174036198

### Customizable Configuration

Allows you to design your space to suit your needs

\*Refrigerator includes brackets that can be used to secure multiple units together



# Installing the products as pairs

(Contact a LG Electronics service center, After initial product installation, all services requested by the customer will be charged.)

## Installation components

Before installing the freezer and refrigerator in pairs, prepare the following components.  
The number of screws may vary according to the model.



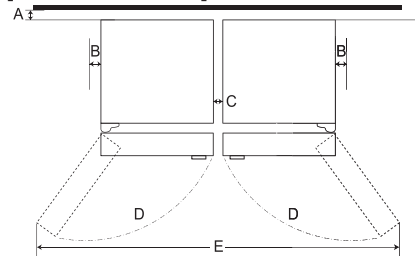
## How to install the product as part of a pair

1. Install the freezer and refrigerator side by side by referring to the basic installation sequence and reference dimensions below.

[Basic installation order]

• When installing 2 units: Freezer-Refrigerator

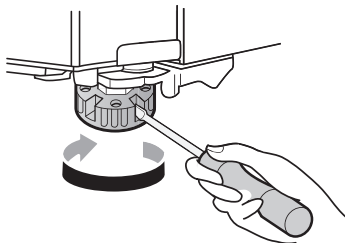
[Reference dimension]



	Dimension (mm)
A	minimum 50
B	50
C	11
D	110°
E	1643

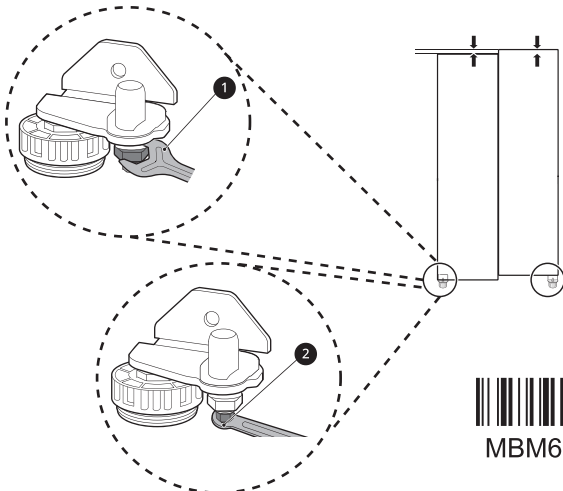
2. If the appliance seems unsteady, or the doors do not close easily, adjust the appliance's tilt using the instructions below.

Turn the leveling leg clockwise to raise that side of the appliance or counterclockwise to lower it.

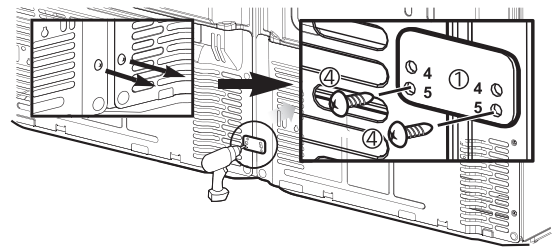


3. If the door of the appliance is not level, adjust the difference in the height of the appliance door.

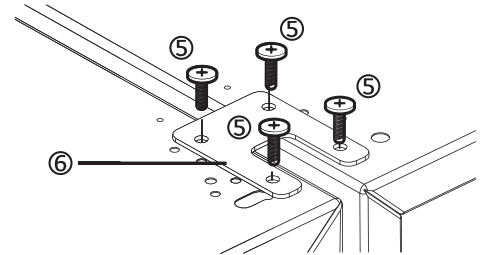
- Open the door and use the spanner (1) to loosen the keeper nut by turning it to the left.
- Use the spanner (2) to adjust the height by turning the adjustment hinge pin to the left or to the right



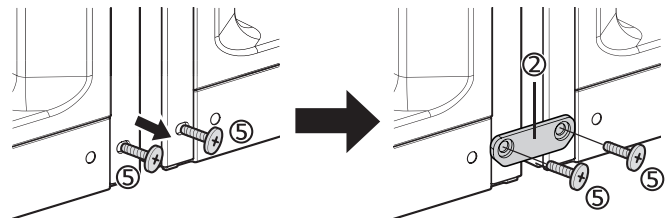
4. Remove the No. (4) screw from the radiation grill in the back of the product. Align the No. (1) bracket frame in the hole in the product and reassemble it using the No. (4) screw.



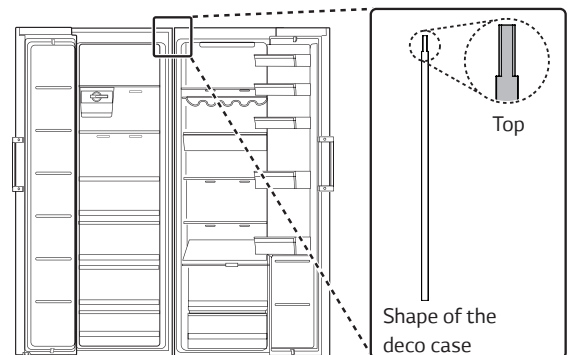
5. Align the No. (6) bracket frame with the hole in the top of the product and assemble it using the No. (5) screw.



6. Remove the No. (5) screw from the bottom of the front of the product. Align the No. (2) bracket frame with the hole in the product and reassemble it using the No. (5) screw.



7. Insert the No. (4) deco cover between the tops of the products. Next, insert the No. (5) deco case between the products (deco cover) slowly, starting from the top, until it is fully fitted.



MBM63936338\_Rev.01