

NAPOLEON

ROGUE® SERIES

GRILL DIFFERENT GO ROGUE.



ROGUE® SERIES

napoleongrills.com



GO ROGUE OR GO HOME.

- ✓ YOU VIEW PERFECT GRILL MARKS AS A BADGE OF HONOR.
- ✓ YOU THINK CUTTING INTO A STEAK TO CHECK DONENESS IS SACRILEGE.
- ✓ YOU KNOW WHEN AND WHY TO USE RUB VS. MARINADE VS. SAUCE.

That's why you are ready for a Napoleon grill. Napoleon takes the art of grilling to a higher level. Every feature, every material is engineered to give ultimate performance - so you can create unforgettable meals and memorable moments. And just like you, we're not some rookie behind the grill. Napoleon is a family-owned company with over 20 passionate years of grill-making experience. Every great meal starts with the best ingredients. Start yours with the best grill out there: Napoleon.



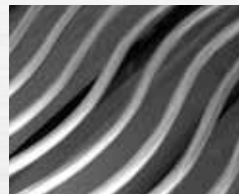
365 2 BURNERS
425 3 BURNERS
525 4 BURNERS



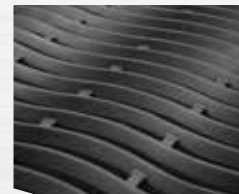
Folding Side Shelves
 (ALL MODELS)



Dual-Level
Stainless Steel Sear Plates



Stainless Steel
Iconic WAVE
 Cooking Grids
 (SIB MODELS)



Porcelainized Cast Iron
Iconic WAVE
 Reversible Channel
 Cooking Grids
 (EXCLUDING SIB MODELS)



Range **Side Burner**
 (SB MODELS)



Infrared
SIZZLE ZONE
 Side Burner
 (SIB MODELS)



365

ROGUE

2 BURNERS



natural gas or propane
up to **37k** btu's



zero to **1800°** exclusive infrared
SIZZLE ZONE Technology
Ready to Grill in **30** Seconds



deliciously serve
up to **20** people



grill to perfection
with up to **2** burners



R365SIB

37,000 BTU's
2 burners plus infrared
SIZZLE ZONE side burner
Cooking Area: 545 in²



45 Minute
Assembly
Time



R365

28,000 BTU's
2 burners
Cooking Area: 460 in²



R365SB

37,000 BTU's
2 burners plus range side burner
Cooking Area: 460 in²

CHARCOAL FLAVOR FROM YOUR GAS GRILL

Napoleon's optional charcoal tray is designed to let you add the fun & flavor of charcoal anytime, on your gas grill. Simply replace sear plates with the charcoal tray, add charcoal and light with your gas burner.

425 ROGUE

3 BURNERS



R425

36,000 BTU's

3 burners

Cooking Area: 535 in'



R425SB

45,000 BTU's

3 burners plus
range side burner

Cooking Area: 535 in'



R425SIB

45,000 BTU's

3 burners plus infrared
SIZZLE ZONE™ side burner

Cooking Area: 625 in'

OPTIONAL
DETACHABLE
STORAGE
BASKET

(Standard on R425SIB)



natural gas or propane
up to **45k** btu's



zero to **1800°** exclusive infrared
SIZZLE ZONE™ Technology
Ready to Grill in **30** Seconds



deliciously serve
up to **26** people



grill to perfection
with up to **3** burners



45 Minute
Assembly
Time

R425SIB

Black Edition



ACCU-PROBE™ TEMPERATURE GAUGE

Safely and instantly read the internal temperature of your grill with the lid closed. This thermometer has a wide temperature measurement range from 0° to 370°C (0° to 700°F) and includes the ideal smoking and searing range.



525

ROGUE

4 BURNERS



natural gas or propane
up to **57k** btu's



zero to **1800°** exclusive infrared
SIZZLE ZONE Technology
Ready to Grill in **30** Seconds



deliciously serve
up to **31** people



grill to perfection
with up to **4** burners



45 Minute
Assembly
Time

R525

48,000 BTU's
4 burners
Cooking Area: 660 in²



R525SIB

57,000 BTU's
4 burners plus infrared
SIZZLE ZONE side burner
Cooking Area: 745 in²

R525SB

57,000 BTU's
4 burners plus
range side burner
Cooking Area: 660 in²



INSTANT JETFIRE™ IGNITION

Napoleon's **JETFIRE™** ignition starts each burner individually for reliable start ups - EVERY time.

UPGRADE YOUR GRILLING ACCESSORIES



Healthy Choice Starter Kit
90003



Meat Tenderizer
55204



Premium Cutting Board and Knife Set
70039



Rectangular Baking Stone
70008



8 Stainless Steel Skewers
70015



Rotisserie Kits



Rotisserie Grill Basket
64000



Wood Chip Starter Kit
67020



Flexible Grill Basket
57012



Cast Iron Charcoal / Smoker Tray
67732



PRO Stainless Steel Rotating Skewer Rack
70014



2 Piece Toolset
70032



NAPOLEON - CELEBRATING OVER 40 YEARS OF HOME COMFORT PRODUCTS



24 Napoleon Rd., Barrie, Ontario, L4M 0G8
103 Miller Drive, Crittenden, Kentucky, USA 41030
7200 Trans Canada Highway, Montreal, Quebec H4T 1A3

PHONE: 866-820-8686
napoleongrills.com
grills@napoleonproducts.com

Approved by Intertek Testing Services to standards in the USA and Canada: ANSI Z21.58 / CSA 1.6 - Outdoor Cooking Gas Appliances. All specifications and designs are subject to change without prior notice due to ongoing product improvements. Consult your owner's manual for complete installation and operating instructions and check all local and national Building Codes and Regulations. Not all features available on all models. Napoleon is a registered trademark of Wolf Steel Group Inc. Images and colors may not be exactly as shown.

Authorized Dealer



Printed in Canada
ADBRRG 05/2018