



SAMSUNG

Samsung Universal Print Driver

사용자 가이드

가능성을 상상



Copyright

© 2009 Samsung Electronics Co., Ltd. All rights reserved.

이 관리자 가이드는 정보 제공을 목적으로 제공됩니다. 이 문서에 포함된 모든 정보는 사전 통보 없이 변경될 수 있습니다. Samsung Electronics는 이 사용 설명서의 사용에 관계된 직접 또는 간접적인 손상, 문제는 책임지지 않습니다.

- Samsung Universal Print Driver는 Samsung Electronics Co., Ltd.의 상표입니다.
- Samsung 및 Samsung 로고는 Samsung Electronics Co., Ltd.의 상표입니다.
- Microsoft, Windows, Internet Explorer 및 Windows Vista는 미국 및 기타 국가에서 Microsoft Corporation의 등록 상표이거나 상표입니다.
- 본 문서의 다른 모든 브랜드, 제품 및 회사 이름은 각 해당사의 상표일 수 있습니다.

REV. 1.01

COPYRIGHT/2

차례 /3

소개

Samsung Universal Print Driver 와 모델별 드라이버 비교	4
시스템 사양	4

SAMSUNG UNIVERSAL PRINT DRIVER 설치 및 제거

Samsung Universal Print Driver 설치	5
Samsung Universal Print Driver 제거	6

SAMSUNG UNIVERSAL PRINT DRIVER 사용

Samsung Universal Print Driver 액세스	7
레이아웃 개요	8
Samsung Universal Print Driver 설정 변경	9
팝업 옵션 설정	9
프린터 검색 옵션 설정	10
인쇄 장치 검색	11
지금 검색	11
프린터 주소 입력	11
새폴더 만들기	12
도움말	13
Samsung Universal Print Driver 로 인쇄	13
기본 인쇄	13
선택한 프린터 변경	13

LICENSE INFORMATION


JPEG License	14
zlib/png License	14
OpenSSL License	14
Boost Software License	14
BSD License	15
Infozip	15
Intel Mobile Platform SDK	15
PNG:The Definitive Guide	16
Open BSD	16
Common Public License Version 1.0 (CPL)	16

찾아보기 /19

소개

Samsung Universal Print Driver는 여러 프린터 모델에서 사용할 수 있는 단일 드라이버입니다. 이 드라이버를 사용하면 개별 드라이버를 다운로드하지 않고도 Samsung 인쇄 장치에 액세스할 수 있을 뿐만 아니라 PDL을 기반으로 한 다른 제조업체의 다양한 장치에 즉시 액세스할 수 있습니다.



- PDL은 PCL과 PS를 모두 의미합니다.
- Samsung은 다른 제조업체의 프린터 장치 및 지원되지 않는 Samsung 모델의 품질을 보장하지는 않습니다. 지원되는 Samsung 장치 목록을 보려면  을 클릭하십시오. 지원되지 않는 Samsung 모델의 경우 드라이버는 사용 가능한 기본 PDL로 자동 설정됩니다.

Samsung Universal Print Driver와 모델별 드라이버 비교

다음 표는 Samsung Universal Print Driver와 제품 기반 드라이버의 차이점을 보여줍니다.

	SAMSUNG UNIVERSAL PRINT DRIVER	모델별 드라이버
사용자 인터페이스	일관된 사용자 인터페이스	일관되지 않은 사용자 인터페이스
설치	<ul style="list-style-type: none"> • Samsung Universal Print Driver와 함께 제공된 설치 프로그램 파일로 다운로드 및 설치합니다. • 설치 프로그램 파일을 실행하여 설치합니다. 	<ul style="list-style-type: none"> • 각 장치 드라이버를 수동으로 찾아서 다운로드하고 설치합니다. • CD 자동 실행 또는 프린터 추가 마법사를 통해 설치합니다.
장치 검색	전체 Samsung 프린터 제품에서 제안된 장치를 쉽게 찾아서 액세스합니다.	수동으로 장치를 검색합니다.
접근성	Samsung 웹 사이트에서 제공됩니다.	장치와 함께 제공된 CD 또는 제품 기반 드라이버에서 사용 가능합니다.

시스템 사양

Samsung Universal Print Driver에 대한 최소 시스템 사양은 다음과 같습니다.

운영 체제	사양 (권장됨)		
	CPU	RAM	사용 가능한 HDD 공간
Windows Vista	Pentium IV 3GHz	512MB (1GB)	15GB
Windows XP	Pentium III 933MHz (Pentium IV 1GHz)	128MB (256MB)	1.5GB 이상
Windows 2000	Pentium II 400MHz (Pentium III 933MHz)	64MB (128MB)	600MB
Windows 7	Pentium IV 1GHz 32-비트 또는 64-비트 프로세서 이상	1GB (2GB)	16GB
		<ul style="list-style-type: none"> • 128MB 메모리 포함 DirectX 9 그래픽 지원 (Aero 테마 사용) • DVD-R/W 드라이브 	
Windows Server 2003	Pentium III 933MHz (Pentium IV 1GHz)	128MB (512MB)	1.25~2GB
Windows Server 2008	Pentium IV 1GHz (Pentium IV 2GHz)	512MB (2GB)	10GB
Windows Server 2008 (R2)	Pentium IV 1GHz (x86) 또는 1.4GHz (x64) 프로세서 (2GHz 이상)	512MB (2GB)	10GB

Samsung Universal Print Driver 설치 및 제거

이 장에서는 Samsung Universal Print Driver를 설치 및 제거하기 위한 단계별 지시사항을 제공합니다.

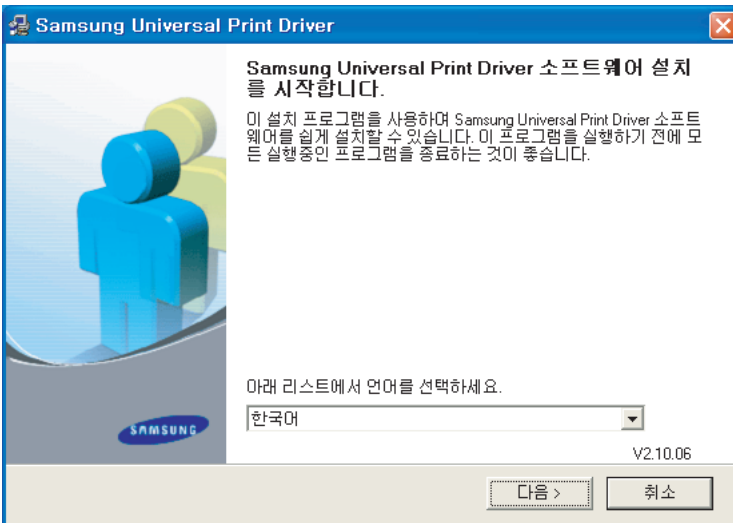


다음은 Windows XP의 PCL 드라이버 창입니다. PS 드라이버 창은 다를 수 있지만, 단계는 같습니다.

Samsung Universal Print Driver 설치

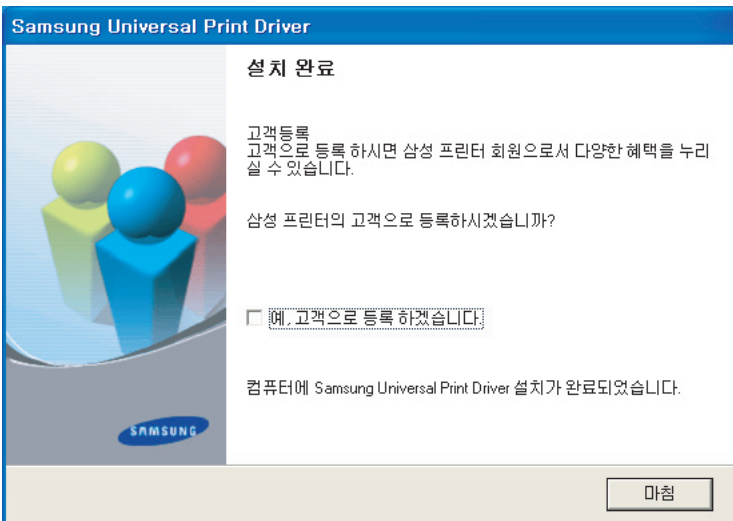
드라이버를 설치하기 전에 시스템에 권장되는 최소 사양을 확인하십시오('시스템 사양' 4쪽 참조).

1. 웹 브라우저를 시작하고 www.samsung.com으로 이동합니다.
2. Samsung Universal Print Driver 설치 파일을 검색합니다.
3. 설치 파일을 시작합니다.
Samsung Universal Print Driver 설치 프로그램 마법사가 열립니다.
4. 다음을 클릭합니다. 필요한 경우, 드롭다운 목록에서 언어를 선택합니다.



설치 창이 열린 후 설치가 완료될 때까지 기다려 주십시오.

5. Setup Completed 창이 열리면 **마침**을 클릭합니다.
설치 완료 창이 열리면 **마침**을 클릭합니다.

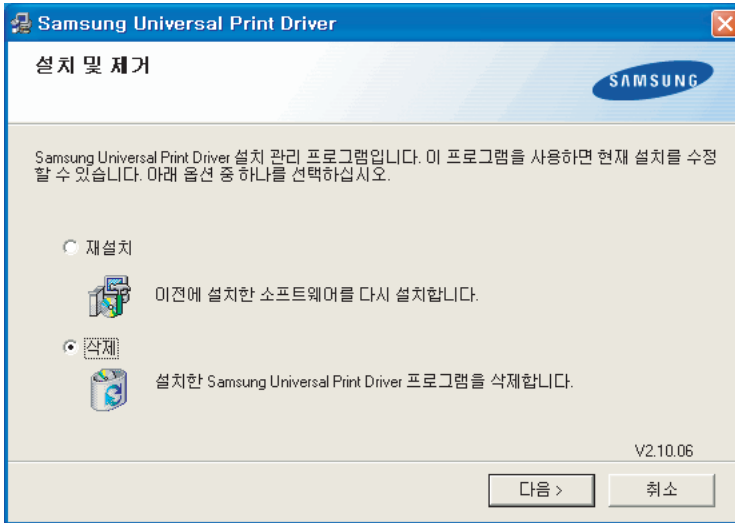


드라이버가 올바르게 설치되었으면 **프린터 및 팩스** 폴더에서 Samsung Universal Print Driver를 찾을 수 있습니다.

Samsung Universal Print Driver 제거

Samsung Universal Print Driver를 제거하려면 다음 단계를 수행하십시오.

1. Windows 시작 메뉴에서 **모든 프로그램 > Samsung Universal Print Driver > 설치 및 제거**를 선택합니다.
Samsung Universal Print Driver 설치 프로그램 마법사가 열립니다.
2. **삭제**를 선택하고 **다음**을 클릭합니다.



3. 삭제할 구성 요소를 선택하고 **다음**을 클릭합니다.
4. 확인 메시지가 나타나면 **예**를 클릭합니다.
5. 제거가 완료되면 **마침**을 클릭합니다.

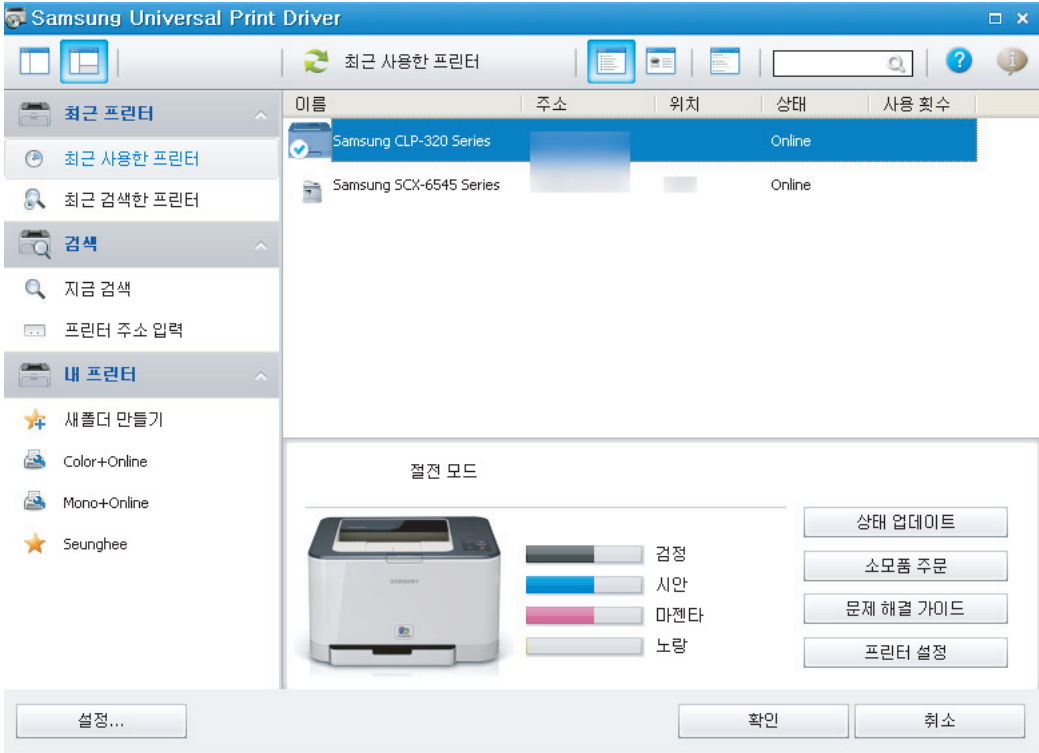
Samsung Universal Print Driver 사용

Samsung Universal Print Driver의 주 목적은 하나의 드라이버(Samsung Universal Print Driver)를 설치하여 다른 인쇄 장치에도 사용하는 것입니다. 그러나 Samsung Universal Print Driver에는 인쇄 장치 검색, 새폴더 만들기 및 장치 상태 확인과 같은 다른 기능도 있습니다.

Samsung Universal Print Driver 액세스

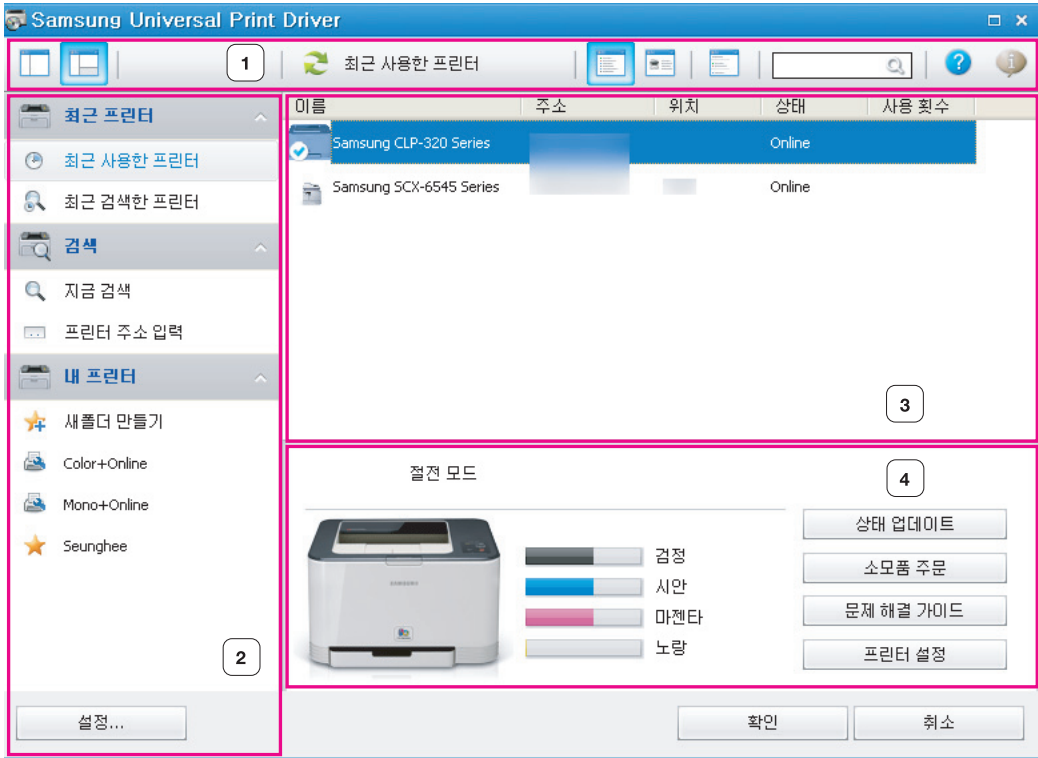
1. Windows 시작 메뉴에서 **프린터 및 팩스**를 선택합니다.
2. Samsung Universal Print Driver를 마우스 오른쪽 단추로 클릭합니다.
3. **인쇄 기본 설정** 또는 **속성**을 클릭합니다.

Samsung Universal Print Driver 창이 열립니다.




최근에 사용된 프린터가 없으면 프린터 검색을 요청하는 팝업 창이 나타납니다. **확인**을 클릭하여 연결된 프린터를 검색합니다.

레이아웃 개요



<p>레이아웃 막대</p> <p>①</p>	<p>표시 옵션을 제공합니다.</p> <ul style="list-style-type: none"> : Samsung Universal Print Driver 창 레이아웃을 선택합니다. 레이아웃2를 선택하고 Samsung 스마트 패널 프로그램을 설치했으면 상태 창(번호 4)을 볼 수 있습니다. : 목록에서 모든 프린터 정보를 새로 고칩니다. : 프린터 목록 보기 유형을 선택합니다. 자세히 보기는 주소, 위치, 상태 및 시스템 이름과 같은 프린터 정보를 나타냅니다. 이미지 보기는 큰 이미지와 함께 프린터 정보를 보여줍니다. 이 옵션은 Windows XP(이상)에서만 지원됩니다. : 그룹에 있는 프린터 목록을 표시합니다. 그룹에 있는 프린터의 순서를 변경하려는 경우 이 버튼을 누릅니다. 이 옵션은 Windows XP(이상)에서만 지원됩니다. <input type="text"/> : 모델 이름과 같은 키워드로 목록에서 프린터를 검색합니다. : 도움말 창을 엽니다. : Samsung Universal Print Driver에 대한 정보를 나타냅니다.
<p>기본 메뉴</p> <p>②</p>	<ul style="list-style-type: none"> 최근 프린터 <ul style="list-style-type: none"> - 최근 사용한 프린터: 최근 사용된 프린터 목록을 나타냅니다. 가장 최근에 사용된 프린터가 목록의 맨 위에 있습니다. - 최근 검색한 프린터: 최근 검색된 프린터 목록을 나타냅니다. 가장 최근에 검색된 프린터가 목록의 맨 위에 있습니다. 검색 <ul style="list-style-type: none"> - 지금 검색: USB 또는 네트워크로 연결된 프린터를 검색합니다. - 프린터 주소 입력: 프린터의 IP 주소로 프린터를 검색합니다. 내 프린터 <ul style="list-style-type: none"> - 새 폴더 만들기: 즐겨찾는 프린터 폴더를 만듭니다. 설정: 팝업 및 검색 옵션을 표시합니다.

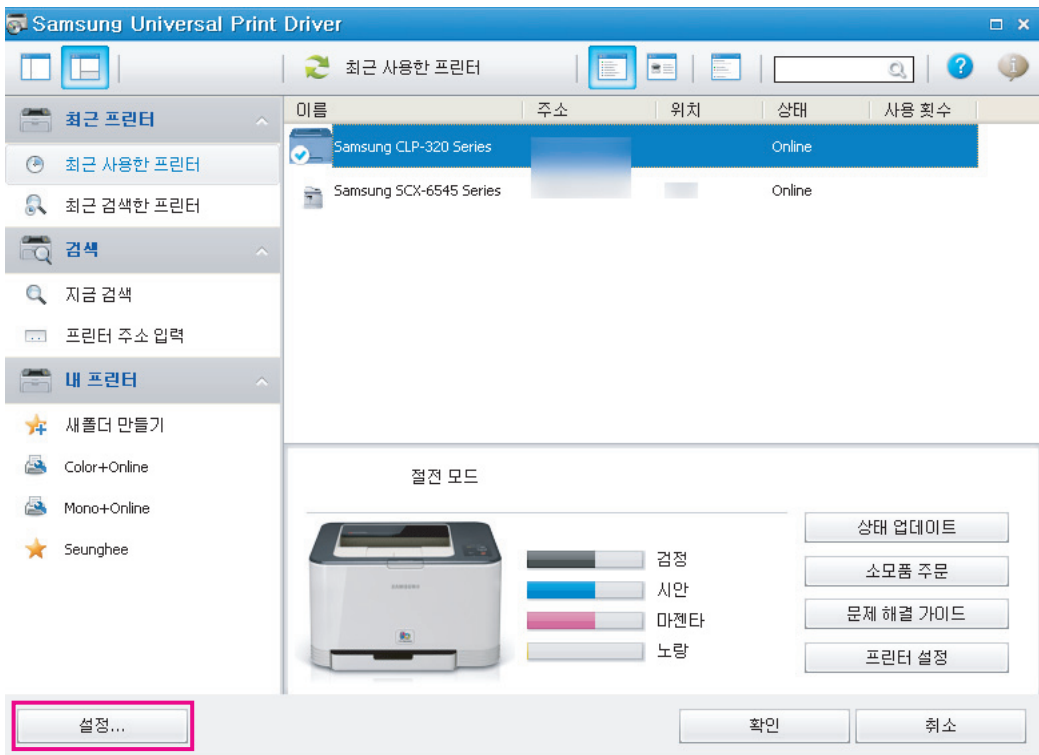
③	프린터 목록	<p>프린터 목록을 나타냅니다. 레이아웃 막대에 있는  버튼을 누르면 그룹에 있는 프린터의 순서를 변경할 수 있습니다. 프린트 목록 영역에서 마우스 오른쪽 버튼을 클릭하십시오. 그룹 배열 옵션을 선택하십시오.</p> <ul style="list-style-type: none"> • 온라인/알 수 없음: 장치의 현재 상태에 따라 그룹을 배열합니다. • 날짜: 오늘, 어제, 이번 주, 이번 달 등과 같이 프린터의 최근 사용 날짜에 따라 그룹을 배열합니다. • 컬러/모노: 기계의 유형이 컬러 프린터 또는 흑백 프린터인지에 따라 그룹을 배열합니다. • 양면/단면: 기계가 양면 기능인지 여부에 따라 그룹을 배열합니다.
④	상태 창	<p>목록에서 선택된 프린터의 상태를 나타냅니다. 이 창을 보려면 레이아웃2를 선택하고 Samsung 스마트 패널 프로그램을 설치해야 합니다.</p> <ul style="list-style-type: none"> • 지금 업데이트: 선택한 프린터의 정보를 업데이트합니다. • 소모품 주문: 소모품을 구입할 수 있는 웹 사이트를 엽니다. • 문제 해결 가이드: 사용자 설명서의 문제 해결 장을 엽니다. 문제 해결 가이드를 보려면 사용 중인 모델의 스마트 패널을 설치해야 합니다. • 프린터 설정: SyncThru Web Service를 열면 프린터를 구성 및 관리할 수 있는 옵션이 제공됩니다. 이 옵션은 네트워크 프린터에서만 사용할 수 있습니다.

Samsung Universal Print Driver 설정 변경

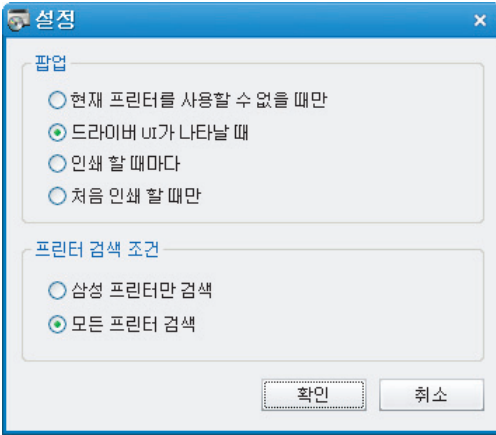
팝업 옵션 설정

인쇄할 때 Samsung Universal Print Driver 창이 나타나게 설정할 수 있습니다. 이 창이 팝업하기 위한 4가지 옵션이 있습니다.

1. 왼쪽 하단에 있는 **설정** 단추를 클릭합니다.



2. 아래 팝업 옵션이 나타납니다.



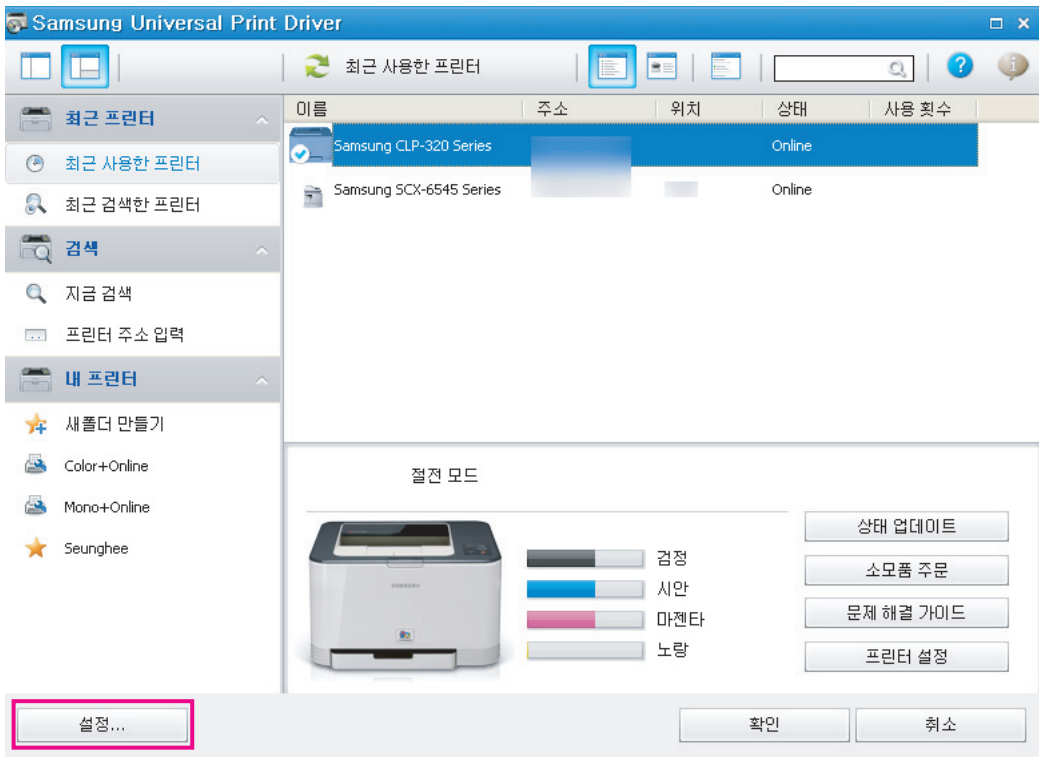
- **현재 프린터를 사용할 수 없을 때만:** Samsung Universal Print Driver 창이 마지막으로 사용한 프린터를 사용할 수 없는 경우에만 나타납니다.
- **드라이버 비가 나타날 때:** 인쇄 기본 설정(속성) 창을 열면 Samsung Universal Print Driver 창이 나타납니다.
- **인쇄할 때마다:** Samsung Universal Print Driver 창이 인쇄할 때마다 나타납니다.
- **처음 인쇄 할 때만:** Samsung Universal Print Driver 창이 응용 프로그램에서 Samsung Universal Print Driver를 프린터로 처음 선택할 때만 나타납니다.

3. 확인을 클릭합니다.

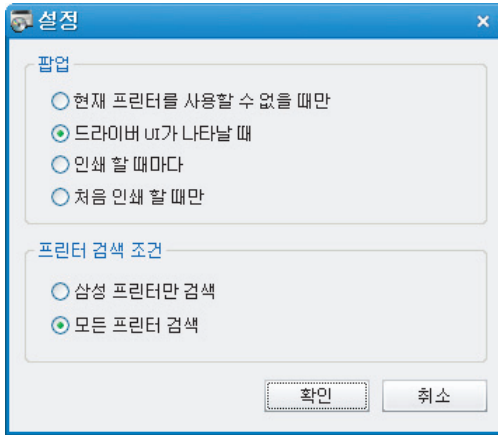
프린터 검색 옵션 설정



Samsung Universal Print Driver에 대한 검색 옵션을 설정하려면 다음 단계를 수행하십시오.

1. 왼쪽 하단에 있는 **설정** 단추를 클릭합니다.



2. 아래 프린터 검색 조건이 나타납니다.




- **삼성 프린터 검색:** 삼성 프린터가 연결된 경우만 검색.
 지원되는 Samsung 장치 목록을 보려면  을 클릭하십시오.
- **모든 프린터 검색:** 연결된 모든 프린터를 검색합니다.

3. **확인**을 클릭합니다.

인쇄 장치 검색

지금 검색

사용할 인쇄 장치의 TCP/IP 주소를 모르면 **지금 검색** 옵션을 사용하여 장치를 검색할 수 있습니다. 다음 단계를 수행하십시오.

1. Windows **시작** 메뉴에서 **프린터 및 팩스**를 선택합니다.
2. Samsung Universal Print Driver를 마우스 오른쪽 단추로 클릭합니다.
3. **인쇄 기본 설정** 또는 **속성**을 클릭합니다.
Samsung Universal Print Driver 창이 열립니다.
4. **지금 검색**을 클릭합니다.
Samsung Universal Print Driver가 연결된 인쇄 장치를 검색합니다.
 검색 결과는 선택한 검색 옵션에 따라 달라질 수 있습니다('프린터 검색 옵션 설정' 10쪽 참조).

프린터 주소 입력

사용할 인쇄 장치의 TCP/IP 주소를 알고 있으면 TCP/IP 주소를 입력하여 장치를 검색할 수 있습니다. 또한 시작 및 끝 IP 주소를 입력하여 IP 주소의 범위에서 장치를 검색할 수 있습니다. 다음 단계를 수행하십시오.

1. Windows **시작** 메뉴에서 **프린터 및 팩스**를 선택합니다.
2. Samsung Universal Print Driver를 마우스 오른쪽 단추로 클릭합니다.
3. **인쇄 기본 설정** 또는 **속성**을 클릭합니다.
Samsung Universal Print Driver 창이 열립니다.
4. **프린터 주소 입력**을 클릭합니다.
창이 나타납니다.
5. 검색하려는 지정된 IP 주소를 입력하거나 IP 주소의 범위를 검색하여 시작 및 끝 주소를 입력합니다.
6. **검색**을 클릭합니다.

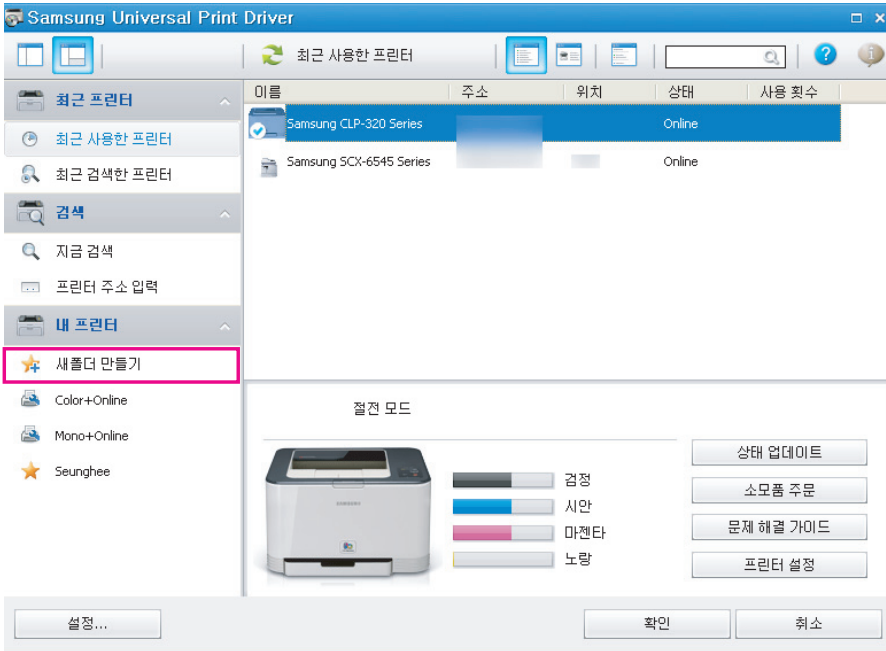
새폴더 만들기

가장 많이 사용하는 프린터를 포함하는 폴더를 만들어 편리하게 사용할 수 있습니다. 예를 들어, 집과 직장 사이를 이동할 경우 두 개의 프린터 폴더(집과 직장)를 만들어 필요에 따라 프린터를 관리할 수 있습니다.

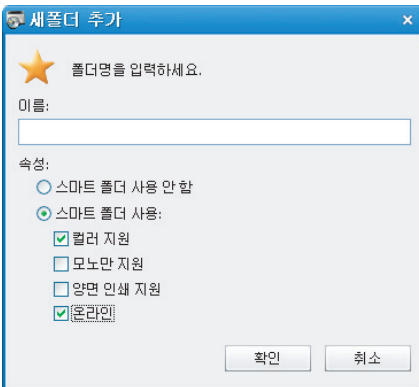
새폴더를 만들려면 다음 단계를 수행하십시오.

1. 새폴더 만들기를 클릭합니다.

새폴더 추가 창이 나타납니다.



2. 폴더 이름을 입력하고 속성을 설정합니다.



- **스마트 폴더 사용 안 함:** 일반 폴더를 추가합니다.



내 프린터 아래 폴더에 프린터를 추가하려면 목록에서 해당 폴더로 프린터를 끌어다 놓거나 목록에서 프린터를 마우스 오른쪽 단추로 클릭한 다음 **이동** 또는 **복사**를 선택하십시오.

- **스마트 폴더 사용:** 특정 폴더를 추가하여 다음 속성과 일치하는 프린터를 동적으로 표시합니다.

- 컬러 지원
- 모노만 지원
- 양면 인쇄 지원
- 온라인: 현재 상태가 온라인인 장치를 포함합니다.



스마트 필터를 사용하는 폴더는 자동으로 장치를 스캔하여 사용자가 수동으로 폴더에 프린터를 추가/제거할 수 없습니다.

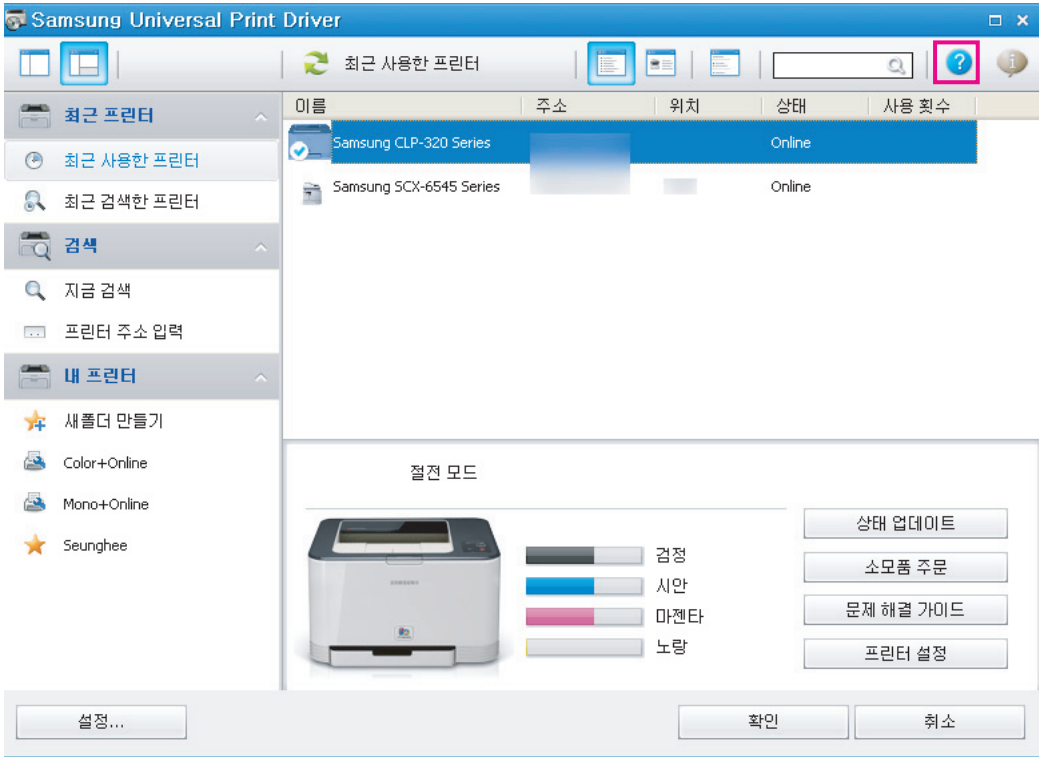
3. 확인을 클릭합니다.

내 프린터 아래에 새폴더가 추가됩니다.

도움말

Samsung Universal Print Driver 창의 오른쪽 상단에 있는 도움말 단추(?)를 클릭하십시오.


도움말 창이 나타납니다. 이 도움말을 통해 Samsung Universal Print Driver 사용 관련 질문에 대한 답변을 얻을 수 있습니다.



Samsung Universal Print Driver로 인쇄

기본 인쇄

Samsung Universal Print Driver를 사용하여 문서를 인쇄하려면 다음 단계를 수행하십시오.

 다음 단계는 메오장에서 인쇄하는 과정을 나타냅니다. 사용 중인 응용 프로그램에 따라 메뉴 이름이 다를 수 있습니다.

1. 응용 프로그램에서 인쇄할 파일을 엽니다.
2. 메뉴 표시줄에서 **파일 > 인쇄**를 선택합니다.
3. 프린터 목록에서 Samsung Universal Print Driver를 선택합니다.
4. **확인**을 클릭합니다. 인쇄가 시작됩니다.

또는 선택한 팝업 옵션('팝업 옵션 설정' 9쪽 참조)에 따라 인쇄하기 전에 Samsung Universal Print Driver 창이 나타날 수 있습니다. 인쇄할 때 사용할 프린터를 선택합니다.

선택한 프린터 변경

1. Windows 시작 메뉴에서 **프린터 및 팩스**를 선택합니다.
2. Samsung Universal Print Driver를 마우스 오른쪽 단추로 클릭합니다.
3. **인쇄 기본 설정** 또는 **속성**을 클릭합니다.
인쇄 기본 설정(속성) 창이 열립니다.
4. 프린터 목록에서 다른 프린터를 선택하거나 검색하여 선택합니다('인쇄 장치 검색' 11쪽 참조).
5. **확인**을 클릭합니다. 모든 후속 인쇄는 새 프린터로 전송됩니다.

License Information

JPEG License

This software is based in part on the work of the Independent JPEG Group.

zlib/png License

This product uses software program which is distributed under the zlib/png license.

OpenSSL License

This product includes software developed by the OpenSSL Project for use in the OpenSSL Toolkit (<http://www.openssl.org/>).

Copyright (c) 1998–2008 The OpenSSL Project. All rights reserved.

Redistribution and use in source and binary forms, with or without modification, are permitted provided that the following conditions are met: Redistributions of source code must retain the above copyright notice, this list of conditions and the following disclaimer.

1. Redistributions in binary form must reproduce the above copyright notice, this list of conditions and the following disclaimer in the documentation and/or other materials provided with the distribution.
2. All advertising materials mentioning features or use of this software must display the following acknowledgment:
3. "This product includes software developed by the OpenSSL Project for use in the OpenSSL Toolkit. (<http://www.openssl.org/>)"
4. The names "OpenSSL Toolkit" and "OpenSSL Project" must not be used to endorse or promote products derived from this software without prior written permission. For written permission, please contact openssl-core@openssl.org.
5. Products derived from this software may not be called "OpenSSL" nor may "OpenSSL" appear in their names without prior written permission of the OpenSSL Project.
6. Redistributions of any form whatsoever must retain the following acknowledgment: "This product includes software developed by the OpenSSL Project for use in the OpenSSL Toolkit (<http://www.openssl.org/>)"

THIS SOFTWARE IS PROVIDED BY THE OpenSSL PROJECT "AS IS" AND ANY EXPRESSED OR IMPLIED WARRANTIES, INCLUDING, BUT NOT LIMITED TO, THE IMPLIED WARRANTIES OF MERCHANTABILITY AND FITNESS FOR A PARTICULAR PURPOSE ARE DISCLAIMED. IN NO EVENT SHALL THE OpenSSL PROJECT OR ITS CONTRIBUTORS BE LIABLE FOR ANY DIRECT, INDIRECT, INCIDENTAL, SPECIAL, EXEMPLARY, OR CONSEQUENTIAL DAMAGES (INCLUDING, BUT NOT LIMITED TO, PROCUREMENT OF SUBSTITUTE GOODS OR SERVICES; LOSS OF USE, DATA, OR PROFITS; OR BUSINESS INTERRUPTION) HOWEVER CAUSED AND ON ANY THEORY OF LIABILITY, WHETHER IN CONTRACT, STRICT LIABILITY, OR TORT (INCLUDING NEGLIGENCE OR OTHERWISE) ARISING IN ANY WAY OUT OF THE USE OF THIS SOFTWARE, EVEN IF ADVISED OF THE POSSIBILITY OF SUCH DAMAGE.

This product includes cryptographic software written by Eric Young (ey@cryptsoft.com). This product includes software written by Tim Hudson (tjh@cryptsoft.com).

Boost Software License

This product uses software program which is distributed under the BSL license.

Boost Software License 1.0 (BSL1.0)

Tue, 2008-02-05 16:36 ? nelson

Permission is hereby granted, free of charge, to any person or organization obtaining a copy of the software and accompanying documentation covered by this license (the "Software") to use, reproduce, display, distribute, execute, and transmit the Software, and to prepare derivative works of the Software, and to permit third-parties to whom the Software is furnished to do so, all subject to the following:

The copyright notices in the Software and this entire statement, including the above license grant, this restriction and the following disclaimer, must be included in all copies of the Software, in whole or in part, and all derivative works of the Software, unless such copies or derivative works are solely in the form of machine-executable object code generated by a source language processor.

THE SOFTWARE IS PROVIDED "AS IS", WITHOUT WARRANTY OF ANY KIND, EXPRESS OR IMPLIED, INCLUDING BUT NOT LIMITED TO THE WARRANTIES OF MERCHANTABILITY, FITNESS FOR A PARTICULAR PURPOSE, TITLE AND NON-INFRINGEMENT. IN NO EVENT SHALL THE COPYRIGHT HOLDERS OR ANYONE DISTRIBUTING THE

SOFTWARE BE LIABLE FOR ANY DAMAGES OR OTHER LIABILITY, WHETHER IN CONTRACT, TORT OR OTHERWISE, ARISING FROM, OUT OF OR IN CONNECTION WITH THE SOFTWARE OR THE USE OR OTHER DEALINGS IN THE SOFTWARE.

BSD License

This product uses software programs which are distributed under the BSD license. BSD license SW : PNG:The Definitive Guide, Intel Mobile Platform SDK, Info-zip.

Infozip

This is version 2007-Mar-4 of the Info-ZIP license. The definitive version of this document should be available at <ftp://ftp.info-zip.org/pub/infozip/license.html> indefinitely and a copy at <http://www.info-zip.org/pub/infozip/license.html>.

Copyright (c) 1990-2007 Info-ZIP. All rights reserved.

For the purposes of this copyright and license, "Info-ZIP" is defined as the following set of individuals:

Mark Adler, John Bush, Karl Davis, Harald Denker, Jean-Michel Dubois, Jean-loup Gailly, Hunter Goatley, Ed Gordon, Ian Gorman, Chris Herborth, Dirk Haase, Greg Hartwig, Robert Heath, Jonathan Hudson, Paul Kienitz, David Kirschbaum, Johnny Lee, Onno van der Linden, Igor Mandrichenko, Steve P. Miller, Sergio Monesi, Keith Owens, George Petrov, Greg Roelofs, Kai Uwe Rommel, Steve Salisbury, Dave Smith, Steven M. Schweda, Christian Spieler, Cosmin Truta, Antoine Verheijen, Paul von Behren, Rich Wales, Mike White. This software is provided "as is," without warranty of any kind, express or implied. In no event shall Info-ZIP or its contributors be held liable for any direct, indirect, incidental, special or consequential damages arising out of the use of or inability to use this software.

Permission is granted to anyone to use this software for any purpose, including commercial applications, and to alter it and redistribute it freely, subject to the above disclaimer and the following restrictions:

- Redistributions of source code (in whole or in part) must retain the above copyright notice, definition, disclaimer, and this list of conditions.
- Redistributions in binary form (compiled executables and libraries) must reproduce the above copyright notice, definition, disclaimer, and this list of conditions in documentation and/or other materials provided with the distribution. The sole exception to this condition is redistribution of a standard UnZipSFX binary (including SFXWiz) as part of a self-extracting archive: that is permitted without inclusion of this license, as long as the normal SFX banner has not been removed from the binary or disabled.
- Altered versions--including, but not limited to, ports to new operating systems, existing ports with new graphical interfaces, versions with modified or added functionality, and dynamic, shared, or static library versions not from Info-ZIP--must be plainly marked as such and must not be misrepresented as being the original source or, if binaries, compiled from the original source. Such altered versions also must not be misrepresented as being Info-ZIP releases--including, but not limited to, labeling of the altered versions with the names "Info-ZIP" (or any variation thereof, including, but not limited to, different capitalizations), "Pocket UnZip," "Wiz" or "MacZip" without the explicit permission of Info-ZIP. Such altered versions are further prohibited from misrepresentative use of the Zip-Bugs or Info-ZIP e-mail addresses or the Info-ZIP URL(s), such as to imply Info-ZIP will provide support for the altered versions.
- Info-ZIP retains the right to use the names "Info-ZIP," "Zip," "UnZip," "UnZipSFX," "Wiz," "Pocket UnZip," "Pocket Zip," and "MacZip" for its own source and binary releases.

Intel Mobile Platform SDK

Copyright (c) <2008>, Intel Corp. All rights reserved.

Redistribution and use in source and binary forms, with or without modification, are permitted provided that the following conditions are met:

- Redistributions of source code must retain the above copyright notice, this list of conditions and the following disclaimer.
- Redistributions in binary form must reproduce the above copyright notice, this list of conditions and the following disclaimer in the documentation and/or other materials provided with the distribution.
- Neither the name of Intel Corporation nor the names of its contributors may be used to endorse or promote products derived from this software without specific prior written permission.

THIS SOFTWARE IS PROVIDED BY THE COPYRIGHT HOLDERS AND CONTRIBUTORS "AS IS" AND ANY EXPRESS OR IMPLIED WARRANTIES, INCLUDING, BUT NOT LIMITED TO, THE IMPLIED WARRANTIES OF MERCHANTABILITY AND FITNESS FOR A PARTICULAR PURPOSE ARE DISCLAIMED. IN NO EVENT SHALL THE COPYRIGHT OWNER OR CONTRIBUTORS BE LIABLE FOR ANY DIRECT, INDIRECT, INCIDENTAL, SPECIAL, EXEMPLARY, OR CONSEQUENTIAL DAMAGES (INCLUDING, BUT NOT LIMITED TO, PROCUREMENT OF SUBSTITUTE GOODS OR SERVICES; LOSS OF USE, DATA, OR PROFITS; OR BUSINESS INTERRUPTION) HOWEVER CAUSED AND ON ANY THEORY OF LIABILITY, WHETHER IN CONTRACT, STRICT LIABILITY, OR TORT (INCLUDING NEGLIGENCE OR OTHERWISE) ARISING IN ANY WAY OUT OF THE USE OF THIS SOFTWARE, EVEN IF ADVISED OF THE POSSIBILITY OF SUCH DAMAGE.

PNG: The Definitive Guide

Copyright (c) 1998–2001 Greg Roelofs. All rights reserved.

This software is provided "as is," without warranty of any kind, express or implied. In no event shall the author or contributors be held liable for any damages arising in any way from the use of this software. Permission is granted to anyone to use this software for any purpose, including commercial applications, and to alter it and redistribute it freely, subject to the following restrictions:

- Redistributions of source code must retain the above copyright notice, disclaimer, and this list of conditions.
- Redistributions in binary form must reproduce the above copyright notice, disclaimer, and this list of conditions in the documentation and/or other materials provided with the distribution.
- All advertising materials mentioning features or use of this software must display the following acknowledgment:

This product includes software developed by Greg Roelofs and contributors for the book, "PNG: The Definitive Guide," published by O'Reilly and Associates.

Open BSD

Copyright (c) 2004 by Internet Systems Consortium, Inc. ("ISC")

Copyright (c) 1996,1999 by Internet Software Consortium.

Permission to use, copy, modify, and distribute this software for any purpose with or without fee is hereby granted, provided that the above copyright notice and this permission notice appear in all copies.

THE SOFTWARE IS PROVIDED "AS IS" AND ISC DISCLAIMS ALL WARRANTIES WITH REGARD TO THIS SOFTWARE INCLUDING ALL IMPLIED WARRANTIES OF MERCHANTABILITY AND FITNESS. IN NO EVENT SHALL ISC BE LIABLE FOR ANY SPECIAL, DIRECT, INDIRECT, OR CONSEQUENTIAL DAMAGES OR ANY DAMAGES WHATSOEVER RESULTING FROM LOSS OF USE, DATA OR PROFITS, WHETHER IN AN ACTION OF CONTRACT, NEGLIGENCE OR OTHER TORTIOUS ACTION, ARISING OUT OF OR IN CONNECTION WITH THE USE OR PERFORMANCE OF THIS SOFTWARE.

Common Public License Version 1.0 (CPL)

This product uses software program which is distributed under the CPL license. The following CPL software source codes that have been used in this product can be provided after asking to oss.request@samsung.com. CPL software : WTL(Windows Template Library)

THE ACCOMPANYING PROGRAM IS PROVIDED UNDER THE TERMS OF THIS COMMON PUBLIC LICENSE ("AGREEMENT"). ANY USE, REPRODUCTION OR DISTRIBUTION OF THE PROGRAM CONSTITUTES RECIPIENT'S ACCEPTANCE OF THIS AGREEMENT.

1. DEFINITIONS

"Contribution" means:

- a. in the case of the initial Contributor, the initial code and documentation distributed under this Agreement, and
- b. in the case of each subsequent Contributor:
 - changes to the Program, and
 - additions to the Program;

where such changes and/or additions to the Program originate from and are distributed by that particular Contributor. A Contribution 'originates' from a Contributor if it was added to the Program by such Contributor itself or anyone acting on such Contributor's behalf. Contributions do not include additions to the Program which: (i) are separate modules of software distributed in conjunction with the Program under their own license agreement, and (ii) are not derivative works of the Program.

"Contributor" means any person or entity that distributes the Program.

"Licensed Patents " mean patent claims licensable by a Contributor which are necessarily infringed by the use or sale of its Contribution alone or when combined with the Program.

"Program" means the Contributions distributed in accordance with this Agreement.

"Recipient" means anyone who receives the Program under this Agreement, including all Contributors.

2. GRANT OF RIGHTS

- a. Subject to the terms of this Agreement, each Contributor hereby grants Recipient a non-exclusive, worldwide, royalty-free copyright license to reproduce, prepare derivative works of, publicly display, publicly perform, distribute and sublicense the Contribution of such Contributor, if any, and such derivative works, in source code and object code form.
- b. Subject to the terms of this Agreement, each Contributor hereby grants Recipient a non-exclusive, worldwide, royalty-free patent license under Licensed Patents to make, use, sell, offer to sell, import and otherwise transfer the Contribution of such Contributor, if any, in source code and object code form. This patent license shall apply to the combination of the Contribution and the Program if, at the time the Contribution is added by the Contributor, such addition of the Contribution causes such combination to be covered by the Licensed Patents. The patent license shall not apply to any other combinations which include the Contribution. No hardware per se is licensed hereunder.

- c. Recipient understands that although each Contributor grants the licenses to its Contributions set forth herein, no assurances are provided by any Contributor that the Program does not infringe the patent or other intellectual property rights of any other entity. Each Contributor disclaims any liability to Recipient for claims brought by any other entity based on infringement of intellectual property rights or otherwise. As a condition to exercising the rights and licenses granted hereunder, each Recipient hereby assumes sole responsibility to secure any other intellectual property rights needed, if any. For example, if a third party patent license is required to allow Recipient to distribute the Program, it is Recipient's responsibility to acquire that license before distributing the Program.
- d. Each Contributor represents that to its knowledge it has sufficient copyright rights in its Contribution, if any, to grant the copyright license set forth in this Agreement.

3. REQUIREMENTS

A Contributor may choose to distribute the Program in object code form under its own license agreement, provided that:

- a. it complies with the terms and conditions of this Agreement; and
- b. its license agreement:
 - effectively disclaims on behalf of all Contributors all warranties and conditions, express and implied, including warranties or conditions of title and non-infringement, and implied warranties or conditions of merchantability and fitness for a particular purpose;
 - effectively excludes on behalf of all Contributors all liability for damages, including direct, indirect, special, incidental and consequential damages, such as lost profits;
 - states that any provisions which differ from this Agreement are offered by that Contributor alone and not by any other party; and
 - states that source code for the Program is available from such Contributor, and informs licensees how to obtain it in a reasonable manner on or through a medium customarily used for software exchange.

When the Program is made available in source code form:

- a. it must be made available under this Agreement; and
- b. a copy of this Agreement must be included with each copy of the Program.

Contributors may not remove or alter any copyright notices contained within the Program. Each Contributor must identify itself as the originator of its Contribution, if any, in a manner that reasonably allows subsequent Recipients to identify the originator of the Contribution.

4. COMMERCIAL DISTRIBUTION

Commercial distributors of software may accept certain responsibilities with respect to end users, business partners and the like. While this license is intended to facilitate the commercial use of the Program, the Contributor who includes the Program in a commercial product offering should do so in a manner which does not create potential liability for other Contributors. Therefore, if a Contributor includes the Program in a commercial product offering, such Contributor ("Commercial Contributor") hereby agrees to defend and indemnify every other Contributor ("Indemnified Contributor") against any losses, damages and costs (collectively "Losses") arising from claims, lawsuits and other legal actions brought by a third party against the Indemnified Contributor to the extent caused by the acts or omissions of such Commercial Contributor in connection with its distribution of the Program in a commercial product offering. The obligations in this section do not apply to any claims or Losses relating to any actual or alleged intellectual property infringement. In order to qualify, an Indemnified Contributor must: a) promptly notify the Commercial Contributor in writing of such claim, and b) allow the Commercial Contributor to control, and cooperate with the Commercial Contributor in, the defense and any related settlement negotiations. The Indemnified Contributor may participate in any such claim at its own expense.

For example, a Contributor might include the Program in a commercial product offering, Product X. That Contributor is then a Commercial Contributor. If that Commercial Contributor then makes performance claims, or offers warranties related to Product X, those performance claims and warranties are such Commercial Contributor's responsibility alone. Under this section, the Commercial Contributor would have to defend claims against the other Contributors related to those performance claims and warranties, and if a court requires any other Contributor to pay any damages as a result, the Commercial Contributor must pay those damages.

5. NO WARRANTY

EXCEPT AS EXPRESSLY SET FORTH IN THIS AGREEMENT, THE PROGRAM IS PROVIDED ON AN "AS IS" BASIS, WITHOUT WARRANTIES OR CONDITIONS OF ANY KIND, EITHER EXPRESS OR IMPLIED INCLUDING, WITHOUT LIMITATION, ANY WARRANTIES OR CONDITIONS OF TITLE, NON-INFRINGEMENT, MERCHANTABILITY OR FITNESS FOR A PARTICULAR PURPOSE. Each Recipient is solely responsible for determining the appropriateness of using and distributing the Program and assumes all risks associated with its exercise of rights under this Agreement, including but not limited to the risks and costs of program errors, compliance with applicable laws, damage to or loss of data, programs or equipment, and unavailability or interruption of operations.

6. DISCLAIMER OF LIABILITY

EXCEPT AS EXPRESSLY SET FORTH IN THIS AGREEMENT, NEITHER RECIPIENT NOR ANY CONTRIBUTORS SHALL HAVE ANY LIABILITY FOR ANY DIRECT, INDIRECT, INCIDENTAL, SPECIAL, EXEMPLARY, OR CONSEQUENTIAL DAMAGES (INCLUDING WITHOUT LIMITATION LOST PROFITS), HOWEVER CAUSED AND ON

ANY THEORY OF LIABILITY, WHETHER IN CONTRACT, STRICT LIABILITY, OR TORT (INCLUDING NEGLIGENCE OR OTHERWISE) ARISING IN ANY WAY OUT OF THE USE OR DISTRIBUTION OF THE PROGRAM OR THE EXERCISE OF ANY RIGHTS GRANTED HEREUNDER, EVEN IF ADVISED OF THE POSSIBILITY OF SUCH DAMAGES.

7. GENERAL

If any provision of this Agreement is invalid or unenforceable under applicable law, it shall not affect the validity or enforceability of the remainder of the terms of this Agreement, and without further action by the parties hereto, such provision shall be reformed to the minimum extent necessary to make such provision valid and enforceable. If Recipient institutes patent litigation against a Contributor with respect to a patent applicable to software (including a cross-claim or counterclaim in a lawsuit), then any patent licenses granted by that Contributor to such Recipient under this Agreement shall terminate as of the date such litigation is filed. In addition, if Recipient institutes patent litigation against any entity (including a cross-claim or counterclaim in a lawsuit) alleging that the Program itself (excluding combinations of the Program with other software or hardware) infringes such Recipient's patent(s), then such Recipient's rights granted under Section 2(b) shall terminate as of the date such litigation is filed. All Recipient's rights under this Agreement shall terminate if it fails to comply with any of the material terms or conditions of this Agreement and does not cure such failure in a reasonable period of time after becoming aware of such noncompliance. If all Recipient's rights under this Agreement terminate, Recipient agrees to cease use and distribution of the Program as soon as reasonably practicable. However, Recipient's obligations under this Agreement and any licenses granted by Recipient relating to the Program shall continue and survive. Everyone is permitted to copy and distribute copies of this Agreement, but in order to avoid inconsistency the Agreement is copyrighted and may only be modified in the following manner. The Agreement Steward reserves the right to publish new versions (including revisions) of this Agreement from time to time. No one other than the Agreement Steward has the right to modify this Agreement. IBM is the initial Agreement Steward. IBM may assign the responsibility to serve as the Agreement Steward to a suitable separate entity. Each new version of the Agreement will be given a distinguishing version number. The Program (including Contributions) may always be distributed subject to the version of the Agreement under which it was received. In addition, after a new version of the Agreement is published, Contributor may elect to distribute the Program (including its Contributions) under the new version. Except as expressly stated in Sections 2(a) and 2(b) above, Recipient receives no rights or licenses to the intellectual property of any Contributor under this Agreement, whether expressly, by implication, estoppel or otherwise. All rights in the Program not expressly granted under this Agreement are reserved. This Agreement is governed by the laws of the State of New York and the intellectual property laws of the United States of America. No party to this Agreement will bring a legal action under this Agreement more than one year after the cause of action arose. Each party waives its rights to a jury trial in any resulting litigation.

찾아보기

O

open source information 14

S

Search by address 11

Search Now 11

ㄱ

검색

TCPIP 11

지금 검색 버튼 11

프린터 주소 입력 버튼 11

ㄹ

레이아웃 8

ㅅ

사용 7

설정 9

검색 옵션 10

팝업 창 9

설치 5

소개 4

시스템 사양 4

ㅇ

액세스 7

인쇄 13

ㅈ

저작권 2

제거 6

ㅊ

차이점 4

표

폴더 12