

SHARP®

Simply Better Living

Smart Combi Steam Oven

SSC2489GS

1.1
CU. FT.

24"
WIDTH

works with alexa



The First Smart Combi Steam Oven by Sharp® that Works with Alexa

Cooks with Superheated Steam and Convection for restaurant quality results at home

Air Fry up to 485°F

Built-In Ready 24" Oven Can Be Installed in a Wall, Under-the-Counter or Kitchen Island With No Additional Trim Kit Needed

No Plumbing Required, Standard 120V Power

Brilliant LCD Display with Touch Navigation



INDULGE YOUR INNER CHEF

The Sharp Smart Combi Steam Oven is the start of a cooking revolution in your home. Commercial combi ovens have been in the restaurant industry for decades, and now Sharp is helping to bring that technology into your smart home.

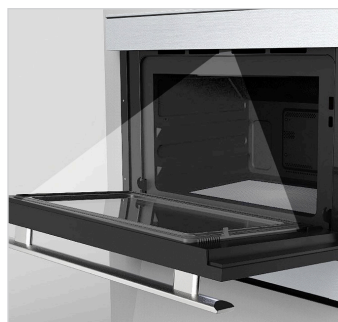
The Sharp SSC2489GS combines convection heat and superheated steam to Grill, Bake, and Roast with nine cooking modes. You can grill without smoke, roast without drying, and your food is crispy on the outside, tender, and juicy on the inside. Indulge your inner chef with specialized settings like Steam Bake for artisanal breads and Water Bath for creamy desserts, such as cheesecake, pudding and custard, that normally require a water bath method, without the need to handle hot pans of water.

Since the Sharp Smart Combi Steam Oven Works with Alexa, you can have your very own sous chef! Just ask Alexa, "Alexa, Roast at 485 degrees for 40 minutes in the oven." How's that for Simply Better Living?

Cleanup is a breeze with two preset cleaning modes. There is even a sterilize option for canning jars, small cutting boards, and utensils. The removable reservoir means no special plumbing or wet-wall installation is required. And with a common 120V power requirement, you can simply plug it into a regular outlet, and you're ready to go.



Optional, 2-drawer Pedestal slides into a standard dishwasher cutout for hassle-free installation.



The bright, Stage Lighting makes it easy to snap a photo with your phone and share your creations!



Steam Bake Water Bath is for creamy desserts, like cheesecake, without the hassle of handling hot pans of water.



The compact, removable 24 oz. water tank is lightweight, easy to fill, and convenient to access.

SHARP ELECTRONICS CORPORATION
100 Paragon Drive, Montvale NJ, 07645
1.800.237.4277 • www.sharpsusa.com

SHARP®

Be Original.

SHARP

Simply Better Living

Smart Combi Steam Oven

SSC2489GS**1.1
CU. FT.****24"
WIDTH****SPECIFICATIONS****DESIGN**

Finish	Stainless Steel, Black Glass
Control Location	Right Side on Door
Control Type	Full Color Touch Navigation, Wi-Fi Indication and 4 Mechanical Buttons on Door
Trim Kit	No

OVEN INTERIOR

Capacity (cu. ft.)	1.1 cu. ft.
Finish	Non-Stick
Color	Speckled Gray
Interior Light	Incandescent
Stage Lighting	LED Light

FEATURES

Cooking Modes	Manual Mode and Smart Cook
Manual Mode Cooking Methods	
Superheated Steam	Air Fry / Steam Roast and Steam Grill
Dry Heat	Convection Bake
Steam Bake	Steam Bake Breads, Steam Bake and Water Bath
Steam	Steam Cook, Steam Keep Warm and Steam Refresh
Oven Settings	Wi-Fi Connect, Sound, Control Lock, Demo, and Temperature
Cleaning Modes	Sterile, Descale, Oven Cleaning - Steam and New Oven Clean

MANUAL MODES TEMPERATURE GUIDE / MAX COOK TIME

SuperSteam Grill	485°F / 40 Minutes
Air Fry / Steam Roast	212°F - 485°F / 2 Hours
Convection Bake	212°F - 485°F / 2 Hours
Steam Bake	
Breads	350°F - 425°F / 2 Hours
Water Bath	250°F - 300°F / 2 Hours
Steam Cook	
Steam Cook	212°F / 1.5 Hours
Steam Keep Warm	175°F / 1 Hour
Steam Refresh	130°F / 2 Hours
Steam Proof	100°F / 2.5 Hours

ADDITIONAL FEATURES

Door Drip Tray	Yes
Water Reservoir Capacity	24 oz.
Accessories	2 Baking / Steam Trays 1 Broil / Grill Rack

OPTIONAL ACCESSORY

Product Name	Under the Counter Pedestal
Model	SKCD24U0GS
Color	Stainless Steel or Custom Panel Ready
UPC	074000621459

ADDITIONAL SPECIFICATIONS

Power Source (Voltage, Hz)	AC 120V, 60Hz, AC Only
Circuit Breaker	12A
Safety Compliance	UL Certified

DIMENSIONS & WEIGHT (in./lbs.) (w x h x d)

Cavity Dimensions	15.55" x 9.45" x 12.01"
Product Dimensions	23.5" x 19.5" x 17.0" (without handle) 23.5" x 19.5" x 18.9" (with handle)
Shipping Dimensions	32.1" x 26.0" x 26.7"
Product Weight / Shipping Weight	63.0 lbs. / 70.0 lbs.

WARRANTY/UPC

Parts	1 year limited
Labor	1 year limited
UPC	074000621671

*Internal capacity calculated by measuring maximum width, depth and height. Actual capacity for holding food is less.

Product specifications and design are subject to change without notice.

© 2022 Sharp Electronics Corporation. All rights reserved.

Sharp and all related trademarks are trademarks or registered trademarks of Sharp Corporation and/or its affiliated companies. All other trademarks are property of their respective owners.

QUESTIONS?

1.800.BE.SHARP**SIMPLY BETTER LIVING**

At Sharp Home Electronics Company of America, we are committed to Simply Better Living. Our innovative home appliance products are SIMPLE to use, BETTER than the competition, and encourage a HEALTHY LIFESTYLE.

SHARP ELECTRONICS CORPORATION
100 Paragon Drive, Montvale NJ, 07645
1.800.237.4277 • www.sharpsusa.com

**SHARP**

Be Original.