



SHARP
Be Original.

Simply Better Living

Wi-Fi CONNECT GUIDE
SMART COMBI STEAM OVEN
MODEL SSC2489GS



HOW TO CONNECT AND PAIR YOUR APPLIANCE TO THE SHARP KITCHEN APP

Follow the below instructions to utilize the Sharp Combi Steam Oven Spotlight Section and gain access to the Sharp Kitchen Alexa Skills to operate your oven with voice commands.

1. GETTING STARTED

- Download the **Sharp Kitchen App** on the App Store® or Google Play.



- Launch the Sharp Kitchen App and sign in or create a Sharp account.
*If you already have a Sharp account, enter verified credentials and press **(SIGN IN)**.

If you do not have a Sharp account, press **(CREATE ACCOUNT)** and follow the on-screen instructions. A verification email will be sent. Please verify email within 24 hours, otherwise account registration will need to be restarted.

2. BEFORE YOU BEGIN

- Plug in and power on Smart Combi Steam Oven
- Ensure your smart device is connected to a 2.4 GHz Wi-Fi network and **disable Auto-Reconnect / Auto-Join** for any other home networks previously setup on your device.
- Ensure that your chosen Wi-Fi network has a good signal strength in the area where you install your Smart Combi Steam Oven.
- Please have your home network Wi-Fi name (SSID) and password readily available.
- Before you can operate the appliance using Alexa voice commands, the Remote Start feature must be enabled. The Remote Start feature is OFF by default when the appliance is first plugged in and must be turned ON to utilize.

To turn ON Remote Start:

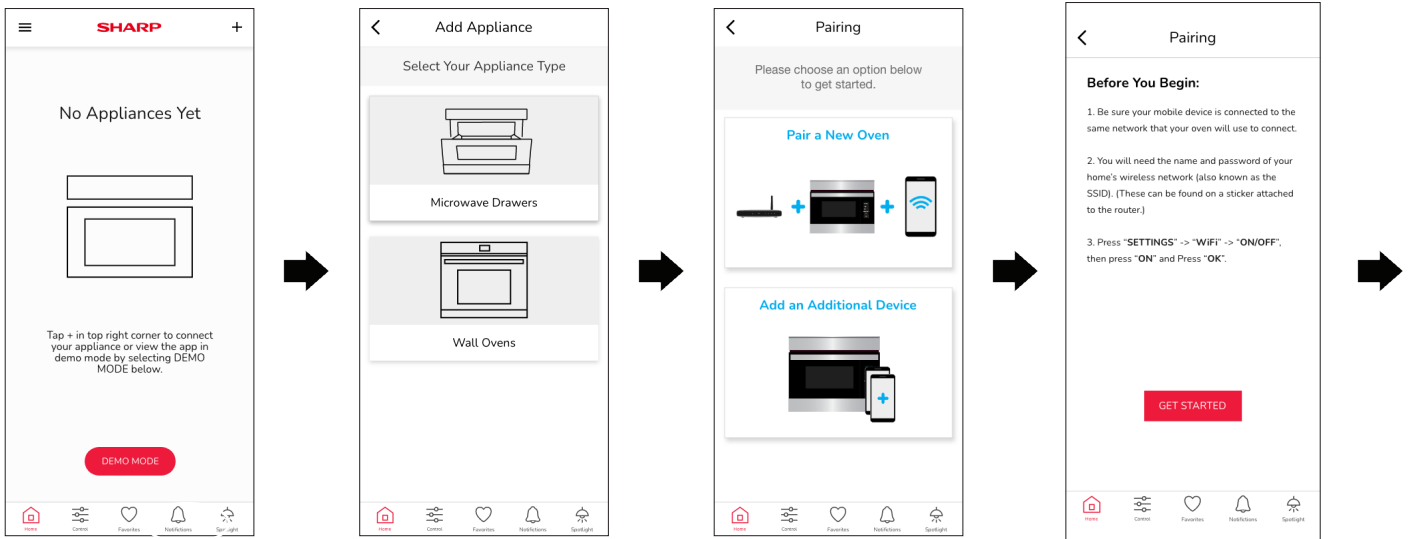
- Touch **Settings**
- Touch **Remote Start**
- Touch **ON**
- Press **CLEAR**

3. PAIRING YOUR APPLIANCE

Launch the **Sharp Kitchen app** and sign in. Follow instructions below to connect your Smart Combi Steam Oven to the Internet, then pair your app to your appliance.

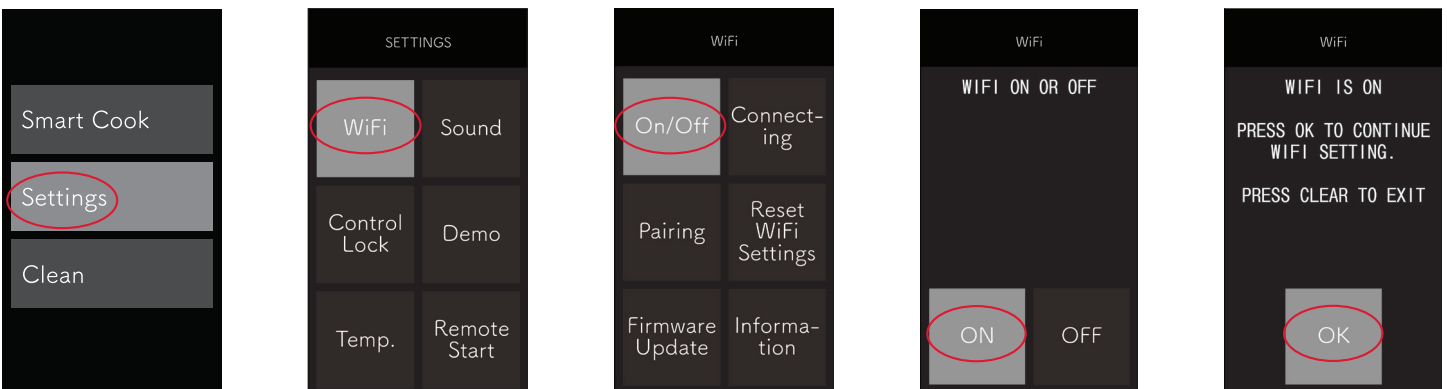
IN THE APP

- Press the **(+)** sign in the top right hand corner to add an appliance and begin the pairing process. Select **(Wall Ovens)**.
- If you are pairing your Smart Combi Steam Oven for the first time select **(Pair a New Oven)** on your mobile device.



ON YOUR OVEN

- On your oven display, press **(SETTINGS)** → **(Wi-Fi)** → **(ON/OFF)**, then press **(ON)** and press **(OK)**. The oven display will show **"CONNECTING. OPERATE WITH SMART DEVICE APP"**.



IN THE APP

- Press **(GET STARTED)** on the app screen

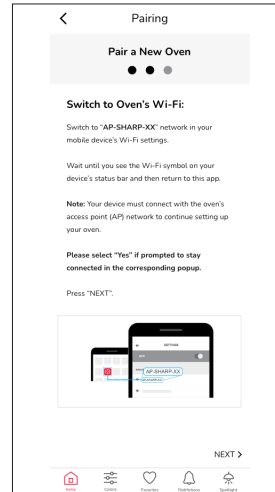
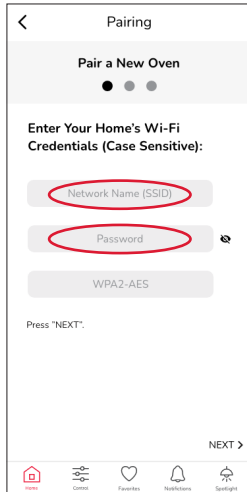


IN THE APP

Please enter your:

- Home Network Name (SSID)
- Home Network Password (SSID Password)

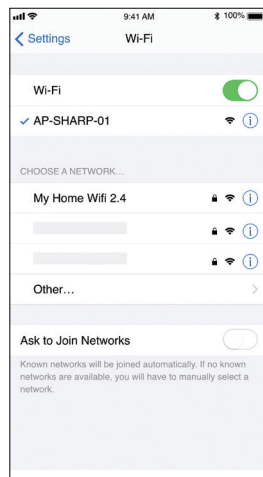
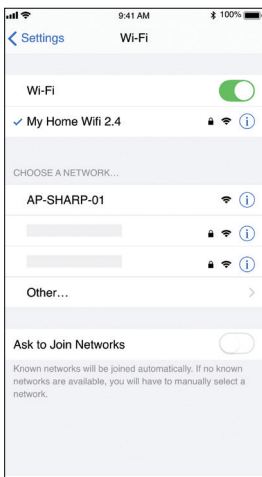
Note: Both fields are case sensitive



DEVICE SETTINGS

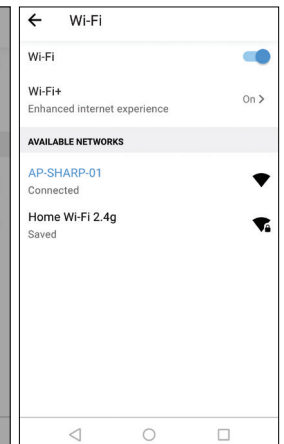
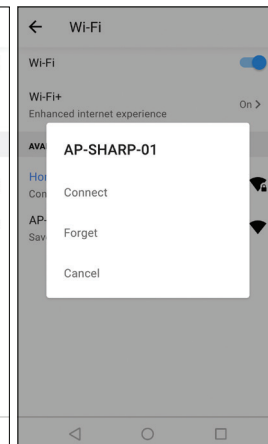
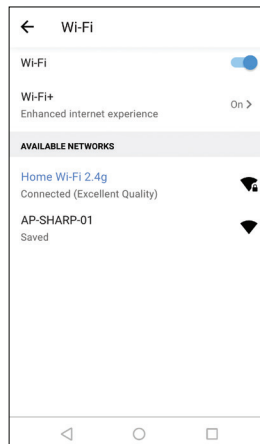
Apple Devices

- Go to the Wi-Fi Settings on your smart device
- Select **AP-SHARP-XX** on your smart device Wi-Fi Settings.



Android™ Devices

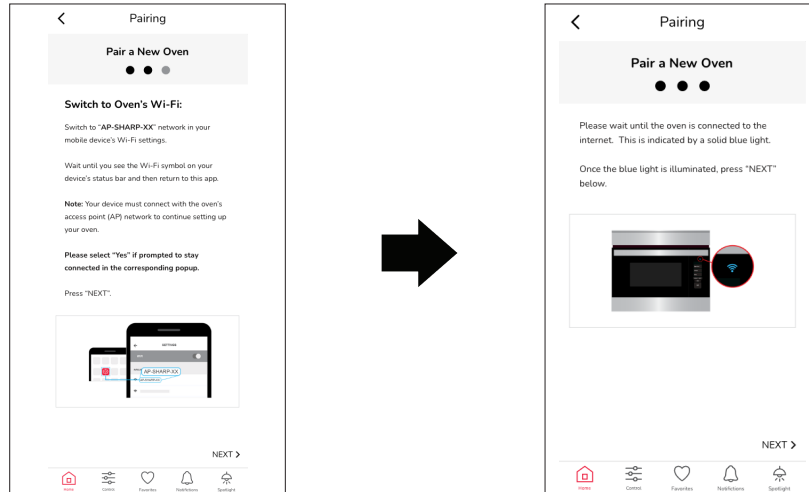
- Go to the Wi-Fi Settings on your smart device
 - Select **AP-SHARP-XX** on your smart device Wi-Fi Settings, then select **(CONNECT)**.
- Note: You may receive a message saying you won't be able to access the Internet.
- Select **(SWITCH)**.



Note: Please wait until the Wi-Fi symbol displays on the smart device's status bar before returning to the app.

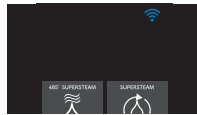
IN THE APP

After the Wi-Fi symbol appears on the status bar, return to the app and press **(NEXT)**.



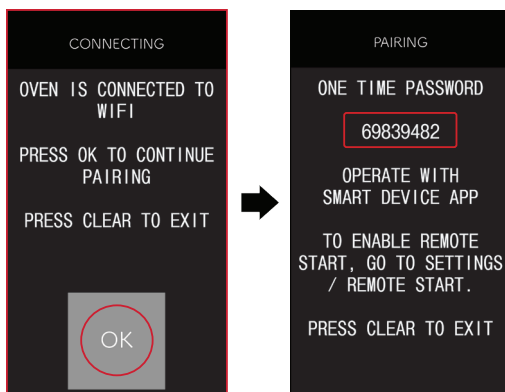
ON YOUR OVEN

After about a minute, the blue Wi-Fi symbol should be lit up on the oven above the display.



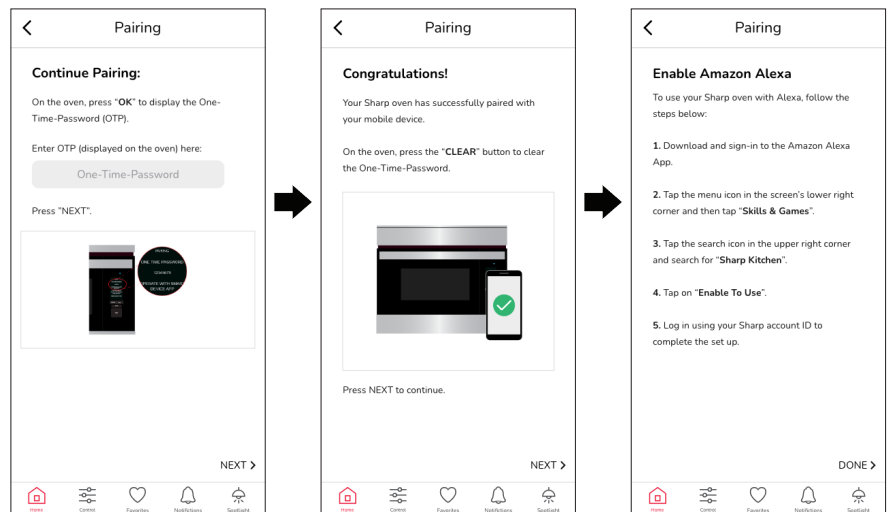
ON YOUR OVEN

Press **(OK)** on the oven to display a **One-Time-Password**.

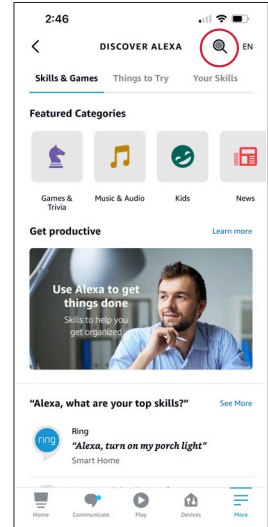
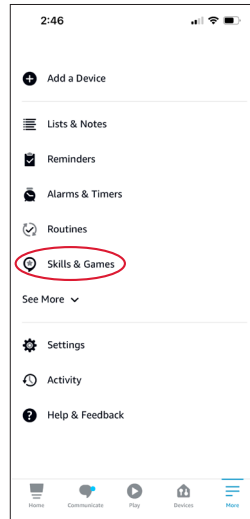
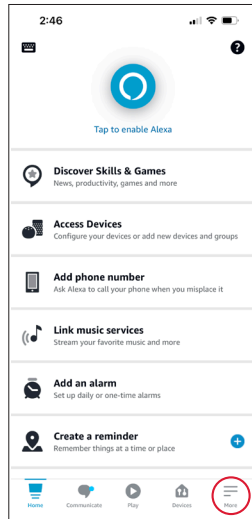
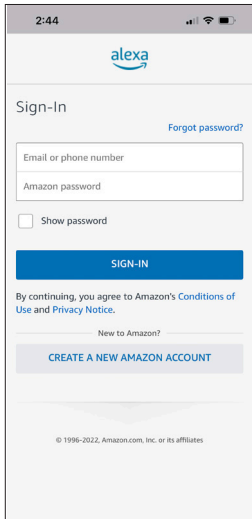


IN THE APP

- Enter the One-Time-Password displayed on the oven and press **(NEXT)**.
- Press **(NEXT)** to complete pairing.



4. ENABLING “SHARP KITCHEN” ALEXA SKILLS

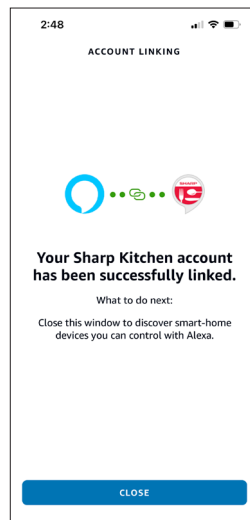
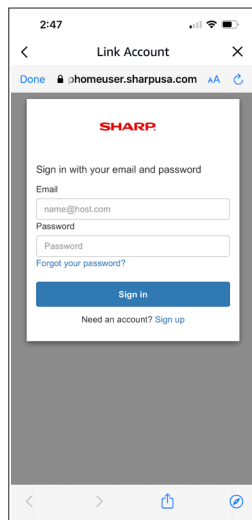
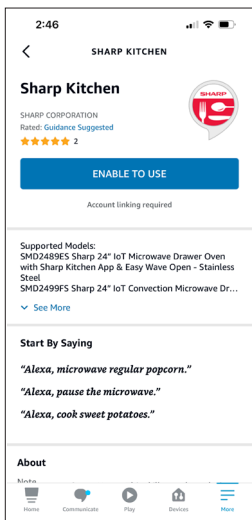


- Download Amazon Alexa app and sign in.

- Tap the **menu icon**.

- Tap **(Skills & Games)**.

- Tap the **search icon** and search Sharp Kitchen.



- Tap **(ENABLE TO USE)**.

- Log in using your Sharp account ID to complete the set up.

SSC2489GS ALEXA COMMAND GUIDE

Mode	Command	Quantity Range	Min - Max Temperature
Grill	Alexa, grill for X minutes in the oven.	X = 1 - 40 minutes	485°F
Roast	Alexa, roast at Y degrees for X minutes in the oven.	X = 1 - 120 minutes	Y = 212°F - 485°F (5°F increments)
Convection Bake	Alexa, convection bake at Y degrees for X minutes in the oven.	X = 1 - 120 minutes	Y = 212°F - 485°F (5°F increments)
Steam	Alexa, steam for X minutes in the oven.	X = 1 - 90 minutes	212°F
Warm	Alexa, warm for X minutes in the oven.	X = 1 - 60 minutes	175°F
Proof	Alexa, proof for X minutes in the oven	X = 1 - 150 minutes	100°F

TROUBLESHOOTING

I cannot connect my device to the oven.	Did you enter your home network's SSID and password correctly? Remember both are case sensitive.
My device cannot locate the oven.	Are your smart device and your oven connected to the same home network? If you have a dual-band router, are both devices on the 2.4 GHz band?
My One-Time-Password is not working.	Please check the numbers provided in the OTP (one-time-password) screen displayed on the oven and enter them in the app again.
Connection Failed displayed on oven display panel.	Is your Wi-Fi signal strength strong? Is your router located far away from the oven?
My app says that I do not have any compatible smart appliances.	Refresh the My Appliances screen after completion of the pairing process. Your Smart Combi Steam Oven should display when properly paired.

STILL NEED ASSISTANCE?



EMAIL

Available 24/7
US: sharpusa.com

See the Contact Us section on our sites



CHAT ONLINE

Mon-Fri: 7am-7pm CST
Sat-Sun: 9am-7pm CST

U.S. | www.sharpusa.com/support



CALL US

US 800-BE-SHARP
800-237-4277

Mon-Fri: 7am-7pm CST
Sat-Sun: 9am-7pm CST

Contact a Sharp Advisor on the phone

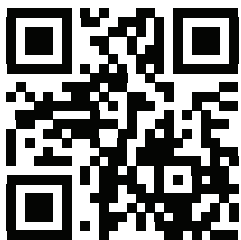
Simply Better Living

At Sharp Home Electronics Company of America, we are committed to Simply Better Living.

Our innovative home appliances are simple to use, better than the competition and encourage a healthy lifestyle. Our Simply Better Living Blog is dedicated to simple, creative solutions for living your best life. Every day we share tips, recipes, life-hacks and articles with our readers along with a weekly newsletter of the latest stories you don't want to miss. It's all about the food you eat and the air you breathe. Welcome home.

<http://sbl.sharppusa.com> or <http://simplybetterliving.sharppusa.com>

Scan the QR code below to sign up to receive the weekly Simply Better Living newsletter.



FOLLOW @SHARPHOMEUSA



SHARP

Be Original.

Simply Better Living

SHARP ELECTRONICS CORPORATION
100 Paragon Drive, Montvale NJ, 07645
1.800.237.4277 • www.sharppusa.com

© 2022 Sharp Electronics Corporation. All rights reserved.

Sharp and all related trademarks are trademarks or registered trademarks of Sharp Corporation and/or its affiliated companies. All other trademarks are property of their respective owners.

Apple and iPhone are trademarks of Apple Inc., registered in the U.S. and other countries.

Android and Google Play are trademarks of Google LLC.