

## 6-Inch Side/Rear Transition for Downdraft



### Product Features

#### Performance

For use with remote or inline blower applications

Use with blowers, ducting, or elbows with 6 inch round duct connection

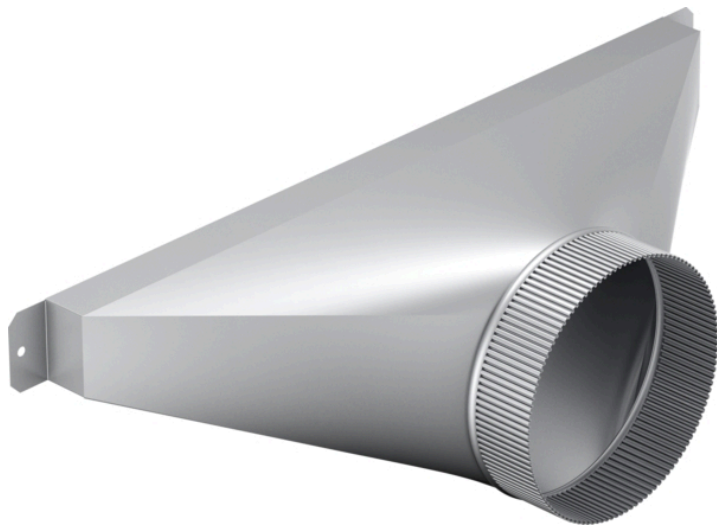
Can attach to downdraft housing or CVDUCT2 rectangular duct accessory

See installation guide for details

#### Design

Rectangular 1-7/8" x 19" transition to 6" round

Designed for use with UCVM30RS, UCVM36RS, UCVP36RS downdrafts

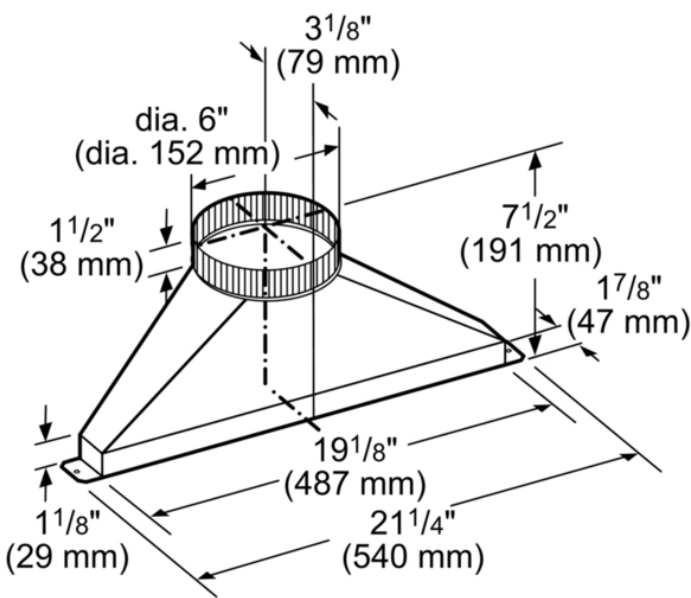


Notes: Please refer to installation instructions. Installation instructions are available at [www.thermador.com](http://www.thermador.com). Specifications are correct at the time of printing. Thermador reserves the right to change product specifications and design at any time, without notice.

1 800 735 4328 | [WWW.THERMADOR.COM](http://WWW.THERMADOR.COM) | 1901 Main Street, Suite 600 Irvine, CA 92614

©2022 BSH HOME APPLIANCES CORPORATION, ALL RIGHTS RESERVED LITHO DATE: 05/2022

6-Inch Side/Rear Transition for Downdraft



measurements in inches (mm)

Product Features

Accessory	
Brand	Thermador
SKU	CVTSIDE6
Internal article number	00000000000777717
EAN code	825225920779
3	
3	
Standard number of units per pallet	20
UPC code	825225920779
Product image	MCSA02476000_i3921_1849304_CVTSIDE6_de

Technical Specification

Notes: Please refer to installation instructions. Installation instructions are available at [www.thermador.com](http://www.thermador.com). Specifications are correct at the time of printing. Thermador reserves the right to change product specifications and design at any time, without notice.

1 800 735 4328 | [WWW.THERMADOR.COM](http://WWW.THERMADOR.COM) | 1901 Main Street, Suite 600 Irvine, CA 92614

©2022 BSH HOME APPLIANCES CORPORATION, ALL RIGHTS RESERVED LITHO DATE: 05/2022