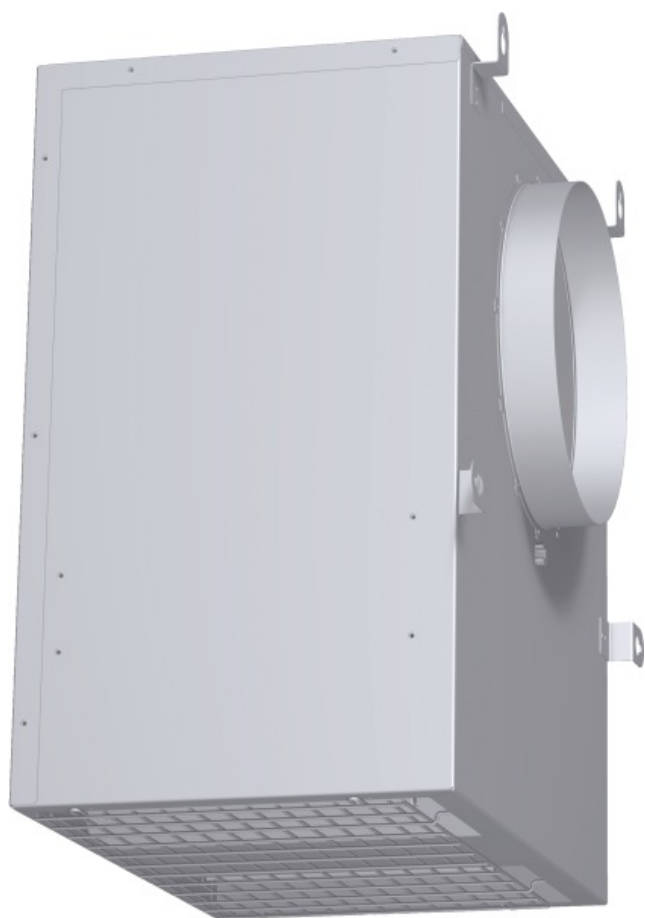


1000 CFM Remote Blower VTR1030D



VTR1030D cast iron grey

- Can be mounted on the exterior of the home to minimize noise in the cooking area
- Can be roof-mounted or mounted on an exterior wall, depending on appearance preferences or to best suit the ducting application
- Must order Roof Plate (RFPLT1000) when using a 1000CFM or 1300CFM remote blower in a roof-mount application
- Cable connected to blower and hood controls with a length of 30 ft.

825225848134

1000 CFM Remote Blower VTR1030D



Product Features

Operating Mode: Ducted

Consumption and connection features

UPC code: 825225848134

Material: Lacquered

Watts (W): 640

Current (A):

Volts (V): 120

Frequency (Hz): 60

Approval certificates: CSA, UL

Power cord length (in): 59 INCH

Power cord length (cm): 150.0

Plug type: 120V-3 prong

Overall appliance dimensions (HxWxD) (in): 20 3/4" / x 19 7/8" x 12 1/8"

Overall appliance dimensions (HxWxD) (mm): 527 MM x 504 x 308

Product packaging dimensions (HxWxD) (in): 17.71 x 23.62 x 26.77

Adjustable feet:

Height of the chimney (in):

Height of the chimney (mm):

Vertical rise height:

Required distance above cooktop/ranges:

Net weight (lbs): 43

Net weight (kg): 19.000

Gross weight (lbs): 47

Gross weight (kg): 21.000

Motor location:

Maximum CFM: 900

Diameter of air duct (in) top: 8

Diameter of air duct (in) back:

Discharge direction: downward

No-return airflow flap: No

2013-07-12