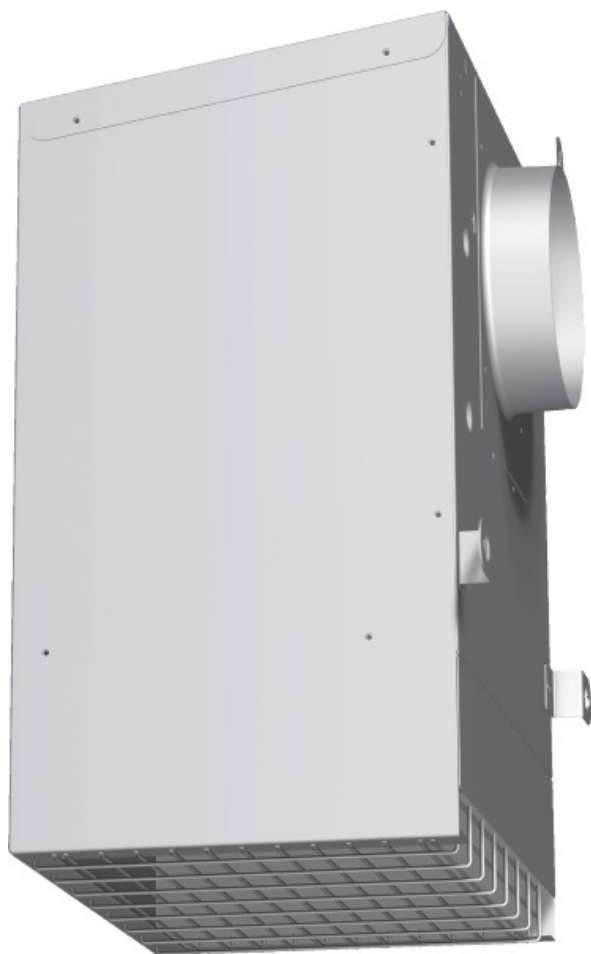


600 CFM Remote Blower VTR630D

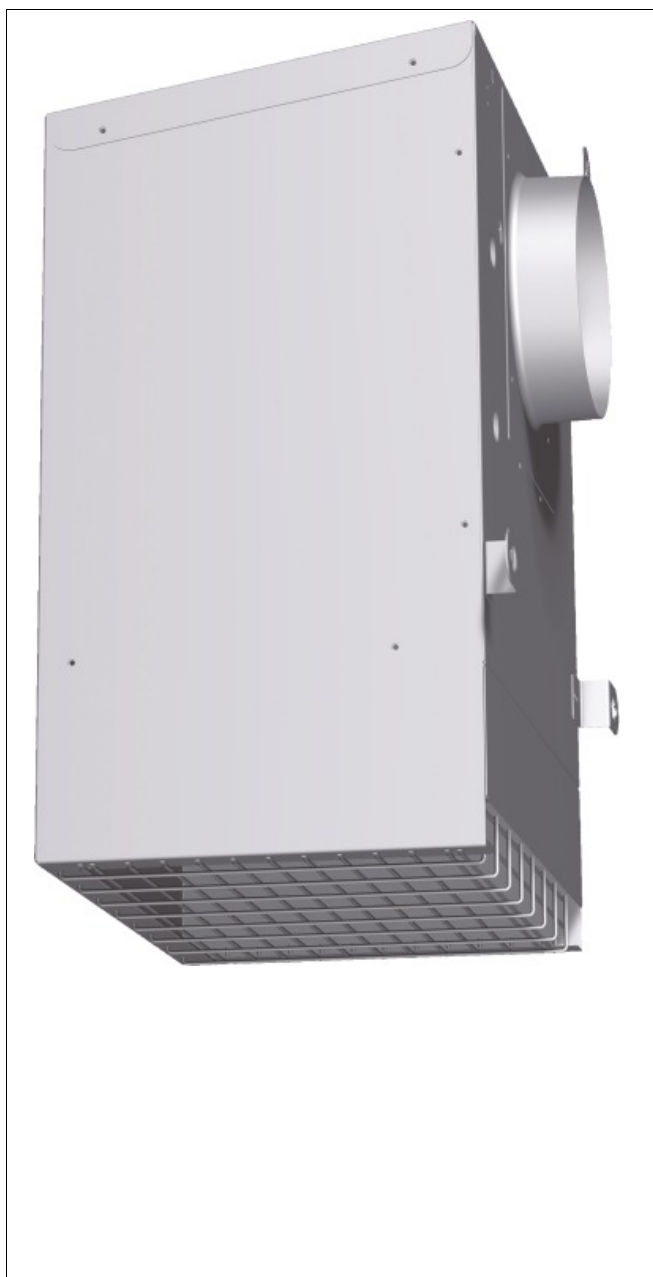


VTR630D White

- Can be mounted on the exterior of the home to minimize noise in the cooking area
- Can be roof-mounted or mounted on an exterior wall, depending on appearance preferences or to best suit the ducting application
- Cable connected to blower and hood controls with a length of 30 ft.

825225848127

600 CFM Remote Blower VTR630D



Product Features

Operating Mode: Ducted

Consumption and connection features

UPC code: 825225848127

Material: Lacquered

Watts (W): 530

Current (A):

Volts (V): 120

Frequency (Hz): 60

Approval certificates: CSA, UL

Power cord length (in):

Power cord length (cm): 150.0

Plug type: 120V-3 prong

Overall appliance dimensions (HxWxD) (in): 19" / x 14 3/8" x 10 7/8"

Overall appliance dimensions (HxWxD) (mm): 483 MM x 365 x 276

Product packaging dimensions (HxWxD) (in): 15.74 x 19.29 x 25.19

Adjustable feet:

Height of the chimney (in):

Height of the chimney (mm):

Vertical rise height:

Required distance above cooktop/ranges:

Net weight (lbs): 24

Net weight (kg): 11.000

Gross weight (lbs): 28

Gross weight (kg): 13.000

Motor location:

Maximum CFM: 560

Diameter of air duct (in) top:

Diameter of air duct (in) back: 6

Discharge direction:

No-return airflow flap: No

2013-07-12