

INTRODUCING NEXT GENERATION EUROPA + DCBL SUPPRESSION SYSTEM™

Since 2001, Zephyr's Europa Collection has been the standard by which the industry measures itself. Combining European design with American performance, Europa is the best of all worlds. A part of the Essentials Collection, the Next Generation Europa symbolizes our unyielding dedication to progress, to innovative design and using technology to deliver better products.

DCBL Suppression System™ increases your range hood's torque at speed one, also known as working speed, to match the most typical cooking styles. By focusing on working speed, it allows us to deliver the needed ventilation for cooks using one or two burners to prepare a meal. On working speed, DCBL Suppression System™ generates 250-CFM at 0.8 sones—enough power to handle a 10,000 BTU and one 15,000 BTU working on maximum capacity. In short, you get the CFM you need but none of the noise you would expect.

Our newly revamped Essentials Collection features the very best in kitchen ventilation. From the new Next Generation Europa to the original filterless Power Series range hoods, Zephyr covers your needs.

➤ *New models are indicated with this symbol.*

BENEFITS

DCBL SUPPRESSION SYSTEM™

Exceeds Energy Star™ requirements:

- Energy Star™ - 2.8 CFM / watt
- Zephyr - 17 CFM / watt

Up to 80% more energy efficient

Up to 77% quieter on working speeds

Higher torque to increase performance efficiency

Less wear-and-tear on motor

3-year warranty

BLOOM™ HD LED

3-watt LED uses 15% of the energy a 20-watt halogen uses

Halogen-like warm light color rated at 3200 Kelvin

Cool to the touch. Never gets hot

Patented lens evenly distributes light 25,000-hour life expectancy

3-year warranty

Industry's first dimmable LED light bulb

To learn more about DCBL Suppression System™ visit www.ZephyrOnline.com

POWER & BREEZE SERIES Robust power and superior value make the Power and Breeze Series best-in-class range hoods. With advanced components and backed by our industry leading warranty, Power and Breeze range hoods always live up to their name.



TYPHOON A smooth, sophisticated wing in black, white, bisque or stainless steel houses a powerful yet virtually noise-free 850-CFM blower.

SIZE: 30", 36", 42", 48" | CFM: 850



HURRICANE Electronic touch-controls take charge of the self-cleaning three-speed 695-CFM blowers and dual-level halogen all work together to make your life just a little bit easier.

SIZE: 30", 36" | CFM: 695



CYCLONE Modern, clean lines provide a perfect complement to any interior, while centrifugal blowers liquefy cooking residue without complex filters to make cleaning a snap.

SIZE: 30", 36", 42" | CFM: 650



BREEZE I Breeze I is an exceptional value. Its 250-CFM blower quietly remove odors, and the standard dual-level halogen bulbs brightly illuminate the cooktop below.

SIZE: 24", 30", 36" | CFM: 250



BREEZE II Superior performance in a quiet, low-profile package, Breeze II comes equipped with a quiet, three-speed 400-CFM blower and standard 2-level halogen bulbs.

SIZE: 30", 36" | CFM: 400

+	+	+	+	+	+
+	+	+	+	+	+
+	+	+	+	+	+
+	+	+	+	+	+
+	+	+	+	+	+

PRO-STYLE & POWER PACKS When powerful ventilation is what you need, look no further than Zephyr's pro-style and power pack options. Built for professional-grade performance these hoods are also feature-rich and offer multiple installation options.



TEMPEST I Expect a lifetime of power and performance, plus sleek electronic controls that streamline and enhance the hood's professional aesthetic.

SIZE: 30", 36", 42" | CFM: 600, 1100



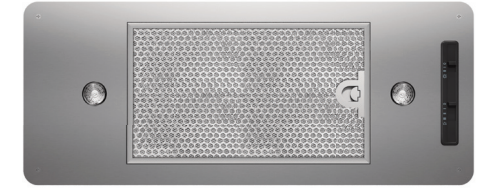
TEMPEST II The 18" tall version our pro-style range hoods, Tempest II is designed with professional-grade performance and seamless contours.

SIZE: 30", 36", 48" | CFM: 290, 600, 1100



TWISTER Sometimes you just need to cover your bases, so we designed this inexpensive power pack as a simple, no-hassle solution.

SIZE: 27" | CFM: 290



TORNADO I Designed with great attention to detail and added flexibility in a small, attractive package hidden under your custom range hood canopy.

SIZE: 27" | CFM: 600



TORNADO II An insert with a wireless remote control, an easy-to-install, adjustable-depth liner and baffle filters to enhance the look of your kitchen.

SIZE: 29" | CFM: 1000



TORNADO III Muscle and flexibility separates Tornado III from the typical power pack. A standard remote control and up to 5 motor speeds add to your enjoyment.

SIZE: 38" | CFM: 290, 600, 1000



CYPRESS The seamlessly contoured, corrosion-resistant 316-grade stainless steel canopy houses high-performance stainless steel baffle filters.

SIZE: 36", 42", 48" | CFM: 600, 1000, 1100



WILLOW Built for the outdoors, the 316-grade stainless option and marine-grade rocker controls are made to withstand the toughest environments.

SIZE: 29" | CFM: 1000

ZEPHYR

ZEPHYR CORPORATION
2277 Harbor Bay Parkway
Alameda, California 94502

1.888.880.VENT
ZEPHYRONLINE.COM

Essentials is more than just the basics. It's the building blocks of a great kitchen.

Turn to the Essentials Collection for premier design and performance options in any range hood category. From filterless under-cabinet hoods to outdoor options to the Next Generation Europa, Essentials is the perfect place to start when planning your kitchen project. Embrace your love of cooking and increase your enjoyment when preparing meals at home by choosing a range hood that fits your style and budget.

ZEPHYR



NEXT GENERATION EUROPA Featuring the sophistication of European design and Zephyr's DCBL Suppression System™ – the new benchmark in range hood performance.



VERONA WALL An LED strip surrounds this unique straight-glass canopy range hood and rotates between blue, white and amber while on Demo mode.
SIZE: 30", 36" | CFM: 715



MODENA WALL A study in clean modern simplicity, Modena comes pre-loaded with DCBL Suppression™ technology so its performance will be as stunning as its looks.
SIZE: 30", 36" | CFM: 715



MILANO (G) WALL Curved-glass canopy design, LCD controls, dimmable LED bulbs and DCBL technology deliver high style without compromise.
SIZE: 36" | CFM: 715



MILANO (S) WALL Upgraded with Zephyr's DCBL Suppression System™, Milano takes range hood performance to higher grounds with Bloom LED light bulbs and LCD controls.
SIZE: 36" | CFM: 715



VENEZIA WALL A timeless design, Venezia's formidable design now houses Zephyr's DCBL Suppression System™ and elevates this ageless range hood to unparalleled levels of performance.
SIZE: 30", 36", 42" | CFM: 715

DCBL^e SUPPRESSION SYSTEM™

All Next Generation Europa range hoods are equipped with DCBL Suppression technology, including Bloom™ HD LED light bulbs.

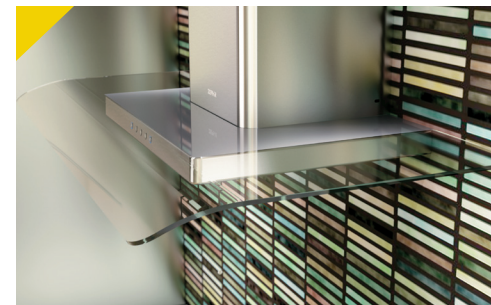
To learn more, visit us at:
www.ZephyrOnline.com/DCBL

BLOOM™ HD LED LIGHT BULBS

Bloom HD LEDs™ have a 68-year lifetime when used for one hour a day. Every day. They are the first and only LED bulbs on the market that are dimmable and the one-inch heat sink dissipates heat away from the LED ensuring high fidelity performance over time.



EUROPA CLASSICS Classic never goes out of style. The Europa Classics offer industry leading performance and features that also provide the best value.



ANGOLO WALL An elegant and playful range hood, Angolo comes equipped with Electronic LED controls and a 600-CFM motor.
SIZE: 30", 36" | CFM: 290, 600



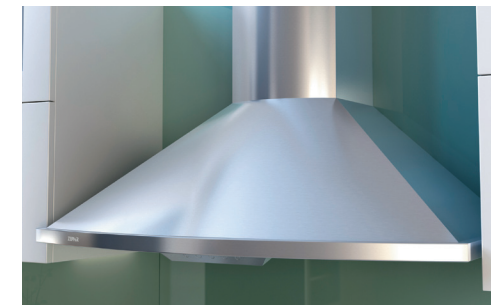
FIRENZE WALL A Europa Classic, Firenze's hybrid features provide the focused performance of a 600-CFM motor with the upgraded lighting of Bloom HD LED light bulbs.
SIZE: 36" | CFM: 600, 715



ANZIO WALL At home in either traditional or contemporary kitchens, Anzio is a low-profile chimney-style range hood that will add style and value to any kitchen.
SIZE: 30", 36" | CFM: 290, 600



ROMA WALL A bold, angular presence at a surprisingly affordable cost. Ideal for the design-savvy chef or builder on a budget.
SIZE: 30", 36" | CFM: 290, 600



SAVONA WALL Our most affordable full-featured hood comes in stainless steel or black with three speed levels and two halogen lamps.
SIZE: 30", 36" | CFM: 290, 685



TORINO ISLAND The sculpted glass canopy is yours in green, blue, red or yellow. An infrared remote adjusts power and light from a distance.
SIZE: 36" | CFM: 715



ANZIO ISLAND Anzio's 600-CFM motor, electronic LED controls, dual-level halogens and Quick-Lock installation system put it a step ahead of the competition.
SIZE: 36", 42" | CFM: 290, 600



ROMA ISLAND A surprisingly beautiful and affordable island design. Roma is ideal for the design-savvy chef, or builder that won't settle for mediocrity.
SIZE: 36", 42" | CFM: 600

EUROPA CLASSICS UNDER-CABINETS Never under-featured, our collection of under-cabinet range hoods provide the looks and performance of their chimney-gifted counterparts.



GENOVA Genova's crescent-like body delivers stunning design and quality performance. Its retractable visor controls the hood's motor and lights. Available with optional remote control.
SIZE: 30", 36" | CFM: 290, 500



TERAZZO Bearing the gift of style, Terazzo's true 12-inch cabinet depth and the ingenious terraced display rack make it a perfect addition to any kitchen.
SIZE: 30", 36" | CFM: 290, 400



GUST Subtle as its homeowner, Gust's perfectly curved corners and the top-mounted return-air louver, are evidence that we spare nothing when it comes to quality.
SIZE: 30", 36" | CFM: 290, 400



PYRAMID Energize your kitchen in stainless steel, white or black. An adjustable utensil bar keeps utensils within easy reach.
SIZE: 30", 36" | CFM: 290, 400

(UN)COMMON FEATURES

Essentials Collection by Zephyr is about getting the very best for your money. We design all our products to over-deliver in style and performance so when it comes to kitchen ventilation think Zephyr first.

QUALITY FIT AND FINISH: A difference you can feel. We select the best designers and factories to deliver a superior product.

PERFORMANCE VERSATILITY: Essentials can meet the power you need with CFM options from 290 to 600 to 715 to 1100 CFM

QUIET PERFORMANCE: Great ventilation doesn't have to be noisy. Our range hoods give you the power you need at the noise levels that let you enjoy cooking.

TELESCOPIC DUCTING: Standard duct covers that fit up to a 10' ceiling out of the box. Optional duct covers that can go as high as 12'.

QUICK-LOCK INSTALLATION: The easiest island range hood installation. Allows you to install an island range hood in as little as 20 minutes.

OPTIONAL RECIRCULATION KITS: All Europa range hoods can be retrofit with an optional recirculation kit to fit in a ventless installation.

ZEPHYR WARRANTY: We back up our product with warranties of up to 10 years on select models and three years on all Europa chimney and under-cabinet models.



TAMBURO An elegant curve encircles twin halogens and the three-speed motor. An adjustable utensil bar puts your cooking tools where you need them.
SIZE: 30", 36" | CFM: 290, 400



SORRENTO DOWNDRAFT Ideal for small kitchens or for island settings where ceilings are too high for ducting, Sorrento rises to the occasion as a downdraft hood option.
SIZE: 30", 36" | CFM: 500