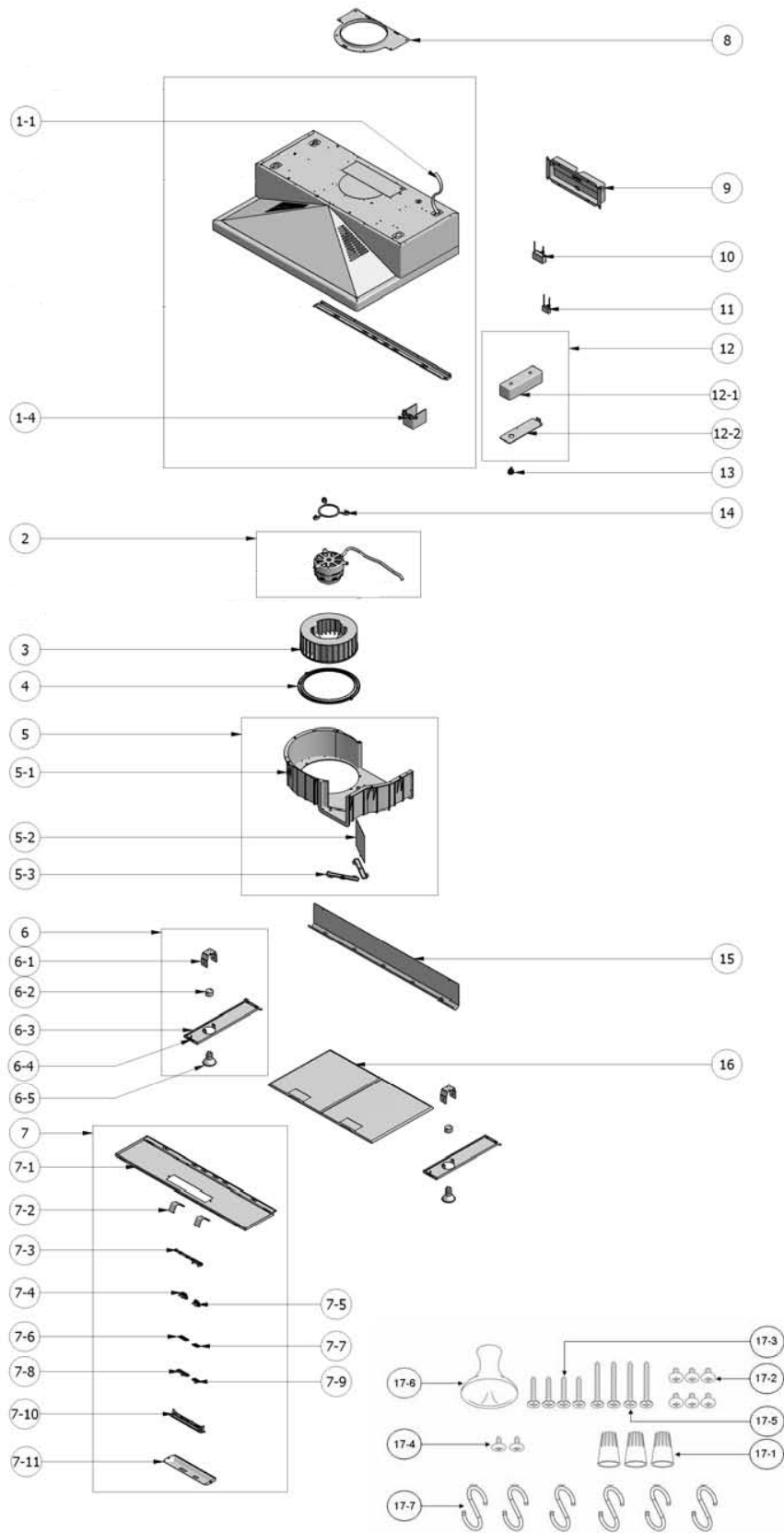


# ZPY-ExxAx



## ZPY-E30Ax, ZPY-E36Ax

Ref. #	Part #	Description	Qty.
1-1	11030015	Electrical Wires	1
1-4	54200011	Electrical Box	1
2	12120062	Motor, 290 CFM	1
2	12120061	Motor ( > SN11 )	1
2	12120057	Motor ( < = SN11 )	1
3	54250011	Blower Wheel, 290 CFM	1
3	54250022	Blower Wheel ( > SN11 )	1
3	54250021	Blower Wheel ( < = SN11 )	1
4	56210040	Cover, Blower Wheel	1
5	50500030	Assembly, Blower Housing	1
5-1	56100019	Blower Housing	1
5-2	56090013	Plate, Air Diverter	1
5-3	56210041	Cover, Air Diverter	2
6	50500031	Assembly, Light Panel (ZPY-E30AB)	2
6	50500032	Assembly, Light Panel (ZPY-E30AS)	2
6	50500033	Assembly, Light Panel (ZPY-E30AW)	2
6	50500034	Assembly, Light Panel (ZPY-E36AB)	2
6	50500035	Assembly, Light Panel (ZPY-E36AS)	2
6	50500036	Assembly, Light Panel (ZPY-E36AW)	2
6-1	54140050	Bracket, Light Socket	2
6-2	12100027	Light Socket	2
6-3	50110064	Panel, Light (ZPY-E30AB)	2
6-3	50110065	Panel, Light (ZPY-E30AS)	2
6-3	50110066	Panel, Light (ZPY-E30AW)	2
6-3	50110067	Panel, Light (ZPY-E36AB)	2
6-3	50110068	Panel, Light (ZPY-E36AS)	2
6-3	50110069	Panel, Light (ZPY-E36AW)	2
6-4	54160009	Spring Clip	2
6-5	ZOB-0020	Bulb, Halogen GU-10, 50W	2
7	50500037	Assembly, Bottom Panel (ZPY-E30AB)	1
7	50500038	Assembly, Bottom Panel (ZPY-E30AS)	1
7	50500039	Assembly, Bottom Panel (ZPY-E30AW)	1
7	50500040	Assembly, Bottom Panel (ZPY-E36AB)	1
7	50500041	Assembly, Bottom Panel (ZPY-E36AS)	1
7	50500042	Assembly, Bottom Panel (ZPY-E36AW)	1
7-1	50100013	Panel, Switch (ZPY-E30AB)	1
7-1	50100014	Panel, Switch (ZPY-E30AS)	1
7-1	50100015	Panel, Switch (ZPY-E30AW)	1
7-1	50100016	Panel, Switch (ZPY-E36AB)	1
7-1	50100017	Panel, Switch (ZPY-E36AS)	1
7-1	50100018	Panel, Switch (ZPY-E36AW)	1
7-2	54150011	Switch Holder Bracket	2
7-3	56240003	Gasket, Switch (ZPY-E30AB)	1
7-3	56220024	Gasket, Switch (ZPY-E30AS)	1
7-3	56220024	Gasket, Switch (ZPY-E36AS)	1

7-3	56240007	Gasket, Switch (ZPY-ExxAW)	1
7-4	11040009	Switch, Motor	1
7-5	11040010	Switch, Light	1
7-6	56220017	Gasket, Motor Switch (ZPY-ExxAB)	1
7-6	56220025	Gasket, Motor Switch (ZPY-ExxAS)	1
7-6	56220019	Gasket, Motor Switch (ZPY-ExxAW)	1
7-7	56220015	Gasket, Light Switch (ZPY-ExxAB)	1
7-7	56220026	Gasket, Light Switch (ZPY-ExxAS)	1
7-7	56220014	Gasket, Light Switch (ZPY-ExxAW)	1
7-8	52170021	Cover, Motor Switch (ZPY-ExxAB)	1
7-8	56210036	Cover, Motor Switch (ZPY-ExxAS)	1
7-8	52170003	Cover, Motor Switch (ZPY-ExxAW)	1
7-9	52170023	Cover, Light Switch (ZPY-ExxAB)	1
7-9	56210037	Cover, Light Switch (ZPY-ExxAS)	1
7-9	52170004	Cover, Light Switch (ZPY-ExxAW)	1
7-10	54140061	Bracket, Switch (ZPY-ExxAB)	1
7-10	54140059	Bracket, Switch (ZPY-ExxAS)	1
7-10	54140062	Bracket, Switch (ZPY-ExxAW)	1
7-11	56210046	Cover Plate, Switch (ZPY-ExxAB)	1
7-11	56210038	Cover Plate, Switch (ZPY-ExxAS)	1
7-11	56210047	Cover Plate, Switch (ZPY-ExxAW)	1
8	54050065	Collar, 7" Round	1
9	54050066	Collar, Rectangular w/Damper	1
10	12050025	Capacitor, 290 CFM	1
10	12050024	Capacitor ( > SN11 )	1
10	12050022	Capacitor 12uF ( < = SN11 )	1
11	12050023	Capacitor 2uF ( < = SN11 )	1
12	50500026	Assembly, Electrical Box	1
12-1	56200061	Box, Electrical	1
12-2	56210039	Cover, Electrical Box	1
13	11040014	Master Switch	1
14	54140060	Bracket, Motor	1
15	50320029	Utensil Bar (ZPY-E30AB)	1
15	50320027	Utensil Bar (ZPY-E30AS)	1
15	50320030	Utensil Bar (ZPY-E30AW)	1
15	50320031	Utensil Bar (ZPY-E36AB)	1
15	50320028	Utensil Bar (ZPY-E36AS)	1
15	50320032	Utensil Bar (ZPY-E36AW)	1
16	50200030	Filter, Aluminum Mesh	2
16-1	01650001	Screw, Charcoal Filter Bracket	8
17	05000057	Hardware Packet	1
17-1	15000002	Wire Cap	3
17-2	01070006	Screw, M4 x 8mm	6
17-3	01070016	Screw, M4 x 3/4"	4
17-4	01070002	Screw, M4 x 8mm Flat Head	2
17-5	01070015	Screw, M4 x 1 1/4"	4
17-6	15000004	Suction Cup	1
17-7	50180003	Hook, S (30" x 5)	6